

Simplicity H0202A1

Simplicity Sewing Pattern H0202 / 8722 Instruction Manual

Misses', Men's, and Teens' Costumes

[Introduction](#) [Pattern Details](#) [Preparation](#) [Assembly](#) [Care & Maintenance](#) [Troubleshooting](#) [Specifications](#) [Support](#)

1. INTRODUCTION

This manual provides detailed instructions for utilizing Simplicity Sewing Pattern H0202 / 8722. This pattern is designed for creating various costume jumpsuits suitable for Misses', Men's, and Teens' sizes. Following these guidelines will assist you in successfully completing your sewing project, from pattern selection to final garment assembly.

2. PATTERN DETAILS

The Simplicity H0202 / 8722 pattern package includes all necessary pattern pieces and instructions for three distinct jumpsuit views (A, B, and C). This pattern is available in size A, which covers XS-S-M-L-XL.

2.1 Recommended Fabrics

This pattern is suitable for a variety of woven fabrics. Recommended options include: Misses', Men's, Denim, Linen, and Twill. For View A's sleeve band, a stretchable ribbed knit fabric is recommended. Always refer to the 'Pick-A-Knit® Rule' if using knit fabrics. Note that extra fabric may be required to match plaids, stripes, or one-way design fabrics.

2.2 Notions Required

- ¾" wide hook and loop tape (1 yard)
- Simplicity® Glow in the Dark Iron On Transfer (one 8" x 10" sheet) OR 1" x 4" each of fabric and paper-backed fusing web remnants for patch.
- For View B: One package of ¾" wide single fold bias tape.
- For View C: Two 9" metal zippers.
- Simplicity Trims (optional, refer to pattern envelope).

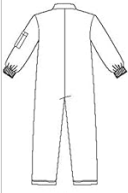
2.3 Sizing and Measurements

Refer to the tables below for body measurements and fabric requirements to ensure you select the correct pattern

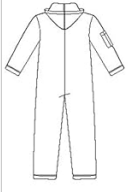
size and purchase adequate material.

8722

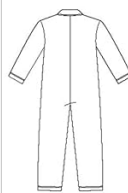
15 PIECES



A



B



C

MISSES', MEN'S AND TEENS' COSTUME

Fabrics: Canvas, Chino, Denim, Linen Types, Twill. **A Sleeve Band** in stretchable ribbed knit fabric. See Pick-A-Knit® Rule. Extra fabric needed to match plaids, stripes or one-way design fabrics.

Notions: ¼ yd. of ¾" wide hook and loop tape, one 8" x 10" sheet of Simplicity® Glow in the Dark Iron On Transfer OR, 1" x 4" each of fabric and paper backed fusing web remnants for patch. **B:** One pkg. of ½" wide single fold bias tape. **C:** Two 9" metal zippers. Look for Simplicity Trims.

BODY MEASUREMENTS

Chest/Bust	30-32	34-36	38-40	42-44	46-48	In
Hip	31½-32½	35-37	39-41	43-45	47-49	"

SizesXS S M L XL

A Jumpsuit

45"	4¼	4¼	4¼	4¼	5	Yd
60"	3¾	3¾	3¾	3¾	3¾	"

Sleeve Band- Stretchable Ribbed Knit Fabric- ¾ yd. of 20" tubular or 40" flat Rib Knit Banding.

A,B Interfacing- ¾ yd. of 20" to 25" lightweight fusible, such as Pellon®

B Jumpsuit

45"	4	4¼	5¼	5¼	5¼	Yd
60"	3¾	3¾	3¾	3¾	3¾	"

C Jumpsuit

45"	4¼	4¼	5	5	5¼	Yd
60"	3¾	3¾	3¾	3¾	3¾	"

Interfacing- ¾ yd. of 20" to 25" lightweight fusible, such as Pellon®

FINISHED GARMENT MEASUREMENTS (Bust/Chest and Hip Printed on Pattern Tissue)

A,B,C Chest/Bust

40½	43	47	51	55	In
-----	----	----	----	----	----

Finished back length from base of neck

A,B,C

59	59½	60	60½	61	In
----	-----	----	-----	----	----

A,B,C Leg Width

15½	16½	17½	18½	19½	"
-----	-----	-----	-----	-----	---

COSTUME POUR JEUNE FEMME, HOMME ET ADOLESCENTS

Tissus: Grosse Toile, Chino, Denim, Toile de Lin, Twill. **A Bande de Manche** en jersey à côtes extensible seulement. Voyez la Règle pour Choisir un Jersey®. Prévoyez davantage de tissu pour raccorder les écosseis, les rayures ou les motifs unidirectionnels.

Mercerie: Fil. 0.80m de fermeture agrippante de 1.5cm de large, une feuille de Décalque Adhésif Fluorescent de 20.5cm x 25.5cm de Simplicity® OU un morceau de tissu ou de matière thermocollante avec support de papier de 2.5cm x 10cm pour la pièce. **B:** Un paquet de ruban de biais simple de 1.3cm de large. **C:** Deux glissières métalliques de 23cm. Demandez les garnitures de Simplicity.

MESURES NORMALISÉES

Poitrine	76-81	87-92	97-102	107-112	117-122	cm
Hanches	79-83	89-94	99-104	109-114	119-124	"

TaillesTP P M G TG

A Combinaison

115cm	3.80	3.90	4.40	4.40	4.60	m
150cm	3.30	3.30	3.40	3.40	3.50	"

Bande de Manche - En jersey Extensible seulement 0.30m de Bande de Jersey à Côtes tubulaire de 51cm ou plate de 102cm

A,B Entoilage- 0.70m de 51cm à 64cm, léger, thermocollant tel que Pellon®

B Combinaison

115cm	3.70	4.40	4.60	4.80	4.90	m
115cm	3.30	3.40	3.40	3.50	3.50	"

C Combinaison

115cm	3.90	4.00	4.50	4.60	4.70	m
150cm	3.30	3.40	3.40	3.50	3.50	"

Entoilage- 0.70m de 51cm à 64cm, léger, thermocollant tel que Pellon®

MESURES DES VÊTEMENTS FINIS

A,B,C Poitrine

103	110	120	130	140	cm
-----	-----	-----	-----	-----	----

Longueur finie du dos depuis la base du cou

A,B,C

150	151	153	154	155	cm
-----	-----	-----	-----	-----	----

A,B,C Largeur de Jambe

39.5	42	44.5	47	49.5	"
------	----	------	----	------	---

*without nap **with nap ***with or without nap

*sans sens **avec sens ***avec ou sans sens

Image: Back of pattern envelope with detailed fabric, notions, and sizing information.

Body Measurements (Inches)

Measurement	XS	S	M	L	XL
Chest/Bust	30-32	34-36	38-40	42-44	46-48
Hip	31½-32½	35-37	39-41	43-45	47-49

Fabric Requirements (Yards) - 45" / 60" wide fabric

View	XS	S	M	L	XL
A Jumpsuit (45")	4¼	4¼	4¾	5	5
A Jumpsuit (60")	3¾	3¾	3¾	3¾	3¾
B Jumpsuit (45")	4	4¼	5	5½	5¾
B Jumpsuit (60")	3¼	3¼	3½	3¾	3¾
C Jumpsuit (45")	4	4¼	5	5½	5¾
C Jumpsuit (60")	3¼	3¼	3½	3¾	3¾

Finished Garment Measurements (Inches)

Measurement	XS	S	M	L	XL
-------------	----	---	---	---	----

Measurement	XS	S	M	L	XL
A,B,C Chest/Bust	40½	43	47	51	55
Finished Back Length from Base of Neck	59	59½	60	60½	61
A,B,C Leg Width	15¾	16¾	17¾	18¾	19¾

3. PREPARATION

3.1 Fabric Preparation

Before cutting, pre-wash and dry your fabric according to its fiber content. This helps prevent shrinkage after the garment is sewn. Press the fabric to remove any wrinkles, ensuring accurate cutting.

3.2 Pattern Piece Identification

Carefully unfold the pattern sheets. Identify all pattern pieces required for your chosen view (A, B, or C). Each piece is numbered and labeled. Handle pattern pieces gently to avoid tearing.

8722 FRONT AND BACK VIEWS

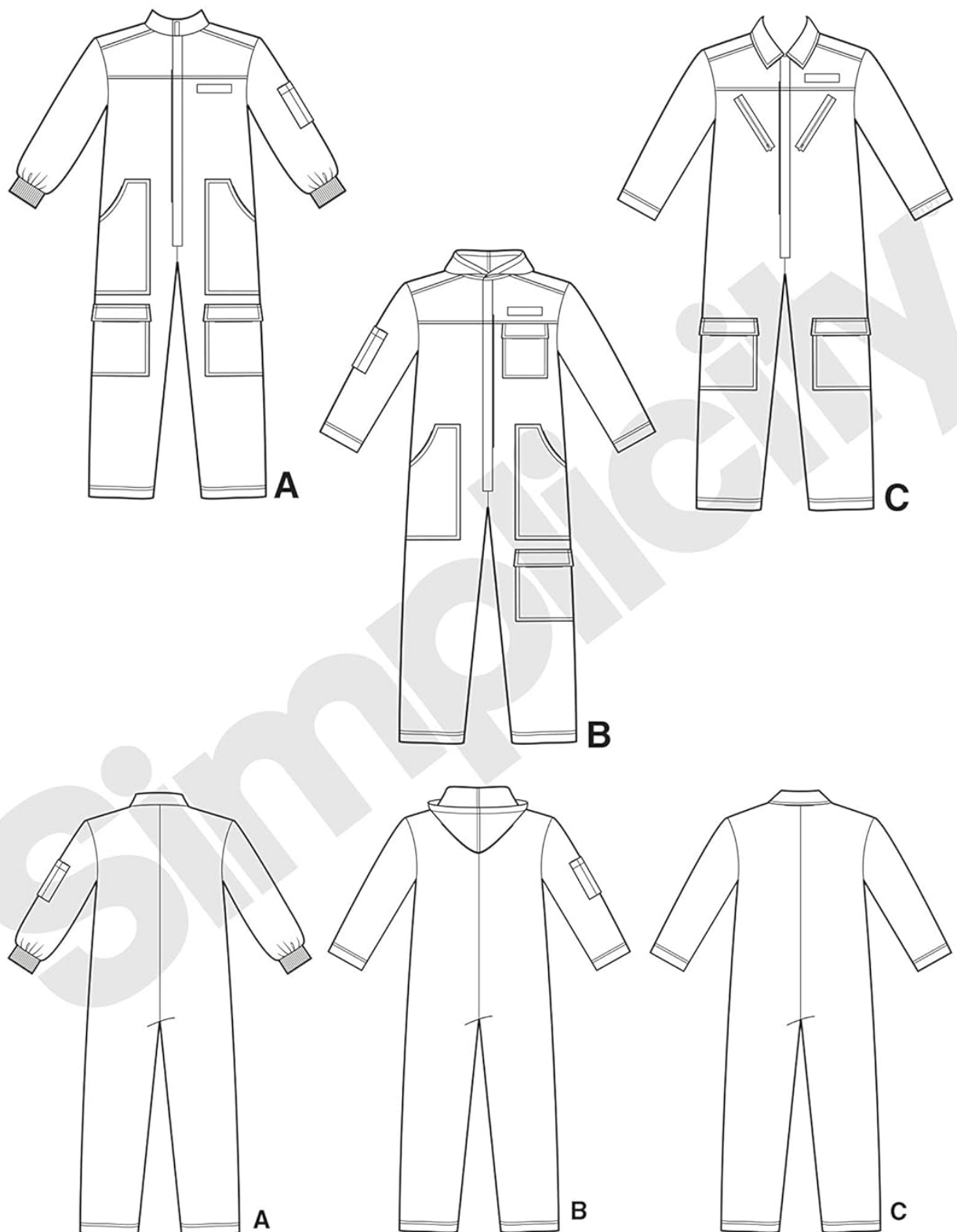


Image: Line drawings illustrating the different views of the jumpsuit pattern.

3.3 Cutting Instructions

Lay your fabric flat on a large surface. Refer to the cutting layout diagrams provided within the pattern instructions for your specific size and fabric width. Pin pattern pieces securely to the fabric, aligning with the grainline arrows. Cut carefully around each pattern piece using sharp fabric shears.

3.4 Marking Fabric

Transfer all pattern markings (notches, dots, squares, darts, fold lines) from the pattern pieces to your fabric using tailor's chalk, a fabric marker, or tailor's tacks. These markings are crucial for accurate assembly.

4. ASSEMBLY

This section outlines the general steps for assembling your costume jumpsuit. Always refer to the detailed step-by-step instructions included with your physical pattern for specific guidance on each view.

4.1 General Sewing Guidelines

- Use a standard $\frac{5}{8}$ " (1.5 cm) seam allowance unless otherwise specified.
- Press seams open or to one side as instructed after each sewing step for a professional finish.
- Finish raw edges with a zigzag stitch or serger to prevent fraying.
- Use appropriate needle and thread for your chosen fabric type.

4.2 Step-by-Step Assembly (Overview)

1. **Prepare Pattern Pieces:** Apply interfacing where indicated (e.g., facings, collars, cuffs).
2. **Construct Bodice:** Sew shoulder seams, attach collar/hood, and insert sleeves.
3. **Construct Pants:** Sew inner leg seams and crotch seams.
4. **Join Bodice and Pants:** Attach the bodice to the pants at the waistline.
5. **Insert Zipper:** Install the front zipper according to pattern instructions.
6. **Add Pockets:** Construct and attach any specified pockets (e.g., cargo pockets, chest pockets).
7. **Finish Cuffs and Hem:** Attach sleeve bands/cuffs and hem the pant legs.
8. **Final Details:** Add any embellishments, patches, or hook and loop tape as per your chosen view.

Simplicity
Pattern
8722



Image: Example of View A, the orange jumpsuit.

Simplicity
Pattern
8722



Image: Example of View B, the olive green hooded jumpsuit.

Simplicity
Pattern
8722



Image: Example of View C, the tan jumpsuit.

5. CARE & MAINTENANCE

5.1 Garment Care

Once your costume is complete, follow the care instructions specific to the fabric you used. Generally, most cottons and blends can be machine washed cold and tumble dried low. Always test a small swatch if unsure about fabric care. Iron on a low to medium setting, avoiding any heat-sensitive embellishments.

5.2 Pattern Storage

To preserve your Simplicity pattern for future use, carefully refold all pattern pieces and place them back into the original envelope. Store the envelope in a dry, cool place away from direct sunlight to prevent yellowing or damage.

6. TROUBLESHOOTING COMMON SEWING ISSUES

Even experienced sewers encounter challenges. Here are some common issues and potential solutions:





- **Puckering Seams:** Check your tension settings, use the correct needle size for your fabric, and ensure you are not stretching the fabric while sewing.
- **Uneven Stitching:** Verify your bobbin is wound correctly, the machine is threaded properly, and the presser foot pressure is appropriate for your fabric.
- **Garment Doesn't Fit:** Double-check your measurements against the pattern's finished garment measurements. Consider making a muslin (test garment) before cutting into your final fabric. Adjustments can be made at side seams, darts, or by altering pattern pieces.
- **Fabric Slipping:** Use more pins, a walking foot, or tissue paper underneath delicate fabrics to prevent shifting.

7. SPECIFICATIONS

Feature	Detail
Brand	Simplicity
Model Number	H0202A1 / 8722
Media Type	Physical Pattern
Material (Pattern)	Paper
Recommended Uses	Costumes
UPC	039363102021
Package Dimensions	8.5 x 5.91 x 0.35 inches
Item Weight	2.92 ounces
Date First Available	June 21, 2019

8. WARRANTY & SUPPORT

Simplicity patterns are produced with high-quality standards. If you encounter any issues with the pattern itself (e.g., missing pieces, printing errors), please contact the retailer where you purchased the pattern or visit the official Simplicity website for customer support. While specific warranties for sewing patterns are not typically offered, your satisfaction is important.

 <p>The cover of the Simplicity Model 725 & 700 Riding Tractors Owner's Manual and Parts List. It features the Simplicity logo at the top left, followed by the text 'OWNER'S MANUAL AND PARTS LIST'. Below this, it says 'MODEL 725 & MODEL 700 RIDING TRACTORS'. At the bottom, it reads 'SIMPLICITY MANUFACTURING COMPANY, INC. EP - 1225'.</p>	<p>Simplicity Model 725 & 700 Riding Tractors Owner's Manual and Parts List</p> <p>This document provides a comprehensive overview of the Simplicity Model 725 and 700 Riding Tractors, including installation procedures, lubrication guidelines, starting and operating instructions, adjustment procedures, and a detailed parts list. It serves as an owner's manual and parts catalog for maintenance and repair.</p>
 <p>The cover of the Simplicity Regent Lawn Tractor Parts Manual. It features the Simplicity logo at the top left, followed by the text 'Parts Manual'. Below this, it says '22 HP B&S Hydro 38" Mower Deck'. At the bottom, it reads 'SIMPLICITY MANUFACTURING COMPANY, INC. EP - 1226'.</p>	<p>Simplicity Regent Lawn Tractor Parts Manual</p> <p>Comprehensive parts manual for the Simplicity Regent lawn tractor, featuring the 22 Gross HP B&S Hydro and 38" Mower Deck. This manual details all components, including diagrams and part numbers, for easy identification and replacement.</p>
 <p>The cover of the Simplicity Scout Plus Vacuum Cleaner Owner's Manual. It features the Simplicity logo at the top left, followed by the text 'VACUUMS'. Below this, it says 'Scout Plus Owner's Manual'. At the bottom, it reads 'SCOUT PLUS'.</p>	<p>Simplicity Scout Plus Vacuum Cleaner Owner's Manual: Operation & Maintenance Guide</p> <p>Explore the Simplicity Scout Plus vacuum cleaner with this official owner's manual. Find detailed instructions on assembly, operation, cleaning, maintenance, troubleshooting, and warranty information for your Simplicity vacuum.</p>
 <p>The cover of the Simplicity S60 Spiffy Vacuum Cleaner Owner's Manual. It features the Simplicity logo at the top left, followed by the text 'VACUUMS'. Below this, it says 'Spiffy Owner's Manual S60'. At the bottom, it reads 'S60'.</p>	<p>Simplicity S60 Spiffy Owner's Manual</p> <p>This owner's manual provides instructions for the Simplicity S60 Spiffy vacuum cleaner, covering assembly, operation, maintenance, and troubleshooting. Learn how to use and care for your vacuum for optimal performance.</p>