

BestMassage Massage Chair

BestMassage Full Body Zero Gravity Shiatsu Massage Chair Recliner Instruction Manual

Model: Massage Chair

Sections:

[Safety Information](#)

[Setup](#)

[Operating Instructions](#)

[Maintenance](#)

[Troubleshooting](#)

[Specifications](#)

[Warranty & Support](#)

1. IMPORTANT SAFETY INFORMATION

Please read all safety instructions carefully before using the massage chair. Failure to follow these instructions may result in injury or damage to the product.

- Keep out of reach of children.
- Avoid contact with skin and eyes.
- If ingested, seek medical help immediately.
- Individuals with medical implants should consult a physician before using this product.
- Ensure the power cord is securely connected and not damaged.
- Do not use the chair in wet environments or near water.
- Do not attempt to disassemble or repair the chair yourself. Contact qualified service personnel.

2. SETUP GUIDE

2.1 Unpacking and Placement

The BestMassage Full Body Zero Gravity Shiatsu Massage Chair is designed for minimal assembly. It arrives in one box, securely packaged. Due to its weight (approximately 161 lbs), it is recommended to have assistance when moving the chair to its desired location. Ensure the chosen location has sufficient space, especially considering the chair's zero-gravity recline feature which requires approximately 2 inches from a wall.

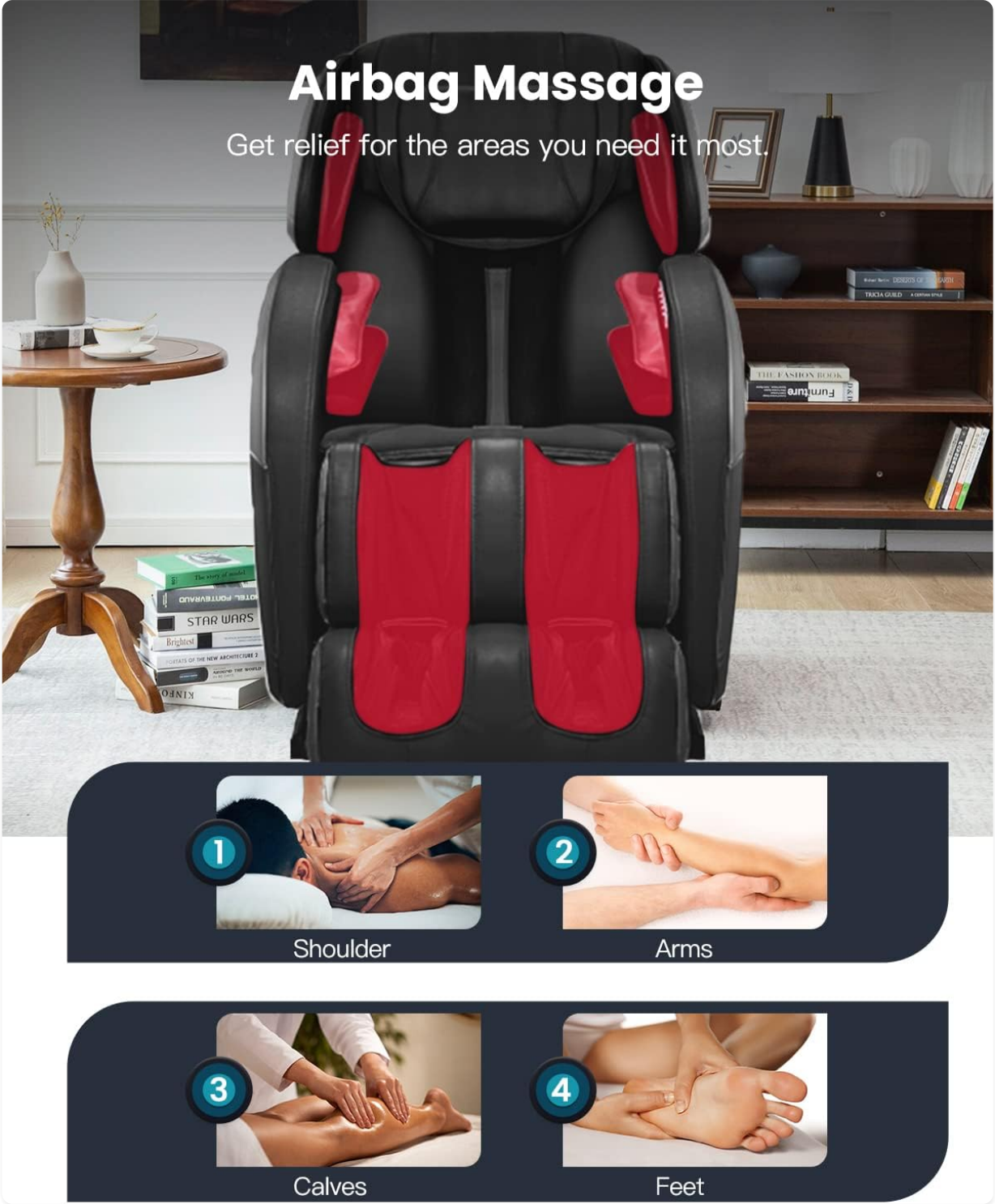


Figure 1: BestMassage Full Body Zero Gravity Shiatsu Massage Chair. The chair is designed for easy placement in your home.

2.2 Initial Connection

Once the chair is in place, simply connect the power cord to a suitable electrical outlet. No tools are required for initial setup. After connecting the power, turn on the machine using the power button on the remote control or the quick access panel.

3. OPERATING INSTRUCTIONS

3.1 Remote Control Overview

The massage chair is operated via a user-friendly remote control. The remote allows you to select various massage programs, adjust intensity, and control chair positioning. Familiarize yourself with the buttons and display for optimal use.



Figure 2: Remote control and quick access buttons. Use these controls to customize your massage experience.

3.2 Smart Body Scan Technology

Upon starting a program, the chair will perform a smart body scan to detect your body size and shape. This technology ensures an individual custom fit massage, targeting key areas accurately along the SL-track from your neck to your buttocks.

Longer SL track

You can enjoy the robot hands massage from neck to thigh.

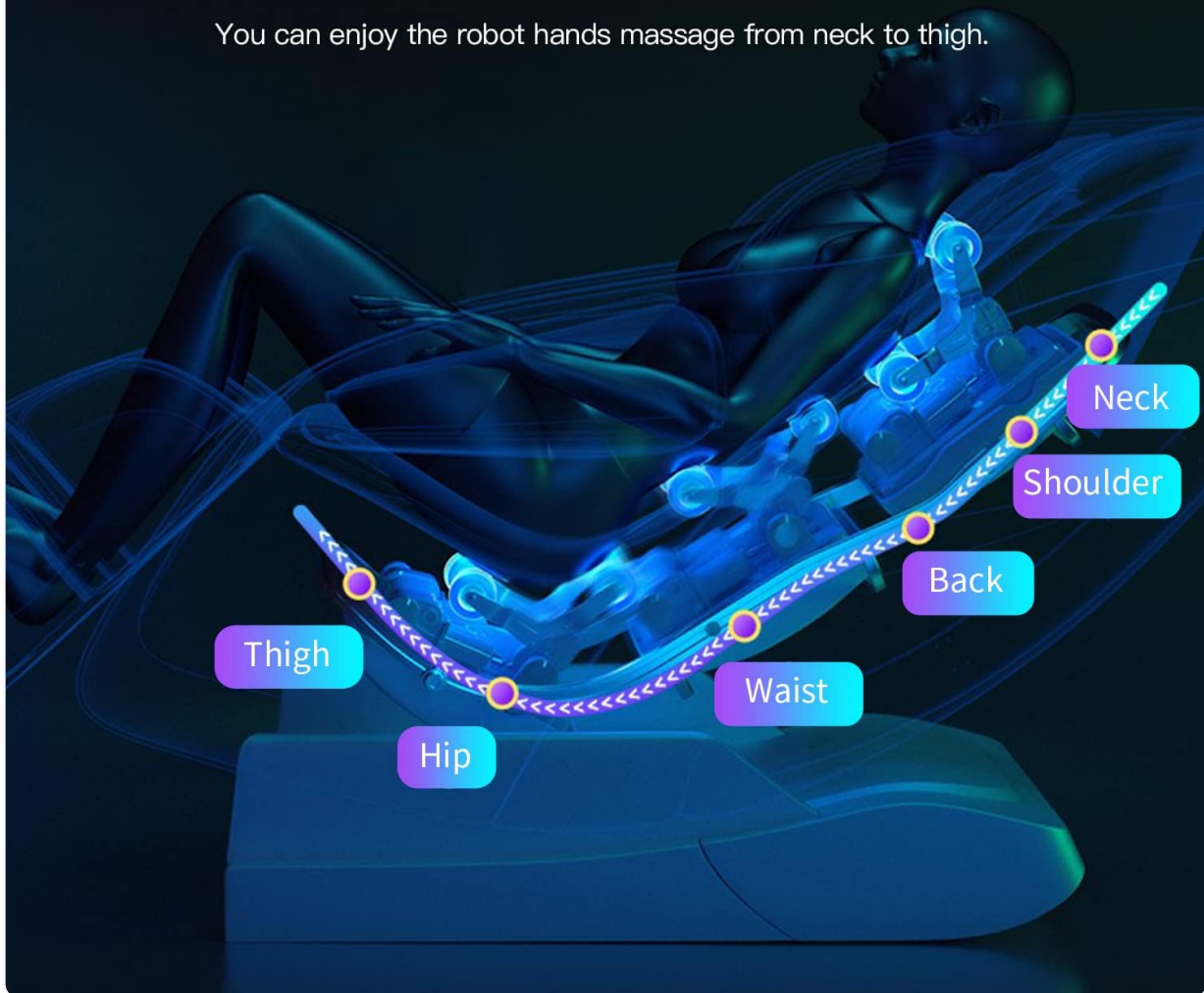


Figure 3: SL-Track massage path. The intelligent massage rollers follow the natural curve of your spine.

3.3 Massage Modes and Programs

The chair offers 7 distinct massage modes and 6 preset auto massage programs for a comprehensive experience:

- **Massage Modes:** Knocking, Clapping, Kneading, Tapping, Shiatsu, Air Pressure, Heating.
- **Auto Programs:** Select from 6 pre-programmed massage routines for various needs.



Figure 4: Airbag massage areas. The chair features 42 airbags strategically placed for full-body compression massage.

3.4 Zero Gravity Positions

Experience enhanced relaxation with three stages of zero-gravity positions. This feature elevates your legs above your heart, reducing pressure on your spine and promoting deeper relaxation.

Zero Gravity Position

Release the pressure of whole body



Figure 5: Zero Gravity Position. This position helps to relieve pressure on the body.

3.5 Additional Features

- **Infrared Heating:** A heating pad in the back area provides soothing warmth to relax sore muscles and enhance the massage experience.
- **Bluetooth Speakers:** Built-in speakers with Bluetooth connectivity allow you to enjoy music or audio during your massage. Connect your device to the chair via Bluetooth.
- **Footrest Extension & Rollers:** The footrest can extend to accommodate different body heights. Integrated foot rollers provide a soothing massage to the soles and heels of your feet.



Bluetooth Speakers

Relax and enjoy music

Heat Therapy

Built in waist heater
promote blood circulation

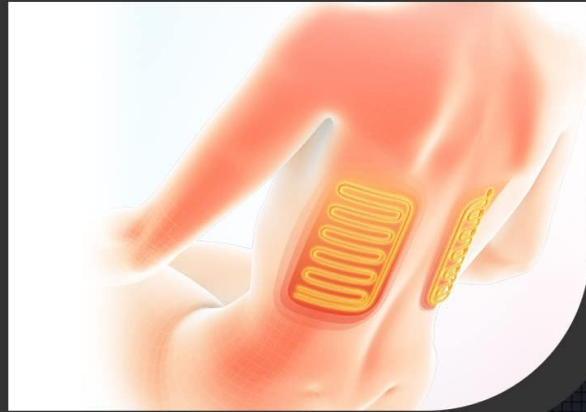
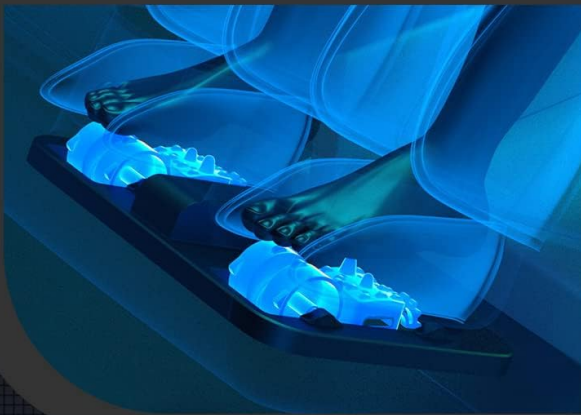


Figure 6: Bluetooth Speakers and Heat Therapy. Enhance your relaxation with integrated audio and soothing heat.

Footrest Extension

According to different body height, the calf rest frame can extended freely.



Foot rollers

The foot roller can sooth your sole and heel

Figure 7: Footrest Extension and Foot Rollers. Customize the footrest length and enjoy a targeted foot massage.

3.6 Official Product Video

Your browser does not support the video tag.

Video 1: Shiatsu Massage Chair Full Body and Recliner. This video provides a visual overview of the chair's features and operation.

4. MAINTENANCE

4.1 Cleaning Instructions

To maintain the appearance and longevity of your massage chair, regularly wipe it clean with a damp cloth. Avoid using harsh chemicals or abrasive cleaners, as these can damage the faux leather material.

4.2 General Care

- Keep the chair away from direct sunlight and heat sources to prevent material degradation.
- Ensure the power cord is not pinched or tangled.
- Avoid placing heavy objects on the chair when not in use.

5. TROUBLESHOOTING

If you encounter any issues with your massage chair, refer to the following common solutions:

Problem	Possible Cause	Solution
Rollers get stuck occasionally.	Temporary misalignment or sensor adjustment.	The rollers typically snap back into place once they reach the top of their track. If the issue persists, power cycle the chair.
Remote control screen is dark or difficult to read in low light.	The remote control is not backlit.	Ensure adequate lighting in the room when operating the remote control.
Difficulty connecting Bluetooth.	Bluetooth pairing sequence or interference.	Ensure the chair has completed its body scan and is in an active massage program before attempting to connect your device. Refer to your device's Bluetooth pairing instructions.
Massage intensity feels too strong or weak.	Incorrect program selection or personal preference.	Adjust the intensity settings using the remote control. Experiment with different auto programs or manual modes to find your preferred level.

If the problem persists after attempting these solutions, please contact customer support.

6. PRODUCT SPECIFICATIONS

Feature	Detail
Brand	BestMassage
Model Name	Zero Gravity Full Body
Color	Black
Product Dimensions	55"D x 29"W x 43"H
Item Weight	161 pounds
Material	Faux Leather
Maximum Weight Recommendation	265 Pounds
Massage Modes	Knocking, Clapping, Kneading, Tapping, Shiatsu, Air Pressure, Heating
Reclining Position Count	6 (including Zero Gravity stages)
Special Features	Arm Rest, Cushion Availability, Foot Rollers, Sturdy Frame, Bluetooth Speaker, Heat Function

Feature	Detail
Power Source	Corded Electric
Indoor/Outdoor Usage	Indoor
UPC	848837086374

7. WARRANTY & SUPPORT

7.1 Product Warranty

A 3-Year Protection Plan is available for this product, offering extended coverage beyond the standard manufacturer's warranty. Please refer to the specific terms and conditions of the protection plan for full details.

7.2 Customer Support

For any questions, technical assistance, or warranty claims, please contact BestMassage customer support. Contact information can typically be found on the product packaging or the official BestMassage website.

The product is eligible for 30-day easy returns. For details on returns, please consult the retailer's return policy.