

[Manuals.plus](#) /

› [VIVOHOME](#) /

› VIVOHOME 162 cm Bird Cage with Play Top and Rolling Stand Instruction Manual

## VIVOHOME VH433

# VIVOHOME 162 cm Bird Cage with Play Top and Rolling Stand Instruction Manual

Model: VH433

## 1. INTRODUCTION

Thank you for choosing the VIVOHOME 162 cm Bird Cage. This manual provides essential information for the safe assembly, operation, and maintenance of your new bird cage. Please read these instructions carefully before use and retain them for future reference. This bird cage is designed to provide a secure and comfortable environment for various bird species, including parrots, conures, lovebirds, cockatiels, and parakeets.



Image: The VIVOHOME 162 cm Bird Cage, black, with a play top and rolling stand, shown in a living room setting with birds inside.

## 2. SAFETY INSTRUCTIONS

---

- Always ensure all parts are securely fastened before placing birds inside the cage.
- Regularly inspect the cage for any damaged or loose components that could harm your pet.
- Keep small children and other pets away from the cage during assembly to prevent accidents.
- Do not hang heavy objects on the cage structure.
- Ensure the cage is placed on a stable, level surface.
- The varnish used on the iron frame is non-toxic, ensuring a safe environment for your birds.

## 3. PACKAGE CONTENTS

---

Before assembly, verify that all the following components are present in your package:

- Bird Cage Frame (Iron, powder-coated black)
- Rolling Stand with Grid Shelf
- 4 Wooden Perches

- 4 Plastic Feeding Cups
- 1 Swing
- Removable Plastic Tray
- Wooden Crossbar for Play Top
- 2 Locking Clips (for securing cage to tray)
- Assembly Hardware (screws, nuts, etc.)

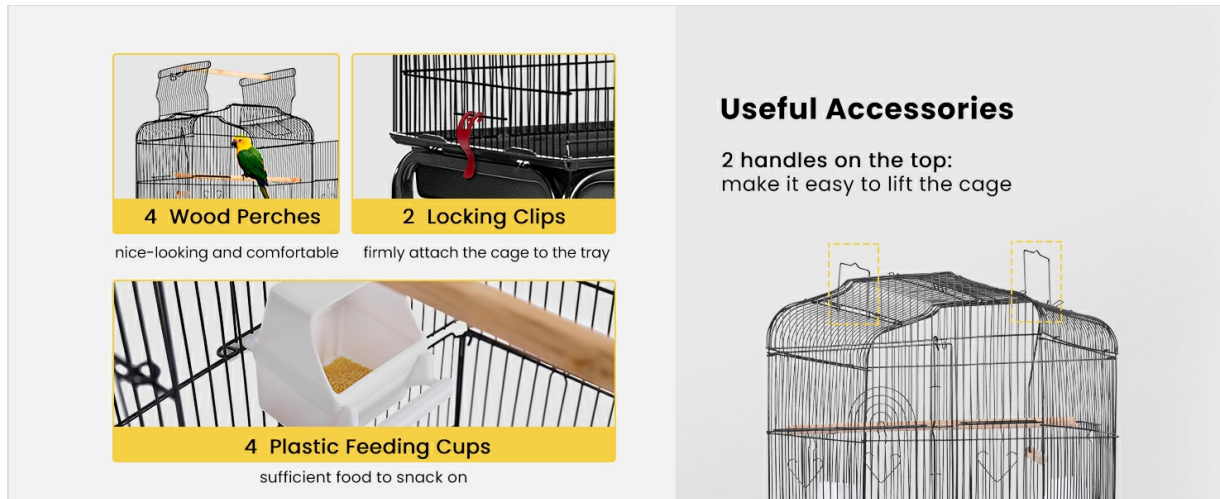
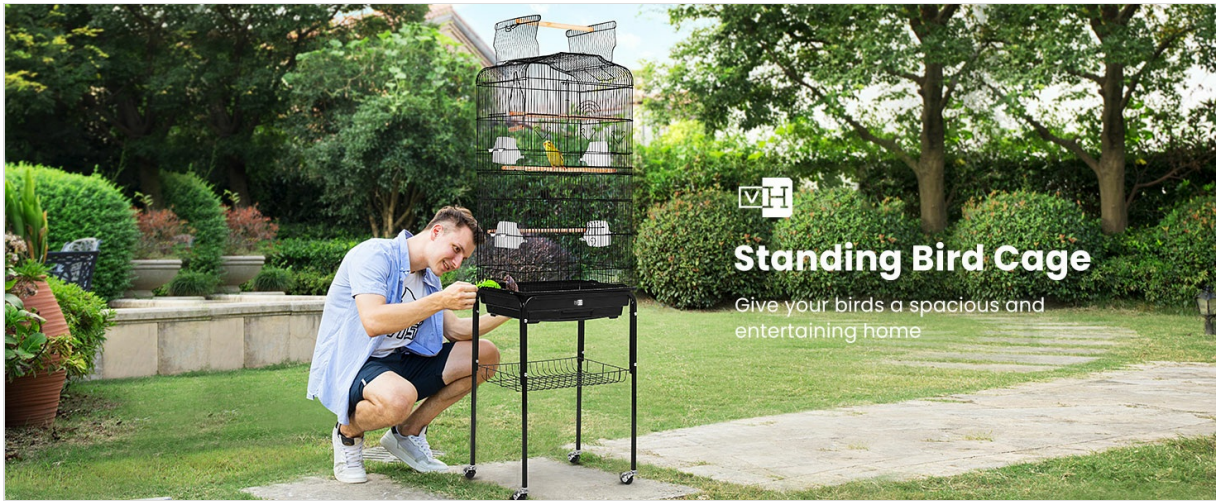


Image: A visual representation of the included accessories: 4 wooden perches, 2 locking clips, and 4 plastic feeding cups.

## 4. ASSEMBLY INSTRUCTIONS

Follow these steps to assemble your VIVOHOME Bird Cage:

1. **Assemble the Rolling Stand:** Attach the four legs to the base frame. Secure the grid shelf to the lower part of the stand. Insert the four swivel casters into the bottom of the legs.
2. **Attach the Cage Base:** Place the main cage frame onto the assembled rolling stand. Ensure it sits firmly and is aligned correctly.
3. **Install the Slide-out Tray:** Slide the plastic tray into the designated slot at the bottom of the cage.
4. **Secure the Cage:** Use the provided locking clips to firmly attach the cage to the tray, preventing accidental detachment.
5. **Install Perches and Swing:** Place the wooden perches at various heights inside the cage. Attach the swing to the top interior of the cage.
6. **Set up Feeding Cups:** Insert the plastic feeding cups into the designated openings on the cage sides.
7. **Assemble Play Top:** Open the top section of the cage and position the wooden crossbar for the play top.



## Standing Bird Cage

Give your birds a spacious and entertaining home

Image: A person assembling the VIVOHOME Standing Bird Cage, demonstrating the ease of setup.



### Movable Casters

- 4 swivel casters that ensure a smooth movement
- Convenient to move it to another place

**360°**swivel

Image: Close-up of the movable casters on the bird cage stand, highlighting their 360-degree swivel for easy movement.

## 5. OPERATING INSTRUCTIONS

### 5.1. Access Doors

The cage features multiple access points for convenience:

- **Main Front Doors:** Two large doors on the front allow for easy access to the cage interior for cleaning or interacting with your birds.
- **Small Feeding Doors:** Convenient smaller doors are located on the sides, allowing you to change food and water without disturbing your pets.
- **Secure Latches:** All doors are equipped with secure latches. To fix the door when closing, pull the latch down.

# Multiple Doorways

For your pet birds to enter and exit



Image: The VIVOHOME bird cage showcasing its multiple doorways, including the main front doors and smaller side doors, with birds perched inside and on the open play top.

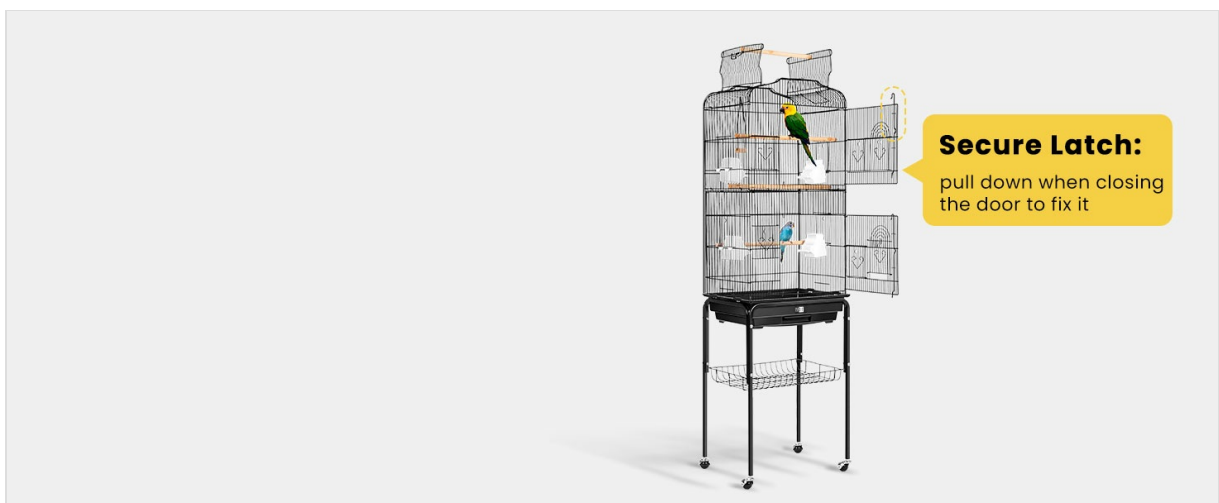


Image: A close-up of the secure latch mechanism on the bird cage door, with an instruction to pull down when closing to fix it.

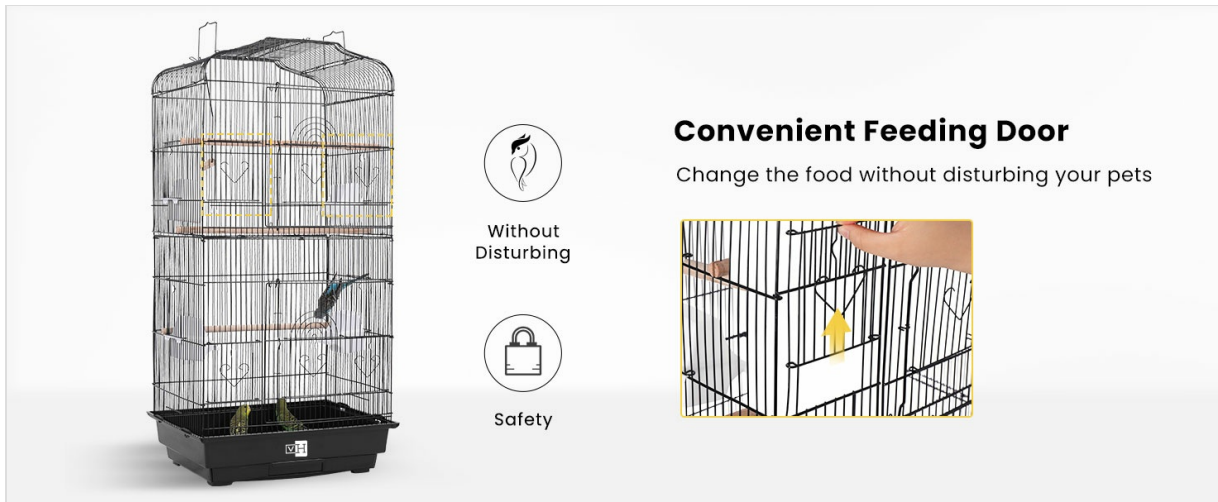


Image: The convenient feeding door on the side of the bird cage, illustrating how food can be changed without disturbing the birds.

## 5.2. Play Top

The top of the cage can be opened and locked to create an additional play area for your birds. The wooden crossbar provides a comfortable perch for them to stand on outside the main enclosure.

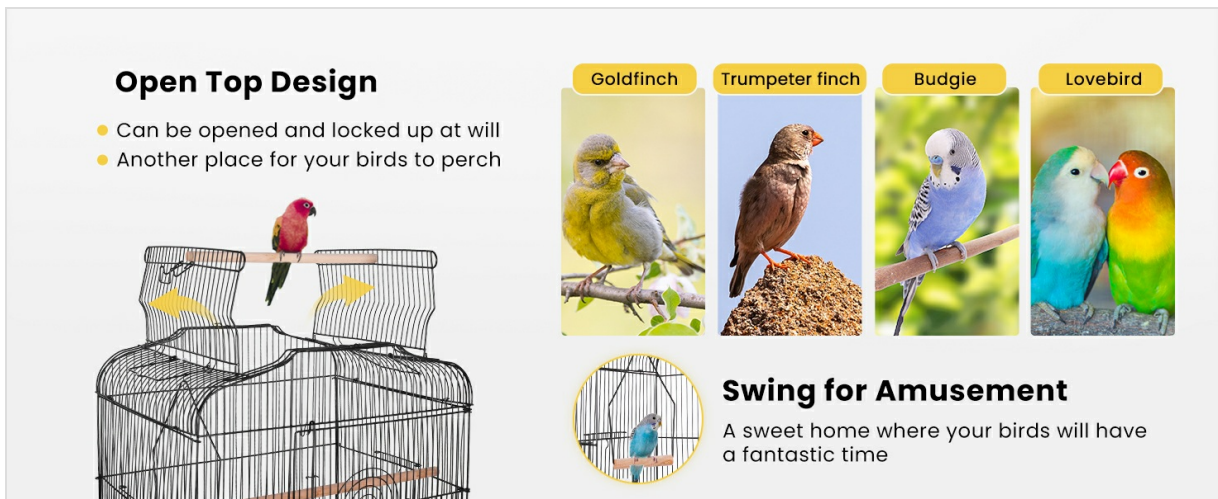


Image: The open top design of the VIVOHOME bird cage, showing a bird perched on the wooden crossbar, providing an additional area for birds to perch and play.

## 5.3. Rolling Stand and Storage

The cage is equipped with 360-degree swivel casters, allowing for easy movement and repositioning. The integrated grid shelf below the cage provides convenient storage for bird food, toys, and other accessories.

# Portable Design

More convenient to use and remove



- ✓ Handles
- ✓ Equipped with white locking



- ✓ Grid Shelf
- ✓ 360° Roller Feet

Image: The VIVOHOME bird cage highlighting its portable design, featuring handles on the cage and 360-degree roller feet on the stand, along with a grid shelf for storage.

## Extra Storage Shelf

- Space-saving to place food or accessories for birds
- Handy for storing other stuff when going out



Image: The extra storage shelf on the rolling stand, demonstrating its use for storing bird food and accessories.

## 6. MAINTENANCE

Regular cleaning is essential for maintaining a hygienic environment for your birds.

- **Cleaning the Slide-out Tray:** The plastic slide-out tray at the bottom of the cage can be easily removed for cleaning. Pull the tray out, dispose of waste, wash with mild soap and water, rinse thoroughly, and dry completely before reinserting.
- **Cage Cleaning:** Periodically wipe down the cage bars and surfaces with a pet-safe cleaner. Ensure all cleaning agents are thoroughly rinsed off.
- **Perch and Accessory Cleaning:** Clean perches, feeding cups, and the swing regularly to prevent bacterial buildup.

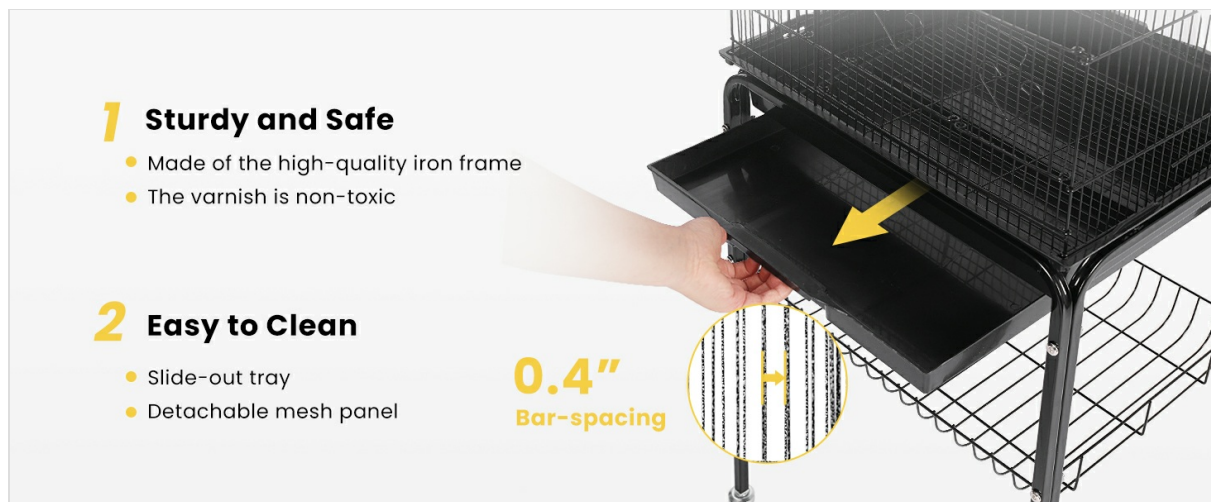


Image: A hand pulling out the slide-out tray for easy cleaning, emphasizing the cage's sturdy and safe construction with a 0.4-inch bar spacing.

## 7. TROUBLESHOOTING

- **Doors not closing securely:** Check if the latch mechanism is obstructed or bent. Ensure the cage frame is not warped.
- **Wheels not rolling smoothly:** Inspect casters for debris or hair. Clean them if necessary. Ensure they are properly inserted into the stand legs.
- **Cage feels unstable:** Verify that all assembly hardware is tightened. Ensure the cage is placed on a flat, level surface.

## 8. SPECIFICATIONS

Feature	Specification
Brand	VIVOHOME
Model Number	VH433
Product Dimensions (L x W x H)	46 cm x 36 cm x 162 cm (18.1 in x 14.1 in x 63.8 in)
Item Weight	15.43 lbs (7 kg)
Material	Iron
Color	Black
Bar Spacing	12.7 mm (0.5 inches)
Number of Doors	3 (Main front doors + feeding doors)

Number of Levels	2
Special Feature	Durable, Play Top, Rolling Stand, Removable Tray
Target Species	Parrots, Conures, Lovebirds, Cockatiels, Parakeets
UPC	885469879035

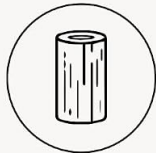
# Specifications

Package Size:  
**16.9x10.6x13.2 in**

Package Weight:  
**17.2 lb**



**Bird Stand**



**Wooden Bar**



Image: A diagram illustrating the key dimensions and features of the VIVOHOME bird cage, including package size, weight, and overall height.

## 9. WARRANTY AND SUPPORT

For detailed warranty information or further assistance, please refer to the official user guide provided by VIVOHOME. A digital version of the user guide can be accessed via the following link:

[VIVOHOME Bird Cage User Guide \(PDF\)](#)

If you require additional support, please contact your retailer or the VIVOHOME customer service department.

