

Manuals+

[Q & A](#) | [Deep Search](#) | [Upload](#)

[manuals.plus](#) /

› [VANTRUE](#) /

› [Vantrue S1 4K Dash Cam User Manual](#)

VANTRUE OnDash S1

Vantrue S1 4K Dash Cam User Manual

Model: OnDash S1 | Brand: VANTRUE

INTRODUCTION

The Vantrue S1 4K Dash Cam is a high-performance dual-channel recording system designed to provide comprehensive coverage and security for your vehicle. Featuring advanced recording capabilities, built-in GPS, and intelligent parking surveillance, the S1 ensures critical moments on the road are captured with exceptional clarity and reliability. This manual provides detailed instructions for setup, operation, and maintenance to help you maximize your dash cam's potential.

WHAT'S IN THE BOX

Please verify that all components are present before proceeding with installation.

- 1X Front dash cam
- 1X Rear car camera with 20ft rear cable
- Car Charger
- 1X 3ft mini USB cable
- Front and rear camera bracket/ adhesive stickers

Discreet Design

Discreet design make it sit unnoticed behind your rear view mirror without blocking the driver's sight.



Image: All components included in the Vantrue S1 Dash Cam package.

SETUP & INSTALLATION

Proper installation ensures optimal performance and discreet placement of your dash cam.

Mounting the Dash Cam

The Vantrue S1 is designed for discreet placement behind your rearview mirror, minimizing obstruction to your view. Use the provided adhesive mounts for secure attachment to the windshield.

Built in GPS

Allow you to track the exact driving route, speed (in KMH or MPH), and location via Vantrue GPS Player.

Live Speed Display

Allows you to view the Live Speed on the dash cam during driving.

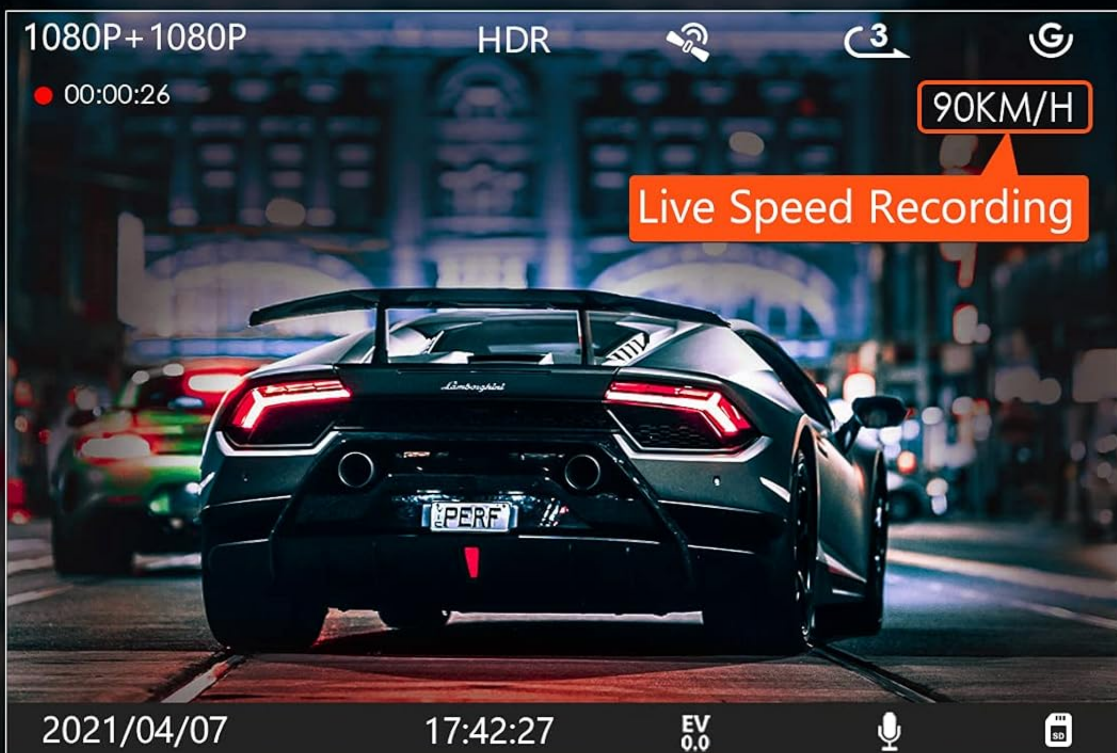


Image: The Vantrue S1 Dash Cam installed for discreet operation.

Connecting Power and Rear Camera

Connect the front dash cam to your vehicle's 12V power outlet using the provided car charger. Route the 20ft rear camera cable discreetly along the vehicle's interior trim to the rear window and connect the rear camera. Ensure cables do not interfere with airbags or vehicle controls.

Inserting the MicroSD Card

The Vantrue S1 supports up to a 256GB MicroSD card (not included). Insert the MicroSD card into the designated slot on the dash cam until it clicks into place. Ensure the card is inserted correctly to avoid damage.

Loop Recording

Auto overwrite the oldest file when the card is full.
Support up 256GB microSD card.



G-sensor

Auto detects a collision and emergency locks the videos to the "event file" to prevent that from an overwrite.



Image: Inserting the MicroSD card into the Vantrue S1 Dash Cam.

OPERATING INSTRUCTIONS

Familiarize yourself with the various recording modes and features of your Vantrue S1 Dash Cam.

Recording Modes

Single 4K Recording

When operating in single front camera mode, the S1 captures video at an exceptionally clear 4K (2880x2160P) resolution at 24 frames per second (FPS). This ensures crucial details like road signs and license plates are highly legible.

2160P 24FPS

HDR

00:00:26

90KM/H



The image shows a silver Porsche Cayenne driving on a road. A callout box compares the clarity of a license plate 'RE69 YWC' captured at 4K resolution versus 1080P resolution. The 4K version is sharp and clear, while the 1080P version is blurry and pixelated.

2021/06/07 17:42:27

EV 0.0



A black dashcam with a lens and buttons. The buttons are labeled 'OPEN' and 'CLOSE'.

4K 2880X2160P
Single Front Recording

captures road signs and
license plate in crystal details.

4K

4K UHD

SONY

Sony Sensor

256GB

256GB Max

Image: Comparison of 4K vs. 1080P clarity for license plate capture.

Dual 1080P Recording

For comprehensive coverage, the front (170° wide-angle) and rear (160° wide-angle) cameras simultaneously record in Full HD 1920x1080P at 30fps. This ensures no details are missed from both the road ahead and behind your vehicle.

Dual 1080P Front and Rear Recording

simultaneously capture the road sign and car plate in crystal details.



Image: Visual representation of dual 1080P front and rear recording angles.

Built-in GPS & Live Speed Display

The integrated GPS module allows for real-time monitoring of your driving speed and location. You can track your route, speed (in KMH or MPH), and location on Google Maps using the Vantrue GPS player software on your computer. This data can be crucial evidence in case of an incident.

24 Hours Parking Mode

Both cameras will auto record once the front car camera detects motion in front of the vehicle. Must be hardwired (OBD ASIN: B07HQ6D8RG) or connect to an external battery.



Image: Live speed display on the dash cam and GPS tracking on a computer.

24/7 Parking Mode

The parking mode feature provides continuous surveillance when your vehicle is parked. In motion detection mode, both cameras will automatically record and save important events when the front dash cam detects movement. Low bitrate recording mode allows for continuous 720P+720P@15fps recording for 24 hours, conserving memory space. For continuous 24/7 parking mode, a hardwire kit (ASIN: B07HQ6D8RG) or an external battery is required.

Discreet Design

Discreet design make it sit unnoticed behind your rear view mirror without blocking the driver's sight.



Image: Overhead view showing 170° front and 160° rear coverage in parking mode.

G-Sensor

The variable sensitivity G-sensor automatically detects sudden shakes or collisions. Upon detection, it emergency locks the current video footage to an "event file" to prevent it from being overwritten by loop recording, ensuring critical evidence is preserved.

Loop Recording

The dash cam records video in seamless loops. When the MicroSD card is full, the oldest unlocked files are automatically overwritten by new footage, ensuring continuous recording without manual intervention.

Time-Lapse

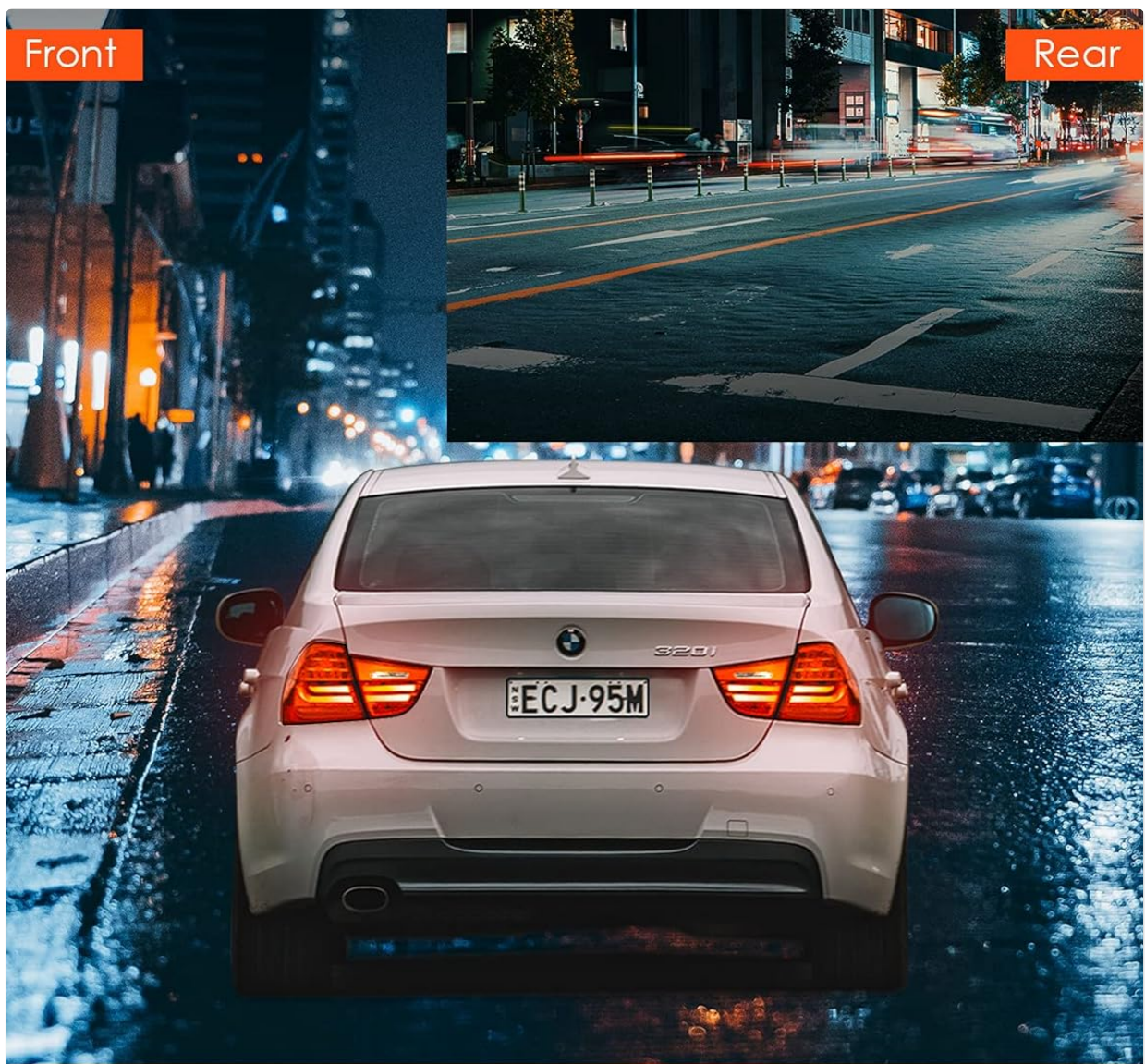
Time-lapse recording allows the dash cam to capture photos at set time intervals and then automatically compile them into a video clip. This feature is particularly useful for monitoring long periods, such as during extended parking or road trips, and helps save memory card space.

MAINTENANCE

Regular maintenance helps prolong the lifespan and ensure optimal performance of your Vantrue S1 Dash Cam.

Heat Resistant Super Capacitor

The S1 utilizes a super capacitor instead of a lithium battery, allowing it to withstand extreme temperatures from -4°F to 158°F. This design enhances reliability and extends the camera's lifespan by mitigating the risk of overheating and explosions.



Sony Night Vision

Automatically adjusts exposure in low light environment and delivers clear and vivid images.



SONY



HDR



F1.47

Image: The super capacitor ensures reliable operation in extreme temperatures.

Cleaning

Regularly clean the camera lenses with a soft, lint-free cloth to ensure clear video quality. Avoid using abrasive materials or chemical cleaners that could damage the lens coating.

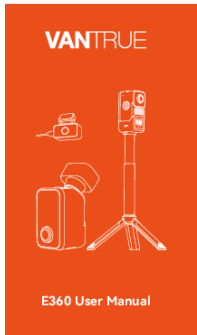
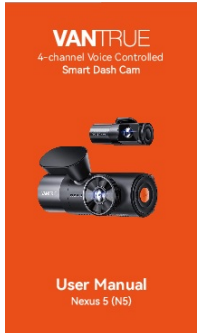



MicroSD Card Formatting

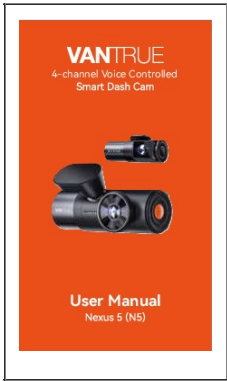
It is recommended to format the MicroSD card regularly (e.g., once every 1-2 weeks) to maintain optimal recording performance and prevent data corruption. This can typically be done through the dash cam's menu settings.

TROUBLESHOOTING

If you encounter issues with your Vantrue S1 Dash Cam, refer to the following common solutions. For more detailed troubleshooting, please consult the full online manual or contact customer support.

- **Camera Freezes/Unresponsive:** Try resetting the device using the reset button (if available) or disconnecting and reconnecting the power. Ensure the MicroSD card is properly inserted and formatted.
- **Related Documents - OnDash S1**

 The cover of the Vantrue E360 User Manual is orange. It features the Vantrue logo at the top, a line drawing of the E360 dash cam on a tripod, and the text 'E360 User Manual' at the bottom.	<p>Vantrue E360 User Manual: Installation, Features, and Support</p> <p>Comprehensive user manual for the Vantrue E360 5.2K 360° panoramic dash cam. Learn about installation, component overview, menu functions, drive and handheld recording modes, WiFi connectivity, app features, parking modes, firmware updates, and support.</p>
 The cover of the Vantrue N5 User Manual is orange. It features the Vantrue logo at the top, the text '4-channel Voice Controlled Smart Dash Cam', a photo of the N5 dash cam, and the text 'User Manual Nexus 5 (N5)' at the bottom.	<p>VANTRUE N5 4-Channel Voice Controlled Smart Dash Cam User Manual</p> <p>A comprehensive guide to the VANTRUE N5 4-channel smart dash cam, covering installation, setup, features like voice control and GPS, operation, specifications, safety warnings, and warranty information.</p>
 The cover of the Vantrue OnDash N2 Pro User Manual is orange. It features the Vantrue logo at the top, a photo of the N2 Pro dual dash cam, and the text 'User Manual' at the bottom.	<p>VANTRUE OnDash N2 Pro Dual Dash Cam User Manual</p> <p>Comprehensive user manual for the VANTRUE OnDash N2 Pro Dual Dash Cam, covering installation, operation, settings, specifications, and warranty information. Learn how to set up and use your dash cam for optimal performance.</p>
 The cover of the Vantrue OnDash N4 User Manual is orange. It features the Vantrue logo at the top, a photo of the N4 3-channel dash cam, and the text 'User Manual' at the bottom.	<p>VANTRUE OnDash N4 3-Channel Dash Cam User Manual</p> <p>Comprehensive user manual for the VANTRUE OnDash N4 3-channel dash cam. Learn about installation, features like parking mode, G-sensor, loop recording, and specifications. Visit www.vantrue.net for support.</p>
 The cover of the Vantrue OnDash S1 User Manual is orange. It features the Vantrue logo at the top, a photo of the S1 dual dash cam, and the text 'User Manual' at the bottom.	<p>VANTRUE OnDash S1 Dual Dash Cam User Manual</p> <p>Comprehensive user manual for the VANTRUE OnDash S1 Dual Dash Cam, covering setup, operation, features, and specifications. Learn how to install and use your dash cam effectively.</p>

 The image shows the front cover of a user manual. It has a solid orange background. At the top, the word 'VANTRUE' is written in white, with '4-channel Voice Controlled Smart Dash Cam' in smaller white text below it. In the center, there is a black and white photograph of the dash cam unit, which is cylindrical with a lens and a small display. At the bottom, the words 'User Manual' are written in white, with 'Nexus 5 (N5)' in smaller white text below it.	<p><u>VANTRUE Nexus 5 (N5) 4-channel Voice Controlled Smart Dash Cam User Manual</u></p> <p>A comprehensive user manual for the VANTRUE Nexus 5 (N5) 4-channel voice-controlled smart dash cam, covering installation, setup, features, app usage, specifications, and important safety information.</p>
---	---