

Top Race TR-212

Top Race Remote Control Dump Truck Toy - Instruction Manual

Model: TR-212 | Brand: Top Race

1. INTRODUCTION AND OVERVIEW

The Top Race TR-212 Remote Control Dump Truck is a 1:14 scale, 10-channel hobby-grade construction vehicle designed for realistic operation. It features strong engines and heavy-duty rubber tires, enabling it to carry loads up to 7 lbs. The truck includes a full-swinging flatbed for authentic dumping action, realistic sounds, and working lights. This manual provides detailed instructions for setup, operation, and maintenance to ensure optimal performance and longevity of your dump truck.



Image: The Top Race TR-212 Remote Control Dump Truck with its remote control. The truck is yellow and black, showcasing its detailed design and robust appearance.

2. WHAT'S IN THE BOX

- Big Remote Control Dump Truck (Model TR-212)
- 2.4GHz Transmitter
- 400mAh 7.4V Ni-CD Rechargeable Battery (for truck)
- USB Charging Cord
- Instruction Manual
- *Note: 4 AA batteries for the transmitter are not included and must be purchased separately.*

3. SETUP GUIDE

3.1. Charging the Truck Battery

1. Locate the 400mAh 7.4V Ni-CD rechargeable battery.
2. Connect the battery to the provided USB charging cord.
3. Plug the USB charging cord into a standard USB power adapter (not included) or a computer USB port.

4. The charging indicator light on the USB cord will illuminate during charging.
5. A full charge takes approximately 2 hours. The indicator light may change or turn off when charging is complete.
6. Disconnect the battery once fully charged to prevent overcharging.

Important: Always supervise battery charging. Do not leave charging batteries unattended.

3.2. Battery Installation (Truck)

1. Locate the battery compartment on the underside of the dump truck.
2. Carefully open the battery compartment cover.
3. Connect the charged 7.4V Ni-CD battery to the truck's power connector, ensuring correct polarity.
4. Place the battery neatly inside the compartment.
5. Close the battery compartment cover securely.

3.3. Battery Installation (Transmitter)

1. Open the battery compartment on the back of the 2.4GHz transmitter.
2. Insert 4 new AA batteries (not included) into the compartment, observing the correct positive (+) and negative (-) polarities.
3. Close the battery compartment cover securely.

3.4. Pairing the Transmitter with the Truck

1. Ensure both the truck and the transmitter have fresh or fully charged batteries installed.
2. Turn on the power switch on the dump truck.
3. Turn on the power switch on the transmitter.
4. The truck and transmitter should automatically pair. A successful connection is usually indicated by a solid light on the transmitter or truck, or an audible confirmation.
5. If pairing fails, turn off both devices, wait a few seconds, and repeat the process.

4. OPERATING INSTRUCTIONS

Familiarize yourself with the transmitter controls before operating the dump truck. The 2.4GHz frequency provides a range of up to 100 feet.

4.1. Transmitter Controls



Image: Diagram of the Top Race TR-212 remote control, showing labels for moving forward/backward, turning left/right, bed up/down, turning lights on, and turning sounds on.

- **Left Joystick:** Controls forward and backward movement.
- **Right Joystick:** Controls turning left and right.
- **"Bed Up" Button:** Raises the dump bed.
- **"Bed Down" Button:** Lowers the dump bed.
- **"Lights On" Button:** Activates the truck's lights.
- **"Sounds On" Button:** Activates the truck's realistic engine and operational sounds.
- **Steering Trim:** Adjusts the steering if the truck does not drive straight.

4.2. Driving the Dump Truck

Use the left joystick to move the truck forward or backward. Push the joystick forward to move forward, and pull it backward to reverse. Use the right joystick to steer the truck left or right. Combine both joysticks for smooth turns and maneuvers.

**BUILT TO LAST
ON ANY TERRAIN**



**EXPERIENCE THE THRILL OF CONTROLLING ROBUST
VEHICLES EQUIPPED WITH DURABLE TIRES.**

Image: The Top Race TR-212 dump truck on a sandy surface, loaded with small logs, demonstrating its ability to operate on various terrains.

4.3. Operating the Dump Bed

The dump truck features a full-swinging flatbed. Press the "Bed Up" button on the transmitter to raise the dump bed and unload materials. Press the "Bed Down" button to lower the dump bed back into position. The powerful servo allows the bed to lift even with heavy loads.

DUMP MATERIALS JUST LIKE A REAL DUMP TRUCK



2 HOURS CHARGE FOR 50 MINUTES OF FUN.

Image: The Top Race TR-212 dump truck actively dumping a load of small rocks onto a dirt pile, illustrating its realistic functionality.

4.4. Lights and Sounds

Enhance your play experience by activating the truck's lights and realistic sounds. Use the dedicated "Lights On" and "Sounds On" buttons on the transmitter to toggle these features. The truck also features automatic beeping sounds when reversing, and blinking lights for turns.

5. MAINTENANCE

- **Cleaning:** After use, especially in dusty or sandy environments, gently wipe down the truck with a dry or slightly damp cloth. Avoid using harsh chemicals or excessive water.
- **Storage:** Store the dump truck and transmitter in a cool, dry place away from direct sunlight and extreme temperatures. Remove batteries from both the truck and transmitter if storing for extended periods to prevent leakage.
- **Battery Care:** Always fully charge the truck's battery before use and allow it to cool down before recharging. Do not overcharge or completely drain the battery.
- **Tires:** Inspect the rubber tires regularly for debris or damage. Clean as needed to maintain optimal traction.

6. TROUBLESHOOTING

Problem	Possible Cause	Solution
Truck does not respond to transmitter.	Low battery in truck or transmitter; not paired; out of range.	Charge truck battery, replace transmitter batteries, re-pair devices, ensure truck is within 100ft range.
Truck moves slowly or lacks power.	Low truck battery; operating on unsuitable terrain (e.g., deep sand, thick carpet).	Recharge truck battery. Operate on firmer, less resistant surfaces for optimal performance.
Dump bed does not raise/lower.	Obstruction; low truck battery; mechanism jammed.	Check for obstructions in the dump mechanism. Recharge truck battery. Gently clear any debris.
Lights or sounds not working.	Feature not activated; low truck battery.	Press the respective buttons on the transmitter. Recharge truck battery.

7. SPECIFICATIONS

- **Model Number:** TR-212
- **Scale:** 1:14
- **Dimensions (L x W x H):** 17.72 x 5.91 x 7.48 inches
- **Weight:** 7.1 Pounds
- **Load Capacity:** Up to 7 lbs
- **Battery (Truck):** 400mAh 7.4V Ni-CD Rechargeable (included)
- **Battery (Transmitter):** 4 x AA (not included)
- **Charging Time:** Approximately 2 hours
- **Playtime:** 45-50 minutes per charge
- **Control Frequency:** 2.4GHz
- **Control Range:** Up to 100 feet
- **Recommended Age:** 12 years and up

PRODUCT DIMENSIONS

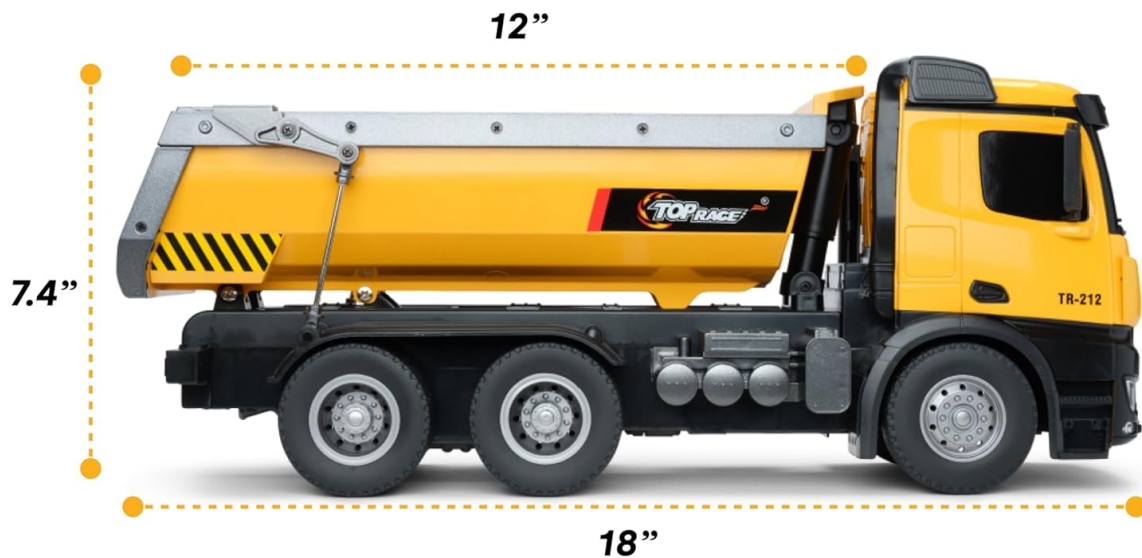


Image: A diagram illustrating the dimensions of the Top Race TR-212 dump truck, showing its length of 18 inches, height of 7.4 inches, and width of 12 inches (likely referring to the bed width or overall width, based on the image).

8. SAFETY INFORMATION

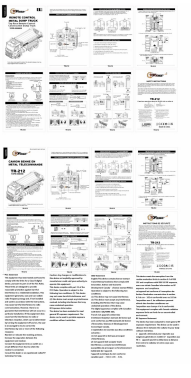

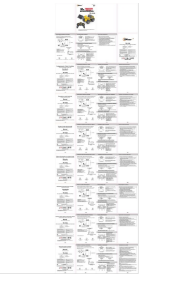

- **Age Recommendation:** This product is recommended for ages 12 and up. Adult supervision is advised for younger users.
- **Battery Safety:**
 - Do not mix old and new batteries.
 - Do not mix alkaline, standard (carbon-zinc), or rechargeable (nickel-cadmium) batteries.
 - Non-rechargeable batteries are not to be recharged.
 - Rechargeable batteries are only to be charged under adult supervision.
 - Exhausted batteries are to be removed from the toy.
 - The supply terminals are not to be short-circuited.
- **Operating Environment:** Operate the truck in open areas free from obstacles, people, and pets. Avoid operating near water, electrical hazards, or on public roads.
- **Avoid Damage:** Do not drop or subject the truck to excessive force. Avoid driving into walls or hard objects.

- **Heat:** Do not expose the product to high temperatures or direct sunlight for prolonged periods.

9. WARRANTY AND SUPPORT

For warranty information and customer support, please refer to the documentation included with your product packaging or visit the official Top Race website. Contact details for support are typically provided on the manufacturer's website or in the product's original sales information.

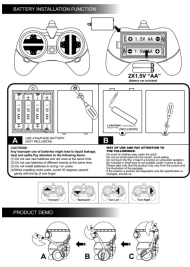
Related Documents - TR-212

	<p>Top Race TR-212 Remote Control Metal Dump Truck - User Manual</p> <p>Comprehensive user manual for the Top Race TR-212 remote control metal dump truck, including operating instructions, safety guidelines, battery charging, and regulatory compliance information.</p>
	<p>Top Race TR-211 Excavator User Manual</p> <p>This manual provides instructions for the Top Race TR-211 15-Channel Fully Functional Professional Excavator, including battery installation, charging, pairing, operation, and safety guidelines.</p>
	<p>Top Race Excavator TR-211 User Manual</p> <p>User manual for the Top Race Excavator TR-211, detailing assembly, operation, and maintenance instructions for this remote-controlled construction toy.</p>
	<p>Top Race TR-113S Radio Control Front Loader Tractor - User Manual and Specifications</p> <p>Comprehensive guide for the Top Race TR-113S 5-channel radio control front loader tractor, including operation, safety warnings, battery installation, and regulatory compliance information.</p>



[Top Race TR-213 22 Channel Radio Control Professional Loader User Manual](#)

User manual and operating instructions for the Top Race TR-213 22 Channel Radio Control Professional Loader model. Includes setup, operation, safety, and troubleshooting information.



[Top Race RC Robot User Manual: Battery Installation & Operation](#)

Comprehensive guide for the Top Race RC Robot (Model TOPR-000301), covering battery installation, safety precautions, usage instructions, and FCC compliance information.