



Manuals.plus /

- › Ade Advanced Optics /
- › Ade Advanced Optics RD3-009-Crusader Red Dot Reflex Sight User Manual

Ade Advanced Optics RD3-009-Crusader

Ade Advanced Optics RD3-009-Crusader Red Dot Reflex Sight User Manual

Model: RD3-009-Crusader | Brand: Ade Advanced Optics

1. INTRODUCTION

This manual provides detailed instructions for the proper installation, operation, and maintenance of your Ade Advanced Optics RD3-009-Crusader Red Dot Reflex Sight. Please read this manual thoroughly before using the product to ensure safe and optimal performance. The RD3-009-Crusader is designed for precision and reliability, featuring a 6 MOA red dot and Motion Awake Technology.

2. PACKAGE CONTENTS

Upon opening your Ade RD3-009-Crusader Red Dot Sight package, you should find the following items:

- Ade RD3-009-Crusader Red Dot Reflex Sight
- Pre-assembled Picatinny mounting plate (may be affixed or packaged separately)
- Lens cloth
- Instruction Manual
- Recoil Reduction Rubber Shim
- Screws for connecting Picatinny Plate
- Allen Wrench
- Battery Opener Coin
- CR2032 Battery
- Protective Cover



Image: All items included in the Ade RD3-009-Crusader Red Dot Sight package, including the sight, mounting plate, tools, and accessories.

Your browser does not support the video tag.

Video: An unboxing of the ADE RD3-009 Red Dot Sight, showing all included components and accessories.

3. KEY FEATURES

- **6 MOA Red Dot:** Provides a clear and precise aiming point.
- **Motion Awake Technology:** The sight automatically turns on to the last brightness setting when motion is detected after 5 minutes of stillness.
- **Doctor Footprint:** Designed to fit optic cuts/plates compatible with Vortex Venom/Burris Fastfire/Doctor footprint.
- **Battery:** Powered by a single CR2032 lithium battery.
- **Durability:** Waterproof design.

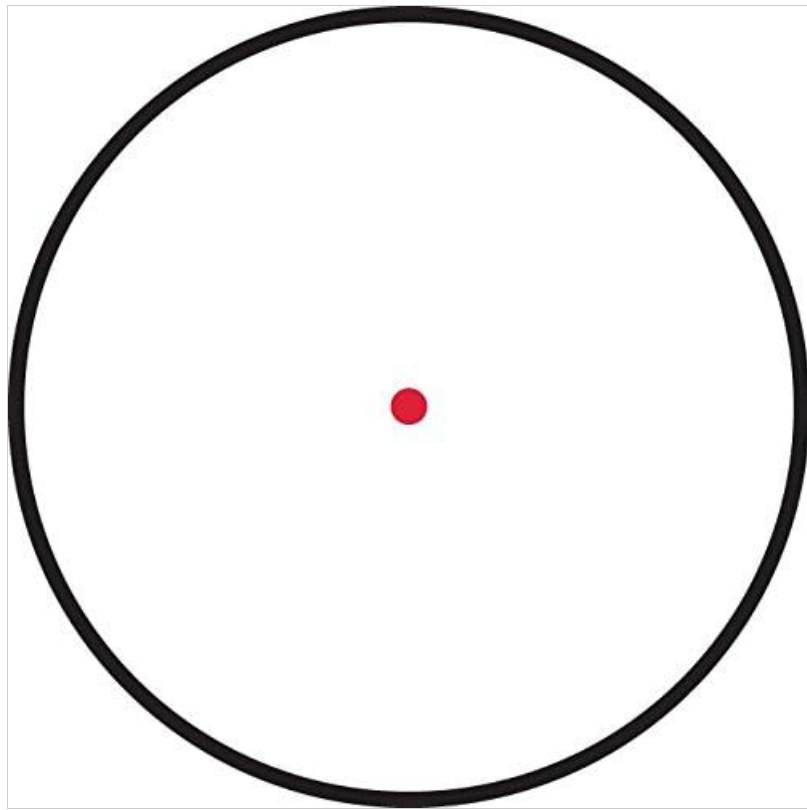


Image: A close-up view of the 6 MOA red dot reticle as seen through the sight, indicating its size and clarity.

4. INSTALLATION

4.1. Detaching from Picatinny Mount

The ADE RD3-009-Crusader Red Dot Sight comes with a pre-assembled Picatinny mounting plate. To attach the red dot to other handgun mounting plates, you must first detach it from the Picatinny plate.

1. Locate the two M3.5X6mm screws positioned behind the glass frame on the red dot sight.
2. Use the provided Allen wrench to carefully remove these two screws.
3. Once the screws are removed, the red dot sight can be separated from the Picatinny plate.

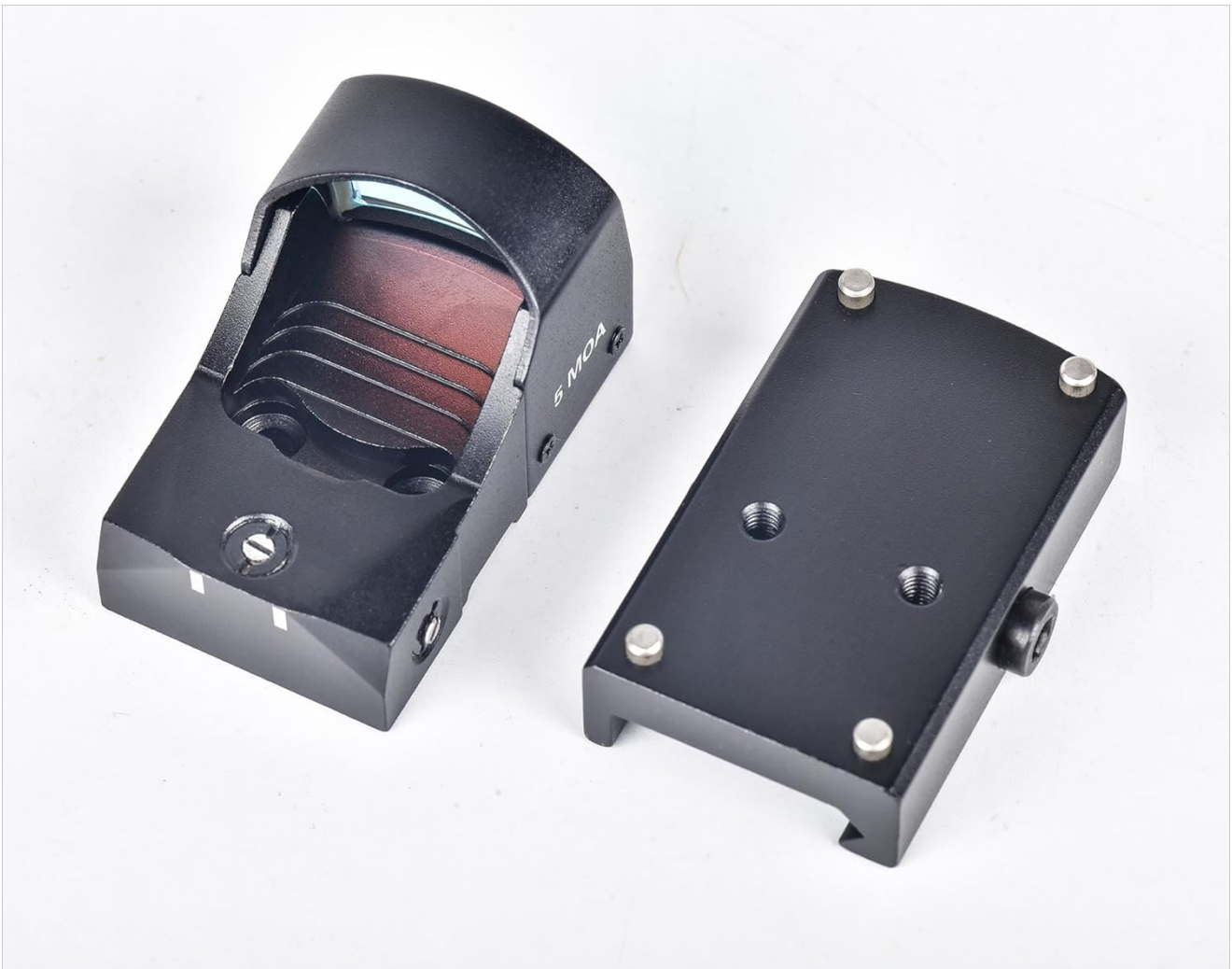


Image: The Ade RD3-009-Crusader Red Dot Sight shown detached from its Picatinny mounting plate, illustrating the two main components.

4.2. Mounting to Handgun MOS System

The RD3-009-Crusader is designed to fit Glock MOS Systems and other optics-ready pistols that utilize a Docter/Vortex Venom type footprint. Ensure your pistol slide has the correct cut or you are using the appropriate adapter plate.

- For Glock MOS Systems (e.g., Gen4 17, 19, 34, 40, 41, 35 and Gen5 17, 19, 34): You must use the Glock-provided #01 plate (not included with this sight).
- For other optics-ready pistols (e.g., Springfield OSP (non-Hellcat), Canik TP9 SFX (non-Elite SC), Walter PPQ Q5 Match, FNX 45 Tactical, IWI Masada): Use the mounting plates provided with your handgun that are marked for DOCTOR/VORTEX VENOM type red dots.
- **Important Note:** Some aftermarket slides, such as PSA Dagger (with Doctor cut), have a precise optic cut based on the curved edge/corner of Vortex Venom. The ADE RD3-009 red dot does NOT have the same curve as Vortex Venom and therefore will not fit these specific curved aftermarket slide cuts.

After placing the sight on the appropriate plate, secure it using the screws provided with your handgun's mounting system or the red dot sight, ensuring they are compatible with the plate and slide.



Image: Side view of the Ade RD3-009-Crusader Red Dot Sight, showcasing its compact design and mounting interface.

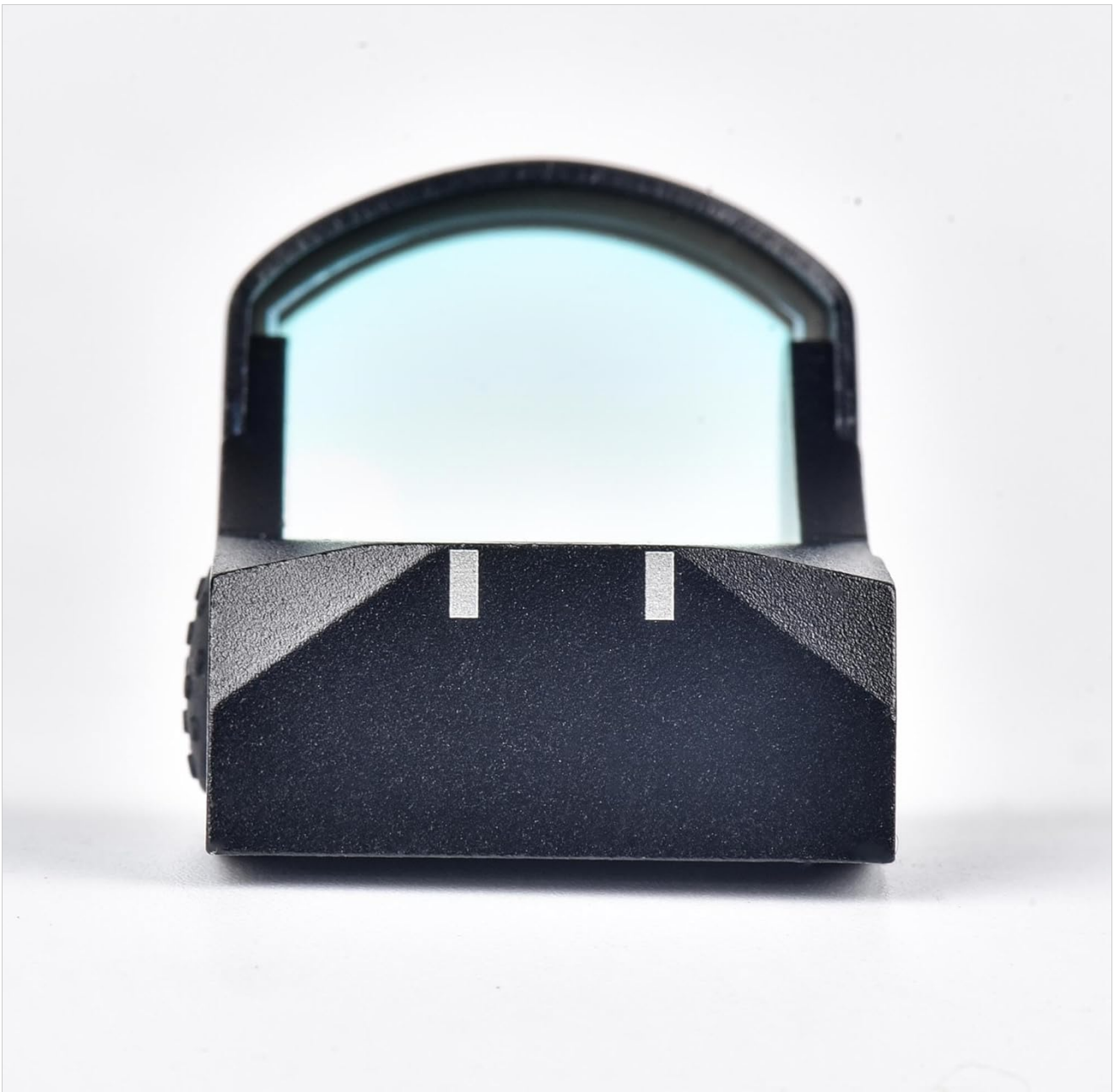


Image: Front view of the Ade RD3-009-Crusader Red Dot Sight, highlighting the lens and overall profile.

5. OPERATION

5.1. Power On/Off and Brightness Adjustment

The RD3-009-Crusader features a single side button for power control and brightness adjustment.

- **To Turn On:** Press the side button. The sight will activate.
- **To Adjust Brightness:** Repeatedly press the side button to cycle through the available brightness levels. The brightness will cycle from lowest to highest and then back to lowest.
- **To Turn Off:** Press and hold the side button for several seconds until the red dot extinguishes.

5.2. Motion Awake Technology

This feature conserves battery life while ensuring the sight is ready when needed.

- If the sight remains still for approximately 5 minutes, it will automatically enter sleep mode to save battery.
- Any motion or vibration will instantly reactivate the red dot to its last set brightness level.
- If the sight was manually turned off (by pressing and holding the button), Motion Awake will not reactivate it. You must manually turn it back on.

5.3. Windage and Elevation Adjustment

The sight features windage and elevation adjustment screws for zeroing. These are typically located on the top and side of the sight body.

- Use the appropriate tool (often a small flathead screwdriver or Allen wrench) to make adjustments.
- Turn the adjustment screws incrementally, observing the change in the red dot's position.
- Always make small adjustments and re-test to achieve desired accuracy.

6. MAINTENANCE

6.1. Battery Replacement

The RD3-009-Crusader uses a CR2032 lithium battery.

1. Locate the battery compartment, usually on the side or top of the sight.
2. Use the provided battery opener coin or a suitable tool to unscrew the battery cap.
3. Remove the old CR2032 battery.
4. Insert a new CR2032 battery with the positive (+) side facing up.
5. Replace the battery cap and tighten it securely to maintain the waterproof seal.

6.2. Cleaning

To maintain optical clarity, regularly clean the lenses.

- Use the provided lens cloth or a soft, lint-free cloth.
- For stubborn smudges, use a small amount of lens cleaning solution designed for optics.
- Avoid using harsh chemicals or abrasive materials that could scratch the lens coatings.
- Keep the sight body clean by wiping it with a damp cloth.

7. TROUBLESHOOTING

Problem	Possible Cause	Solution
Red dot does not turn on	Dead battery, incorrect battery orientation, sight manually turned off, battery compartment not sealed.	Replace battery, ensure correct polarity, press button to turn on, tighten battery cap.
Red dot is dim or flickers	Low battery, dirty lens, incorrect brightness setting.	Replace battery, clean lenses, adjust brightness using the side button.
Inaccurate aiming / Cannot zero	Loose mounting screws, incorrect mounting plate, damaged sight.	Check and tighten all mounting screws. Verify correct mounting plate for your firearm. If issues persist, contact customer support.
Sight does not fit slide cut	Incorrect footprint type, aftermarket slide with non-standard cut.	Ensure your slide or adapter plate is compatible with the Docter/Vortex Venom footprint. Note that some aftermarket slides with curved Vortex Venom cuts are not compatible.

8. COMPATIBILITY

The Ade RD3-009-Crusader Red Dot Reflex Sight is designed with a Docter/Vortex Venom footprint, making it compatible with a range of firearms and mounting systems.

8.1. Compatible Pistol Systems

- **Glock MOS System:** Compatible with Gen4 17, 19, 34, 40, 41, 35 and Gen5 17, 19, 34. Requires Glock-provided #01 plate (not included).
- **Optics Ready Pistols:** Fits directly to pistols with mounting plates marked for DOCTOR/VORTEX VENOM type red dots, including: Springfield OSP (non-Hellcat), Canik TP9 SFX (non-Elite SC), Walter PPQ Q5 Match, FNX 45 Tactical, IWI Masada.

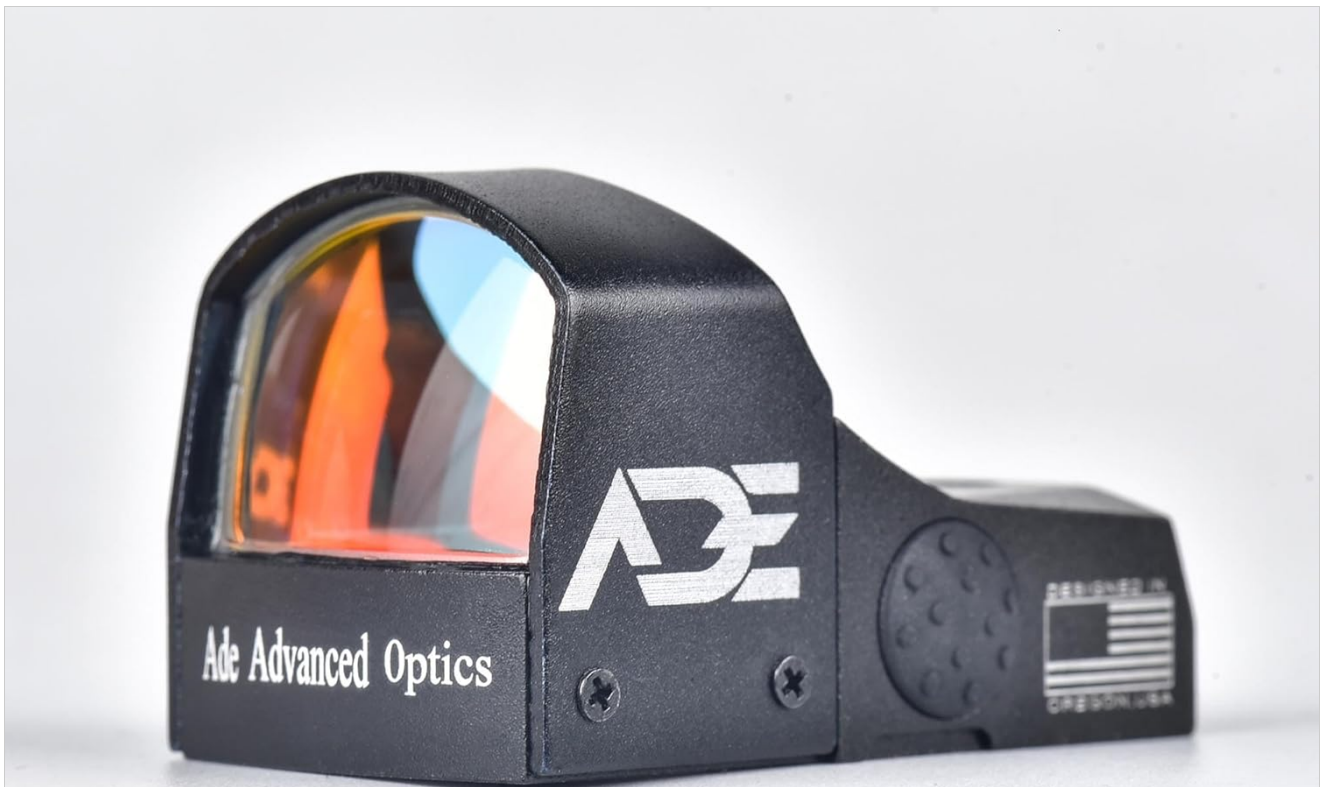
8.2. Footprint Types Explained

Understanding different optic footprints is crucial for proper mounting. The RD3-009-Crusader uses the Docter footprint.

Your browser does not support the video tag.

Video: An overview of common red dot optic cuts, including Docter, RMR, and RMRSc/DPP, demonstrating their differences and compatibility considerations.

The video above illustrates the differences between common optic cuts like Docter, RMR, and RMRSc/DPP. The RD3-009-Crusader is specifically designed for the **Docter Cut** (also known as Venom or Vortex cut).



Fresh Look is here! Starting in June 2024, we've made significant updates: the rear locking screws have been removed, and we've added self-locking and Motion Awake technology for ADE RD3-009.

Image: The Ade Advanced Optics RD3-009-Crusader Red Dot Sight, highlighting its updated design with self-locking and Motion Awake technology, introduced in June 2024.

9. SPECIFICATIONS

Feature	Detail
Model Name	RD3-009-MOS (Crusader)
Brand	Ade Advanced Optics
Color	Red
Reticle Type	6 MOA Dot
Magnification	1 x (Minimum)
Material	Glass
Compatible Devices	Handgun
Mounting Type	Picatinny Mount (included), Docter Footprint compatible
Night Vision	No
Power Source	CR2032 Battery
Special Features	Motion Awake Technology, Waterproof
Item Package Dimensions	5.43 x 5.39 x 1.97 inches
Package Weight	0.21 Kilograms
Date First Available	June 3, 2019

10. WARRANTY & SUPPORT

For warranty information, technical support, or any inquiries regarding your Ade Advanced Optics RD3-009-Crusader Red Dot Reflex Sight, please refer to the warranty card included in your package or visit the official Ade Advanced Optics website. Contact information for customer service is typically available on the product packaging or the manufacturer's website.

Always ensure to register your product if required to activate your warranty.