



Manuals.plus /

› INVERY /

› DockLinQ 30 pin Bluetooth 5.0 Adapter Receiver User Manual

INVERY DockLinQ

DockLinQ 30 pin Bluetooth 5.0 Adapter Receiver User Manual

Model: DockLinQ | Brand: INVERY

INTRODUCTION

The INVERY DockLinQ is a Bluetooth 5.0 adapter receiver designed to upgrade your existing 30-pin music docking station with wireless audio streaming capabilities. This device allows you to connect modern Bluetooth-enabled devices, such as smartphones and tablets, to older docking stations, enabling wireless playback of your music library. This manual provides detailed instructions for setting up, operating, and maintaining your DockLinQ adapter, along with troubleshooting tips and product specifications.

WHAT'S IN THE BOX

Upon unboxing your DockLinQ Bluetooth adapter, please verify that all components are present:

- DockLinQ Bluetooth Adapter
- 3.5mm Audio Cable
- User Guide (this document)

SETUP INSTRUCTIONS

Follow these steps to set up your DockLinQ adapter and begin streaming audio wirelessly:

1. **Insert the DockLinQ Adapter:** Locate the 30-pin connector on your compatible music docking station. Carefully align the DockLinQ adapter with the 30-pin port and firmly insert it. Ensure a secure connection.

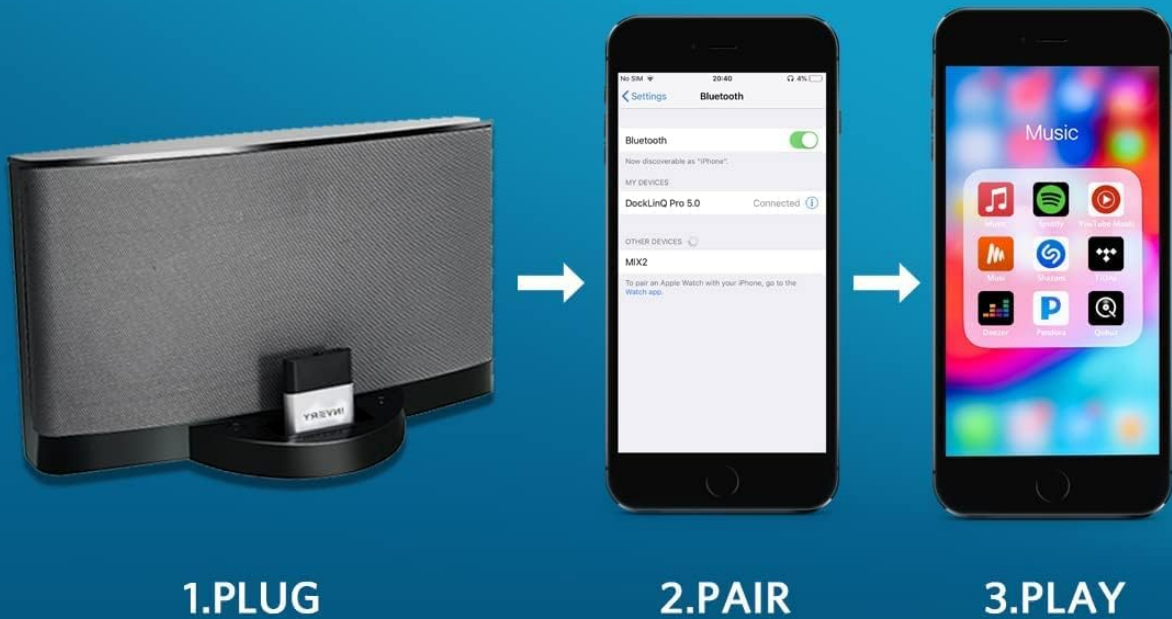


Image: A hand inserting the INVERY DockLinQ Bluetooth adapter into the 30-pin port of a Bose SoundDock speaker system. This illustrates the first step of physical connection.

2. **Power On the Docking Station:** Turn on your music docking station. The DockLinQ adapter will power on automatically when connected to a powered dock.
3. **Enable Bluetooth on Your Device:** On your smartphone, tablet, or other audio source, navigate to the Bluetooth settings and ensure Bluetooth is enabled.
4. **Pair with DockLinQ:** In your device's Bluetooth settings, search for available devices. Select "DockLinQ" from the list to initiate the pairing process. Once paired, your device will show "Connected" next to "DockLinQ".

Plug Pair Play

Easy Plug, Fast Bluetooth Pairing, Play Music Wirelessly



- Stream music or audio from any of your favorite apps including Spotify, Youtube, Pandora, Deezer, Amazon music, Apple music Audible etc
- Supports any version of iOS and Android devices including iPhone iPad, Samsung, LG, HTC, Nokia, Google Pixel etc.

Image: A visual guide demonstrating the three simple steps: 1. Plug the DockLinQ into the speaker, 2. Pair your mobile device via Bluetooth settings, and 3. Play music wirelessly. This highlights the ease of setup.

5. **Begin Audio Playback:** Once successfully paired, open your preferred music application (e.g., Spotify, Apple Music, YouTube Music) on your device and start playing audio. The sound will now be streamed wirelessly through your docking station.

The DockLinQ has a Bluetooth range of approximately 70 feet in open air. It also supports pairing with two devices simultaneously, allowing for seamless switching between audio sources.

OPERATING INSTRUCTIONS

General Operation

After initial setup, the DockLinQ will automatically attempt to connect to the last paired device when the docking station is powered on and the device's Bluetooth is active. If multiple devices are paired, ensure the desired device's Bluetooth is active and selected.

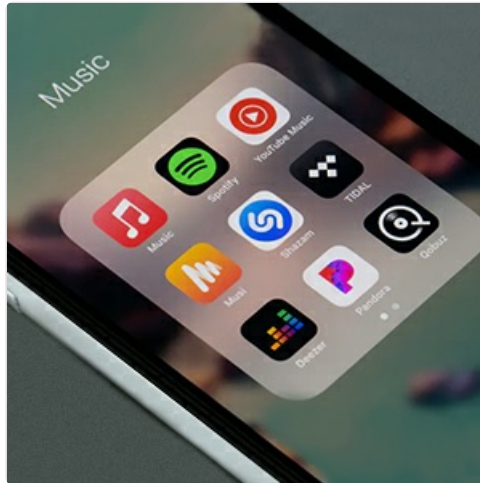


Image: A close-up of a smartphone screen showing icons for popular music streaming applications like Spotify, YouTube Music, Pandora, and Deezer. This illustrates the variety of audio sources compatible with the DockLinQ.

Using with Voice Commands (e.g., Amazon Echo Dot)

The DockLinQ can be integrated with smart speakers that support Bluetooth audio output, such as the Amazon Echo Dot, to enable voice-controlled music playback through your docking station.

1. Open the Alexa app on your mobile device.
2. Navigate to the Bluetooth settings within the Alexa app for your Echo Dot.
3. Pair your Echo Dot with the DockLinQ adapter.
4. Once paired, you can issue voice commands to your Echo Dot (e.g., "Alexa, play music") and the audio will be routed through the docking station connected to the DockLinQ.

Work with Amazon Echo Dot

1. Open Alexa App to find bluetooth settings
2. Pair Echo Dot Alexa with DockLinQ
3. Tell Echo Dot to play music
4. The music will come out from docking station via DockLinQ



Image: A visual representation of the DockLinQ adapter connected to a speaker, with an Amazon Echo Dot nearby. Arrows indicate the flow of audio from the Echo Dot, via Bluetooth, to the DockLinQ and then to the speaker, demonstrating voice command integration.

COMPATIBILITY

The DockLinQ adapter is designed for a wide range of 30-pin iPod/iPhone music docking stations. However, it is crucial to verify compatibility before use.

Compatible Docking Stations

The DockLinQ is compatible with many popular 30-pin docking stations, including:

- Original Bose SoundDock, Bose SoundDock I, SoundDock II, Portable SoundDock, SoundDock 10
- Other 30-pin Music Docking Stations (refer to the detailed compatibility list below).

<h1 style="text-align: center;">Docks Compatible with DockLinQ</h1> <p style="text-align: center;">Supports any iOS and Andriod devices including iPhone,iPad,Samsung,Ig,Google Pixel</p>			
Manufacturers	Models compatible with DockLinQ	Manufacturers	Models compatible with DockLinQ
Alesis	MultiMix8	Kicker	iK5
Altec Lansing	iM7, iM9, iM11, iM600, iMT325, iMT620, iMT702JMT800, M202, M402, T612	Klipsch	iGroove iPod Dock models 1000330 and 1001092, iGroove HG1006819, iGroove SXT1007267, iGroove SXT1008329, iGroove SXT1009098
Arcam	rCube Portable Speaker		
Apple	iPod Hi-Fi		
Beats by Dr Dre	Beat by Dr. Dre, Beatbox	Logic3	JiveBox
Bose	Original SoundDock for iPod, SoundDock Portable, SoundDock I, SoundDock II, Sound Dock 10, Wave System III and II with Connect Kit for iPod,	Logitech	MM50, Audio Station S-0217A, S135i, S315i, S715i, Pure Fi Anywhere 2, Pure Fi Anywhere S-0001
Boston Acoustics	Duo-i Plus	Merkury Innovations	MI-CR5010
Brookstone	BoomBox for iPod 623405, BoomBucket	Memorex	MA2213, MA9010MS, MI3005 iMove, MiHTS302,M2290
Cambridge Soundworks	745i,765i,8046	Monster	Tron IPD-DKEFS
Creative Labs	D160	Marantz	IS201dock
Crosley	1701AiJuke	Onkyo	DS-A3,DS-A4
Cyber Acoustics	CA461	Panasonic	SA-BT100
DLO	HomeDock for iPod, HomeDock Deluxe	Philips	AJ7030, AJ7035, AJ7040D, DC320/37, DC390/37, DCB291, DCB293, DCB352, DCD132, DCM2020, DCM230/37, DS1100, DS1110, DS1200, DS3000, DS3010/37, DS3510, DS7550, DS7700
Fatman	iTube Dock		
Fluance Focal	FiSDK500 xs 2.1		
Geneva	Sound System Model L	Polk Audio	HD Radio I-Sonic, Midock Studio, MiDock 10
Griffin Technology	Amplifi 2.1 model 1200-ITSPKR, Evolve	Pyle	Home PiDock1
Harmon Kardon	Go + Play, Go + Play II	Samson	Expedition XP40i
iCraig	CHT907, CHT910, CHT917, CMB3209 Alarm Clock	Samsung	HW-C700 with iPod dock
iDeck	Integrated Car Cassette for iPod	Sharper Image	SA255JTowerSM252
iHome	iA9, iA 5, iA17, iA63, iA100, iD37, iD7, iD8, iD91, iD99, iH16U, iH4, iH5, iH6, iH8, iH9, iH15, iH19 (2Go), iH27, iPI, iP2, iP4, iP9, iP11, iP16, iP21, iP23, iP37, iP46, iP87, iP90, iP97	Skullcandy	Skull Candy pipe, Vandal S7LACZ-04
		Soundfreak	SFQ-01
iLive	IB289JBPD882B CD/DVD/iPhone Boombox, iHS3, ISP389, IS608, ITP100B	Sony	AIR-SW10Ti, CPF-iPOOIP, ICFTiP, ICF-7iP, ICF-C05iP, ICF-C1iPMK2, ICF-CSiOiP, RDH-GTK1i, RDP-M15iP, RDP-M5iP, RDP-V20iP, RDP-X30iP, RDP-XFIOiP, RM-AMU009, SRS-GUIOiP, ZS-S2iP, ZS-S4iP, Marine Stereo CDX-H905ip
iLuv	iMM747J920JWIN		
ION	Block Rocker		
iPort	IW-20	Speakal	iPig
iTec	T2406 iStereo	TEAC	CD-X10i,SR-L250iB,SR-LX5i
JBL	MR 17 Marine Stereo, Onstage 2, On Stage 3, On Stage 4, On Stage 200iD, On stage Micro, On Beat, On Time 200P,On Time Micro, Radial Micro 700	Tivoli	Audio iSongBook, iYiYi
		Vers	2X
JVC	RD-N1, Boomblaster RV-NB70B, Kaboom RV-B50	Yamaha	MCR-230, PDX-11, PDX-30, PDX-31, PDX-60,E810,TSX-70zTSX-130

Image: A comprehensive table detailing various manufacturers and their specific models of 30-pin docking stations that are compatible with the DockLinQ adapter. This list includes brands like Altec Lansing, Bose, JBL, Logitech, and more.



Home Docks



Car Docks (Limited)

Incompatible Docking Stations and Systems

The DockLinQ is **not compatible** with all 30-pin docks, especially certain car audio systems. Please review the following list of known incompatible systems to avoid issues:

- **Car Docks:** Does NOT work with Audi, VW, Mercedes, BMW, Infiniti, Nissan, etc. For car iPod connectors, consider the Airdual Bluetooth adapter.
- **Specific Home Docks:** Refer to the detailed incompatibility list below.

Docks NOT Compatible with DockLinQ

DockLinQ NOT work with AUDI, MERCEDES, BMW, INFINITI

Manufacturers	Models NOT compatible with DockLinQ	Manufacturers	Models NOT compatible with DockLinQ
Altec Lansing	M602, IMT630 (DockLinQ too thick), IMT810	Philips	AJ32700/17, DCM5090/10, DCM580, Fidelio DS9000, DS9, DS9/37, DS8550, DS8530, DS8500
Anthem	MRX500	Pioneer	STZ-D10Z, X-EM21, XW • NAS3, XW- NAV1-K
Bang & Olufsen	BeoPlay A8, BeoSound 8	Polk	MiDock Studio
Bose	Lifestyle V25z Lifestyle V35, Wave III Dock with Bose Link Cable	Pyle	PSBMGOi, Tower 2.1
Bowers & Wilkins	Zeppelin, Zeppelin, Air, Zeppelin Mini	Russound	BGK-1 iBridge
Brookstone	iPod Stereo Dock PS236A, iDesign Powerspeaker	Samsung	All models of Home Theater and/or Blu-Ray devices
Cambridge Audio	iD100	Sangean	WR-5
Channel Vision	iBus A-0314, iBus AB-313 Whole House Audio	Pure	i20
Denon	ASD-RR ASD-51W, DSD-500	Sharp	GX-M10
Directed Electronics	Soloist Universal Sound System	Sony	AIR-SA15TI, AIR-SA20PK, BDV-E300, BDV-E500W, BDV-T10, BDV-T11, BRAVIA Home Theater System, CMT-BX20i, CMT-CX4iPzCMT-FX300iz CMT-LX20i, CMT-LX30iRf CMT-MX500i, CMT-MX550i, CMT-V50iPz DAV-DHX576WF, DAV-HDX589W, DAV-HDX285, DAV-HDZ273, EZW-RT10 Airplay, Digital Media Port Cradle TDM-iPIO, HCD-BX20L HCD-LX201, HCD-MX500L HT-SS380, ICF-CD3iPz ICF-CL75iP, ICF-CS15iP, LBT-ZX66L MHC-EC6% MHC-EC609iP, MHC-EC709iP, MHC-EC909iP, NA5-SV20i, RDH-GTK33iP, RDH-SK8iP, RDP-X200iP, RDP-X500iPr RDP-X50iP, RDP-X60iP, TDM-iP10fTDM-iP20zTDM-iP50, XDR-S10hdiPz S-AirPlay, S-Air Wireless, SS • SLK2i, NAC-SV 10i, CDXM50iP
DLO	HomeDock for iPod	TEAC	DS-H01
Geneva	Sound System Model S	Vers	2X iPod Sound System
Harman Kardon	AVR3600	Wadia	170i Transport iPod Dock
iHome	iDN38, iP49, iH52, iHL64, iP3, iP71	Yamaha	CRX-040, CRX-300, CRX-330, CRX-332, MCR-040, MCR-042, PDX-50, RX-V2700, RX-V667ZTSX-132, YDS-10, YDS-11 Dock for Home Theater Receivers, YDS-12 Dock for Home Theater Receivers, YSP-4100zTSX-140, ISX-800
iLive	IS208BJH3198BJHH810B Home Theater System		
JVC	ux-vj5		
Kenwood	KMR-700U Marine USB/iPod Receiver		
Kicker	iK501		
Klipsch	iFi speaker system, Model i200		
Lanchiya	iPup		
LG	LHB953 Network Blu-Ray Disc Home Theater System		
Logitech	Pure Fi Express Plus S-00067		
Onkyo	CR-445, CR-545, CS-345 CD HiFi Mini, Lunar 350, HT-R580, HT-6305, SBX-300, TX-Sr508zUP-A1		
Panasonic	SA-BT30, SA-BT200, SA-PM500, SA-PT670, SA-PT750, SA-PT950, SA-PT960, SC-BTT370, SC-HC20, SC-HC25, SC-HC30, SC-HC35, SC-HC37, SCHC271, SC-57, DVD		

Image: A table clearly indicating manufacturers and models of docking stations that are NOT compatible with the DockLinQ adapter, overlaid with a large red 'X' to emphasize incompatibility. This includes various car brands and specific home audio systems.



Audi, Mercedes, Volkswagen



Audi MMI 2G



Land Rover, Range Rover, Jaguar

MAINTENANCE

The DockLinQ Bluetooth adapter requires minimal maintenance. To ensure optimal performance and longevity:

- Keep the device clean and free from dust. Use a soft, dry cloth for cleaning.
- Avoid exposing the device to extreme temperatures, humidity, or direct sunlight.
- Handle the 30-pin connector with care to prevent damage. The robust aluminum shell is designed for durability, but excessive force can still cause harm.

TROUBLESHOOTING

If you encounter issues with your DockLinQ adapter, please refer to the following common solutions:

- **No Sound / Device Not Connecting:**

- Ensure the DockLinQ is fully and securely inserted into the 30-pin port of the docking station.
- Verify that the docking station is powered on and functioning correctly.
- Check your audio source device (smartphone, tablet) to ensure Bluetooth is enabled and "DockLinQ" is selected and connected.
- Confirm that your docking station is listed as compatible in the "Compatible Docking Stations" section. If it's on the "Incompatible" list, the DockLinQ will not function with it.
- Try unpairing and re-pairing the DockLinQ from your device's Bluetooth settings.
- Restart both your audio source device and the docking station.

- **Poor Audio Quality / Intermittent Connection:**

- Ensure your audio source device is within the effective Bluetooth range (approx. 70 feet in open air) of the DockLinQ. Obstacles like walls can reduce range.
- Minimize interference from other wireless devices (e.g., Wi-Fi routers, microwaves).
- If multiple devices are paired, ensure only the active streaming device is connected to avoid conflicts.

- **DockLinQ Not Powering On:**

- The DockLinQ draws power from the 30-pin dock. Ensure the docking station is powered on and its 30-pin port is supplying power.
- Some docks may require an iPod/iPhone to be docked initially to activate the 30-pin power output.

SPECIFICATIONS

Detailed technical specifications for the INVERY DockLinQ Bluetooth 5.0 Adapter Receiver:

Model Number	DockLinQ
Bluetooth Version	5.0
Dimensions (L x W x H)	1.77 x 1.77 x 0.39 inches
Item Weight	1.6 ounces
Hardware Interface	Bluetooth, 30-pin connector, 3.5mm Aux Jack
Compatible Devices	iOS and Android devices
Input Voltage	5 Volts (from 30-pin dock)
Shell Material	Aluminium

Robust Aluminium Shell Design

Powerful Bluetooth 5.0 Chipset



5.0
Bluetooth®

Image: An exploded view diagram of the DockLinQ adapter, pointing out key features such as the Power ON/OFF button, indicator light, AUX input, robust aluminum shell, and the 30-pin interface. This illustrates the physical design and components.



Image: A close-up of a circuit board with a chip labeled "Bluetooth 5.0 Chipset," emphasizing the advanced Bluetooth technology integrated into the DockLinQ.



Image: A detailed view of the DockLinQ adapter, specifically highlighting its 30-pin connector designed for dock playback. This shows the primary interface for connecting to docking stations.

WARRANTY AND SUPPORT

For warranty information and technical support, please contact INVERY customer service directly. Refer to the packaging or the official INVERY website for the most current contact details and warranty terms.

You can also visit the product page on Amazon for frequently asked questions and community support: [Amazon Product Page](#)