



Manuals.plus /

› DeltaTrak /

› DeltaTrak FlashLink Mini PDF Logger (Model 31010+00-8) Instruction Manual

DeltaTrak 31010+00-8

DeltaTrak FlashLink Mini PDF Logger (Model 31010+00-8) Instruction Manual

This manual provides detailed instructions for the proper use and operation of the DeltaTrak FlashLink Mini PDF Logger.

1. INTRODUCTION

The DeltaTrak FlashLink Mini PDF Logger is a compact, single-use USB temperature data recorder designed for in-transit monitoring of temperature-sensitive products. It simplifies data retrieval by generating automatic PDF and CSV reports without requiring special software, making it ideal for cold chain logistics.

2. PRODUCT OVERVIEW

The FlashLink Mini PDF Logger features a built-in USB connector and LED indicators for active logging and alarm status. It is designed for ease of use and reliable temperature monitoring throughout its operational period.



Figure 1: DeltaTrak FlashLink Mini PDF Logger. This image displays the compact design of the logger with its integrated USB connector and 'START' button, ready for use.

2.1 Components

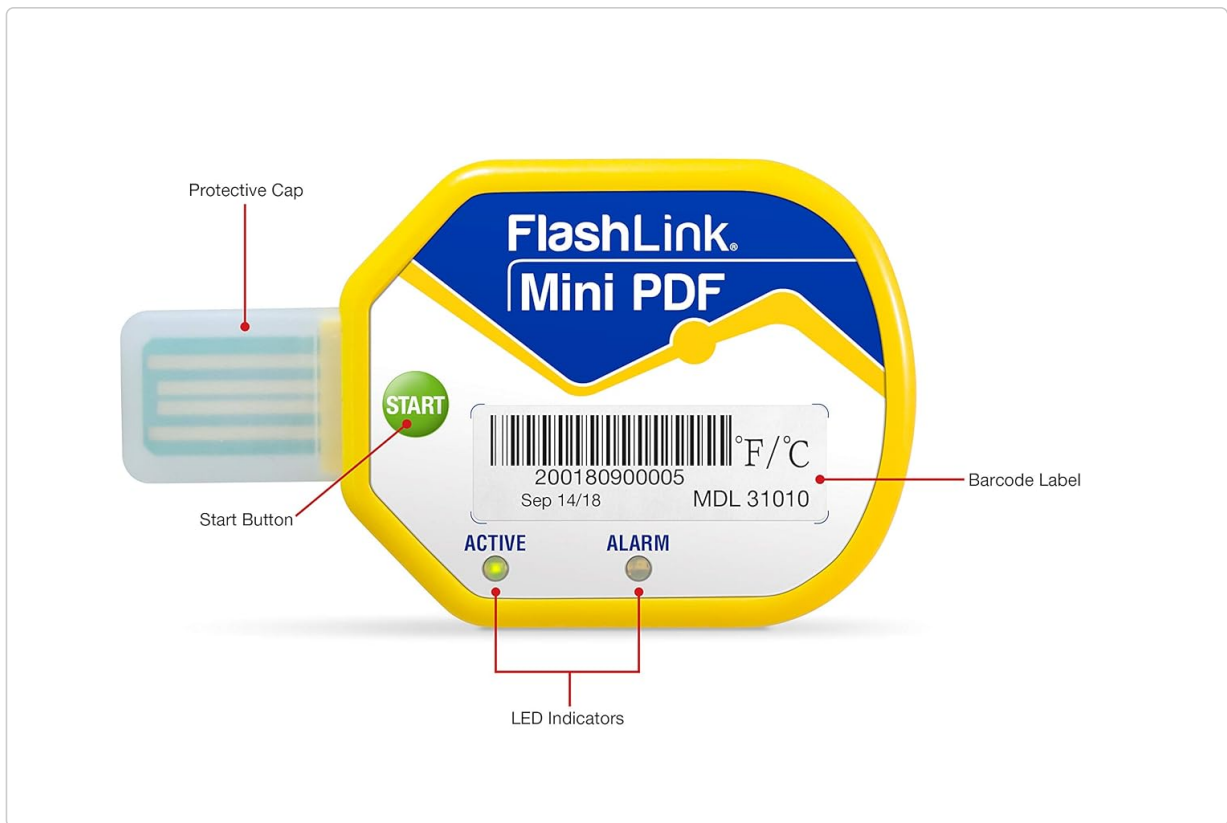


Figure 2: Labeled components of the FlashLink Mini PDF Logger. Key parts include the Protective Cap, Start Button, Barcode Label, and LED Indicators (Active and Alarm).

- **Protective Cap:** Covers and protects the USB connector when not in use.
- **Start Button:** Initiates the temperature logging process.
- **Barcode Label:** Contains a unique identifier and model information (MDL 31010) for traceability.
- **Active LED (Green):** Flashes to indicate that the logger is actively recording data.
- **Alarm LED (Red):** Illuminates or flashes if recorded temperatures exceed or fall below pre-set thresholds.

2.2 Dimensions

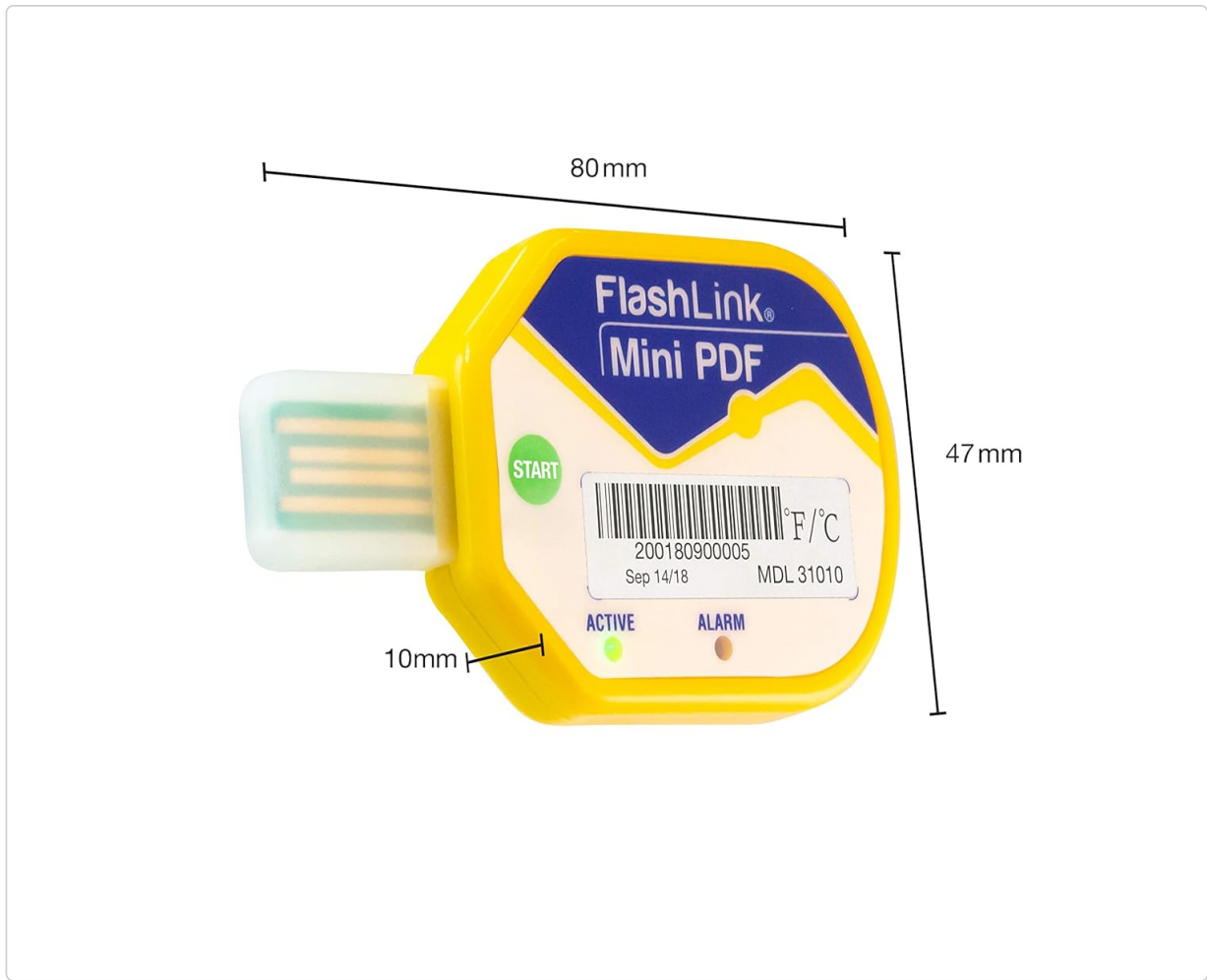


Figure 3: Physical dimensions of the FlashLink Mini PDF Logger. The logger measures approximately 80mm in length, 47mm in width, and 10mm in thickness, making it compact for various applications.

3. SETUP

The FlashLink Mini PDF Logger is designed for immediate use. No prior software installation or complex configuration is typically required before starting a trip.

3.1 Preparing for Shipment



FlashLink.

Mini PDF Logger



Date/Time	Shipper
Receiver	PO #
	

SHIPPER INSTRUCTIONS

1. Fill out the white shipping label located below the logger.
2. Press and hold the green START button until the green ACTIVE LED flashes 5 times.
3. Activated logger flashes green every 12 seconds
4. Remove barcode label from card, apply to shipping document. Serial number on barcode matches PDF trip report for traceability.
5. Use adhesive strips on back of card to place logger on top of pallet or package, or insert card into plastic packing envelope and attach to pallet.

ATTENTION DATA LOGGER HERE



START button

Active Green LED

Alarm Red LED

RECEIVER INSTRUCTIONS

CAUTION: If the green ACTIVE light is not flashing, the logger is in Shadow Log[®] mode (fail safe data logging). Do not push the START button. Follow steps 1 and 2 to recover Shadow Log data. If the logger is active the green ACTIVE light will be flashing. If there has been a temperature excursion, the red ALARM light will be flashing.

1. Remove logger from card
2. Plug into USB port of computer and a window will automatically open to access the PDF Report

INSTRUCCIONES DEL ENVIADOR

1. Llene la etiqueta blanca de envío que se encuentra debajo del registrador.
2. Mantenga presionado el botón verde START hasta que el LED verde ACTIVE parpadee 5 veces.
3. El registrador activado parpadea en verde cada 12 segundos.
4. Retire las etiquetas adhesivas del código de barras, aplicar en el papeleo. Número de serie en el código de barras es consistente con el informe PDF para la trazabilidad.
5. Utilice las tiras adhesivas para colocar el registrador en la parte superior de la paleta o paquete, o inserte la tarjeta en el sobre de plástico y agréguela en la paleta.

INSTRUCCIONES DEL RECIBIDOR

PRECAUCIÓN: Si la luz verde ACTIVE no está parpadeando, el registrador está en el modo Shadow Log[®] (registro de datos a prueba de fallos). No presione el botón START. Siga los pasos 1 y 2 para recuperar los datos de Shadow Log. Si el registrador está activo, la luz verde ACTIVE parpadeará. Si ha habido una excursión de temperatura, la luz roja de ALARM parpadeará.

1. Retire el registrador de la tarjeta
2. Conecte al puerto USB en la computadora para generar automáticamente un archivo PDF.

MODEL 31010 °F/°C
 DELAY START: 30 MIN
 SAMPLING RATE: 10 MIN
 GMT/UTC: 0





Scan for more information



3146 18J1

Figure 4: Shipping card with instructions for the FlashLink Mini PDF Logger. This card provides clear, concise steps for both shippers and receivers in English and Spanish, facilitating proper handling and data retrieval.

1. Fill out the white shipping label area located on the shipping card, below the logger, with relevant shipment details.
2. Press and hold the green **START** button until the green ACTIVE LED flashes every 12 seconds. This confirms that the logger has successfully initiated data recording.
3. Document the serial number from the logger's barcode label onto your shipping documents for traceability.
4. Utilize the adhesive strips on the back of the card to securely attach the logger to the product, inside the

shipping envelope, or to the pallet for optimal temperature monitoring.

4. OPERATING INSTRUCTIONS

4.1 Starting the Logger

To begin temperature logging, press and hold the green **START** button on the device. The green **ACTIVE** LED will flash every 12 seconds, confirming that the logger is actively recording data. The logger is capable of recording data for up to 85 days, depending on its configuration.

4.2 Monitoring Status

The logger provides visual feedback through its LED indicators:

- **Green ACTIVE LED:** Flashes every 12 seconds when logging is active and within normal parameters.
- **Red ALARM LED:** Flashes if the recorded temperature has exceeded or fallen below the pre-set high or low temperature thresholds.

5. DATA RETRIEVAL AND REPORTING

The FlashLink Mini PDF Logger generates automatic PDF and CSV reports when connected to a computer, eliminating the need for proprietary software installation.

5.1 Retrieving Data

1. Carefully remove the protective cap from the USB connector.
2. Plug the logger directly into a standard USB port on a computer or compatible tablet.
3. The logger will be recognized as a removable drive. A window will typically open automatically, providing access to the generated PDF report and CSV data file.

5.2 Viewing Reports

The logger automatically generates a comprehensive PDF report and a CSV file containing all recorded temperature data. These reports can be viewed and saved on any PC or tablet with a standard PDF viewer and spreadsheet software.

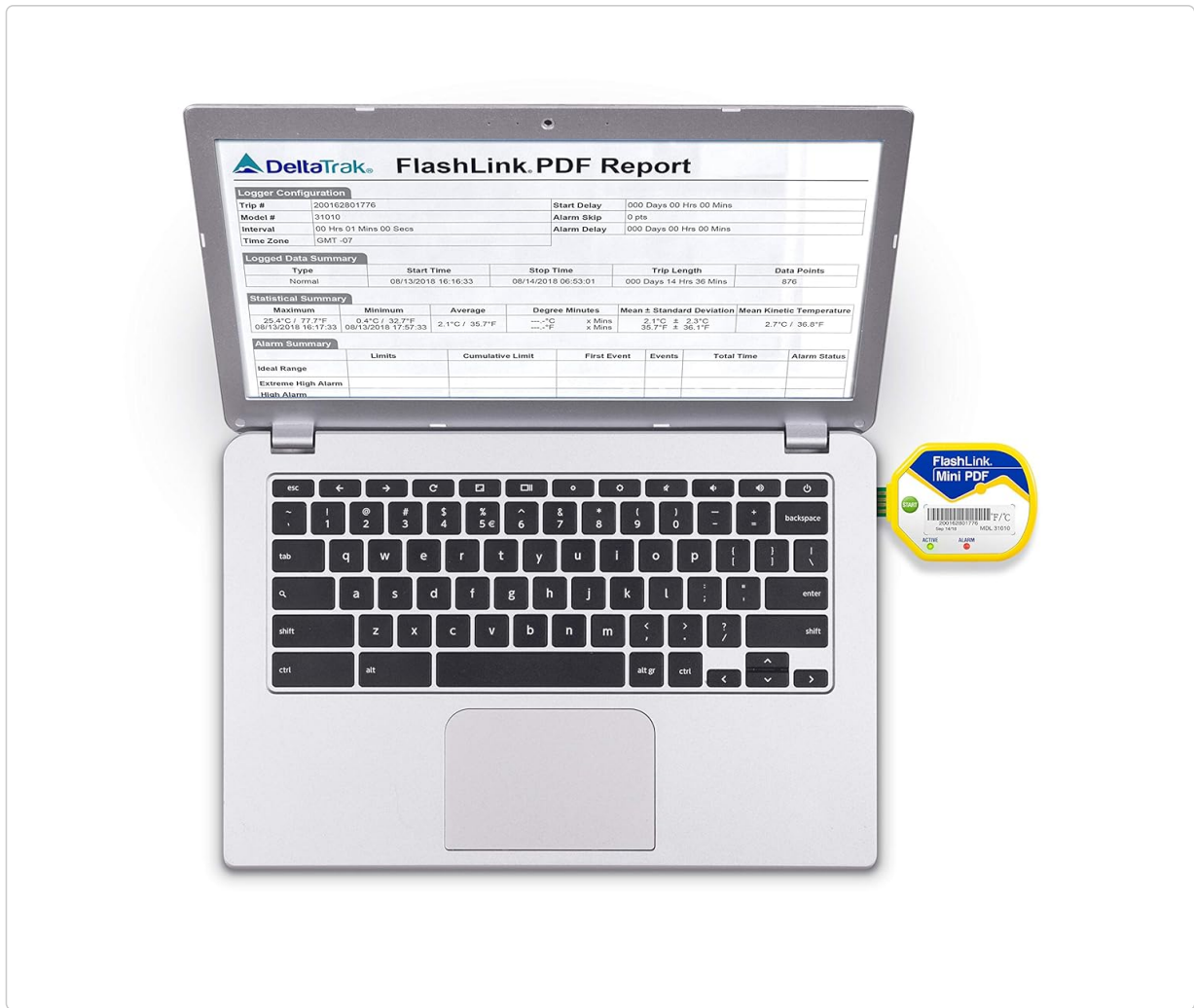


Figure 5: Example of a FlashLink PDF Report displayed on a laptop. The report provides a statistical summary, alarm information, and a graphical representation of temperature data over time.



DeltaTrak FlashLink.PDF Report

Logger Configuration

Trip #	2	Start Delay	000 Days 00 Hrs 00 Mins
Model #	31010	Alarm Skip	0 pts
Interval	00 Hrs 01 Mins 00 Secs	Alarm Delay	000 Days 00 Hrs 00 Mins
Time Zone	GMT-07		

Logged Data Summary

Type	Start Time	Stop Time	Trip Length	Data Points
Normal	08/13/2018 18:18:33	08/14/2018 06:53:01	000 Days 14 Hrs 36 Mins	876

Statistical Summary

Maximum	Minimum	Average	Degree Minutes	Mean ± Standard Deviation	Mean Kinetic Temperature
25.4°C / 77.7°F 08/13/2018 18:17:33	0.4°C / 32.7°F 08/13/2018 17:57:33	2.1°C / 35.7°F	---°C x Mins ---°F x Mins	2.1°C ± 2.3°C 35.7°F ± 38.1°F	2.7°C / 36.8°F

Alarm Summary

	Limits	Cumulative Limit	First Event	Events	Total Time	Alarm Status
Ideal Range						
Extreme High Alarm						
High Alarm						
Low Alarm						
Extreme Low Alarm						

Notes

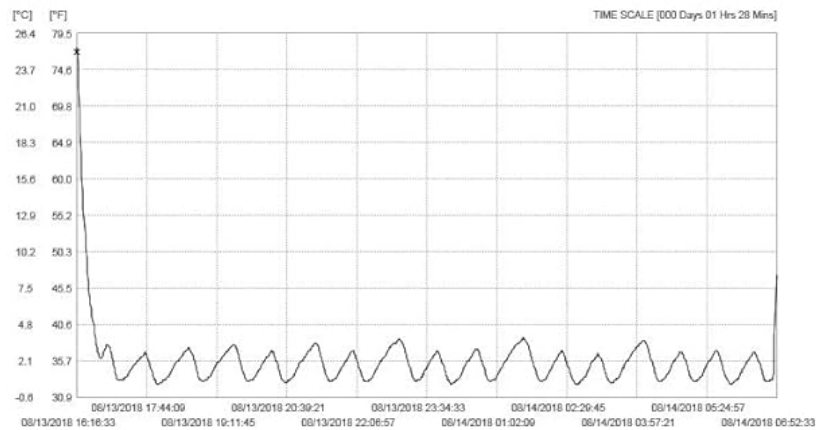


Figure 6: Example of a FlashLink PDF Report displayed on a tablet. The report is easily accessible on various devices, ensuring flexibility in data review.

5.3 Shadow Log Feature

The Shadow Log feature provides an additional layer of data security by guaranteeing trip data, even if the logger is not properly stopped or if an unexpected event occurs. This ensures that critical temperature records are preserved.

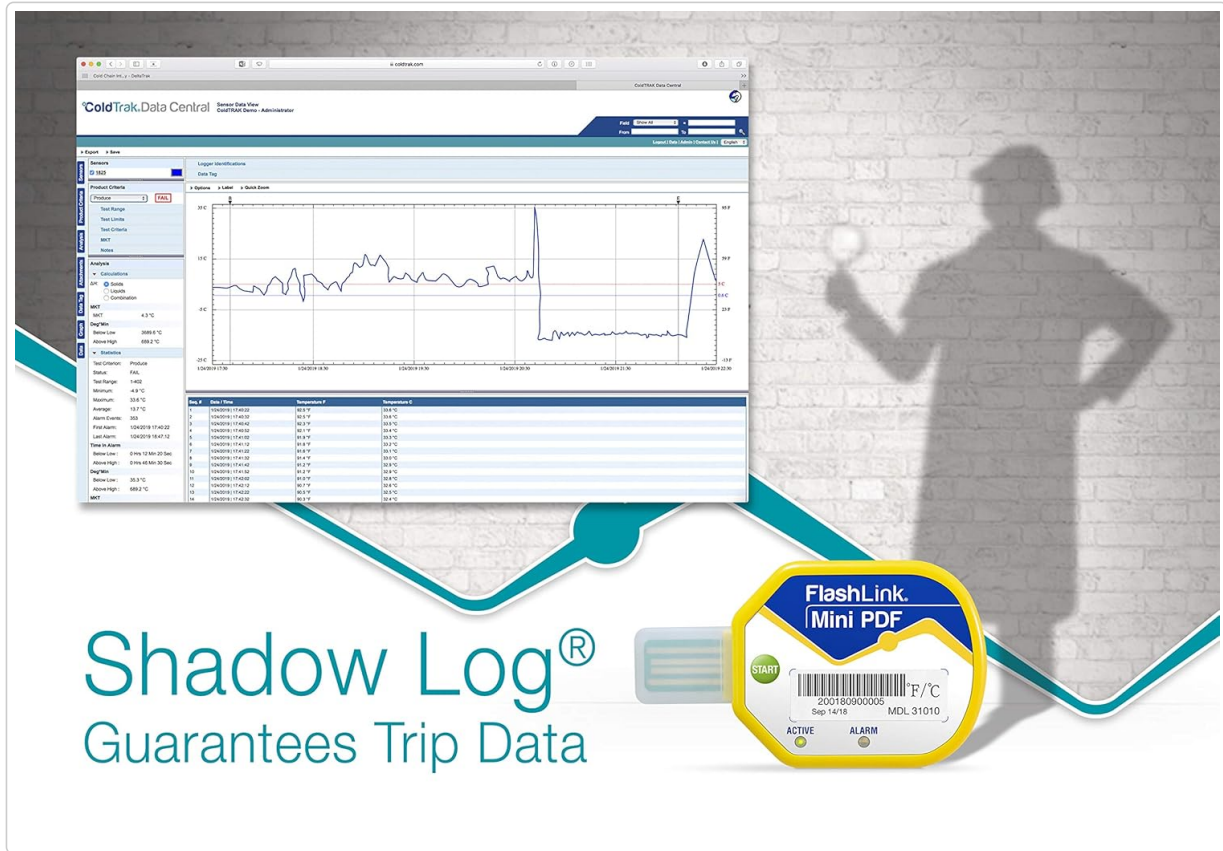


Figure 7: Illustration highlighting the Shadow Log feature. This functionality ensures the integrity and availability of recorded temperature data throughout the entire monitoring period.

6. MAINTENANCE

The FlashLink Mini PDF Logger is a single-use device and requires minimal maintenance. To ensure proper function and longevity before use, keep the device clean by wiping it with a dry, soft cloth. Always ensure the protective cap is securely in place over the USB connector when the logger is not connected to a USB port to prevent dust or damage.

7. TROUBLESHOOTING

- **Logger not starting:** Ensure the START button is pressed and held firmly until the green ACTIVE LED begins to flash. If the logger still does not activate, the internal battery may be depleted, or the unit may be faulty.
- **No data when connected to PC:** Verify that the logger is fully and correctly inserted into the USB port. Try connecting to a different USB port or another computer. If the green ACTIVE LED was not flashing during the trip, the logger may not have started recording or may have stopped prematurely.
- **Alarm LED flashing:** A flashing red ALARM LED indicates that the temperature recorded during the trip has exceeded or fallen below the pre-configured high or low temperature thresholds. Refer to the

generated PDF report for detailed information on specific alarm events and their duration.

8. SPECIFICATIONS

Feature	Specification
Model Name	31010+00-8
Product Dimensions	Approx. 2 x 2 x 0.2 inches (50.8 x 50.8 x 5.08 mm)
Weight	Individual logger weight is minimal; 15.2 ounces refers to a 10-pack.
Battery	1 Lithium Metal battery (included, non-replaceable)
Display Type	Digital (via LED indicators)
Connectivity	USB 2.0
Power Source	Internal Battery Powered
Response Time	500 Milliseconds
Max Trip Duration	Up to 85 days
Report Format	Automatic PDF and CSV

9. WARRANTY AND SUPPORT

For detailed warranty information, technical assistance, or customer support regarding your DeltaTrak FlashLink Mini PDF Logger, please refer to the official DeltaTrak website or contact their customer service department directly. As a product from a small business brand, support is typically provided directly by the manufacturer.

Official Product Page: www.deltatrak.com/fl-mini-pdf