

TOPVISION SD01

TOPVISION SD01 Detachable Stereo Soundbar User Manual

Model: SD01

1. INTRODUCTION

This manual provides detailed instructions for the setup, operation, and maintenance of your TOPVISION SD01 Detachable Stereo Soundbar. Please read this manual thoroughly before using the product to ensure proper functionality and to maximize your audio experience. Keep this manual for future reference.



Image 1.1: TOPVISION SD01 Detachable Stereo Soundbar with included remote control.

2. PACKAGE CONTENTS

Please verify that all items listed below are included in your package:

- 1x Sound Bar (detachable into two tower speakers)
- 1x Optical Cable
- 1x 3.5mm to RCA Cable
- 1x 3.5mm Audio Cable
- 1x Power Adapter
- 1x 10cm Audio Line (for connecting detached speakers)
- 1x 2m Audio Line (for connecting detached speakers)
- 1x Wall Mount Screws (set)
- 1x Wall Mount Template
- 1x Remote Control



Image 2.1: All components included in the TOPVISION SD01 Soundbar package.

3. PRODUCT OVERVIEW

The TOPVISION SD01 is a versatile 60-watt, 39-inch stereo soundbar designed to enhance your audio experience. It features an integrated subwoofer for strong bass and offers both wired and wireless connectivity options, including Bluetooth 5.0. Its unique detachable design allows for flexible placement as a single

soundbar or two tower speakers.

3.1 Key Features

- **Detachable Design:** Can be used as a single soundbar or two vertical tower speakers.
- **High-Quality Audio:** 60 Watts output with an internal subwoofer for enhanced bass.
- **Multiple Connectivity Options:** Bluetooth 5.0, AUX, Optical, Coaxial, USB, TF Card.
- **DSP Technology:** Digital Signal Processing for optimized sound modes (Music, TV, Natural, Jazz, Popular, Classical, Rock).
- **Remote Control:** Full control over modes, volume, playback, and LED display.



Image 3.1: Internal components of the soundbar, highlighting the speakers and bass diaphragms.

DSP Technology

Music

TV

natural jazz popular classical Rock



Image 3.2: Soundbar in use with a TV, demonstrating DSP sound modes.

4. SETUP

4.1 Installation Methods

The TOPVISION SD01 soundbar offers flexible installation options:

- **On a TV Stand:** Place the soundbar horizontally in front of your television.
- **Wall Mount:** Use the included wall mount kit and template to securely attach the soundbar to a wall.
- **Tower Speakers:** Detach the soundbar into two separate vertical speakers and place them on either side of your TV or desired location. Use the provided audio lines to connect the two halves.



Image 4.1: Various installation methods for the soundbar.

DETACHABLE AND COMBINABLE

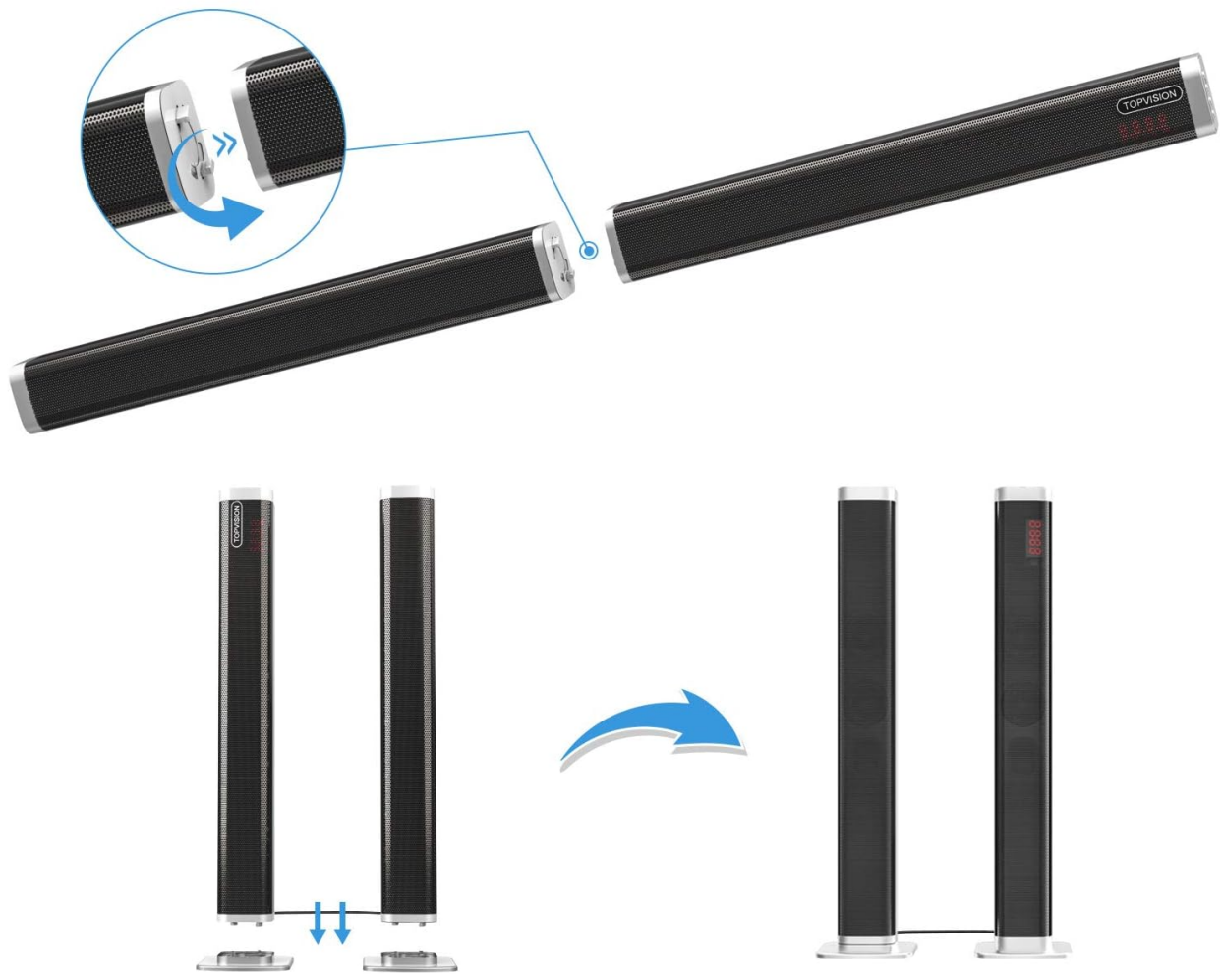


Image 4.2: Illustration of the detachable and combinable design.

4.2 Connecting the Soundbar

The soundbar supports multiple connection types:

- **Bluetooth 5.0:** For wireless connection to compatible devices like smartphones, tablets, and laptops.
- **AUX:** Use the 3.5mm audio cable for a standard wired connection.
- **Optical:** Connect via the optical cable for high-quality digital audio from your TV or other devices.
- **Coaxial:** Use a coaxial cable for digital audio connection.
- **USB/TF Card:** Insert a USB drive or TF card for direct media playback.



Image 4.3: Easy connection options for the soundbar.

4.3 Power Connection

Connect the provided power adapter to the DC 18V input port on the soundbar and then plug it into a power outlet. The soundbar will power on and indicate its status via the LED display.

Your browser does not support the video tag.

Video 4.1: Demonstration of connecting the power adapter and powering on the soundbar, showing the LED display and remote control functionality.

5. OPERATING INSTRUCTIONS

The soundbar can be controlled using the buttons on the unit or the included remote control.

5.1 Power On/Off

- Press the **Power** button on the soundbar or remote control to turn the unit on or off.

5.2 Mode Selection

Press the **M** (Mode) button on the soundbar or the corresponding input button (BT, AUX, OPT, COA, USB) on

the remote to switch between input modes. The current mode will be displayed on the LED screen.

- **Bluetooth (BT):** For wireless audio streaming.
- **AUX:** For analog audio input.
- **Optical (OPT):** For digital optical audio input.
- **Coaxial (COA):** For digital coaxial audio input.
- **USB:** For playing audio files from a USB drive.
- **TF Card:** For playing audio files from a TF card.

5.3 Volume Control

- Press the **Volume Up (+)** or **Volume Down (-)** buttons on the soundbar or remote control to adjust the volume level.
- Press the **Mute** button on the remote to mute or unmute the sound.

5.4 Playback Controls (USB/Bluetooth Mode)

- **Play/Pause:** Press the **Play/Pause** button.
- **Next Track:** Press the **Next Track** button.
- **Previous Track:** Press the **Previous Track** button.
- **Repeat Play (REP):** Available only in USB mode.

5.5 Sound Effects (EQ)

Press the **EQ** button on the remote control to cycle through different sound modes: Music, TV, Natural, Jazz, Popular, Classical, Rock.

5.6 LED Display Control

Press the **LED** button on the remote control to turn the LED display on or off.

Dual Control

Mode transformation



Image 5.1: Soundbar controls and remote control functions.

6. MAINTENANCE

To ensure the longevity and optimal performance of your TOPVISION SD01 Soundbar, follow these maintenance guidelines:

- **Cleaning:** Use a soft, dry cloth to wipe the surface of the soundbar. Do not use liquid cleaners or abrasive materials, as they may damage the finish.
- **Placement:** Avoid placing the soundbar in direct sunlight, near heat sources, or in areas with high humidity. Ensure adequate ventilation around the unit.
- **Handling:** Handle the soundbar with care, especially when detaching or reattaching the speaker sections. Avoid dropping or subjecting it to strong impacts.
- **Power Off:** When not in use for extended periods, it is recommended to power off the soundbar and unplug it from the power outlet.

7. TROUBLESHOOTING

If you encounter any issues with your soundbar, please refer to the following common problems and solutions:

Problem	Possible Cause	Solution
No power	Power adapter not connected or faulty outlet.	Ensure the power adapter is securely plugged into the soundbar and a working power outlet. Try a different outlet.
No sound	Incorrect input mode selected; volume too low; cables not connected properly.	Select the correct input mode (e.g., BT, AUX, OPT). Increase the volume on both the soundbar and the connected device. Check all audio cable connections.
Bluetooth pairing issues	Soundbar not in pairing mode; device too far; interference.	Ensure the soundbar is in Bluetooth mode and discoverable. Move your device closer to the soundbar. Avoid other wireless devices that may cause interference.
Remote control not working	Batteries are dead or incorrectly inserted; obstruction between remote and soundbar.	Replace the batteries in the remote control. Ensure there are no obstacles blocking the remote's signal to the soundbar.
Sound distortion	Volume too high; poor audio source quality; loose connection.	Lower the volume. Try a different audio source. Check all cable connections for looseness.

If the problem persists after trying these solutions, please contact customer support.

8. SPECIFICATIONS

- **Model Name:** SD01
- **Speaker Type:** Soundbar, Subwoofer
- **Compatible Devices:** Laptop, Smartphone, Tablet, Television
- **Surround Sound Channel Configuration:** 2.0
- **Item Weight:** 2.18 Kilograms (4.8 pounds)
- **Is Waterproof:** FALSE
- **Control Method:** Remote
- **Wireless Communication Technology:** Bluetooth 5.0
- **Speaker Size:** 39 Inches
- **Power Source:** Corded Electric
- **Audio Driver Type:** Dynamic Driver
- **Subwoofer Connectivity Technology:** Wireless (refers to internal subwoofer, not external wireless subwoofer)
- **Indoor/Outdoor Usage:** Indoor
- **Product Dimensions:** 19.09 x 2.76 x 4.72 inches (when combined)
- **Speaker Maximum Output Power:** 60 Watts
- **Audio Output Mode:** Stereo
- **Mounting Type:** Bar Mount (for wall mounting)

9. WARRANTY AND SUPPORT

Register your TOPVISION SD01 Soundbar after receiving it to receive an extended 24-month service period. If you encounter any problems with your soundbar, we offer a replacement or refund. For any questions or assistance, please feel free to contact our customer support team.

Warranty Type: Extended