



[Manuals.plus](#) /

› [ONKRON](#) /

› ONKRON TS1881 Mobile TV Stand Instruction Manual

## ONKRON TS1881

# ONKRON TS1881 Mobile TV Stand Instruction Manual

Model: TS1881 | For 50-86 Inch Displays

## 1. INTRODUCTION

---

The ONKRON TS1881 mobile TV stand is designed to securely hold flat-panel displays ranging from 50 to 86 inches, with a maximum weight capacity of 90 kg (198 lbs). It features adjustable height, integrated shelves for AV equipment, and lockable wheels for mobility. This manual provides comprehensive instructions for the safe assembly, operation, and maintenance of your ONKRON TS1881 mobile TV stand.



Figure 1: ONKRON TS1881 Mobile TV Stand in use.

## 2. SAFETY INFORMATION

Please read all instructions carefully before assembly and use. Failure to follow these instructions may result in serious personal injury or damage to property. If you have any questions, please contact ONKRON customer support.

- **Weight Capacity:** Do not exceed the maximum weight capacity of 90 kg (198 lbs) for the TV mount and 5 kg (11 lbs) per shelf. Overloading can cause instability and potential injury.
- **Screen Size:** This stand is designed for displays between 50 and 86 inches. Ensure your TV falls within this range.
- **VESA Compatibility:** Verify your TV's VESA mounting pattern is compatible with the stand's range (200x200mm to 800x500mm).
- **Assembly:** Assemble the stand on a soft, clean surface to prevent scratches. Ensure all fasteners are securely tightened before use. Do not overtighten screws.
- **Stability:** Always ensure the stand is on a stable, level surface. Lock the wheels when the stand is in a stationary position to prevent accidental movement.

- **Cable Management:** Utilize the integrated cable management channels to prevent tripping hazards and protect cables from damage.
- **Children:** Keep children away from the stand during assembly. Do not allow children to climb on or play with the stand or mounted TV.

### 3. PACKAGE CONTENTS

Before beginning assembly, check that all parts are present and undamaged. If any parts are missing or damaged, do not attempt to assemble the stand. Contact ONKRON customer support for assistance.

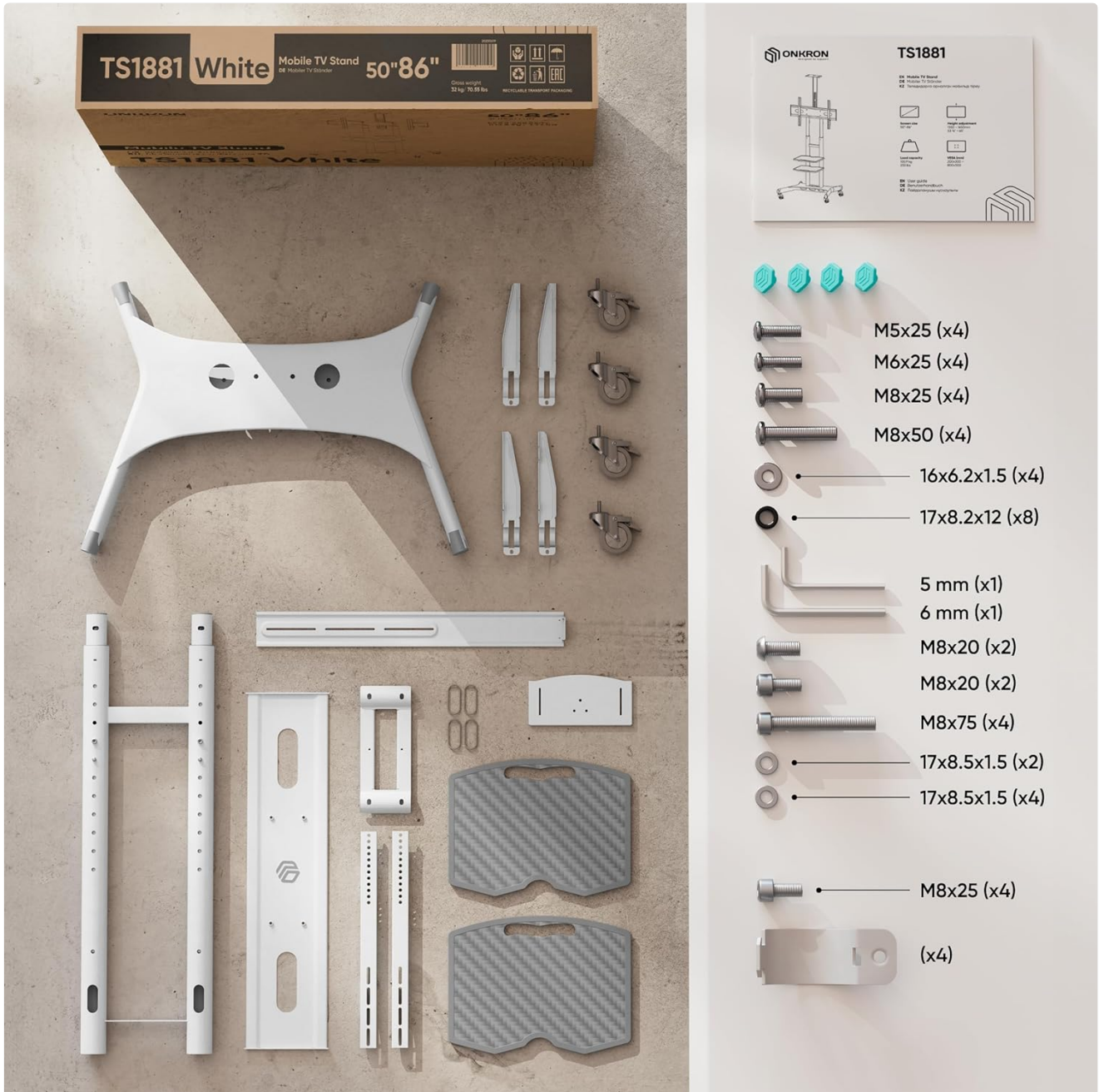


Figure 2: All components included in the package.

The package typically includes:

- Base with wheels
- Vertical columns (2 sections)
- TV mounting plate
- TV mounting brackets (2 pieces)

- AV shelves (2 pieces)
- Camera shelf
- Hardware kit (various screws, washers, spacers, Allen keys)
- Instruction manual

## 4. SETUP AND ASSEMBLY INSTRUCTIONS

Follow these steps carefully to assemble your ONKRON TS1881 mobile TV stand. It is recommended to have two people for assembly, especially when mounting the TV.

1. **Assemble the Base:** Attach the vertical columns to the base using the provided screws. Ensure they are securely fastened.
2. **Install Wheels:** Insert the lockable wheels into the designated slots on the base. Ensure they are firmly in place.
3. **Attach TV Mounting Plate:** Secure the TV mounting plate to the top section of the vertical columns.
4. **Install TV Brackets:** Attach the TV mounting brackets to the back of your television using the appropriate screws and spacers from the hardware kit. Ensure the brackets are level and centered.
5. **Mount TV:** With assistance, carefully lift the TV and hook the mounting brackets onto the TV mounting plate on the stand. Secure the TV to the stand using the safety screws or locking mechanisms.
6. **Install Shelves:** Attach the AV shelves to the vertical columns at your desired height. The shelves are designed to hold up to 5 kg each. The top shelf is suitable for a webcam or small camera.
7. **Cable Management:** Route all cables through the integrated cable management channels in the vertical columns to maintain a tidy and safe setup.



Figure 3: Stand features including adjustable height and cable management.

## 5. OPERATING INSTRUCTIONS

The ONKRON TS1881 offers flexibility in positioning and display adjustment.

- **Adjusting TV Height:** The TV height can be adjusted from 1350 mm to 1650 mm (from the floor to the center of the TV). Loosen the height adjustment screws on the vertical columns, raise or lower the TV to the desired position, and then securely tighten the screws.
- **Moving the Stand:** To move the stand, unlock all four wheels. Carefully push the stand to its new location. Once positioned, lock all four wheels to ensure stability.

- **Using the Shelves:** The two AV shelves can be adjusted in height along the vertical columns. Place your media devices, laptops, or other accessories on the shelves, ensuring not to exceed the 5 kg weight limit per shelf. The top camera shelf is fixed and designed for webcams or small cameras.
- **Optional Tilt Function:** An optional tilt adapter (model ATL-1881, sold separately) allows you to tilt the TV from 0 to 10 degrees for optimal viewing angles.
- **Optional Reinforced Wheels:** For enhanced mobility and stability on various surfaces, consider purchasing the ONKRON AWL-75 universal reinforced wheel kit (sold separately).

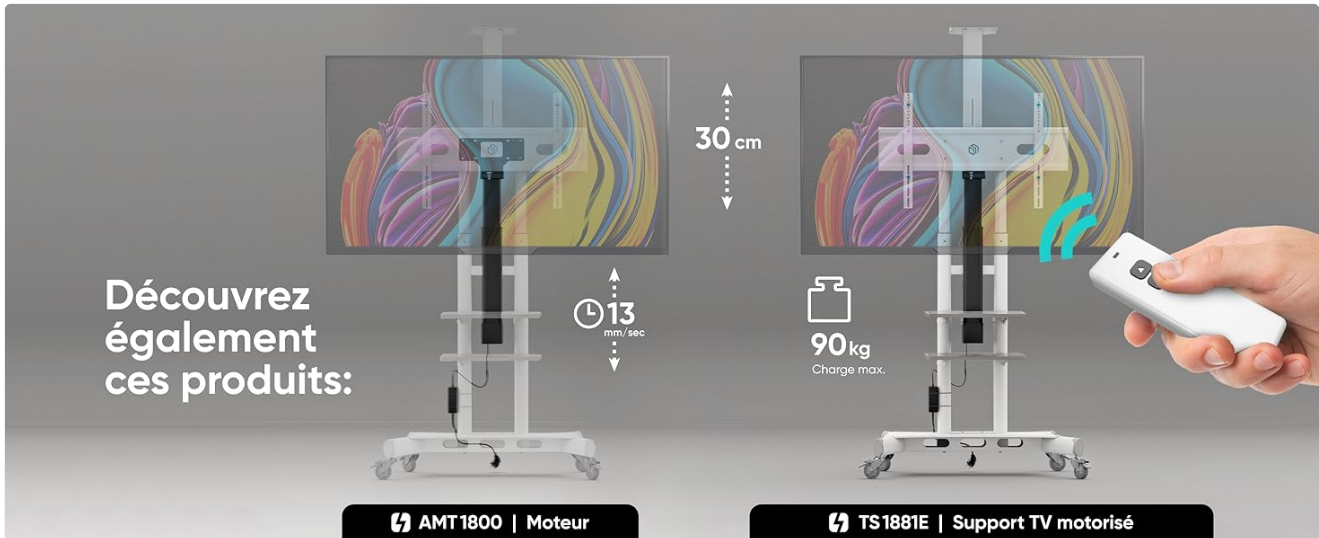


Figure 4: Easy mobility and cable management.

Your browser does not support the video tag.

Video 1: Overview of ONKRON TS1881 features, including VESA compatibility, weight capacity, shelves, height adjustment, and optional accessories.

## 6. MAINTENANCE

Regular maintenance ensures the longevity and safe operation of your TV stand.

- **Cleaning:** Wipe the stand with a soft, damp cloth. Avoid using abrasive cleaners or solvents that could damage the finish.
- **Fastener Check:** Periodically check all screws and bolts to ensure they remain tight. Retighten if necessary, but do not overtighten.
- **Wheel Inspection:** Inspect the wheels for any debris or damage that might hinder smooth movement. Clean or replace as needed.

## 7. TROUBLESHOOTING

If you encounter any issues with your ONKRON TS1881 mobile TV stand, refer to the following common solutions:

- **Stand is unstable:** Ensure all assembly screws are tightened. Verify the stand is on a level surface. Do not exceed the maximum weight capacity.
- **Difficulty moving the stand:** Check that all wheels are unlocked. Inspect wheels for obstructions or damage. Ensure the floor surface is suitable for rolling.
- **TV is not level:** Recheck the installation of the TV mounting brackets on the TV and the mounting plate on the stand. Adjust as necessary.
- **Shelves are loose:** Ensure the shelf attachment screws are securely tightened.

If the problem persists, please contact ONKRON customer support.

## 8. SPECIFICATIONS

---

Feature	Specification
Model	TS1881
Compatible Screen Size	50 - 86 inches
Maximum TV Weight	90 kg (198 lbs)
VESA Compatibility	200x200mm to 800x500mm
Height Adjustment Range	1350 mm - 1650 mm
Material	Steel and Plastic
Color	White
Maximum Shelf Load	5 kg (11 lbs) per shelf
Maximum Tilt Angle (with optional adapter)	10 degrees
Product Weight	31.5 kg (69.4 lbs)

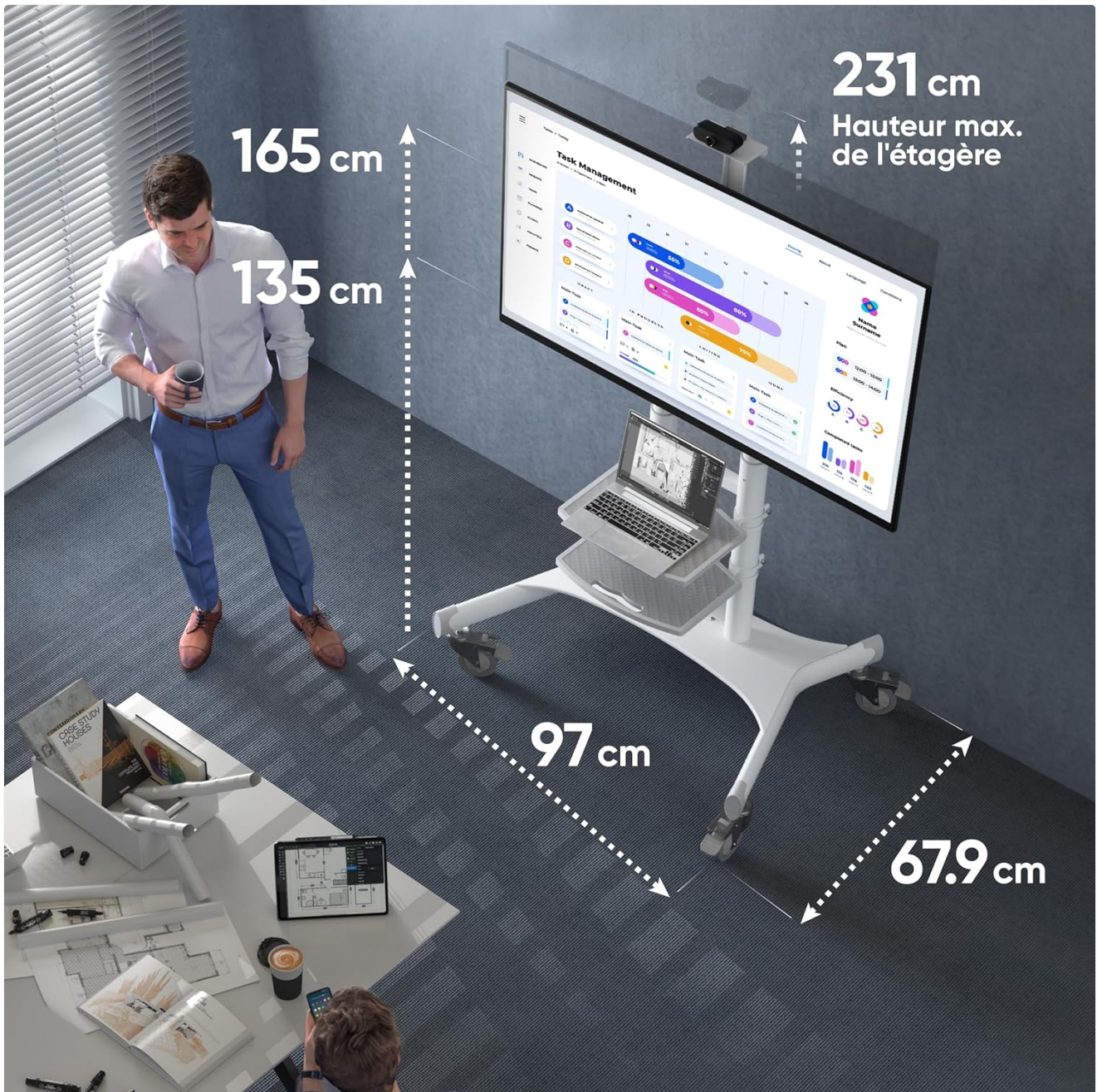


Figure 5: Key dimensions of the ONKRON TS1881 Mobile TV Stand.

## 9. WARRANTY AND SUPPORT

ONKRON provides a 5-year availability of spare parts in the EU for the TS1881 mobile TV stand.

For any questions, technical assistance, or warranty claims, please contact ONKRON customer support. Our specialists are available to provide support and address any concerns you may have regarding your product.

Please refer to the ONKRON official website or your purchase documentation for specific contact details and the full warranty policy.