



Manuals.plus /

› G-MARK /

› G-MARK Wireless Microphone System, Professional UHF Dual Channel Handheld Cordless Dynamic Mic Set for Home Karaoke, Church, DJ, Wedding, Meeting, Events, 200ft Range

G-MARK G320AM

G-MARK G320AM Wireless Microphone System User Manual

Model: G320AM | Brand: G-MARK

INTRODUCTION

The G-MARK G320AM Wireless Microphone System is a professional UHF dual-channel handheld cordless dynamic microphone set designed for various applications including home karaoke, church events, DJ performances, weddings, meetings, and other events. It offers a reliable 200ft to 250ft operating range and features frequency adjustability and anti-interference capabilities for clear audio transmission.

PACKAGE CONTENTS

Please ensure all items listed below are included in your package:

- 1 x Wireless Receiver
- 2 x UHF Wireless Handheld Microphones
- 1 x 1/4" Audio Cable
- 1 x Power Adapter
- 2 x Antennas
- 2 x Roll Rings (Anti-roll protection for microphones)
- 1 x User Manual

PACKAGE LIST



Image: All components included in the G-MARK G320AM Wireless Microphone System package.

SETUP GUIDE

1. Connecting the Receiver

Connect the provided power adapter to the DC9V-12V power input on the rear of the wireless receiver. Plug the power adapter into a suitable power outlet. Attach the two antennas to the ANT-A and ANT-B ports on the receiver's rear. For audio output, connect the 1/4" audio cable from the "MIX OUT" port on the receiver to the MIC input jack of your amplifier, PA system, or karaoke machine. Ensure it is plugged into the MIC jack, not the AUX jack.

UHF WIRELESS RECEIVER

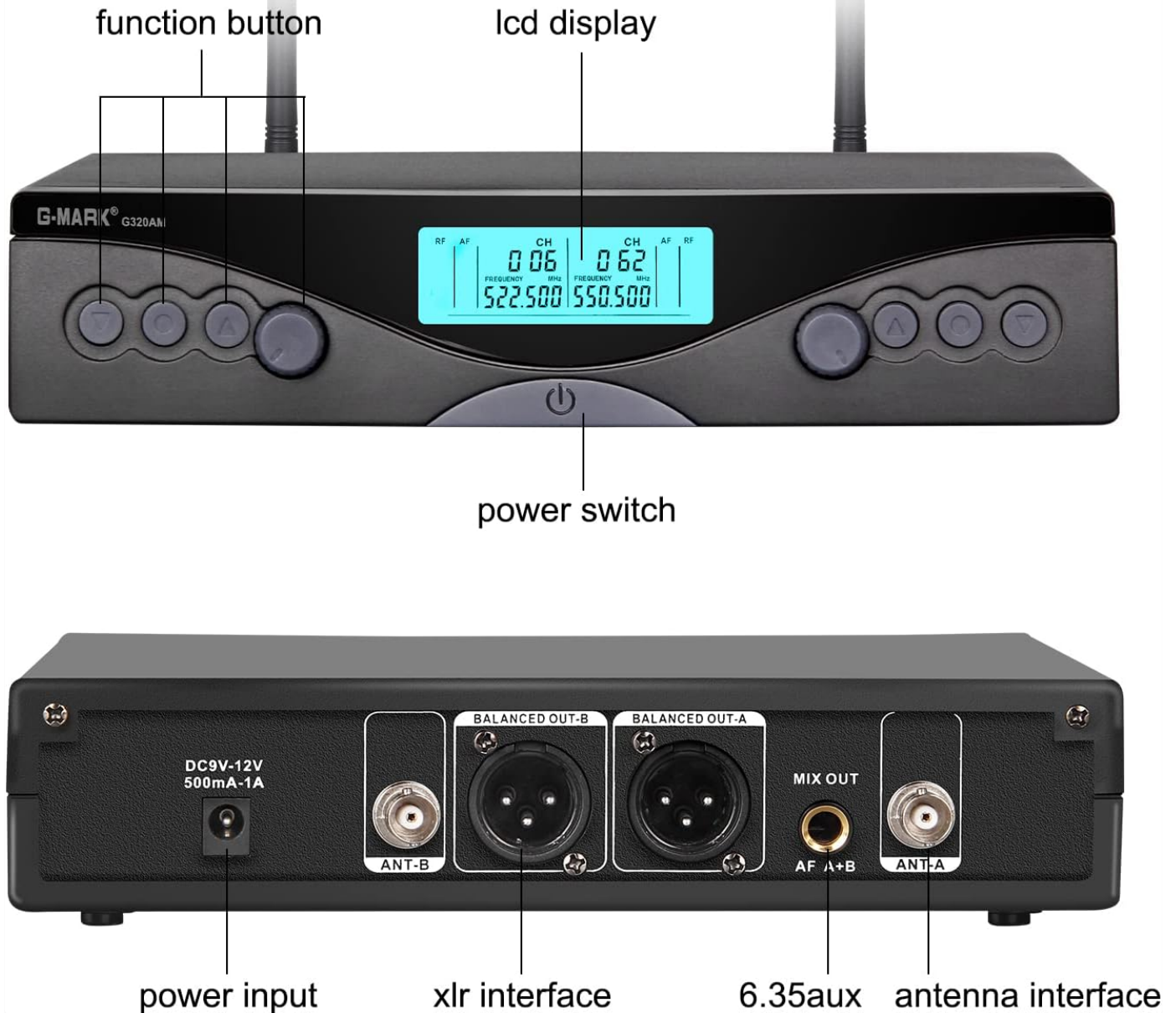


Image: Detailed view of the UHF Wireless Receiver, showing function buttons, LCD display, power switch, power input, XLR interfaces, 6.35mm AUX output, and antenna interfaces.

2. Microphone Battery Installation

Each handheld microphone requires 2 AA batteries (not included). Unscrew the bottom part of the microphone to reveal the battery compartment. Insert the batteries according to the polarity markings (+/-). Securely screw the bottom part back on.

3. Powering On and Automatic Synchronization

Turn on the wireless receiver by pressing its power button. The LCD display will illuminate. Then, turn on each handheld microphone. The receiver will automatically synchronize its frequency with the microphones. This plug-and-play feature simplifies the setup process.

4. Adjusting Frequency and Channel Locking

The system features frequency adjustable UHF technology. To adjust the frequency or lock the channel, refer to the following steps:

Your browser does not support the video tag.

Video: A user guide demonstrating how to adjust the frequency and pair the G-MARK G320AM wireless microphone system.

1. On the receiver, use the channel adjustment buttons (up/down) to select a desired channel.
2. Press the "SET" button on the receiver to initiate pairing mode.
3. Align the infrared sensor on the microphone (usually near the power button) with the infrared location on the receiver (indicated by a red dot or sensor).
4. The microphone and receiver will pair, and the channel will be locked, indicated by a "Locking success" message or similar on the display.

5. Connecting to Speakers/Amplifier

The system is widely compatible with various multimedia devices. After pairing, ensure your amplifier or karaoke speaker is powered on and connected correctly. The receiver's MIX OUT port provides a combined audio signal from both microphones.



HOW TO USE

WIDELY COMPATIBLE WITH MORE MULTIMEDIA DEVICES



USE THE INCLUDED UL LISTED PLUG TO CONNECT THE POWER SUPPLY AND RECEIVER

TURN ON THE WIRELESS MICROPHONE AND WAIT FOR THE AUTOMATIC CONNECTION

USE XLR CABLES OR 6.35MM CABLES TO CONNECT SPEAKERS

Image: Diagram showing how to connect the receiver to an amplifier or karaoke speaker. Note: Not compatible with PC/iPad/Notebook directly.

OPERATING INSTRUCTIONS

Microphone Volume Control

Each dynamic microphone features its own independent volume control on the receiver. This allows you to balance the vocal levels as desired for optimal sound. Adjust the volume knobs for Mic A and Mic B separately on the receiver's front panel.

INDEPENDENT VOLUME CONTROL

SEPARATE VOLUME KNOB FOR MIC A AND MIC B



Image: Close-up of the independent volume control knobs for Microphone A and Microphone B on the receiver.

Operating Range and Anti-Interference

The system offers a long operating range of 200 feet to 250 feet (up to 330ft max operating range in ideal conditions). The auto-scan function helps search for the least interference channel to pair with transmitters, ensuring stable signal transmission. The dual antenna design further increases anti-interference ability for each channel.

UHF WIRELESS RANGE

330ft max operating range



Image: Illustration of the UHF wireless range, indicating a maximum operating range of 330ft.

Suitable Occasions

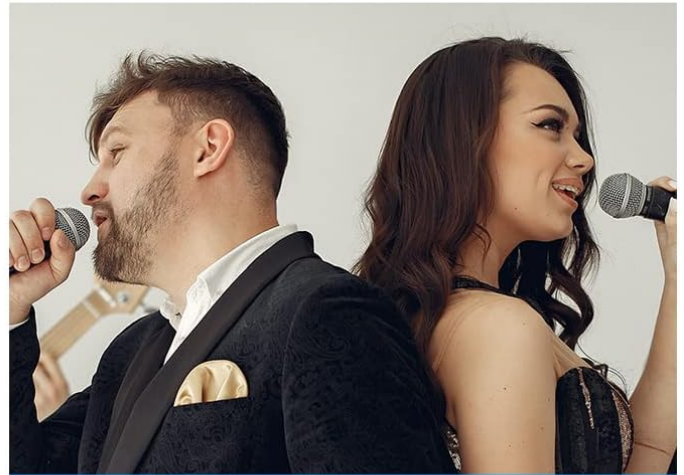
This wireless microphone system is versatile and suitable for various occasions, including:

- Party Gatherings
- Karaoke Sessions
- Practice Singing
- Church Services
- DJ Events
- Weddings
- Meetings
- Speeches

SUITABLE FOR VARIOUS OCCASIONS



PARTY GATHERING



KARAOKE



PRACTICE SINGING



LISTEN TO MUSIC

Image: Visual examples of various occasions where the microphone system can be used, such as parties, karaoke, and singing practice.

MAINTENANCE

To ensure the longevity and optimal performance of your G-MARK Wireless Microphone System, follow these maintenance guidelines:

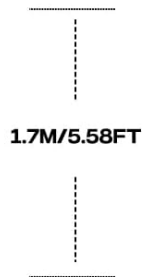
- **Cleaning:** Use a soft, dry cloth to clean the receiver and microphones. Avoid using abrasive cleaners or solvents.
- **Battery Care:** Remove batteries from the microphones if they will not be used for an extended period to prevent leakage and damage.
- **Storage:** Store the system in a cool, dry place away from direct sunlight and extreme temperatures.
- **Handling:** Handle microphones with care. The product has excellent shatter and shock resistance, but excessive force or drops can still cause damage.



STRICT HIGH AND LOW TEMPERATURE TEST



EXCELLENT SHATTER & SHOCK RESISTANCE



 **> 1000**
click test

Image: Illustration showing the microphone undergoing strict high and low temperature tests, and demonstrating excellent shatter and shock resistance with a "drop test" graphic.

TROUBLESHOOTING

No Sound Output:

- Ensure the receiver is powered on and its display is active.
- Check if the microphones are powered on and successfully paired with the receiver (verify channel lock).
- Confirm that the audio cable is securely connected from the receiver's "MIX OUT" to the correct "MIC" input on your amplifier/speaker.
- Adjust the volume controls on both the receiver and your audio device.
- Check microphone batteries and replace if low.

Interference or Signal Dropouts:

- Ensure antennas are properly connected and extended.
- Use the frequency adjustment feature to select a different channel with less interference (refer to Setup Guide).
- Reduce the distance between the microphones and the receiver.

- Avoid placing the receiver near other electronic devices that may cause interference.

SPECIFICATIONS

Feature	Detail
Brand	G-MARK
Model Name	G320AM
Microphone Form Factor	Handheld
Connectivity Technology	Wireless (UHF)
Frequency Range	520 MHz - 580 MHz
Number of Channels	2
Audio Sensitivity	80 dB
Signal-to-Noise Ratio	60 dB
Power Source	Corded Electric (Receiver)
Batteries Required	2 AA batteries (per microphone, not included)
Material	Plastic
Product Dimensions (L x W x H)	16.54 x 12.99 x 2.76 inches
Item Weight	3.08 pounds (1.4 Kilograms)

WARRANTY AND SUPPORT

G-MARK products typically come with a standard manufacturer's warranty. Please refer to the warranty card included in your package for specific terms and conditions. For technical support, troubleshooting assistance, or warranty claims, please contact G-MARK customer service through their official website or the retailer where you purchased the product.

You can visit the G-MARK Store on Amazon for more information and support resources.