

## Dorman 921-051

# Dorman 921-051 Engine Oil Dipstick User Manual

Model: 921-051 | Brand: Dorman

## INTRODUCTION

This manual provides instructions for the proper installation, usage, and maintenance of the Dorman 921-051 Engine Oil Dipstick. This product is designed as a direct replacement for original equipment dipsticks in specific Ford vehicle applications, ensuring accurate engine oil level measurement.

## PRODUCT COMPATIBILITY

The Dorman 921-051 Engine Oil Dipstick is compatible with the following Ford models. It is crucial to verify fitment for your specific vehicle's make, model, and trim level before installation.

- **Ford F-250 Super Duty:** 2008, 2009, 2010
- **Ford F-350 Super Duty:** 2008, 2009, 2010
- **Ford F-450 Super Duty:** 2008, 2009, 2010, 2011, 2012, 2013, 2014, 2015, 2016, 2017, 2018
- **Ford F-550 Super Duty:** 2007, 2008, 2009, 2010, 2011, 2012, 2013, 2014, 2015, 2016, 2017, 2018

***Important:** Always confirm compatibility using your vehicle's specific information to ensure correct part selection. Incorrect fitment can lead to inaccurate oil level readings.*

## WHAT'S IN THE BOX

Upon unpacking, ensure all components are present and undamaged.

- 1x Dorman 921-051 Engine Oil Dipstick

## SETUP AND INSTALLATION

Follow these steps for proper installation of your new engine oil dipstick. Ensure the engine is cool before beginning any work.

1. **Locate Existing Dipstick:** Identify the current engine oil dipstick in your vehicle. It typically has a

brightly colored handle (often yellow or orange).

2. **Remove Old Dipstick:** Carefully pull the old dipstick straight out of its tube.
3. **Inspect Dipstick Tube:** Visually inspect the dipstick tube for any obstructions or damage. Ensure it is clean.
4. **Insert New Dipstick:** Gently insert the Dorman 921-051 Engine Oil Dipstick into the dipstick tube. Push it down until the handle is fully seated. Do not force it.
5. **Verify Seating:** Ensure the dipstick handle is flush with the top of the dipstick tube, indicating it is fully seated and sealed.



Figure 1: The Dorman 921-051 Engine Oil Dipstick. This image shows the overall length and design of the dipstick, including the yellow handle and the metal shaft.



Figure 2: Close-up view of the yellow handle of the Dorman 921-051 Engine Oil Dipstick. The handle is designed for easy grip and removal.

## OPERATING INSTRUCTIONS (CHECKING ENGINE OIL LEVEL)

---

Regularly checking your engine oil level is vital for vehicle maintenance. Follow these steps for an accurate reading:

1. **Park on Level Ground:** Ensure your vehicle is parked on a flat, level surface to get an accurate oil level reading.
2. **Engine Temperature:** For most accurate readings, check the oil when the engine is warm but has been turned off for at least 5-10 minutes. This allows oil to drain back into the oil pan. Consult your vehicle's owner's manual for specific recommendations.
3. **Remove Dipstick:** Pull the dipstick out completely.
4. **Wipe Clean:** Use a clean cloth or paper towel to wipe all oil from the dipstick.
5. **Reinsert Dipstick:** Fully reinsert the clean dipstick into its tube until it is completely seated.
6. **Remove and Read:** Pull the dipstick out again and observe the oil level. The oil film should be between the "ADD" (or "LOW") and "FULL" (or "MAX") marks on the dipstick.
7. **Add Oil if Necessary:** If the oil level is below the "ADD" mark, add the recommended type and amount of engine oil as specified in your vehicle's owner's manual. Add oil gradually and recheck the level.
8. **Reinsert Dipstick:** Once the oil level is correct, fully reinsert the dipstick.



Figure 3: Close-up of the measurement end of the Dorman 921-051 Engine Oil Dipstick, showing the markings for minimum and maximum oil levels. The twisted metal design is visible.

## MAINTENANCE

The Dorman 921-051 Engine Oil Dipstick requires minimal maintenance:

- **Cleaning:** Periodically wipe the dipstick clean with a cloth to remove any accumulated grime or debris.
- **Inspection:** Inspect the dipstick for any signs of bending, corrosion, or damage to the handle or sealing O-ring. A damaged dipstick should be replaced to ensure accurate readings and prevent oil leaks.
- **Proper Seating:** Always ensure the dipstick is fully seated in its tube after checking the oil level to prevent dirt and moisture from entering the engine and to avoid oil leaks.

## TROUBLESHOOTING

If you encounter issues with your Dorman 921-051 Engine Oil Dipstick, consider the following:

- **Inaccurate Readings:**
  - Ensure the vehicle is on level ground.
  - Allow sufficient time for oil to drain back into the pan after the engine has been running.
  - Verify the dipstick is fully inserted and seated before taking a reading.
  - Confirm the dipstick is the correct part for your specific vehicle model and engine. Refer to the "Product Compatibility" section.
- **Difficulty Inserting/Removing:**
  - Check the dipstick tube for any obstructions or damage.
  - Ensure the dipstick is aligned correctly with the tube opening.
  - Do not force the dipstick; if it does not slide in smoothly, re-examine the tube and dipstick for issues.
- **Oil Leakage Around Dipstick:**
  - Ensure the dipstick is fully seated.
  - Inspect the O-ring on the dipstick handle for damage or wear. A worn O-ring may require dipstick replacement.

## SPECIFICATIONS

| Attribute                   | Detail                     |
|-----------------------------|----------------------------|
| Model Number                | 921-051                    |
| Brand                       | Dorman                     |
| Material                    | Metal                      |
| Item Dimensions (L x W x H) | 0.39 x 2.95 x 48.81 inches |
| Item Weight                 | 1.58 ounces                |
| OEM Part Number             | 7C3Z6750A                  |

UPC

885484769939





## WARRANTY AND SUPPORT

For warranty information or technical support regarding your Dorman 921-051 Engine Oil Dipstick, please refer to the official Dorman website or contact Dorman customer service directly. Keep your purchase receipt for warranty claims.

**Dorman Customer Service:** [Visit DormanProducts.com/contact](https://www.dormanproducts.com/contact)

© 2023 Dorman Products. All rights reserved.

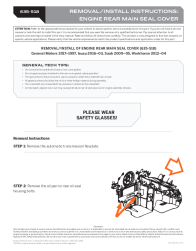
## Related Documents - 921-051

|   |  |
|---|--|
|   | <p><a href="#">Dorman 919-168 Brake Line Installation Guide for Ford F-150</a></p> <p>Detailed installation instructions and technical notes for Dorman 919-168 stainless steel brake line kit, compatible with select Ford F-150 and Ford Lobo models (2003-2004). Includes guidance on handling shipping bends and proper installation procedures.</p>               |
|  | <p><a href="#">Dorman 740-674 Window Regulator Installation and Removal Instructions for Ford F-Series Pickup &amp; Bronco (1980-96)</a></p> <p>Step-by-step guide for installing and removing the Dorman 740-674 window regulator for Ford F-Series Pickup and Bronco models from 1980 to 1996. Includes tools required, general tips, and detailed instructions.</p> |
|  | <p><a href="#">Dorman 926-959 Oil Filter Housing Kit Installation Instructions</a></p> <p>Comprehensive installation guide for the Dorman 926-959 Upgraded Aluminum Engine Oil Filter Housing Kit. Includes compatibility information, safety precautions, step-by-step instructions, and technical support contact details.</p>                                       |
|  | <p><a href="#">Dorman 917-327 Transmission Dipstick Tool: Installation Guide &amp; Vehicle Compatibility</a></p> <p>Comprehensive guide for the Dorman 917-327 Transmission Dipstick Tool, covering installation steps, usage, and detailed vehicle compatibility for Dodge, Chrysler, Jeep, and Volkswagen models with various transmission types.</p>                |



[Dorman Automotive Hardware Catalog: Comprehensive Fasteners and Components](#)

Explore the Dorman Automotive Hardware Catalog, featuring a wide range of fasteners, nuts, bolts, springs, and specialized tech trays for automotive repair and maintenance. Find part numbers and applications for efficient inventory and service.



[Dorman 635-518 Engine Rear Main Seal Cover Removal and Installation Guide](#)

Comprehensive removal and installation instructions for the Dorman 635-518 Engine Rear Main Seal Cover. This guide provides step-by-step procedures, technical tips, and compatibility information for General Motors, Isuzu, Saab, and Workhorse vehicles.