



[Manuals.plus](#) /

> [HOUHUI](#) /

> HOUHUI 9.84ft Motion Activated LED Strip Lights User Manual

## HOUHUI B07S9BC616

# HOUHUI 9.84ft Motion Activated LED Strip Lights User Manual

Model: B07S9BC616

## INTRODUCTION

---

This user manual provides comprehensive instructions for the installation, operation, and maintenance of your HOUHUI 9.84ft Motion Activated LED Strip Lights. Please read this manual thoroughly before use to ensure proper functionality and safety.

## PRODUCT OVERVIEW

---

### Components Included:

- 1 x 9.84ft/3m Warm White USB LED Strip Light with Motion Sensor
- 1 x 5V USB Adapter
- 1x User Manual

### Key Features:

- **Motion Activated Lighting:** Integrated motion sensor activates lights when movement is detected.
- **Adjustable Timer:** Customize light duration from 38 to 300 seconds.
- **USB Powered:** Safe and convenient 5V USB power supply.
- **Easy Installation:** Self-adhesive backing for quick and secure mounting.
- **Warm White Illumination:** 3000K warm white color temperature for comfortable lighting.
- **Versatile Application:** Ideal for beds, stairs, cabinets, hallways, and more.
- **High-Brightness LEDs:** Utilizes 2835 LED beads for superior illumination (6-7lm/LED).



Image: Overview of the HOUHUI Motion Activated LED Strip Lights, showing the LED strip, USB adapter, and motion sensor.

**USB Powered**



**9.84FT**  
3000-3500K

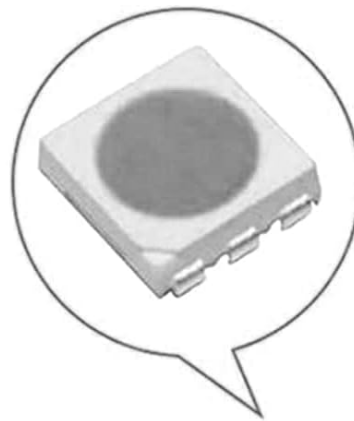


**We use expensive 2835 LEDs (6-7lm/LED) to ensure better lighting**



**6-7lm/LED**  
**2835 LED**

**Ours**



**5-6lm/LED**  
**5050 LED**

**Others**



Image: Illustrates the USB power connection and highlights the use of 2835 LED beads for better lighting compared to 5050 LEDs.

## SETUP AND INSTALLATION

- 1. Prepare the Surface:** Ensure the surface where the LED strip will be installed is clean, dry, and smooth. Dust, dirt, or moisture can affect the adhesive.
- 2. Measure and Plan:** Before peeling the adhesive, unroll the LED strip and plan its placement. The strip is 9.84ft (3m) long.
- 3. Attach the Motion Sensor:** The motion sensor unit should be placed in an area where it can effectively detect motion, typically facing the direction of expected movement. It has a 120° detection angle and a range of up to 5 meters.
- 4. Peel and Stick:** Carefully peel off the protective backing from the adhesive tape on the back of the LED strip. Press the strip firmly onto the desired surface, ensuring good contact along its entire length.
- 5. Connect Power:** Connect the USB cable from the motion sensor unit to the provided 5V USB adapter. Plug the USB adapter into a standard wall outlet.

6. **Test Functionality:** Once installed and powered, test the motion sensor and light activation.



Image: A diagram illustrating the typical installation of the LED strip under a bed, showing the placement of the PIR sensor and the light distribution.

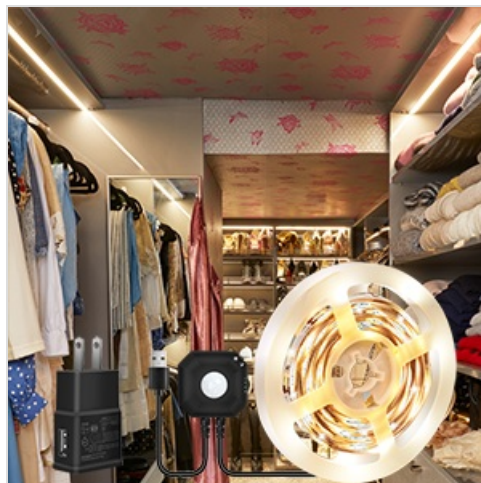


Image: Example of LED strip lights installed inside a closet, providing illumination for clothing.

## OPERATING INSTRUCTIONS

---

The HOUHUI Motion Activated LED Strip Lights offer two primary operating modes and an adjustable timer for motion sensing mode.

### Lighting Modes:

- **Constant Light Mode (24/Sun icon):** In this mode, the LED strip will remain continuously lit as long as it is powered. The motion sensor is inactive in this mode.
- **Motion Sensing Mode (Person/Moon icon):** In this mode, the LED strip will automatically turn on when motion is detected within its sensor range (up to 5 meters, 120° angle). The lights will turn off after a set period of inactivity.

### Adjusting the Timer (Motion Sensing Mode):

The motion sensor unit features a switch to adjust the duration the lights stay on after motion is no longer detected. The available timer settings are:

- **38 seconds**
- **75 seconds**
- **150 seconds**
- **300 seconds**

Select the desired time setting using the switch on the motion sensor unit.

# Timing Adjustable

from 38 to 300 seconds with adjustable timer

## Sensor Range

120° 5M



**38<sub>s</sub>** First gear:  
38 seconds

**75<sub>s</sub>** Second gear:  
75 seconds

**150<sub>s</sub>** Third gear:  
150 seconds

**300<sub>s</sub>** Fourth gear:  
300 seconds



## Constant Light Mode



- It will stay on all days.
- Motion sensor stops working.



## Motion Sensing Mode



- Activated by motion all days.
- Auto off after 38/75/150/300s of inactivity.



Image: Visual representation of the adjustable timer settings (38s, 75s, 150s, 300s) and the two lighting modes: Constant Light Mode and Motion Sensing Mode.

# MOTION ACTIVATED NIGHT LIGHT



## Multi-Application Not just a bed light

lights up when you really need it instead of illuminating the entire room. Warm soft glow of bedlight will light up automatically to guide you safely across the room with no disturbing glare to wake others and no fumbling to find the light switch in the darkness when getting out of bed and your foot touches the floor or come nearby.



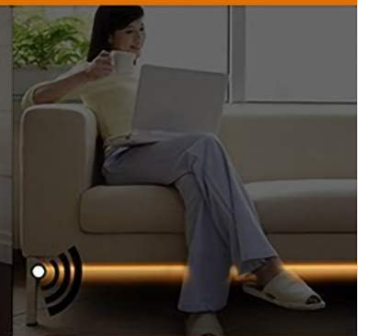
For Children room



For Restroom



For Stairs



For living room

Image: Examples of the motion-activated night light in various settings, including a bedroom, children's room, restroom, stairs, and living room, highlighting its multi-application use.

## MAINTENANCE

- **Cleaning:** To clean the LED strip and motion sensor, gently wipe with a dry, soft cloth. Do not use abrasive cleaners or immerse any part of the product in water.
- **Adhesive Check:** Periodically check the adhesive backing to ensure the strip remains securely attached. If necessary, re-secure with additional adhesive tape (not included).
- **Environment:** This product is designed for indoor use only and is non-waterproof. Avoid exposure to moisture, high humidity, or extreme temperatures.

## TROUBLESHOOTING

Problem	Possible Cause	Solution
---------	----------------	----------

Problem	Possible Cause	Solution
Lights do not turn on.	No power supply. Motion sensor in Constant Light Mode. Sensor obstructed or faulty.	Ensure USB adapter is plugged in and receiving power. Switch to Motion Sensing Mode. Check for obstructions; reposition sensor.
Lights stay on continuously.	Motion sensor in Constant Light Mode. Continuous motion detected. Sensor faulty.	Switch to Motion Sensing Mode. Ensure no continuous motion in sensor's range. Contact support if issue persists.
Lights turn off too quickly/slowly.	Timer setting incorrect.	Adjust the timer switch on the motion sensor unit to the desired duration (38s, 75s, 150s, 300s).
Adhesive not sticking.	Surface not clean or smooth. Old adhesive.	Clean and dry the surface thoroughly before application. Use additional adhesive tape if needed.

## SPECIFICATIONS

<b>Brand</b>	HOUHUI
<b>Model</b>	B07S9BC616
<b>Light Color</b>	Warm White (3000K)
<b>Strip Length</b>	9.84 ft (3 meters)
<b>Power Source</b>	USB Powered (5V)
<b>Light Source Type</b>	LED (2835 beads)
<b>Motion Sensor Angle</b>	120°
<b>Motion Sensor Range</b>	Up to 5 meters
<b>Adjustable Timer</b>	38s, 75s, 150s, 300s
<b>Indoor/Outdoor Usage</b>	Indoor Only
<b>Water Resistance Level</b>	Not Water Resistant
<b>Average Life</b>	50,000 Hours
<b>Item Weight</b>	0.29 Pounds (approx. 4.66 ounces)
<b>UPC</b>	725756899950

## WARRANTY AND SUPPORT

For any questions, concerns, or technical assistance regarding your HOUHUI Motion Activated LED Strip Lights, please refer to the contact information provided with your purchase or visit the official HOUHUI store on Amazon:

[Visit the HOUHUI Store on Amazon](#)

Please retain your purchase receipt for warranty purposes.

© 2024 HOUHUI. All rights reserved.