

## AUTOSAVER88 ATMR0001

# AUTOSAVER88 Towing Mirrors User Manual

Model: ATMR0001  
Brand: AUTOSAVER88

## 1. PRODUCT OVERVIEW

The AUTOSAVER88 ATMR0001 Towing Mirrors are designed to enhance visibility and safety when towing. These mirrors offer a wider field of view compared to standard mirrors, reducing blind spots and providing a clearer perspective of your surroundings. They come equipped with multiple functions including power glass adjustment, heating for defrosting, integrated LED turn signals, and manual telescoping and folding capabilities.



Image 1.1: A pair of AUTOSAVER88 towing mirrors, showcasing their robust design and integrated features. The mirrors are black with a textured finish.

## 2. KEY FEATURES

---

### 2.1 Power Heated Glass

The mirrors feature power-adjustable main glass and an integrated heating element. This heating function helps to clear frost, ice, and fog from the mirror surface, ensuring clear visibility in adverse weather conditions such as rain, snow, and fog.

# POWER HEATED

Offers clearer vision in rainy, snowy, foggy days



Image 2.1: Illustration of the power heated mirror function, showing how it clears moisture for improved visibility.

## 2.2 Dual Glass Design

Each mirror incorporates a dual glass system: a flat main mirror with power control for accurate object and distance reflection, and a convex lower lens with manual control for a wider field of view. This combination minimizes blind spots and enhances overall situational awareness.



# DUAL GLASS

Flat Mirror (Power Control) - Really reflects objects and distance

Convex Lens (Manual Control) - Offers wide view



Image 2.2: Comparison showing the clear view provided by the dual glass design of AUTOSAVER88 mirrors versus wavy glass from other products.

## 2.3 Manual Telescoping Arms

The mirrors feature manual telescoping arms, allowing them to extend outwards to provide an even wider view, particularly useful when towing wide trailers. This feature significantly reduces blind areas and improves safety during maneuvers.

# Telescoping Arms - Wider View



**Non-telescoping**  
Large blind area

**Telescoping**  
Minimized blind area

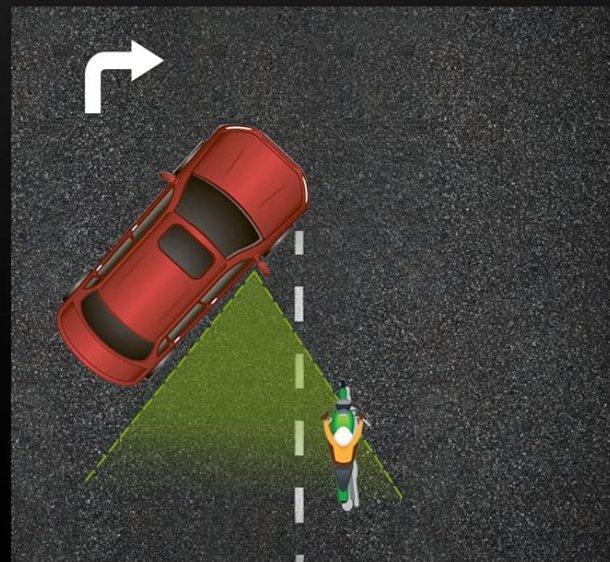
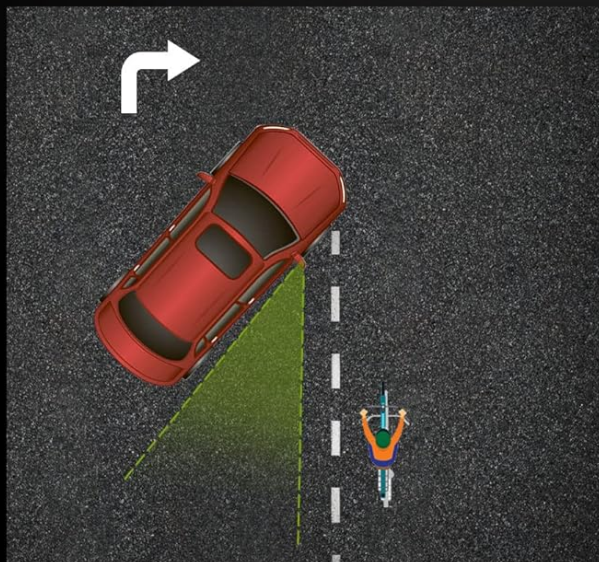
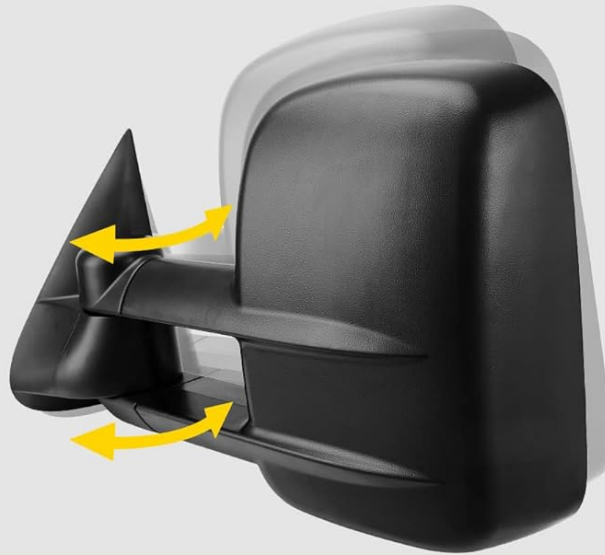


Image 2.3: Diagram illustrating the benefit of telescoping arms for a wider view and minimized blind spots compared to non-telescoping mirrors.

## 2.4 Foldable Design & Integrated Turn Signals

The mirrors are designed to be manually foldable, which helps prevent damage in tight spaces or when parking. They also include integrated LED arrow turn signal lights, enhancing visibility of your vehicle's intentions to other drivers.

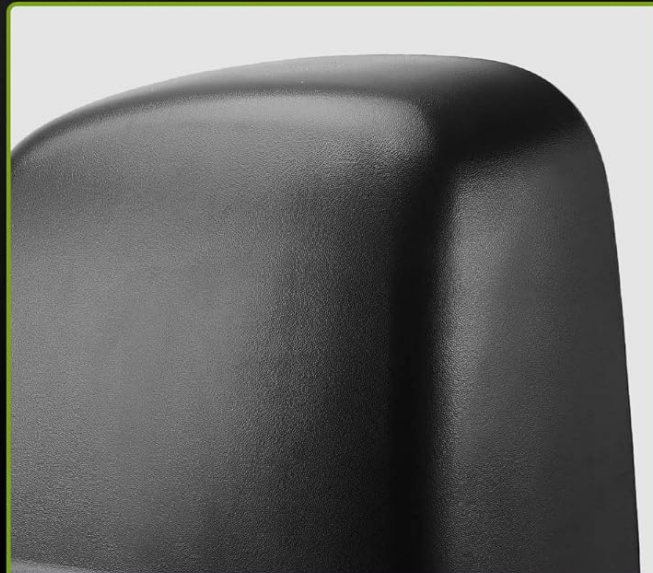




**Foldable for Avoiding Crashes**



**Arrow Turn Signal Light**



**Shock-proof ABS Housing**

Image 2.4: Visual representation of the mirror's folding capability, the integrated arrow turn signal light, and the shock-proof ABS housing.

## 2.5 Aerodynamic Anti-Vibration Design

Engineered with an aerodynamic profile, these mirrors effectively reduce vibration at high speeds, providing a stable and clear reflection. The robust ABS housing ensures durability and shock resistance.

# Aerodynamic Antivibration Design

Effectively reduces vibration at high speed



Image 2.5: Depiction of the aerodynamic design of the mirrors, showing how airflow is managed to reduce vibration at high speeds.

## 3. COMPATIBILITY

These towing mirrors are compatible with a range of GM vehicles. Please verify your vehicle's make, model, and year before installation to ensure proper fitment.

- Chevrolet Silverado / GMC Sierra: 2003-2006
- Chevrolet Silverado / GMC Sierra Classic: 2003-2006
- Cadillac Escalade: 2003-2006
- Chevrolet Tahoe / Suburban / Avalanche: 2003-2006
- GMC Yukon / Yukon XL / Yukon Denali Truck: 2003-2006

## 4. INSTALLATION (SETUP)

The AUTOSAVER88 towing mirrors are designed for a direct plug-and-play installation, requiring no complex wiring or modifications. It is recommended to have basic automotive knowledge or seek professional assistance if unsure.

## 4.1 Tools Required

- Socket Wrench Set
- Panel Removal Tool (optional, for interior trim)

## 4.2 Installation Steps

1. **Preparation:** Park your vehicle on a level surface and engage the parking brake. Turn off the ignition and disconnect the negative terminal of the vehicle's battery to prevent electrical shorts.
2. **Remove Old Mirror:** Carefully remove the interior door panel trim to access the mirror mounting bolts and electrical connector. Unplug the existing mirror's electrical connector. Unscrew the mounting bolts holding the old mirror in place and carefully remove it from the vehicle.
3. **Install New Mirror:** Position the new AUTOSAVER88 towing mirror onto the mounting studs. Ensure proper alignment.
4. **Connect Wiring:** Connect the new mirror's electrical plug to the vehicle's wiring harness. The design is plug-and-play, ensuring a seamless connection.
5. **Secure Mirror:** Re-install the mounting bolts and tighten them securely. Do not overtighten.
6. **Test Functionality:** Reconnect the vehicle's battery. Turn on the ignition and test all mirror functions: power adjustment, heating, and turn signals.
7. **Reassemble:** Once all functions are verified, reattach the interior door panel trim.



# PRODUCT SIZE

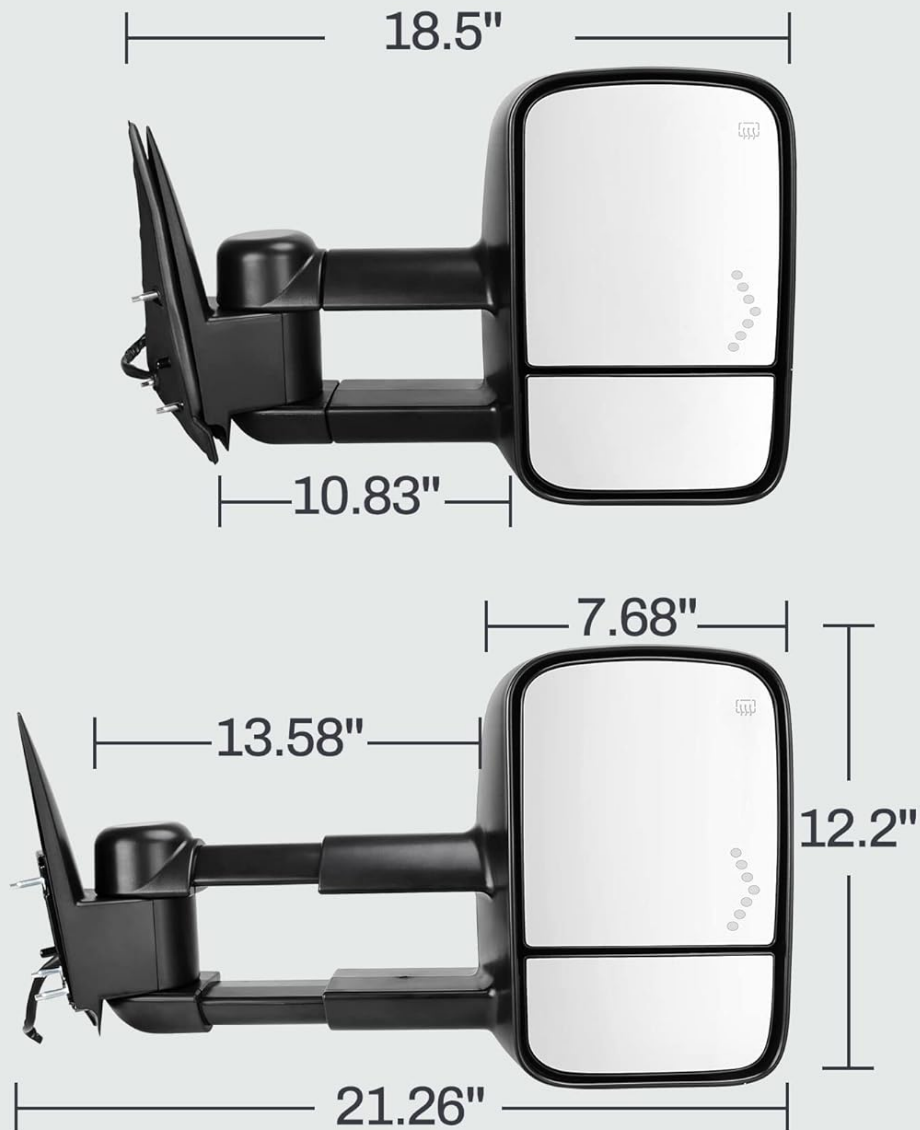


Image 4.1: Illustration of the plug-n-play connector, highlighting the ease of installation.

## 5. OPERATION

### 5.1 Power Mirror Adjustment

Use your vehicle's existing mirror control switch to adjust the main flat glass of the towing mirrors. This allows for precise positioning of the mirror view.

### 5.2 Heated Defrost Function

The heating element for defrosting is typically activated via your vehicle's rear defroster switch or a dedicated mirror heat button, if equipped. Refer to your vehicle's owner's manual for specific activation instructions.

### 5.3 Manual Telescoping

To extend the mirrors for a wider view, grasp the mirror housing firmly and pull it outwards until it locks into the desired extended position. To retract, push the mirror housing inwards until it is fully nested.

## 5.4 Manual Folding

To fold the mirrors against the vehicle body, gently push the mirror housing towards the vehicle. This is useful for navigating narrow spaces or parking.

## 5.5 LED Turn Signals

The integrated LED arrow turn signals will illuminate automatically when your vehicle's turn signals are activated, providing additional visibility to surrounding traffic.

# 6. MAINTENANCE

---

- **Cleaning:** Clean the mirror glass and housing regularly with a mild automotive cleaner and a soft cloth. Avoid abrasive cleaners that could scratch the surface.
- **Inspection:** Periodically inspect the mirrors for any signs of damage, loose connections, or wear. Ensure the telescoping and folding mechanisms operate smoothly.
- **Winter Care:** In freezing conditions, ensure the mirrors are free of ice before attempting to fold or telescope them to prevent damage to the mechanisms. Utilize the heating function to clear ice and frost.

# 7. TROUBLESHOOTING

---

## 7.1 Mirror Not Adjusting

- Check the electrical connection at the mirror and ensure it is fully seated.
- Verify that the vehicle's mirror control switch is functioning correctly.
- Check relevant fuses in your vehicle's fuse box.

## 7.2 Heating Function Not Working

- Ensure your vehicle's rear defroster or mirror heat switch is activated.
- Check the electrical connection for the heating element.
- Inspect relevant fuses.

## 7.3 Turn Signal Not Illuminating

- Verify that your vehicle's turn signals are functioning correctly.
- Check the electrical connection for the turn signal light.
- Ensure the LED array is not physically damaged.

## 7.4 Excessive Vibration at Speed

- Ensure the mirrors are securely mounted and all bolts are tightened.
- While the mirrors feature an anti-vibration design, external factors like tire balance or suspension issues can contribute to vehicle vibration.

If issues persist after troubleshooting, contact customer support for further assistance.

8. SPECIFICATIONS

Attribute	Detail
Brand	AUTOSAVER88
Model Number	ATMR0001
Material	ABS Glass
Item Weight	7.6 Kilograms (16.76 lbs)
Product Dimensions (L x W x H)	53 x 29 x 36 cm (20.87 x 11.42 x 14.17 inches)
Mirror Lens Type	Convex (lower), Flat (main)
Bulb Type	LED (for turn signals)
Special Features	Electric Heating, Extendable, Manual Folding, Wider Vision
Lift Type	Power (for main glass adjustment)
OEM Part Numbers	000767391, 000846303, 11009915, 11007067, 15904034, 15904035, C51552, C51562, GM1320355, GM1321355



# SEAMLESS INSTALLATION



Plug-N-Play Plug

Image 8.1: Diagram illustrating the key dimensions of the AUTOSAVER88 towing mirrors.

## 9. WARRANTY AND SUPPORT



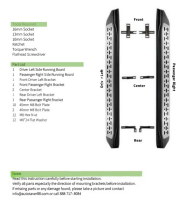

### 9.1 Warranty Information

Please refer to the product packaging or the manufacturer's official website for detailed warranty information. Typically, AUTOSAVER88 products come with a limited warranty covering manufacturing defects.

### 9.2 Customer Support

For technical assistance, installation queries, or warranty claims, please contact AUTOSAVER88 customer support through their official website or the retailer from whom the product was purchased. Have your model number (ATMR0001) and purchase details ready for faster service.

## Related Documents - ATMR0001

	<p><a href="#">AUTOSAVER88 One-Year Warranty Policy for Auto Parts</a></p> <p>This document outlines the one-year warranty policy provided by AUTOSAVER88, a supplier of aftermarket and OEM auto parts. It details conditions covered, such as product damage during transit, performance faults, and manufacturing defects, as well as exclusions for man-made damage. The policy also explains the process for contacting AUTOSAVER88 for defective items and the available resolutions including replacements, exchanges, and full refunds. Applicable to various Chevrolet, GMC, and Cadillac models.</p>
	<p><a href="#">AUTOSAVER88 Tri-Fold Soft Tonneau Cover Assembly Instructions</a></p> <p>Comprehensive assembly instructions for the AUTOSAVER88 Tri-Fold Soft Tonneau Cover, detailing part lists, warnings, and step-by-step installation guides for various truck models.</p>
	<p><a href="#">AutoSaver88 Running Board Installation Guide</a></p> <p>Step-by-step instructions for installing AutoSaver88 running boards, including tools required, parts list, and detailed procedures for vehicle preparation and mounting.</p>
	<p><a href="#">AUTOSAVER88 Quad-Fold Soft Tonneau Cover Assembly Instructions</a></p> <p>Step-by-step assembly instructions for the AUTOSAVER88 Quad-Fold Soft Tonneau Cover, including part list, warnings, and detailed installation guide.</p>