

Yakry WJ-DBNZ

Yakry Y22 HD Digital Wireless Backup Camera System

Model: WJ-DBNZ

1. PRODUCT OVERVIEW

The Yakry Y22 HD Digital Wireless Backup Camera System is designed to enhance driving safety and convenience for various large vehicles, including RVs, campers, trucks, and vans. This system features a 5-inch monitor and an IP69 waterproof camera, providing clear 1080P images and a 150° wide-angle view. Its dual antenna design ensures stable and interference-free signal transmission.

Key features include:

- **HD Digital Wireless Transmission:** Dual antennas provide stable signal up to 320ft in open areas, reducing delayed images.
- **5-inch Monitor:** Large display for clear 1080P images, aiding in driving and reversing.
- **150° Wide Angle Camera:** Expansive view to minimize blind spots.
- **IP69K Waterproof Camera:** Designed to withstand harsh weather conditions.
- **Recording Function:** Functions as a 'Car DVR' to record surroundings.
- **Furrion Pre-wired Compatibility:** Includes bracket adapters and pigtail wire plugs for easy integration with Furrion pre-wired RVs.
- **Expandable System:** Supports up to 4 cameras for comprehensive vehicle coverage.

2. PACKAGE CONTENTS

Before installation, please verify that all components are present:



PACKAGE CONTAINS:

- | | | |
|-----------------------------|---------------------|--------------|
| ① Cigarette lighter adapter | ⑤ User instructions | ⑧ 3M sticker |
| ② Power Cord*2 | ⑥ Other Accessories | ⑨ Camera |
| ③ Antenna*3 | ⑦ Test wire | ⑩ Monitor |
| ④ Furrion bracket | | |

Image: Detailed view of the Yakry Y22 backup camera system components, including the monitor, camera, antennas, power cords, Furrion bracket, user instructions, and other accessories.

1. Cigarette Lighter Adapter
2. Power Cord (x2)
3. Antenna (x3)
4. Furrion Bracket
5. User Instructions (this manual)
6. Other Accessories (mounting hardware, test wire)
7. Camera
8. Monitor

3. SETUP AND INSTALLATION

The Yakry Y22 system offers flexible installation options for various vehicles. It is designed for straightforward setup, including compatibility with Furrion pre-wired RVs.

3.1 Camera Installation

The camera can be installed using a general wiring method or integrated with a Furrion pre-wired system.



Image: Illustrates the ease of DIY installation, showing both general wiring and Furrion pre-wired setup options for the camera.

General Installation:

1. **Mount the Camera:** Secure the camera to the rear of your vehicle (RV, camper, truck, van) using the provided mounting hardware. Ensure a clear line of sight.
2. **Connect Power:** Connect the camera's power wires. Typically, the red wire connects to a 12V-24V power source (e.g., reverse light, running light, or tail light) and the black wire to ground.
3. **Attach Antennas:** Screw the antennas onto the camera for optimal signal transmission.

Furrion Pre-wired Installation:

For vehicles with Furrion pre-wiring, use the included bracket adapters and pigtail wire plugs for a seamless connection.

1. **Remove Existing Cover:** Detach the Furrion pre-wire cover on your RV.
2. **Install Furrion Bracket:** Mount the provided Furrion bracket.
3. **Connect Camera:** Use the pigtail wire to connect the Yakry camera to the existing Furrion wiring.
4. **Secure Camera:** Attach the camera to the Furrion bracket.

3.2 Monitor Installation

The monitor can be installed on the windshield or dashboard.

- Real-time viewing

Wide Range of Application



RV



Trailer



Class A Motorhome



Truck



Camper



5th wheels



Pickup truck and trailer



Tractor



- Vehicle safety monitoring



- Parking assistance



Image: Shows the monitor mounted on a vehicle's windshield and dashboard, illustrating two installation methods.

1. **Choose Location:** Select a suitable location on your windshield or dashboard that does not obstruct your view.
2. **Mount Monitor:** Use the suction cup mount for windshield installation or the adhesive base for dashboard mounting.
3. **Connect Power:** Plug the monitor's power cord into your vehicle's cigarette lighter adapter or hardwire it to a 12V-24V power source.
4. **Attach Antennas:** Screw the antennas onto the monitor.

4. OPERATING INSTRUCTIONS

Once installed, the Yakry Y22 system provides real-time video feedback to assist with driving and parking.

4.1 Powering On and Pairing

1. **Power On:** Ensure both the camera and monitor are receiving power. The system should automatically power on when the vehicle's ignition is engaged (if wired to ignition) or when the connected light source is activated.
2. **Automatic Pairing:** The camera and monitor are pre-paired at the factory. If no image appears, ensure both units are powered and within range. Manual pairing instructions are in the detailed user manual.

4.2 Monitor Functions

Touch Button

Provides a more intuitive and convenient operating experience



Touch Button



HD 1080P



Image: Close-up of the monitor's touch button interface, highlighting its intuitive design for convenient operation.

- **Navigation Buttons:** Use the 'OK', 'CH' (Channel), 'MENU', and arrow buttons to navigate the monitor's settings.
- **Image Flip:** Adjust the image orientation (Normal, Mirror, Inverted Front, Inverted Mirror) to suit your viewing preference.
- **Guide Lines:** Customize parking guide lines (width, horizontal, vertical adjustment) for precise maneuvering.
- **Multi-Camera Support:** If additional cameras are installed, use the 'CH' button to switch between camera views. The system supports up to 4 cameras.

4.3 Recording Function (Car DVR)

The system can record video footage to a MicroSD card (4-128GB, not included) for continuous monitoring.

Loop Recording

Records images of the front of the vehicle to recreate real driving situations



Loop Record



Support 4~128GB



Folder Storage

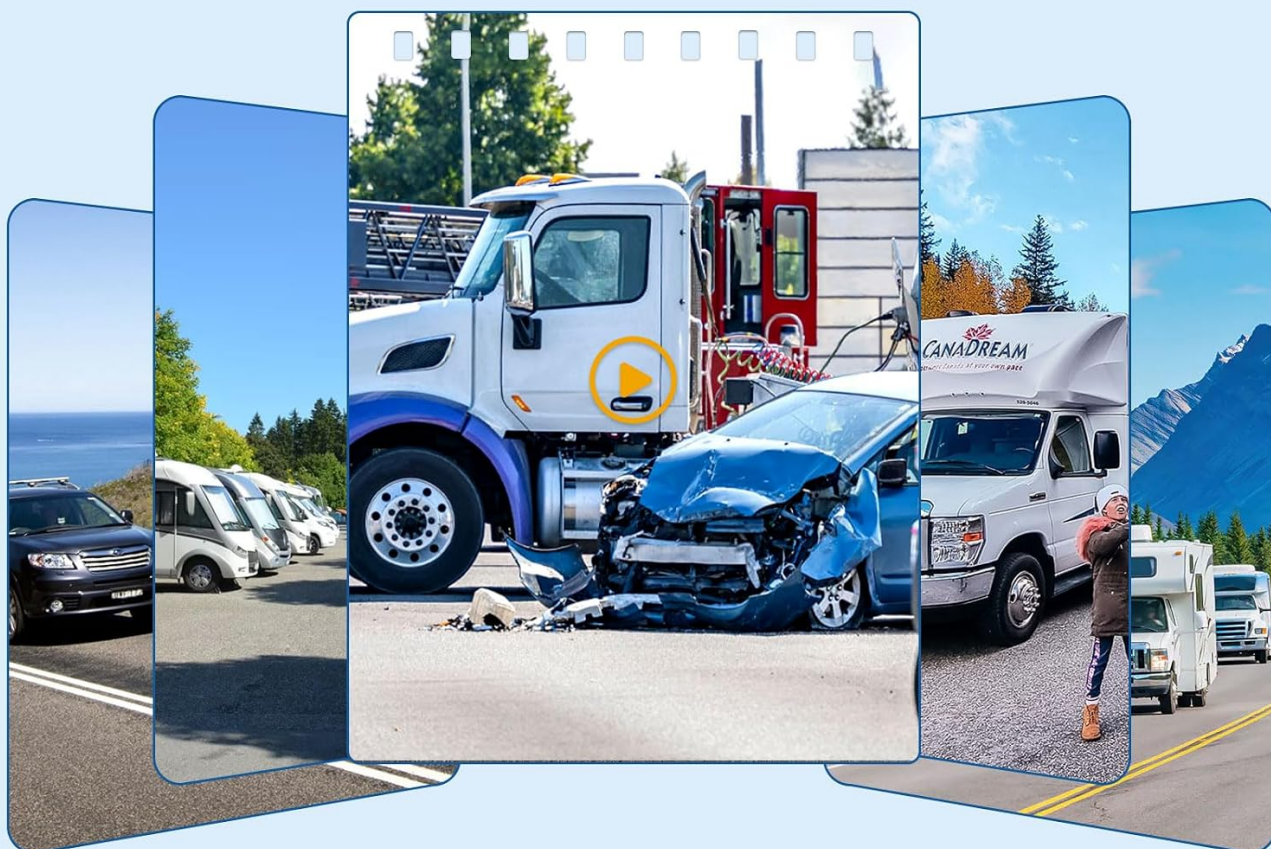


Image: Illustrates the loop recording function, showing icons for loop record, MicroSD card support (4-128GB), and folder storage.

1. **Insert MicroSD Card:** Insert a compatible MicroSD card into the designated slot on the monitor.
2. **Activate Recording:** Refer to the monitor's menu settings to enable and configure the loop recording function.
3. **View Recordings:** Recorded footage can be reviewed directly on the monitor or by transferring the MicroSD card to a computer.

5. MAINTENANCE

Proper maintenance ensures the longevity and optimal performance of your Yakry Y22 system.

5.1 Cleaning

- **Camera Lens:** Regularly clean the camera lens with a soft, damp cloth to ensure clear image quality. Avoid abrasive cleaners.
- **Monitor Screen:** Use a soft, lint-free cloth to wipe the monitor screen. For stubborn smudges, a screen cleaner designed for electronics can be used.

5.2 Weather Resistance

150° Wide Viewing Angle

Wide angle range captures a wider scene, providing surveillance range and coverage area, helping to reduce blind spots and improve safety



Image: Illustrates the IP69 waterproof rating of the camera, showing it being splashed with water in a rainy environment.

- The camera is IP69K waterproof, designed to resist rainwater and function properly in various weather conditions.
- Ensure all connections are secure and sealed to prevent water ingress, especially during installation.

6. TROUBLESHOOTING

If you encounter issues with your Yakry Y22 system, refer to the following common troubleshooting steps:

Problem	Possible Cause	Solution
No image on monitor	No power to camera or monitor; Unpaired units; Signal interference.	Check power connections for both camera and monitor. Ensure the camera's power source (e.g., running lights) is active. Re-pair units if necessary (refer to full manual). Reduce distance or obstructions between camera and monitor.
Image flickering or poor signal	Signal interference; Distance too great; Loose antenna connections.	Ensure antennas are securely attached to both camera and monitor. Minimize large metal obstructions between units. The dual antenna design helps with stability, but extreme distances or interference sources can still affect performance.
Recording not working	No MicroSD card; Incompatible MicroSD card; Card full; Recording function disabled.	Insert a compatible MicroSD card (4-128GB). Format the card via the monitor's menu. Enable recording in the settings.
Monitor too bright/dim at night	Brightness settings not adjusted.	Adjust the brightness settings through the monitor's menu.

For more detailed troubleshooting or persistent issues, please contact Yakry customer support.

7. SPECIFICATIONS

Feature	Detail
Brand	Yakry

Feature	Detail
Model Number	WJ-DBNZ
Screen Size	5 Inches
Product Dimensions	12.2"L x 3.1"W x 6.1"H
Compatible Devices	Monitor
Installation Type	Dashboard Mount, Surface Mount
Voltage	12 Volts
Optical Sensor Technology	CMOS
Real Angle of View	150 Degrees
Connector Type	Wireless
Field Of View	150 Degrees
Display Technology	LCD
Lux Rating	0.1 Lux
Video Capture Resolution	1080p
UPC	751940328265
Manufacturer	iStrong

8. WARRANTY AND SUPPORT

Yakry is committed to providing high-quality products and excellent customer service.

8.1 Warranty Information

- **2-Year Warranty:** The Yakry Y22 system comes with a 2-year warranty covering manufacturing defects.
- **2-Year Replacement Service:** Yakry offers a 2-year replacement service for eligible products.
- **30-Day Money-Back Guarantee:** If you are not satisfied with your purchase, you may be eligible for a 30-day money-back guarantee.

8.2 Technical Support

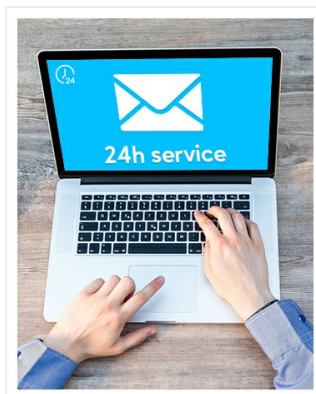


Image: A laptop displaying an email icon and '24h service', symbolizing available customer support.

Yakry provides dedicated technical support to assist with any questions or issues you may encounter during the installation or operation of your product. Please refer to the contact information provided in your product packaging or on the official Yakry website for assistance.