

Manuals+

[Q & A](#) | [Deep Search](#) | [Upload](#)

[manuals.plus](#) /

› [MUNBYN](#) /

› [MUNBYN Shipping Label Printer RealWriter 941 User Manual](#)

MUNBYN ITPP941

MUNBYN Shipping Label Printer RealWriter 941 User Manual

Model: ITPP941

1. INTRODUCTION

This manual provides detailed instructions for the setup, operation, maintenance, and troubleshooting of your MUNBYN Shipping Label Printer RealWriter 941. Please read this manual thoroughly before using the printer to ensure optimal performance and longevity.



Image: The MUNBYN Shipping Label Printer RealWriter 941, a compact white and black thermal printer, shown actively printing a shipping label.

2. SETUP

2.1. What's in the Box

Verify that all components are present in the packaging:

- Thermal Printer
- Power Adapter
- Power Cable
- USB Cable
- Labels (for initial testing)



Image: An overhead view of the MUNBYN printer box contents, including the printer, power adapter, power cable, USB cable, and a roll of labels.

2.2. Physical Connection

1. Connect the power adapter to the printer and then plug it into a power outlet.
2. Connect the USB cable from the printer to your computer (Windows or macOS).

2.3. Driver Installation

The MUNBYN RealWriter 941 is a USB-only thermal printer compatible with Windows and macOS operating systems. Drivers are required for proper functionality.

- For Windows and macOS, download the latest drivers from the official MUNBYN website or use the provided installation CD/USB if included.
- Follow the on-screen instructions to complete the driver installation.
- For Chromebook users, install the Munbyn Printer Extension from the Chrome Web Store.



Image: A screenshot showing the Munbyn Printer Extension page in the Chrome Web Store, indicating compatibility with Chromebooks.

2.4. Loading Labels

The printer supports thermal labels from 1.57" to 4.3" wide. It features automatic label identification.

1. Ensure the printer is powered on.
2. Open the top cover of the printer.
3. Insert the stack of thermal labels into the rear feed slot, ensuring the print side is facing up.
4. Adjust the label guides to fit snugly against the edges of the labels.
5. Close the top cover. The printer will automatically detect and calibrate to the label size.

Print Custom Stickers with MUNBYN

Suitable size width from 1.57"-4.3"



Circle

NAME
123 MAIN STREET
CITY
001-0001

NAME
123 MAIN STREET
CITY
001-0001

2.25"x1.25"



3"x2"

SIZE M
2000003874
429.90\$
79.90\$

3"x3"



4"x6"

Image: The MUNBYN printer shown printing various label types and sizes, including shipping labels, circular labels, and small rectangular labels, demonstrating its versatility.

3. OPERATING INSTRUCTIONS

3.1. Printing Labels

Once the printer is set up and labels are loaded, you can print from any application that supports printing.

1. Open the document or label you wish to print (e.g., a shipping label PDF).
2. Select 'Print' from your application's menu.
3. Choose the MUNBYN RealWriter 941 as your printer.
4. Ensure the paper size settings in your print dialogue match the labels loaded in the printer (e.g., 4x6 inches).
5. Click 'Print'.



Image: The MUNBYN printer connected to a laptop, demonstrating a label being printed from the computer screen to the printer.

3.2. Compatibility

The MUNBYN thermal label printer is designed for broad compatibility with various shipping and selling platforms, including:

- Etsy
- Shopify
- eBay
- Amazon
- Poshmark
- Ship Station
- Shipping Easy
- Shippo
- Ordoro
- Endicia Dazzle
- Shipwire
- Shipworks
- Stockx
- Xps Ship

Compatible with All Major Shipping and Sales Platforms

Etsy

amazon

ebay

shopify

PayPal

FedEx

Shipwire

easyship

ninjaban

XPS
ship

J&T EXPRESS

easypost

shippo

shipping
easy

KERRY

ShipStation

ORDORO

stamps
.com

endicia

UNITED STATES
POSTAL SERVICE

DHL
WORLDWIDE EXPRESS

POSHMARK

ups

FLASH
EXPRESS



Image: The MUNBYN printer surrounded by logos of various e-commerce and shipping platforms, illustrating its wide compatibility.

3.3. Using the MUNBYN Print App

For convenient printing from mobile devices (iPhone/Mac OS/Android), download the 'MUNBYN Print' app.

- Scan the QR code below with your smartphone or tablet.
- Download and install the app.
- Follow the in-app instructions to connect to your printer and print.

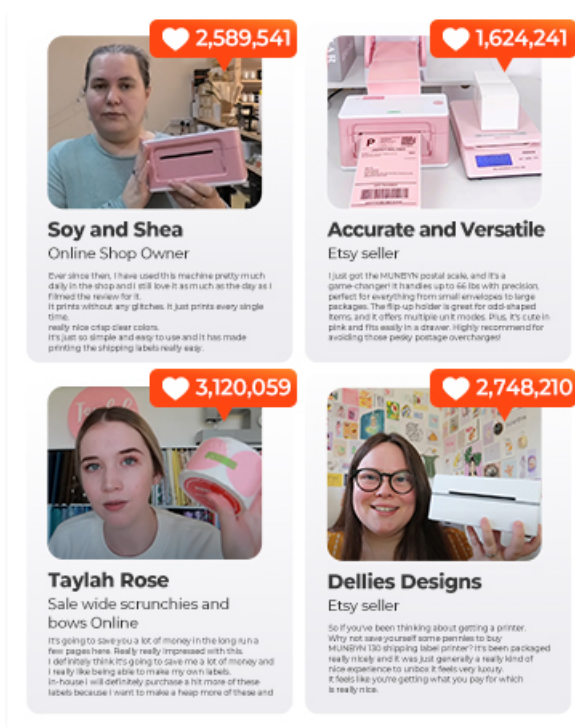


Image: A smartphone screen displaying a QR code for downloading the 'MUNBYN Print' app, compatible with Android 7 / iOS 11 and newer versions.

4. MAINTENANCE

4.1. Cleaning the Print Head

Regular cleaning of the print head ensures clear and consistent print quality. Use a cotton swab lightly dampened with isopropyl alcohol.

1. Turn off the printer and unplug the power cable.
2. Open the top cover to access the print head.
3. Gently wipe the print head surface with the alcohol-dampened cotton swab.
4. Allow the print head to dry completely before closing the cover and reconnecting power.

4.2. Label Storage

Store thermal labels in a cool, dry place away from direct sunlight and heat sources to prevent premature fading or damage to the thermal coating.

5. TROUBLESHOOTING

If you encounter issues with your MUNBYN printer, refer to the following common problems and solutions. For a comprehensive guide, please consult the official Troubleshooting Guide PDF available for download.

- **Printer not responding:** Ensure the power cable and USB cable are securely connected. Check if the printer's power indicator light is on. Restart both the printer and your computer.
- **Labels not feeding correctly:** Verify that labels are loaded correctly and the label guides are adjusted to the label width. Ensure there are no obstructions in the paper path.
- **Poor print quality (faded, smudged, or incomplete prints):** Clean the print head as described in the

Maintenance section. Ensure you are using high-quality thermal labels. Check print settings in your software to ensure resolution and darkness are appropriate.

- **Printer beeps continuously:** This may indicate an error or an empty label roll. Check the label supply and clear any paper jams.
- **Driver issues:** Reinstall the printer drivers from the official MUNBYN website. Ensure your operating system is up to date.

For further assistance, refer to the [Troubleshooting Guide \(PDF\)](#).

6. SPECIFICATIONS

Detailed technical specifications for the MUNBYN Shipping Label Printer RealWriter 941 (Model ITPP941):

Feature	Specification
Model Name	P941
Item Model Number	ITPP941
Printing Technology	Thermal
Resolution	203 x 203 DPI (203 Dots Per Inch)
Max Print Speed Monochrome	150mm/s (72 ppm)
Maximum Media Size	4 x 6 inch
Print Width	1.57" to 4.3"
Connectivity Technology	USB
Compatible Devices	PC, Laptops, Windows, Mac, Chromebook
Power Consumption	60 Watts
Item Weight	3.08 pounds (1.4 Kilograms)
Product Dimensions	3.8"D x 7.8"W x 4.3"H (1.61 x 2.99 x 1.54 inches)
Memory Storage Capacity	4 MB
UPC	613310860730



Image: A visual comparison of the MUNBYN printer's dimensions (7.79 inches length, 4.5 inches height) against another printer model.



Image: A comparison table showing different MUNBYN printer models (941U, 941BP, 941AP) with their connectivity, compatible devices, resolution, and max print speed.

7. WARRANTY AND SUPPORT

7.1. Warranty Information

MUNBYN provides perpetual customer support and product protection for any product issues. The manufacturer's warranty period is two years from the date of purchase.

7.2. Customer Support

For any questions or assistance, please contact MUNBYN customer support:




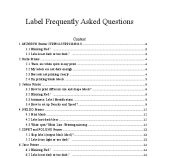


- **Phone:** +1 628 229 3612 (Monday through Friday, EST 9:00-24:00, excluding public holidays)
- **Email:** support@munbyn.com
- **Live Chat:** Available on the official MUNBYN website.
- **Remote Desktop Operations Support:** Available as needed.

When contacting support, please provide your order number.



Image: A graphic illustrating the various customer support options offered by MUNBYN, including phone call, teaching video, live chat, and remote desktop support.

Related Documents - ITPP941

	<p>MUNBYN Logistics Label Printer User Guide - Setup and Operation</p> <p>Comprehensive user guide for the MUNBYN Logistics Label Printer (ITPP941), covering setup, driver installation for Windows and Mac, label calibration, troubleshooting, and specifications.</p>
	<p>MUNBYN ITPP941 Label Printer: Frequently Asked Questions and Troubleshooting Guide</p> <p>Find answers to common questions about the MUNBYN ITPP941 Label Printer. This guide covers installation, printing issues, print quality, and troubleshooting for seamless operation.</p>
	<p>MunbynPrinter User Manual - Setup, Configuration, and Operation Guide</p> <p>Comprehensive user manual for the MunbynPrinter, covering software installation, printer configuration, print operations, settings, and troubleshooting. Learn how to print 4x6 and 8x11 labels efficiently with MUNBYN's software.</p>
	<p>Label Printer Troubleshooting FAQ: MUNBYN, Rollo, Jadens, and More</p> <p>Comprehensive FAQ and troubleshooting guide for common issues with MUNBYN, Rollo, Jadens, NELKO, IDPRT, POLONO, and Jiose label printers. Covers print quality, connectivity, and calibration problems.</p>
	<p>MUNBYN Label Printer User Manual and Troubleshooting Guide</p> <p>Comprehensive user manual and troubleshooting guide for MUNBYN label printers, covering setup, common issues like blinking red lights, and label darkness adjustments for various models including ITPP941, Rollo, IDPRT, POLONO, Jiose, and Jadens.</p>
	<p>MUNBYN RealWriter 130 Bluetooth Label Printer User Manual</p> <p>User manual for the MUNBYN RealWriter 130 Bluetooth thermal label printer, covering setup, features, specifications, and troubleshooting. Includes instructions for Windows and macOS.</p>