

manuals.plus /

› [myCharge](#) /

› [myCharge HubMax HBLC10V Portable Charger User Manual](#)

myCharge HBLC10V

myCharge HubMax HBLC10V Portable Charger User Manual

Model: HBLC10V

1. PRODUCT OVERVIEW

The myCharge HubMax HBLC10V is a portable power bank designed to charge various mobile devices. It features an internal 10050mAh battery, built-in Lightning and USB-C cables, and an integrated foldable wall plug for convenient recharging.



Image 1.1: The myCharge HubMax HBLC10V portable charger, showcasing its compact design with integrated Lightning and USB-C cables, and a foldable wall plug.

2. PACKAGE CONTENTS

- myCharge HubMax HBLC10V Portable Charger
- Integrated Lightning Cable
- Integrated USB-C Cable
- Integrated Wall Plug

3. SETUP AND INITIAL CHARGING

Before first use, it is recommended to fully charge your myCharge HubMax HBLC10V.

1. **Locate the Wall Plug:** Extend the foldable wall prongs located on the side of the device.
2. **Connect to Power:** Plug the device directly into a standard AC wall outlet.
3. **Monitor Charging:** The LED indicator lights on the device will illuminate to show the charging status. A full charge typically takes approximately 4.6 hours. All indicator lights will be solid when fully charged.



Image 3.1: The myCharge HubMax HBLC10V connected to a wall outlet for recharging, illustrating its integrated wall plug and multiple charging outputs.

4. OPERATING INSTRUCTIONS

The myCharge HubMax HBLC10V allows you to charge up to three devices simultaneously.

4.1 Charging Devices with Built-in Cables

1. **Identify Cable:** Select the appropriate built-in cable for your device (Lightning for Apple devices, USB-C for compatible Android and other devices).
2. **Connect Device:** Plug the selected cable directly into your mobile device's charging port.
3. **Begin Charging:** The myCharge HubMax will automatically begin charging your device. The LED indicator lights will show the remaining battery level of the power bank.

4.2 Charging a Third Device via USB-A Port

For devices requiring a standard USB-A connection, use the integrated USB-A port.

1. **Connect Your Cable:** Plug your device's USB-A charging cable (not included) into the USB-A port on the myCharge HubMax.
2. **Connect Device:** Plug the other end of your cable into your mobile device.
3. **Begin Charging:** Charging will commence automatically.

Everything Built-In

No cables or adaptors to lose or rebuy

Built-in wall prongs

For easy and convenient recharging

Charge any

Apple or Android device

Built-in Lightning® & USB-C cables

Quickly charge your
favorite devices

Anodized
aluminum
Body

Charge up to
3 devices

All at the same time

Built-in USB-A

Charge a 3rd device

10,050mAh
internal battery

For 60 hours of extra battery life

Image 4.1: A detailed view of the myCharge HubMax HBLC10V, emphasizing its all-in-one design with built-in wall prongs, Lightning and USB-C cables, and an additional USB-A port for charging up to three devices.

4.3 Fast Charging Capabilities

The HubMax supports Power Delivery and Quick Charge 3.0 via its USB-C cable, enabling faster charging for compatible devices. This can charge devices up to 2.4 times faster than standard chargers.

12W High Speed Charging



0-50%
in under
30 minutes

2.4x faster
than this

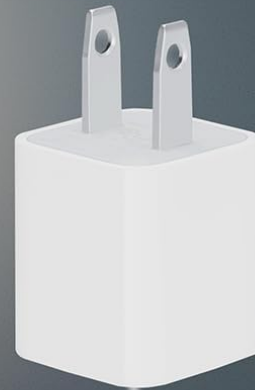


Image 4.2: The myCharge HubMax HBL10V demonstrating its 12W high-speed charging capability, capable of charging a device from 0% to 50% in under 30 minutes.

5. MAINTENANCE AND CARE

- **Storage:** Store the power bank in a cool, dry place away from direct sunlight and extreme temperatures.
- **Cleaning:** Use a soft, dry cloth to clean the exterior of the device. Avoid using harsh chemicals or abrasive materials.
- **Handling:** Handle the device with care. Avoid dropping it or subjecting it to strong impacts, as this can damage internal components and shorten its lifespan.
- **Battery Life:** For optimal battery health, avoid completely draining the power bank frequently.

Recharge it when the battery level is low.

6. TROUBLESHOOTING

If you encounter issues with your myCharge HubMax HBLC10V, refer to the following common solutions:

- **Device Not Charging:**
 - Ensure the myCharge HubMax itself is sufficiently charged. Check the LED indicators.
 - Verify that the built-in cable or your external USB-A cable is securely connected to both the power bank and your device.
 - Try a different device or cable to rule out issues with the connected device or cable.
- **Slow Charging:**
 - Ensure your device supports fast charging protocols (Power Delivery, Quick Charge 3.0) to benefit from the HubMax's fast charging capabilities.
 - Charging multiple devices simultaneously may reduce the charging speed for individual devices.
 - Check if the charging cable is damaged.
- **Power Bank Not Recharging:**
 - Ensure the wall plug is fully extended and securely inserted into a working AC wall outlet.
 - Try a different wall outlet.

If problems persist, please contact myCharge customer support for further assistance.

7. SPECIFICATIONS

Feature	Detail
Model Number	HBLC10V
Battery Capacity	10050 mAh (Lithium Ion)
Product Dimensions	2.8 x 0.9 x 4.6 inches
Item Weight	10.2 ounces
Built-in Cables	Lightning, USB-C
Additional Port	USB-A
Recharge Time	Approx. 4.6 hours (via integrated wall plug)
Special Features	Integrated Wall Plug, Fast Charging (PD, QC 3.0)
Manufacturer	myCharge

8. WARRANTY AND SUPPORT

myCharge products are typically covered by a manufacturer's warranty. For specific warranty details, registration, or to initiate a warranty claim, please refer to the official myCharge website or contact their customer support directly.

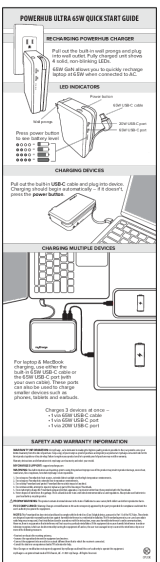


For technical assistance, troubleshooting not covered in this manual, or general inquiries, please visit the

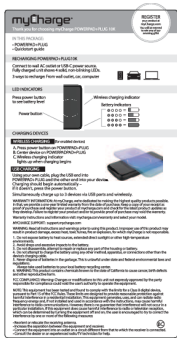
myCharge support page or contact their customer service department.

Note: Warranty terms and support availability may vary. Always refer to the latest information provided by the manufacturer.

© 2025 myCharge. All rights reserved.

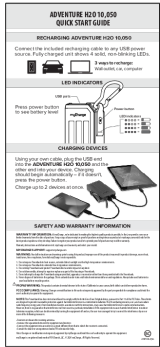
Related Documents - HBLC10V

	<p>myCharge Adventure 4400mAh Portable Charger User Guide & Safety Information</p> <p>Learn how to recharge and use your myCharge Adventure 4400mAh portable power bank, including important safety warnings, warranty information, and FCC compliance.</p>
	<p>myCharge PowerHub Ultra 65W Quick Start Guide</p> <p>Get started quickly with the myCharge PowerHub Ultra 65W portable charger. This guide explains how to recharge the power bank, charge your devices (laptops, phones, tablets), and provides essential safety and warranty information.</p>
	<p>myCharge True Universal 3-in-1 Charging Stand Quick Start Guide</p> <p>A quick start guide for the myCharge True Universal 3-in-1 Charging Stand, detailing system components, wireless charging instructions for multiple devices, audible tones, and LED charging light indicators.</p>
	<p>myCharge POWERPAD+CABLES 10K Quickstart Guide</p> <p>Quickstart guide for the myCharge POWERPAD+CABLES 10K, detailing package contents, recharging instructions, LED indicators, charging devices wirelessly and via USB, and warranty information.</p>



[myCharge PowerPad+Plug 10K Quick Start Guide](#)

This guide provides instructions for the myCharge PowerPad+Plug 10K, including setup, charging, and safety information. It covers both wireless and USB charging, LED indicators, and FCC compliance.



[myCharge Adventure H20 10,050 Quick Start Guide | Portable Power Bank](#)

Quick start guide for the myCharge Adventure H20 10,050 portable power bank. Learn how to recharge, charge devices, and important safety information.