



Manuals.plus /

- › EnerPlex /
- › EnerPlex 13-inch Twin Size Air Mattress Instruction Manual

## EnerPlex 83221

# EnerPlex 13-inch Twin Size Air Mattress Instruction Manual

Model: 83221 | Brand: EnerPlex

### INTRODUCTION

Thank you for choosing the EnerPlex 13-inch Twin Size Air Mattress. This self-inflating air bed is designed for portable travel and home use, offering comfort and convenience. This manual provides essential information for the safe and efficient setup, operation, and maintenance of your air mattress.

# the ultimate **AIR MATTRESS**

*with easy inflate built-in pump*



*inflate & deflate  
in minutes*

*available  
in 8 sizes*

**EnerPlex**

Image: The EnerPlex 13-inch Twin Size Air Mattress, fully inflated and ready for use.

## **WHAT'S IN THE BOX**

- EnerPlex 13-inch Twin Size Air Mattress with Built-in Pump
- Storage/Carry Bag
- Repair Patches (quantity may vary)

bring

# COMFORT ANYWHERE

*includes oversized travel ready bag for your journey*

EnerPlex™

Image: The EnerPlex air mattress neatly folded and stored in its oversized travel bag.

## SETUP INSTRUCTIONS

1. **Unpack:** Remove the air mattress from its storage bag and unroll it on a clean, flat surface. Ensure the area is free of sharp objects.
2. **Locate Pump:** Identify the built-in pump unit on the side of the mattress. Open the compartment to access the power cord.
3. **Connect Power:** Plug the power cord into a standard U.S. electrical outlet.
4. **Prepare for Inflation:** Ensure the **Inflation Valve** is turned to the "OPEN" position and the **Deflation Valve** is turned to the "CLOSE" position.
5. **Inflate:** Flip the "POWER" switch to "ON". The mattress will begin to inflate. Allow it to inflate to your desired firmness. The twin size typically inflates in under 2 minutes.
6. **Secure Valve:** Once inflated, turn the **Inflation Valve** to the "CLOSE" position and switch the "POWER" to "OFF".

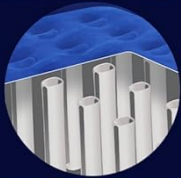
Video: Watch a demonstration of the EnerPlex Air Mattress inflation and deflation process using the built-in pump.

# REST EASIER

wherever you dream



*plush premium  
quilted top*



*cushioned coil  
beams support like a  
traditional mattress*

**EnerPlex**

Image: A detailed view of the built-in pump, showing the inflation and deflation valves and power switch.

## OPERATING INSTRUCTIONS

### Deflation

1. **Prepare for Deflation:** Ensure the **Deflation Valve** is turned to the "OPEN" position and the **Inflation Valve** is turned to the "CLOSE" position.
2. **Deflate:** Flip the "POWER" switch to "ON". The pump will begin to extract air from the mattress.
3. **Complete Deflation:** Once fully deflated, turn the **Deflation Valve** to the "CLOSE" position and switch the "POWER" to "OFF".

### Adjusting Firmness

The built-in pump allows for real-time adjustment of air pressure. To increase firmness, briefly turn the pump to "INFLATE". To decrease firmness, briefly turn the pump to "DEFLATE". Adjust until your desired comfort level is achieved.

## MAINTENANCE

### Cleaning

The mattress cover material is PVC with flocking. For cleaning, **Hand Wash Only**. Do not machine wash or use harsh chemicals.

### Storage

After deflating, carefully fold the air mattress to remove any remaining air. Store the mattress in its provided carry bag in a cool, dry place away from direct sunlight and extreme temperatures. Ensure the power cord is neatly tucked into its compartment before storage.

### Repair Patches

In case of small punctures, use the included repair patches. Clean the damaged area, apply the patch firmly, and allow sufficient time for it to adhere before re-inflating.

## TROUBLESHOOTING

Problem	Possible Cause	Solution
Mattress not inflating/deflating	Power cord not plugged in, valves in wrong position, power switch off.	Ensure power cord is securely plugged in. Check that the inflation/deflation valves are in the correct "OPEN" or "CLOSE" position for the desired action. Turn the power switch to "ON".
Mattress losing air	Valves not fully closed, small puncture, pump compartment not sealed.	Ensure both valves are tightly closed after inflation. Inspect the mattress for punctures and use repair patches if necessary. Verify the pump compartment cover is securely closed.
Pump is loud	This is normal operation.	The built-in pump operates with a noticeable sound during inflation and deflation. This is typical for high-speed air pumps.

## SPECIFICATIONS

Feature	Detail
Size	13" Twin Size
Product Dimensions (L x W x Th)	76" x 38" x 13"
Material	Polyvinyl Chloride (PVC)
Cover Material	PVC with flocking
Item Weight	12.3 Pounds
Weight Capacity Maximum	300 Pounds
Special Feature	Adjustable, Inflatable, Portable
Construction Type	Coil Beam
Water Resistance Level	Waterproof
Product Care Instructions	Hand Wash Only
Model Name	83221
UPC	843797121554

## SAFETY WARNINGS

- Always inflate and deflate the mattress according to the instructions provided.
- Do not exceed the maximum weight limit of 300 pounds.
- Be cautious of sharp objects and excessive moisture to prevent punctures.
- This mattress is designed to be firm, which may not be suitable for all users.
- Do not operate the pump while both valves are closed.
- U.S. Voltage Only.

## WARRANTY & SUPPORT

The EnerPlex Air Mattress comes with a 2-year warranty. For customer service or support, please call: **1-877-207-5874**.