

[manuals.plus](#) /

› [Top Race](#) /

› [Top Race 3-in-1 Construction Toys - Easy Assembly Take Apart Construction Trucks with Remote Control and Drill - 3 Building Models for Kids Ages 3 and Up - Ideal for Indoor and Outdoor Play](#)

## Top Race DIY100-200-300

# Top Race 3-in-1 Construction Toys User Manual

Model: DIY100-200-300

### INTRODUCTION

The Top Race 3-in-1 Construction Toys set offers an engaging and educational play experience, allowing children to build and disassemble three different construction vehicle models: a dump truck, a cement mixer, and a crane truck. This set includes a battery-powered drill for easy assembly and a remote control for interactive play, fostering creativity, motor skills, and problem-solving abilities.



Image: The complete Top Race 3-in-1 Construction Toys set, highlighting its versatility and key components.

## SAFETY INFORMATION

Always supervise children during play. Keep small parts away from children under 3 years of age to prevent choking hazards. Do not mix old and new batteries. Do not mix alkaline, standard (carbon-zinc), or rechargeable (nickel-cadmium) batteries. Remove batteries if the toy is not used for an extended period.

## WHAT'S IN THE BOX

Your Top Race 3-in-1 Construction Toys set includes:

- Main vehicle chassis
- Interchangeable parts for Dump Truck, Cement Mixer, and Crane Truck
- Battery-powered drill/remote control unit
- Manual screwdriver handle
- Various screws and connectors

# LEARN & PLAY

## TURN PLAYTIME INTO LEARNING!



**COORDINATION**  
IMPROVES MIND-BODY  
CONTROL

**MOTOR SKILLS**  
BUILDS HANDS-ON  
ABILITIES



**CREATIVITY**  
ENCOURAGES PROBLEM-  
SOLVING



Image: The three distinct vehicle models that can be assembled from the set, promoting learning and play.

## SETUP

### Battery Installation

The main vehicle chassis and the drill/remote control unit require batteries. Ensure batteries are inserted with correct polarity (+/-).

- **Vehicle Chassis:** Requires 2 AA batteries (not included). Locate the battery compartment on the underside of the chassis. Use a small screwdriver to open the compartment, insert the batteries, and secure the cover.
- **Drill/Remote Control Unit:** Requires batteries (typically 2 AA or AAA, not included). Locate the battery compartment, insert batteries, and secure the cover.



## PRODUCT DIMENSIONS

Image: The dump truck model, illustrating its dimensions and the separate remote control unit, which also functions as the drill.

### OPERATING INSTRUCTIONS

#### Assembly and Disassembly

The core feature of this toy is its ability to be assembled and disassembled. Use the included battery-powered drill or the manual screwdriver to attach and remove parts. The drill unit can be inserted into the vehicle chassis to power it for remote control, or used separately as a drill for assembly.

- **To Assemble:** Align the desired vehicle parts (e.g., dump bed, cement mixer, crane arm) with the main chassis. Use the drill or manual screwdriver to secure the screws into the designated holes. Ensure all connections are firm.
- **To Disassemble:** Use the drill or manual screwdriver in reverse mode (or unscrew manually) to remove the screws and detach the vehicle parts. This allows for easy transformation between the three models.

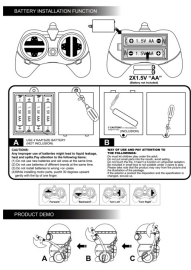



# DISMOUNT AND DIY FUN



Image: A child actively engaging with the toy, demonstrating the

## Related Documents - DIY100-200-300

	<p><a href="#">Top Race RC Robot User Manual: Battery Installation &amp; Operation</a></p> <p>Comprehensive guide for the Top Race RC Robot (Model TOPR-000301), covering battery installation, safety precautions, usage instructions, and FCC compliance information.</p>
	<p><a href="#">Top Race TR-113S Radio Control Front Loader Tractor - User Manual and Specifications</a></p> <p>Comprehensive guide for the Top Race TR-113S 5-channel radio control front loader tractor, including operation, safety warnings, battery installation, and regulatory compliance information.</p>



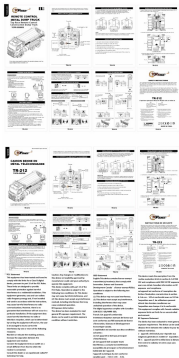
### [Top Race 1330 RC Croc Boat User Manual and Safety Guide](#)

Comprehensive user manual for the Top Race 1330 RC Croc Boat, covering setup, operation, maintenance, safety warnings, and FCC compliance. Features detailed instructions and descriptions of components.



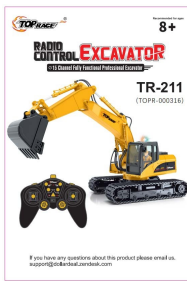
### [Top Race Excavator TR-211 User Manual](#)

User manual for the Top Race Excavator TR-211, detailing assembly, operation, and maintenance instructions for this remote-controlled construction toy.



### [Top Race TR-212 Remote Control Metal Dump Truck - User Manual](#)

Comprehensive user manual for the Top Race TR-212 remote control metal dump truck, including operating instructions, safety guidelines, battery charging, and regulatory compliance information.



### [Top Race TR-211 Excavator User Manual](#)

This manual provides instructions for the Top Race TR-211 15-Channel Fully Functional Professional Excavator, including battery installation, charging, pairing, operation, and safety guidelines.