

## Wolf CGB-2K-20

# WOLF ComfortLine CGB-2K-20 Gas Condensing Combi Boiler 20 kW User Manual

Model: CGB-2K-20 | Article Number: 8615011

## 1. INTRODUCTION AND OVERVIEW

This manual provides essential information for the safe and efficient operation, installation, and maintenance of your WOLF ComfortLine CGB-2K-20 Gas Condensing Combi Boiler. Please read these instructions carefully before installation or use and keep them for future reference. This appliance is designed to provide both heating and domestic hot water for residential applications.

## 2. SAFETY INFORMATION

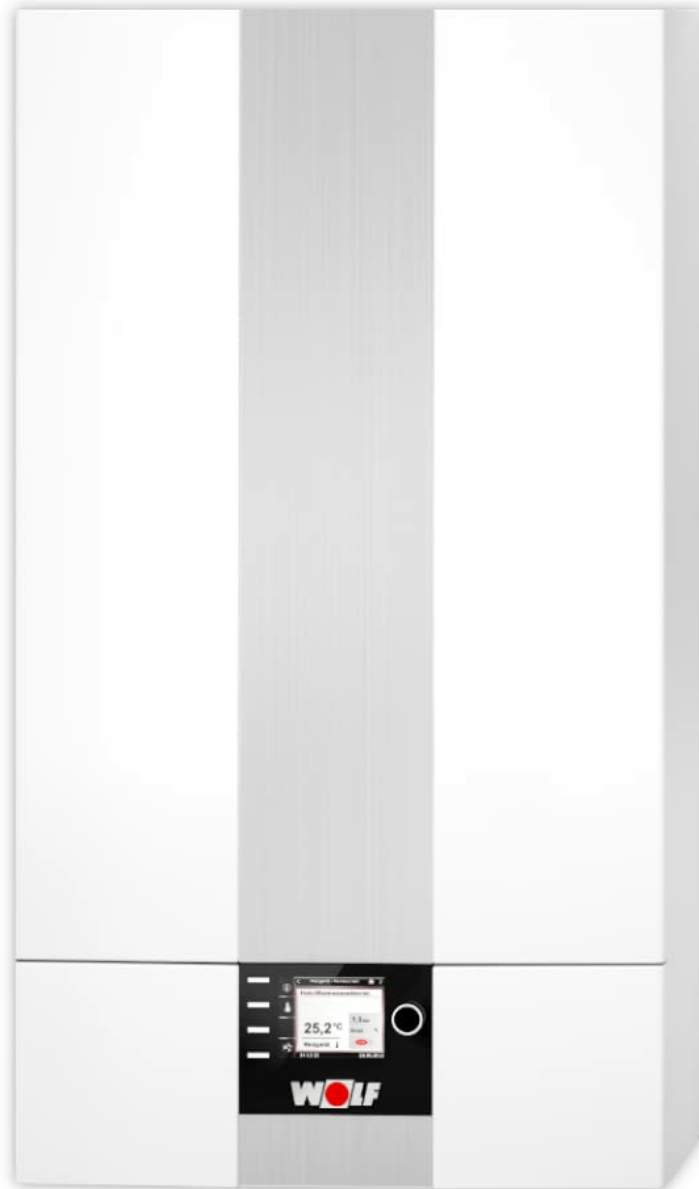
**Important Safety Instructions:** Adherence to these safety guidelines is crucial for preventing accidents and ensuring the longevity of your appliance.

- Installation, maintenance, and repair must only be carried out by a qualified and authorized professional in accordance with all local and national regulations.
- Do not attempt to modify the appliance or its components. Unauthorized modifications can lead to dangerous situations and void the warranty.
- Ensure adequate ventilation in the installation area to prevent the accumulation of harmful gases.
- In case of gas odor, immediately shut off the gas supply at the main valve, open windows and doors to ventilate the area, and contact a qualified technician or your gas provider. Do not operate electrical switches or use open flames.
- Keep flammable materials, liquids, and aerosols away from the appliance.
- Regular inspections and maintenance by a professional are crucial for safe and efficient operation and to identify potential issues before they become serious.
- Do not block any ventilation openings on or near the appliance.

## 3. PRODUCT DESCRIPTION AND FEATURES

The WOLF ComfortLine CGB-2K-20 is a highly efficient and modern gas condensing combi boiler designed for both central heating and instantaneous domestic hot water preparation. Its advanced condensing technology optimally utilizes gas and recovers residual energy from exhaust gases, leading to significant environmental protection and energy savings. This wall-mounted unit is suitable for single and multi-family homes, making it ideal for both new constructions and renovation

projects.



*Figure 1: Internal view of the WOLF ComfortLine CGB-2K-20 boiler. This image illustrates the compact arrangement of the burner, heat exchanger, and other essential components within the unit.*

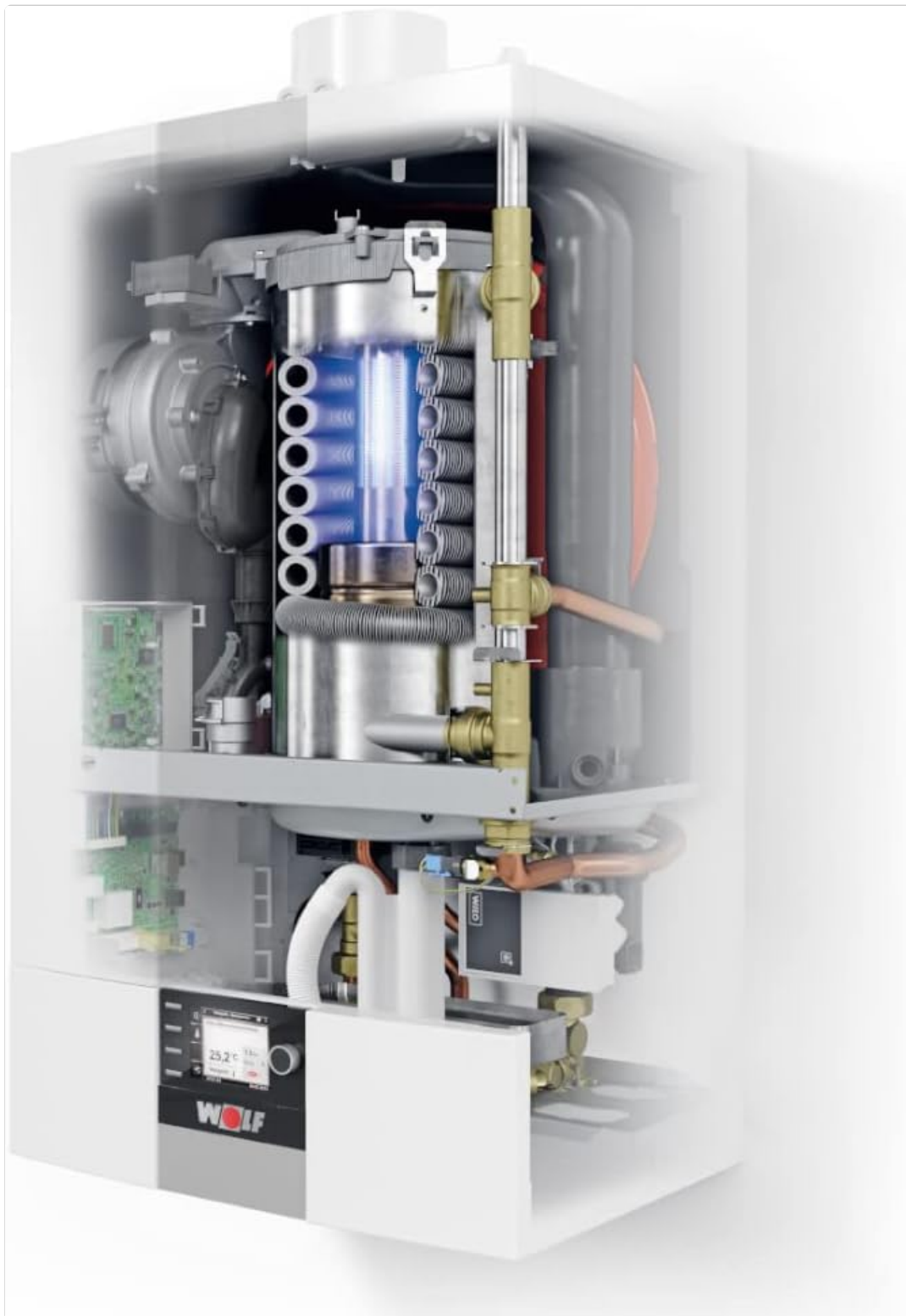
#### **Key Features:**

- **Efficient Condensing Technology:** Maximizes energy utilization and heat recovery from exhaust gases, resulting in lower fuel consumption and reduced emissions.
- **Dual Functionality:** Provides both central heating for your home and instant domestic hot water on demand, eliminating the need for a separate hot water tank in many cases.
- **Compact, Space-Saving Design:** The wall-mounted unit is designed to fit into smaller spaces, making it suitable for various installation environments.
- **Smart Control Compatibility:** Can be conveniently operated and monitored via the WOLF BM-2 operating module or directly through the WOLF Smart Set app, offering intuitive control over your heating system.
- **Precise Flow Control:** Ensures a constant hot water tap temperature, providing comfort and reliability.
- **Durable Heat Exchanger:** Features an integrated stainless steel heat exchanger that complies with European directives DIN EN 483 and DIN EN 12828, ensuring long-term performance and corrosion resistance.

## 4. SETUP AND INSTALLATION

---

The WOLF ComfortLine CGB-2K-20 boiler must be installed by a certified heating engineer in strict accordance with all local and national building codes, gas safety regulations, and the provided specialist installation manual. Improper installation can lead to serious hazards and will void the product warranty.



*Figure 2: Example of the WOLF ComfortLine CGB-2K-20 boiler installed in a residential setting. The compact design allows for discreet wall mounting.*



*Figure 3: Another view of the WOLF ComfortLine CGB-2K-20 boiler installed, demonstrating its minimal footprint and aesthetic integration.*

**General Installation Steps (for qualified professionals):**

1. **Site Selection:** Choose an appropriate location for wall mounting, ensuring sufficient clearance for maintenance and ventilation.
2. **Mounting:** Securely attach the provided mounting bracket to the wall and hang the boiler.
3. **Gas Connection:** Connect the gas supply line to the boiler's gas inlet. A gas ball valve with fire protection device must be installed upstream.
4. **Water Connections:** Connect the heating flow and return pipes, as well as the cold and hot domestic water lines, using the provided connection angles. Install maintenance valves for isolation.
5. **Flue Gas System:** Install the appropriate air/exhaust accessories according to the specific planning instructions and local regulations for flue gas discharge.
6. **Condensate Drain:** Connect the condensate drain funnel with a hose holder to a suitable drainage system.
7. **Electrical Connection:** Connect the boiler to the electrical supply as per wiring diagrams in the specialist manual.
8. **Control System Integration:** Install and connect the chosen control system, such as the BM-2 operating module or AM

display module, for room or weather-compensated control.

9. **Safety Devices:** Ensure all required safety devices, including the heating side safety valve and safety group, are correctly installed and commissioned.
10. **Commissioning:** Perform a thorough commissioning process, including leak tests, functional checks, and flue gas analysis, as detailed in the commissioning checklist.

## 5. OPERATING INSTRUCTIONS

---

Your WOLF ComfortLine CGB-2K-20 boiler is designed for user-friendly operation. It can be controlled via the WOLF BM-2 operating module or the Smart Set app for convenient and intuitive management of your heating and hot water system.

### Basic Operation:

- **Power On/Off:** Use the main power switch on the unit or the control module to turn the boiler on or off. Ensure the boiler is always powered on during cold periods to prevent freezing.
- **Heating Mode:** Set your desired room temperature or heating schedule using the control module. The boiler will automatically adjust its output to maintain comfort efficiently.
- **Hot Water Mode:** The combi boiler provides hot water on demand. Ensure the hot water temperature setting on the control module is appropriate for your needs. The precise flow control ensures a consistent temperature.
- **System Monitoring:** The control module or app provides real-time information on system status, temperatures, and any potential error messages. Familiarize yourself with these indicators.
- **Adjusting Settings:** Consult the separate user manual for the BM-2 operating module or the Smart Set app for detailed instructions on adjusting heating programs, hot water temperatures, and other advanced settings.

## 6. MAINTENANCE

---

Regular maintenance is essential to ensure the long-term efficiency, safety, and reliability of your WOLF ComfortLine CGB-2K-20 boiler. Neglecting maintenance can lead to reduced performance, increased energy consumption, and potential safety hazards.

### Recommended Maintenance Schedule:

- **Annual Professional Service:** Have the boiler inspected and serviced annually by a qualified heating engineer. This service typically includes:
  - Cleaning of the burner and heat exchanger.
  - Checking and adjusting gas pressure.
  - Inspecting all safety devices.
  - Checking the flue gas system for blockages or leaks.
  - Verifying the proper operation of controls and sensors.
  - Checking system water pressure and topping up if necessary.
- **User Checks (Monthly/Quarterly):**
  - **Condensate Drain:** Periodically check and clean the condensate drain system to prevent blockages. Ensure the condensate trap is filled with water.
  - **Water Pressure:** Monitor the system water pressure on the boiler's display or control module. If it falls below the recommended range (typically 1.0-1.5 bar when cold), top up the system as per the specialist manual or contact your installer.
  - **Visual Inspection:** Regularly check the appliance for any visible signs of damage, leaks, or unusual noises. Report any concerns to a qualified technician immediately.

A dedicated maintenance instruction manual is included with the product for detailed procedures and specific recommendations.

## 7. TROUBLESHOOTING

If your WOLF ComfortLine CGB-2K-20 boiler is not functioning correctly, consult the following basic troubleshooting steps. For complex issues or if the problem persists, always contact a qualified service technician. **Do not attempt repairs yourself.**

**Common Issues and Solutions:**

- **No Heating or Hot Water:**
  - **Check Power:** Ensure the boiler is powered on at the main switch and that there are no tripped circuit breakers.
  - **Check Gas Supply:** Verify that the main gas valve to the property and the isolation valve to the boiler are open.
  - **Thermostat/Control Settings:** Confirm that the thermostat or control module settings are correctly set for heating and hot water demand. Ensure the desired temperature is higher than the current room temperature.
  - **System Water Pressure:** Check the system water pressure on the boiler's display or control module. If it is too low, the boiler may not operate. Refer to the maintenance section for topping up instructions.
  - **Frost Protection:** During cold weather, ensure the boiler's frost protection is active or the system is adequately protected.
- **Error Codes Displayed:**
  - If an error code is displayed on the control module, make a note of the code. Refer to the specialist manual or contact a qualified technician, providing them with the error code for diagnosis.
- **Unusual Noises:**
  - If you hear persistent or loud unusual noises (e.g., banging, gurgling, whistling), this could indicate a problem such as air in the system or a component malfunction. Contact a service technician immediately.
- **Leakage:**
  - If you notice any water leaks from the boiler or pipework, immediately turn off the water supply to the boiler and contact a qualified technician.

**For your safety, never attempt to open the boiler casing or perform internal repairs. Always rely on certified professionals.**

## 8. SPECIFICATIONS

Detailed technical specifications for the WOLF ComfortLine CGB-2K-20 Gas Condensing Combi Boiler:

Attribute	Value
Manufacturer	Wolf
Model	ComfortLine CGB-2K-20
Article Number	8615011
Product Dimensions (L x W x H)	37.8 x 44 x 79 cm
Weight	33 kg (approx. 72.75 lbs)
Color	White
Nominal Power Output	20 kW
ASIN	B07S1TDRDF

Attribute	Value
First Available Date	2 November 2021

## 9. INCLUDED COMPONENTS

---

The following components are typically included with your WOLF ComfortLine CGB-2K-20 boiler upon delivery:

- 1 × Gas burner (connectable, covered)
- 1 × Mounting bracket for wall installation
- 1 × Instruction manual for specialists
- 1 × User manual (this document)
- 1 × Maintenance instructions
- 1 × Commissioning checklist
- 1 × Sticker "G31/G30" (for transition to liquid gas)
- 2 × Connection angles for cold/hot water

**Note:** Certain essential accessories such as air/exhaust components, room or weather-compensated control modules (e.g., BM-2 or AM), condensate drain funnel with hose holder, maintenance valves for heating flow and return, gas ball valve with fire protection, safety valve for the heating side, and a safety group are typically required for a complete installation but may be sold separately or supplied by your installer.

## 10. WARRANTY AND SUPPORT

---

**Warranty Information:** For specific warranty terms and conditions, please refer to the warranty documentation provided by your installer or included with your product. Warranty coverage typically requires professional installation and annual maintenance by a qualified technician.

**Customer Support:** If you require technical assistance, spare parts, or professional service for your WOLF ComfortLine CGB-2K-20 boiler, please contact your authorized WOLF dealer or a qualified heating technician. When contacting support, ensure you have your product model (CGB-2K-20) and article number (8615011) available to facilitate quicker assistance. You can find contact information for authorized WOLF partners on the official WOLF website.