

SONOFF T2US3C

SONOFF TX WiFi Smart Wall Switches US (T2-3 Gang, White) Instruction Manual

Brand: SONOFF | Model: T2US3C

1. PRODUCT OVERVIEW

The SONOFF TX WiFi Smart Wall Switch is designed to provide intelligent control over your home lighting. It allows for remote operation via smartphone, voice commands, and scheduled automation, enhancing convenience and energy efficiency.

Key Features:

- **Smart Remote Control:** Turn electronics on or off from anywhere using the eWeLink App (Android & iOS).
- **Touch Control Design:** Features a glass panel for easy touch control, low power loss, and long service life.
- **Hands-Free Voice Control:** Compatible with Amazon Alexa, Google Assistant, and IFTTT for convenient voice operation.
- **Timer & Schedule:** Set automated schedules for lights to turn on and off.
- **Device Sharing:** Share control of your smart switch with family members.
- **LAN Control:** Operate appliances without Wi-Fi connection (for TX series switches).



Image 1.1: The SONOFF TX WiFi Smart Wall Switch (3-Gang White) alongside its product packaging.

Your browser does not support the video tag.

Video 1.1: An overview of the SONOFF TX Smart Light Switch, highlighting its features and design.

2. WHAT'S IN THE BOX

Upon opening the package, you will find the following components:

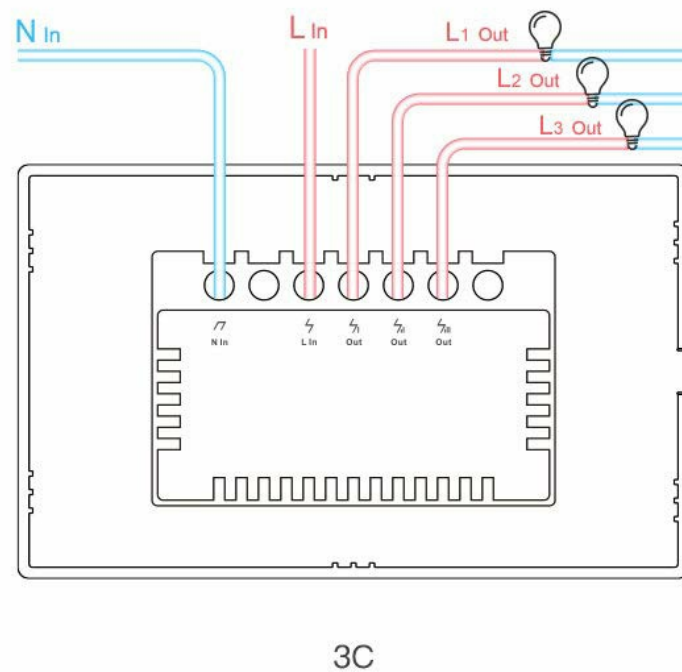
- 1 x SONOFF TX WiFi Smart Wall Switch (T2-3 Gang, White)
- 1 x User Manual
- Mounting Screws

3. SETUP AND INSTALLATION

Important Safety Note: Installation should be performed by a qualified electrician or a person with sufficient electrical knowledge. Ensure power is turned off at the circuit breaker before beginning any wiring work.

Wiring Diagram:

The SONOFF TX switch requires a neutral wire for proper operation. Below is a typical wiring diagram for the 3-gang model.



Input: AC 100–240V
Note: Neutral wire is required

Image 3.1: Detailed wiring diagram for the 3-gang smart switch, showing connections for Neutral In (N in), Live In (L in), and Live Out (L1, L2, L3 out) for each gang. A neutral wire is required.

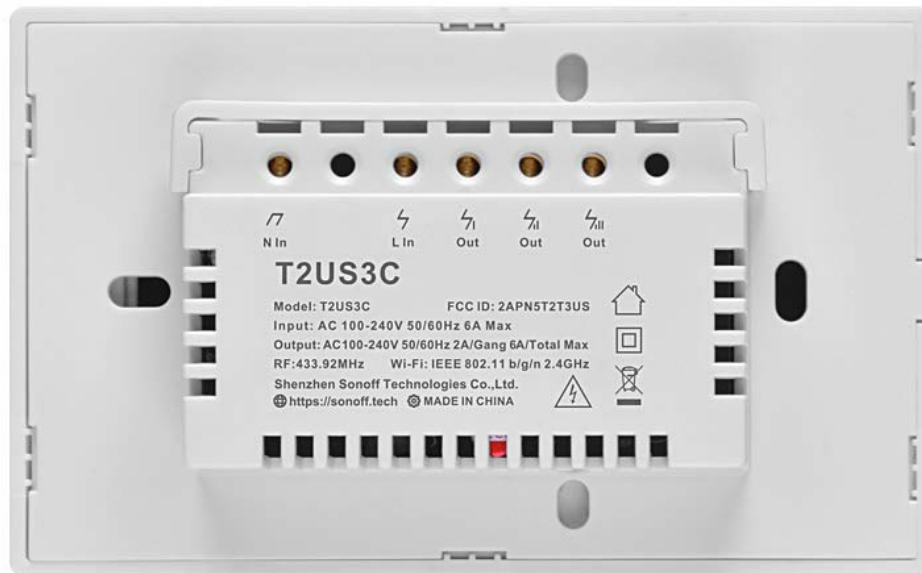


Image 3.2: Rear view of the SONOFF TX 3-gang smart switch (Model T2US3C), displaying the screw terminals for electrical connections and product information.

Ensure all connections are secure and follow local electrical codes. The switch is designed to fit standard US wall boxes.

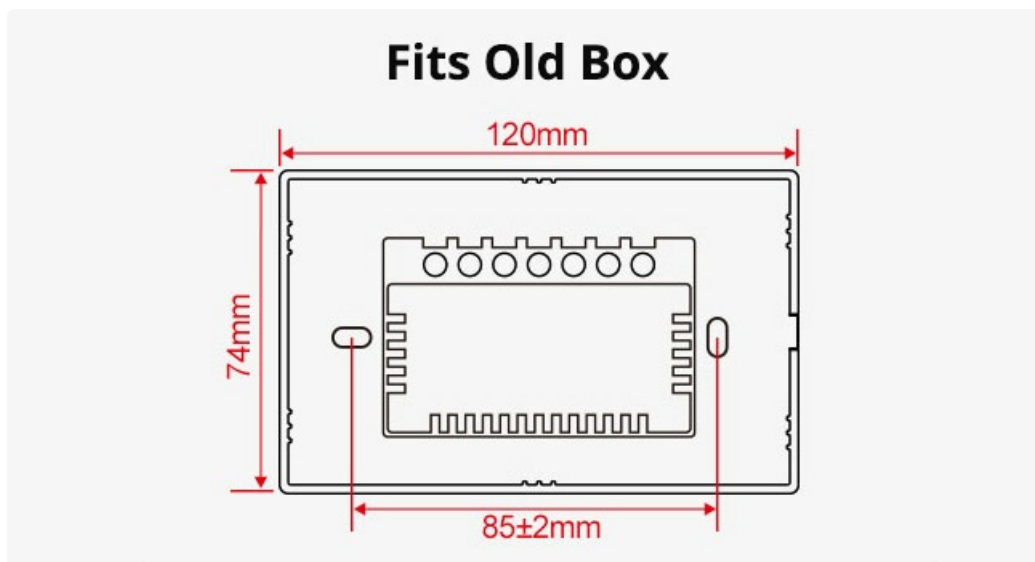


Image 3.3: Diagram illustrating the dimensions of the smart switch, confirming its compatibility with existing wall boxes (120mm x 74mm with 85±2mm mounting holes).

App Pairing Instruction:

To control your smart switch via the eWeLink app, you need to pair it with your Wi-Fi network. The switch only supports 2.4 GHz Wi-Fi networks.

1. **Install and Login:** Download and install the eWeLink Smart Home APP from your device's app store (compatible with Android & iOS). Log in or create a new account.
2. **Enter Pairing Mode:** Long press any configuration button on the smart switch for approximately 5 seconds until the Wi-Fi LED indicator changes in a cycle of two short flashes and one long flash. This indicates the device is in pairing mode.
3. **Add Device in App:** In the eWeLink app, tap the "+" icon and select "Quick Pairing".
4. **Connect to Wi-Fi:** Enter your 2.4GHz Wi-Fi password and follow the on-screen prompts. Ensure your smartphone is close to the Wi-Fi router.
5. **Discover and Add:** The app will discover and add your Wi-Fi device. Once successfully added, you can name your device and assign it to a room.

Your browser does not support the video tag.

Video 3.1: A step-by-step guide on how to pair your SONOFF TX Series WiFi Wall Switch with the eWeLink application.

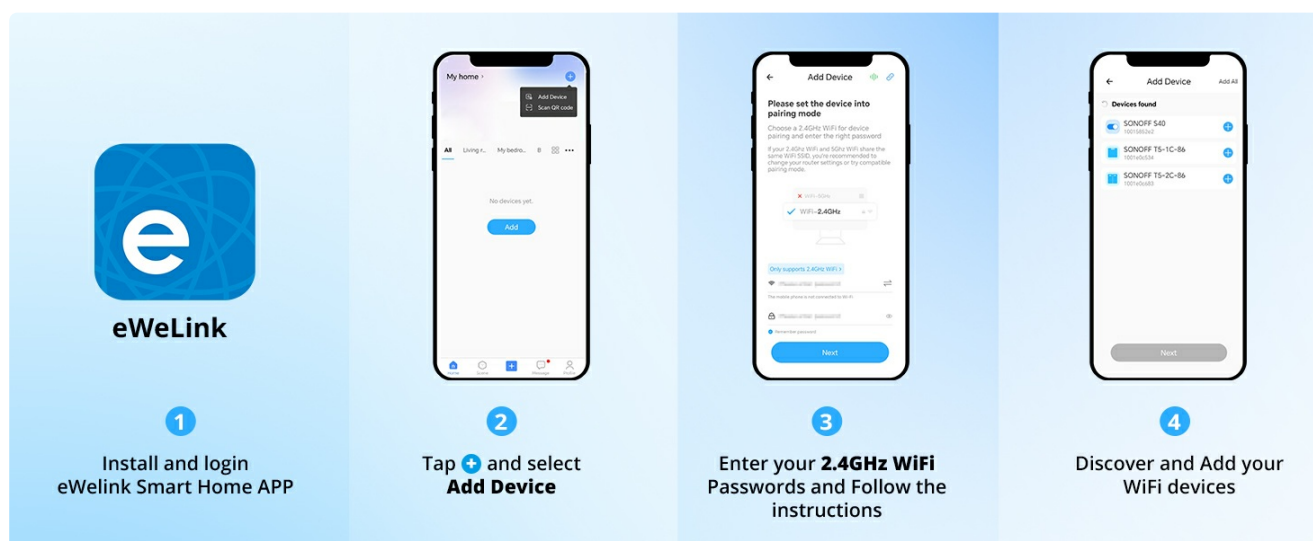


Image 3.4: Visual representation of the four-step process for installing the eWeLink app, adding a device, entering Wi-Fi credentials, and discovering/adding the smart switch.

4. OPERATION

Manual Touch Control:

The glass panel allows for direct touch control. A slight tap on the designated touch areas will toggle the connected lights on or off.

Share Control

Share control of your home appliances to your family or friends so that they can also control the devices remotely



Image 4.1: The smart switch installed on a wall, demonstrating its ability to control multiple home devices independently.

APP Remote Control:

Once paired with the eWeLink app, you can control your lights from anywhere with an internet connection.

Timer & Schedule

Set up timing schedules to turn on or off lights

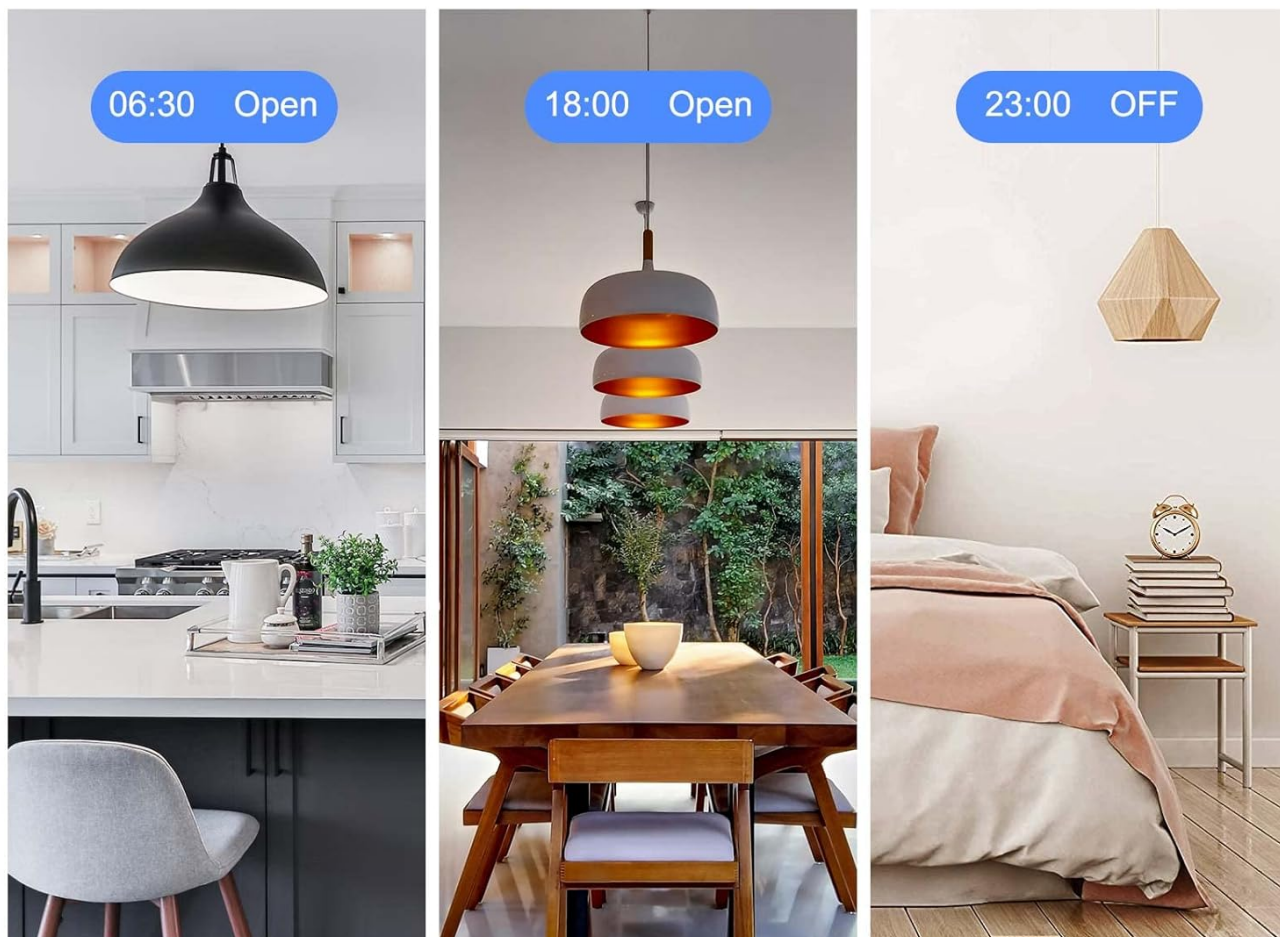


Image 4.2: A user remotely controlling lights in their home using the eWeLink app on their smartphone.

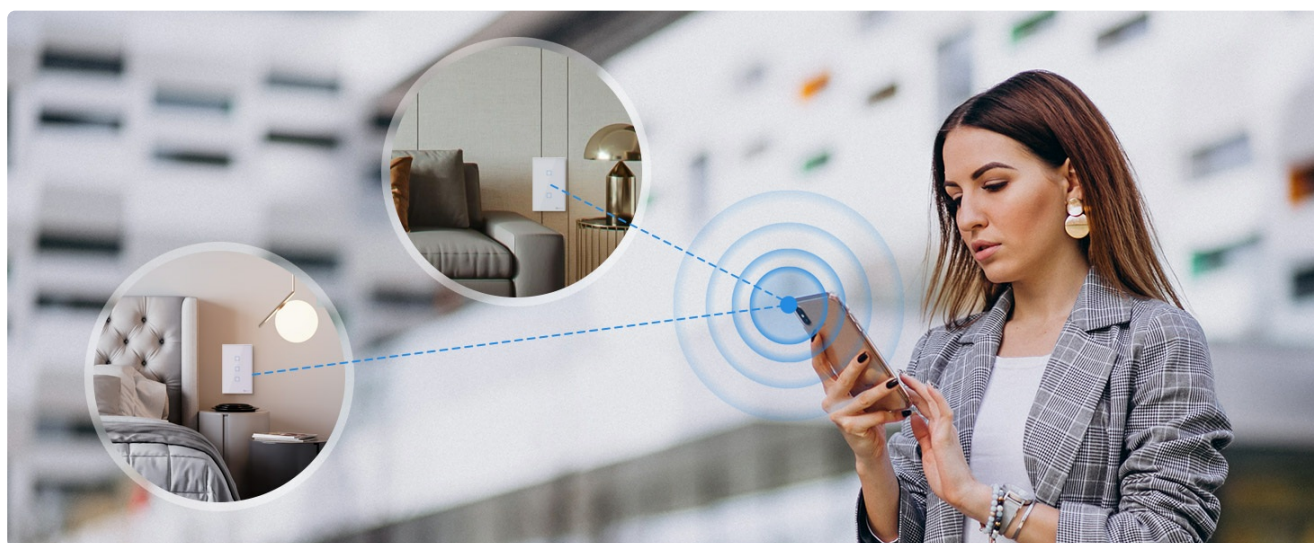


Image 4.3: A woman using her smartphone to remotely control the smart switch, illustrating the convenience of app-based control.

Voice Control:

Integrate your SONOFF TX switch with Amazon Alexa or Google Assistant for hands-free voice control.

Hands-free Voice Control

Compatible with Alexa & Google Home, the smart switch allows you to control lights on/off with your voice

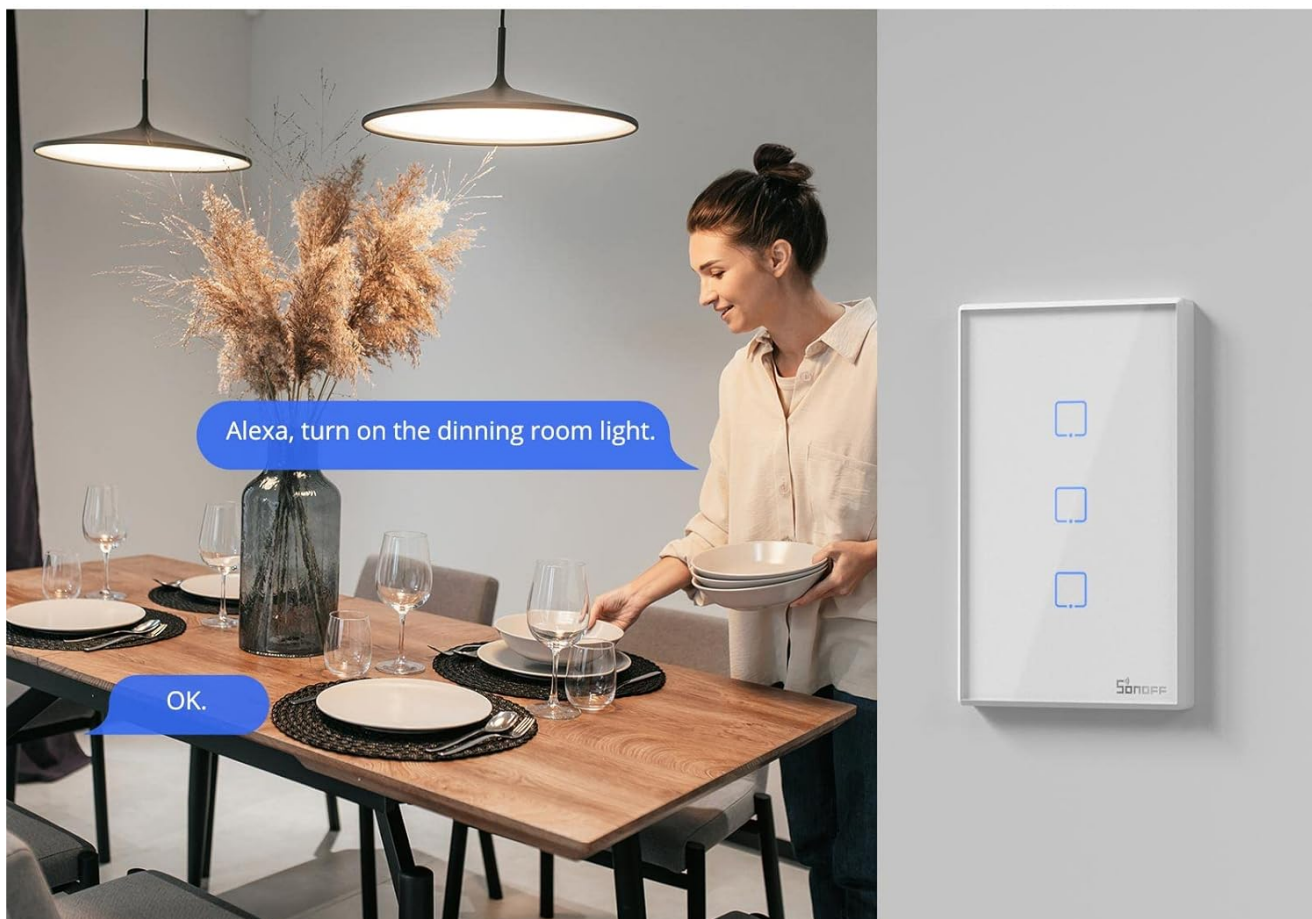


Image 4.4: A woman interacting with a voice assistant (Alexa) to control her dining room lights through the smart switch.

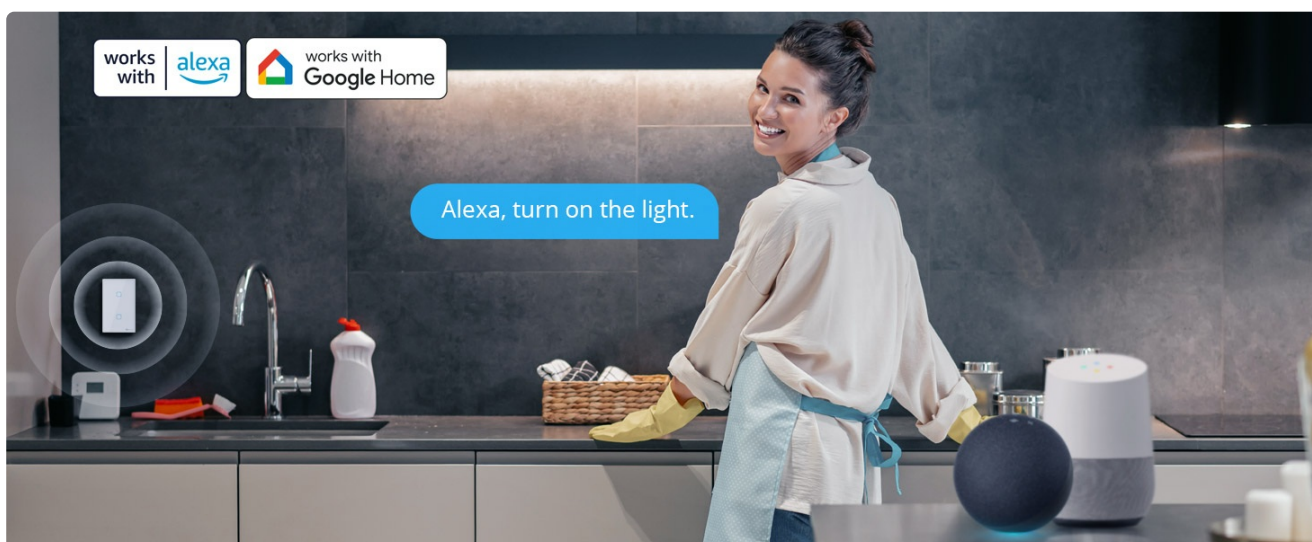


Image 4.5: A woman in a kitchen setting using a voice command to activate lighting, demonstrating seamless integration with smart

Scheduling and Timers:

Set up custom schedules and timers within the eWeLink app to automate your lighting based on your daily routine.

APP Remote Control

Just tap on eWeLink App to turn on a light anytime and anywhere.
A lighted house anticipates your arrival



Image 4.6: Examples of scheduled lighting: turning on at 06:30, turning on at 18:00, and turning off at 23:00.

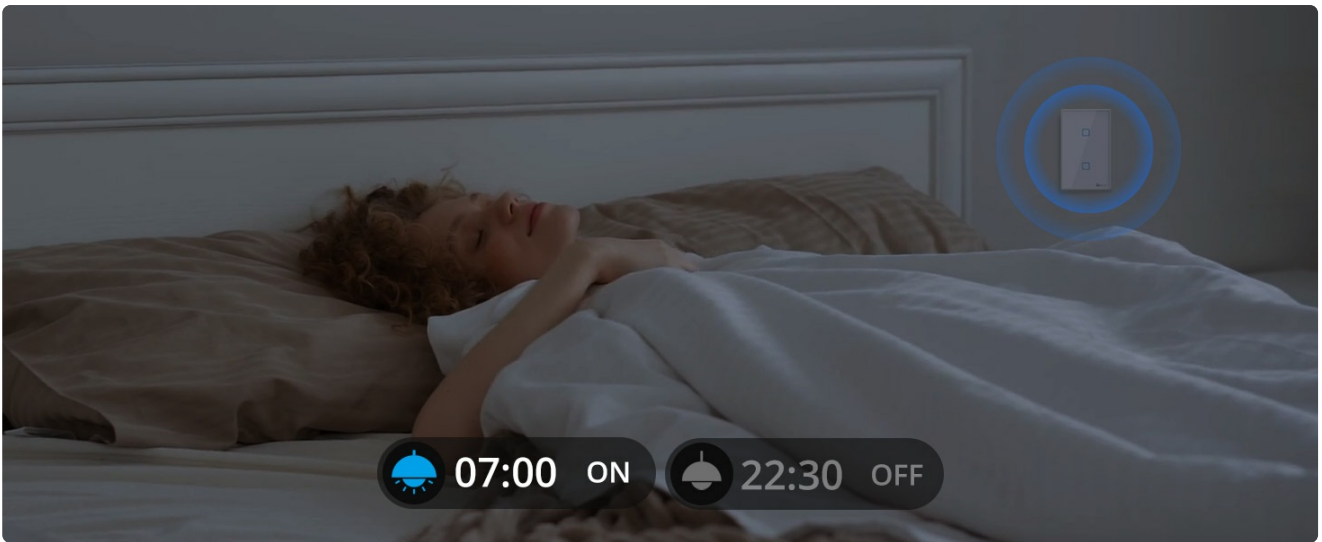


Image 4.7: Illustration of a smart switch automating lights based on a schedule, such as turning on at 7:00 AM and off at 10:30 PM, even while sleeping.

Device Sharing:

Share control of your smart switch with family members or trusted individuals through the eWeLink app, allowing multiple users to manage the devices.

Control Multiple Devices

Multiple home devices can be controlled independently
by the two or three gangs smart switch



Image 4.8: A family interacting with a smartphone, demonstrating the device sharing feature that allows multiple users to control smart home appliances.

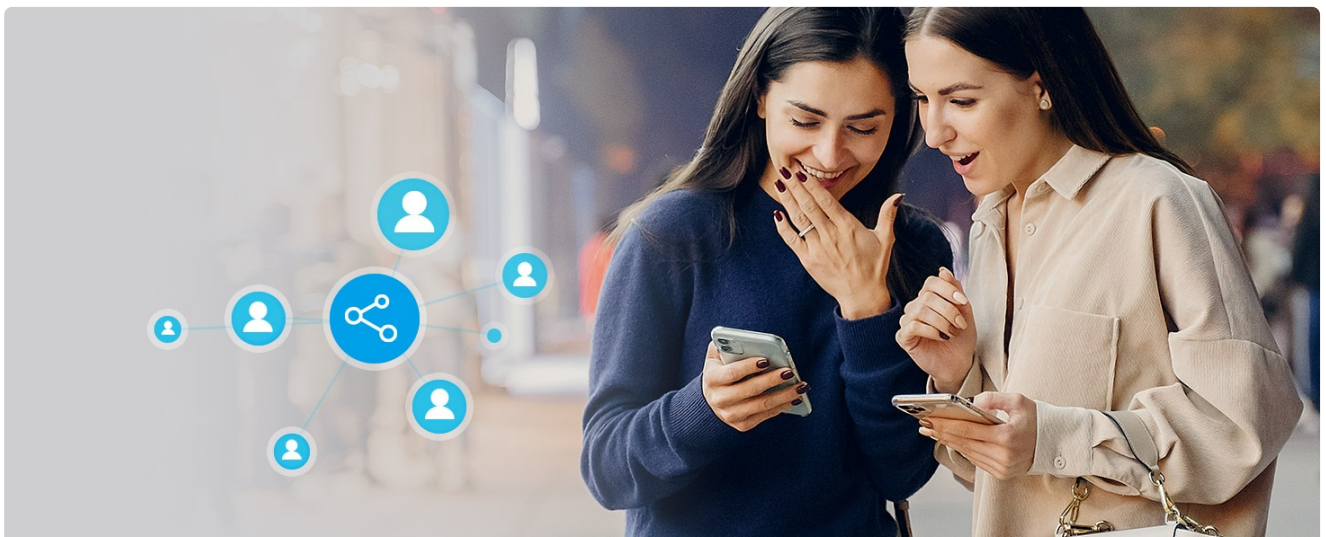


Image 4.9: Two women engaging with their smartphones, illustrating the ease of sharing control over smart devices among users.

RF Control (Optional):

For situations where a network connection is unavailable, the switch supports 433MHz RF remote control (remote sold separately).

RF Control

An alternative control when there is no available network for your smart phone



Image 4.10: The smart switch being operated by a dedicated RF remote control, providing an alternative control method when Wi-Fi is not available.

5. MAINTENANCE

To ensure the longevity and optimal performance of your SONOFF TX Smart Wall Switch, follow these maintenance guidelines:

- **Cleaning:** The toughened glass panel is easy to clean. Use a soft, damp cloth to wipe the surface. Avoid abrasive cleaners or harsh chemicals that could damage the finish.
- **Firmware Updates:** Periodically check the eWeLink app for available firmware updates. Keeping your

device's firmware up-to-date ensures you have the latest features and security enhancements.

- **Environmental Conditions:** Ensure the switch is installed in an environment within its specified operating temperature and humidity ranges to prevent damage.

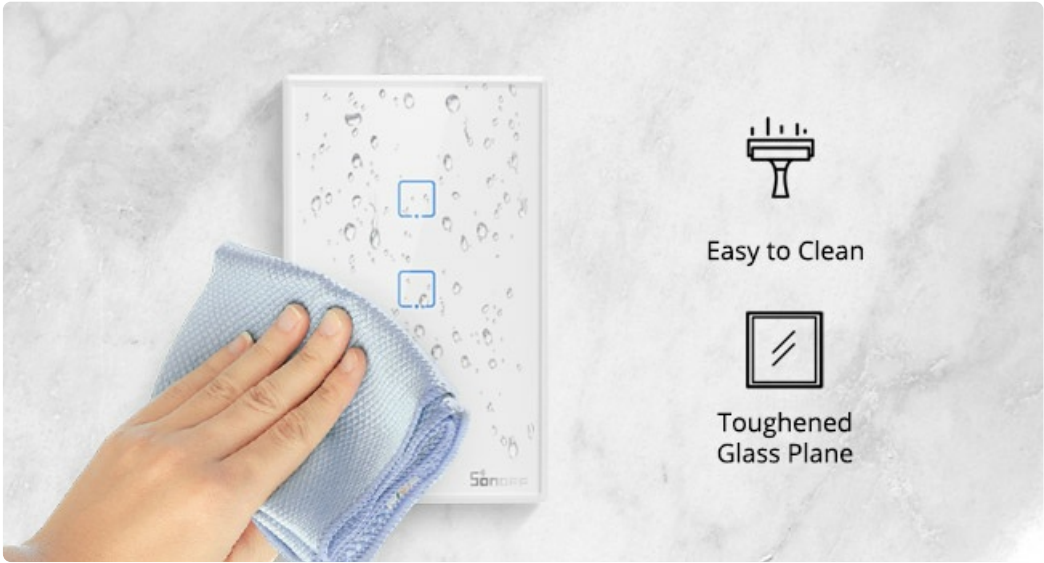


Image 5.1: A hand wiping the surface of the smart switch, highlighting its easy-to-clean toughened glass panel.

6. TROUBLESHOOTING

If you encounter issues with your SONOFF TX Smart Wall Switch, refer to the following common problems and solutions:

| Problem | Possible Cause / Solution |
|-------------------------------|---|
| Device not pairing with app. | <ul style="list-style-type: none">◦ Ensure your Wi-Fi network is 2.4 GHz. The switch does not support 5 GHz networks.◦ Verify the switch is in pairing mode (Wi-Fi LED indicator flashing two short, one long).◦ Move your smartphone closer to the switch and Wi-Fi router during pairing.◦ Check Wi-Fi password for accuracy.◦ Try "Compatible Pairing Mode" in the eWeLink app if "Quick Pairing" fails. |
| Switch is offline in the app. | <ul style="list-style-type: none">◦ Check your Wi-Fi router and internet connection.◦ Ensure the switch has stable power.◦ Restart the switch by turning off and on the circuit breaker.◦ If Wi-Fi signal is weak, consider a Wi-Fi extender. |

| Problem | Possible Cause / Solution |
|-------------------------------------|---|
| Lights do not respond to touch/app. | <ul style="list-style-type: none"> ◦ Verify proper wiring, especially the neutral wire connection. ◦ Ensure the face plate is correctly clipped and flat against the switch plate for optimal touch response. ◦ Check if the device is online in the eWeLink app. ◦ Confirm the connected light bulb is functional. |
| Voice control not working. | <ul style="list-style-type: none"> ◦ Ensure your smart assistant (Alexa/Google Home) is properly linked to your eWeLink account. ◦ Check if the device name in eWeLink matches the name used for voice commands. ◦ Verify your smart assistant device has an active internet connection. |

For further assistance, please contact SONOFF customer support.

7. TECHNICAL SPECIFICATIONS

| Specification | Detail |
|----------------------|---------------------------------------|
| Model Number | T2US3C |
| Product Dimensions | 4.72 x 2.91 x 1.5 inches; 7.05 ounces |
| Operation Mode | Automatically, Off, Smart Switch |
| Current Rating | 6 Amps |
| Operating Voltage | 120 Volts |
| Contact Type | Normally Open |
| Connector Type | Crimp |
| Terminal | Screw |
| Circuit Type | 1-way |
| Actuator Type | smart touch |
| Manufacturer | SONOFF |
| First Available Date | May 21, 2019 |


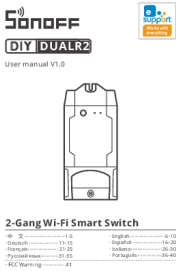
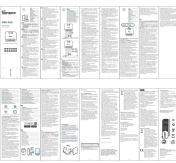
8. WARRANTY AND SUPPORT

SONOFF products are designed and manufactured to the highest quality standards. For information regarding warranty coverage and terms, please refer to the warranty card included with your product or visit the official SONOFF website.

For technical support, troubleshooting assistance, or to explore other SONOFF products, please visit the [SONOFF Store on Amazon](#) or their official support channels.

© 2024 SONOFF. All rights reserved.

Related Documents - T2US3C

| | |
|---|--|
|  | <p>SONOFF 4CHPRO R3 User Manual: 4-Gang WiFi Smart Switch with RF Control</p> <p>Comprehensive user manual for the SONOFF 4CHPRO R3 4-Gang WiFi Smart Switch. Covers installation, wiring, pairing modes (Quick Pairing, Compatible Pairing), specifications, features, troubleshooting, and FCC compliance.</p> |
|  | <p>SONOFF DUALR2 2-Gang Wi-Fi Smart Switch User Manual</p> <p>User manual for the SONOFF DUALR2 2-Gang Wi-Fi Smart Switch. Learn how to install, set up, and use its features like remote control, scheduling, and device sharing via the eWeLink app.</p> |
|  | <p>SONOFF MINI DUO 2-Gang Matter Over WiFi Smart Switch Quick Guide</p> <p>Quick start guide for the SONOFF MINI DUO, a 2-Gang Matter Over WiFi Smart Switch. Includes wiring instructions, pairing mode, app integration, technical specifications, and safety information.</p> |



Comprehensive user manual for the SONOFF DUALR3 & Lite 2-Gang Wi-Fi Smart Switch. Covers product introduction, features, detailed wiring instructions for various modes (motor, light fixtures, sensors), app setup (eWeLink), specifications, Wi-Fi indicator status, working modes, troubleshooting common problems, and compliance information.

User manual for the SONOFF MINI-2GS, a 2-Gang Matter Over WiFi Smart Switch. Learn about installation, wiring, setup, specifications, features, and compliance information.



User manual for the SONOFF DUALR2, a 2-gang Wi-Fi smart switch. This guide covers installation, setup, features like remote control and scheduling, and troubleshooting for smart home automation.