

## Topsolar TOPSPM

# Topsolar Solar Panel Kit User Manual

Model: TOPSPM

Brand: Topsolar

## 1. PRODUCT OVERVIEW

---

The Topsolar 20W 12V Monocrystalline Solar Panel Kit is designed for off-grid 12-volt battery charging systems and various DC applications. It is ideal for maintaining 12-volt batteries in vehicles such as RVs, marine boats, and cars, as well as for cabins, battery-operated gates, backup power, and remote power usage.

This kit provides a reliable and efficient solution for harnessing solar energy.

### Package Contents:

- 1 x 20 Watt Monocrystalline Solar Panel
- 1 x 10A 12V/24V Solar Charge Controller
- 1 x 6.5ft Extension Cable with Alligator Clips
- 1 x 6.5ft Extension Cable with O-Ring Terminal



Image: All components included in the Topsolar 20W Solar Panel Kit.

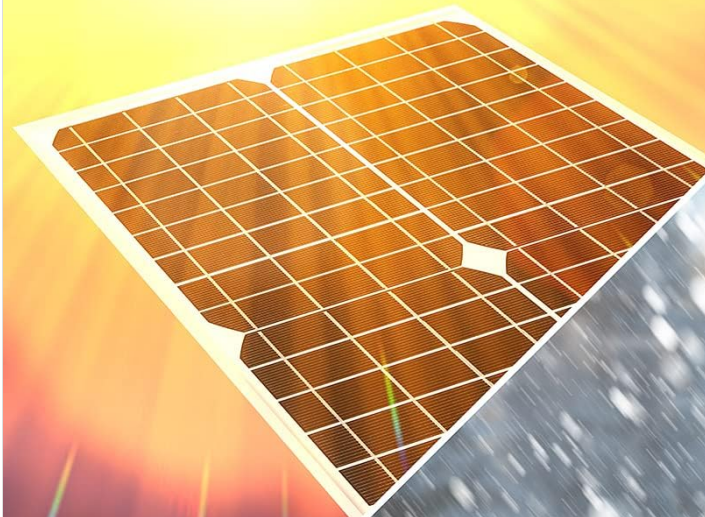
## 2. KEY FEATURES

- **Versatile Application:** Perfect for various off-grid 12V battery charging systems and DC applications, including RVs, marine vessels, cars, cabins, and remote power setups.
- **Complete Kit:** Includes a 20W solar panel, a 10A solar charge controller, and two 6.5ft extension cables (one with alligator clips, one with O-ring terminals) for easy connection.
- **Advanced Charge Controller:** The 10A solar charge controller provides comprehensive protection against overcharge, overvoltage, discharge, short circuit, and reversed polarity, ensuring battery safety.
- **Portable and Easy Installation:** Small in size and lightweight, making it convenient for camping and other outdoor activities. Pre-drilled holes on the panel's back facilitate quick mounting and securing.
- **Durable Construction:** Built with strong tempered glass and a robust aluminum frame for enhanced durability and longevity.
- **High Efficiency:** Designed for high efficiency, ensuring optimal power generation from sunlight.
- **Weather Resistance:** Engineered to withstand various weather conditions, including hail impact (25mm/23m/s) and static load (2400Pa).

# High Efficiency

Topsolar Solar Panel  24%

Other Solar Panel  19%



Max.static load: 2400Pa

Max.hailstone impact(diameter/velocity): 25mm/23m/s

## Weather Resistance

Image: Illustration highlighting the high efficiency and weather resistance of Topsolar solar panels.

### 3. SETUP INSTRUCTIONS

Follow these steps for proper setup of your Topsolar Solar Panel Kit. Ensure all connections are secure before operation.

1. **Connect the Charge Controller to the Battery:**First, connect the positive and negative terminals of the 10A solar charge controller to your 12V battery. Ensure correct polarity. The charge controller display should light up.
2. **Connect the Solar Panel to the Charge Controller:**Next, connect the solar panel's positive and negative output cables to the corresponding solar input terminals on the charge controller.
3. **Connect Load (Optional):** If you are connecting a DC load directly to the charge controller, connect its positive and negative terminals to the load output terminals on the controller. For AC loads, connect a power inverter to the battery (Step 3 in diagram), and then connect your AC devices to the inverter.

**Important:** Always connect the battery to the charge controller first, then the solar panel, and finally the load. Disconnect in the reverse order.



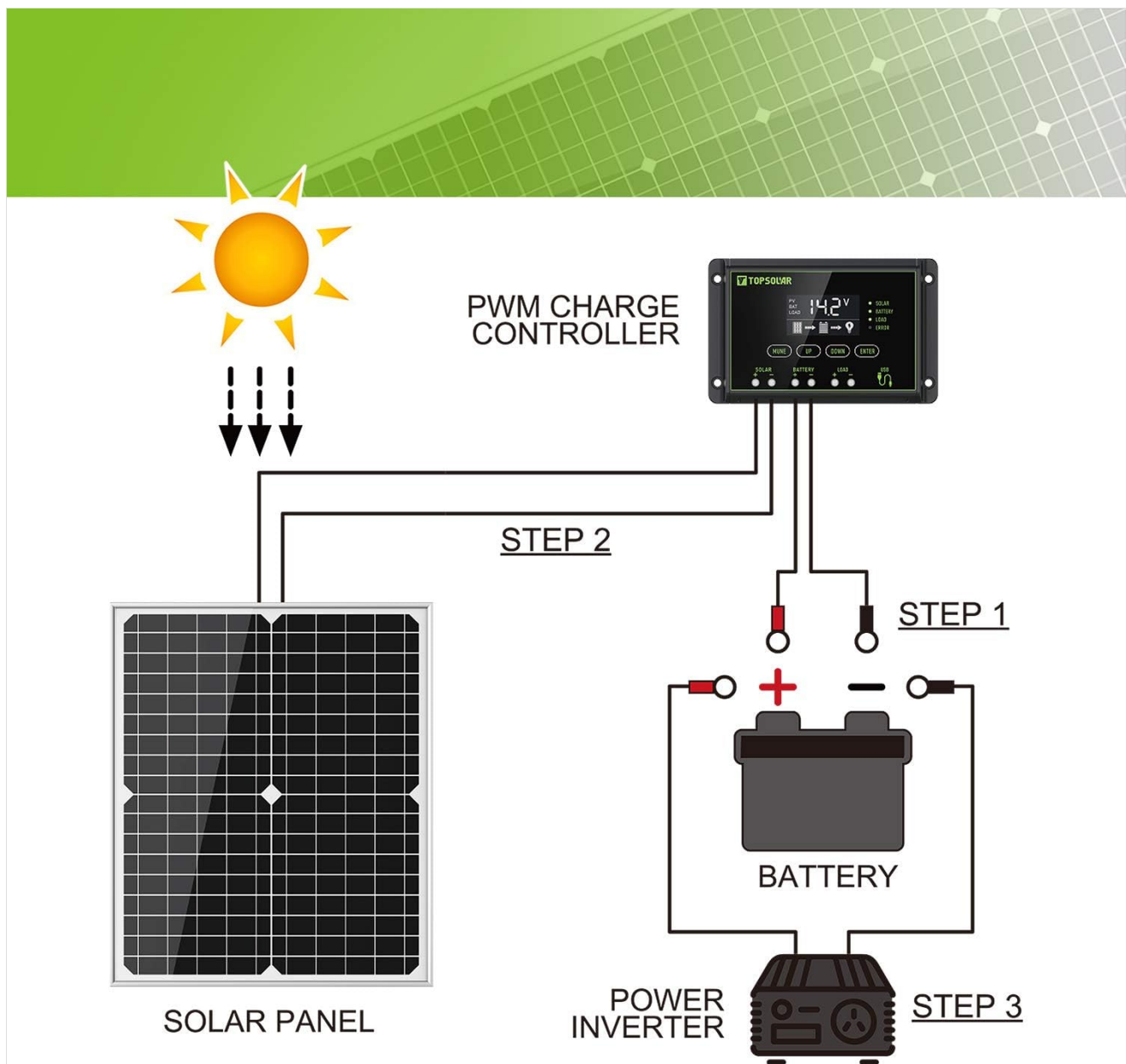


Image: Step-by-step connection diagram for the solar panel system.

## 4. OPERATING INSTRUCTIONS

Once properly connected, the solar charge controller will automatically manage the charging process. The display on the controller provides real-time information about the system's status.

### Charge Controller Display and Buttons:



Image: Detailed view of the solar charge controller.

- **Display:** Shows battery voltage, charging current, and load status.
- **Mode Button:** Cycles through different display modes and settings.
- **Up/Down Buttons:** Adjust settings when in configuration mode.
- **Enter Button:** Confirms selections.

The charge controller automatically detects 12V or 24V systems. It uses Pulse Width Modulation (PWM) technology for efficient and safe battery charging, preventing overcharging and extending battery life.

## 5. MAINTENANCE

Regular maintenance ensures optimal performance and longevity of your solar panel kit.

- **Solar Panel Cleaning:** Periodically clean the surface of the solar panel with a soft, damp cloth to remove dust, dirt, and debris. A clean panel ensures maximum sunlight absorption and efficiency.
- **Connection Inspection:** Regularly check all electrical connections (panel to controller, controller to battery, controller to load) to ensure they are tight and free from corrosion.
- **Battery Health:** Monitor your battery's health and ensure it is properly maintained according to its manufacturer's guidelines.
- **Environmental Factors:** Ensure the solar panel is not shaded by trees, buildings, or other obstructions, as shading can significantly reduce power output.

## 6. TROUBLESHOOTING

If you encounter issues with your Topsolar Solar Panel Kit, refer to the following common troubleshooting tips:

Problem	Possible Cause	Solution
---------	----------------	----------

Problem	Possible Cause	Solution
No power output from panel/controller	Loose connections, insufficient sunlight, faulty component.	Check all wiring connections. Ensure panel is in direct sunlight. Inspect cables for damage.
Battery not charging	Incorrect wiring polarity, charge controller settings, battery issues.	Verify correct positive (+) and negative (-) connections. Check charge controller display for error codes. Test battery health.
Load not receiving power	Load output disabled, overloaded circuit, faulty load device.	Check charge controller settings to ensure load output is enabled. Reduce load or use a larger inverter. Test load device separately.

If issues persist after following these steps, please contact Topsolar customer support.

## 7. SPECIFICATIONS

Attribute	Detail
Brand	Topsolar
Material	Monocrystalline Silicon
Product Dimensions	31.5"L x 15.75"W x 0.98"H
Efficiency	High efficiency
Connector Type	USB
AC Adapter Current	10 Amps
Maximum Voltage	12 Volts
Maximum Power	20 Watts
Special Feature	Short Circuit Protection
Item Weight	4.09 pounds
Manufacturer	Topsolar
Item Model Number	TOPSPM

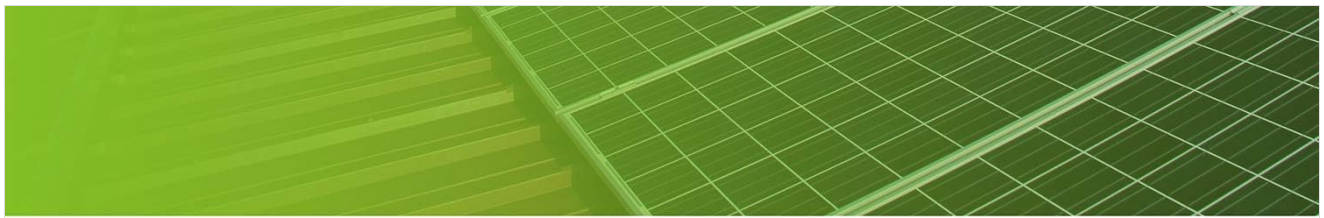


Image: Physical dimensions of the Topsolar solar panel.

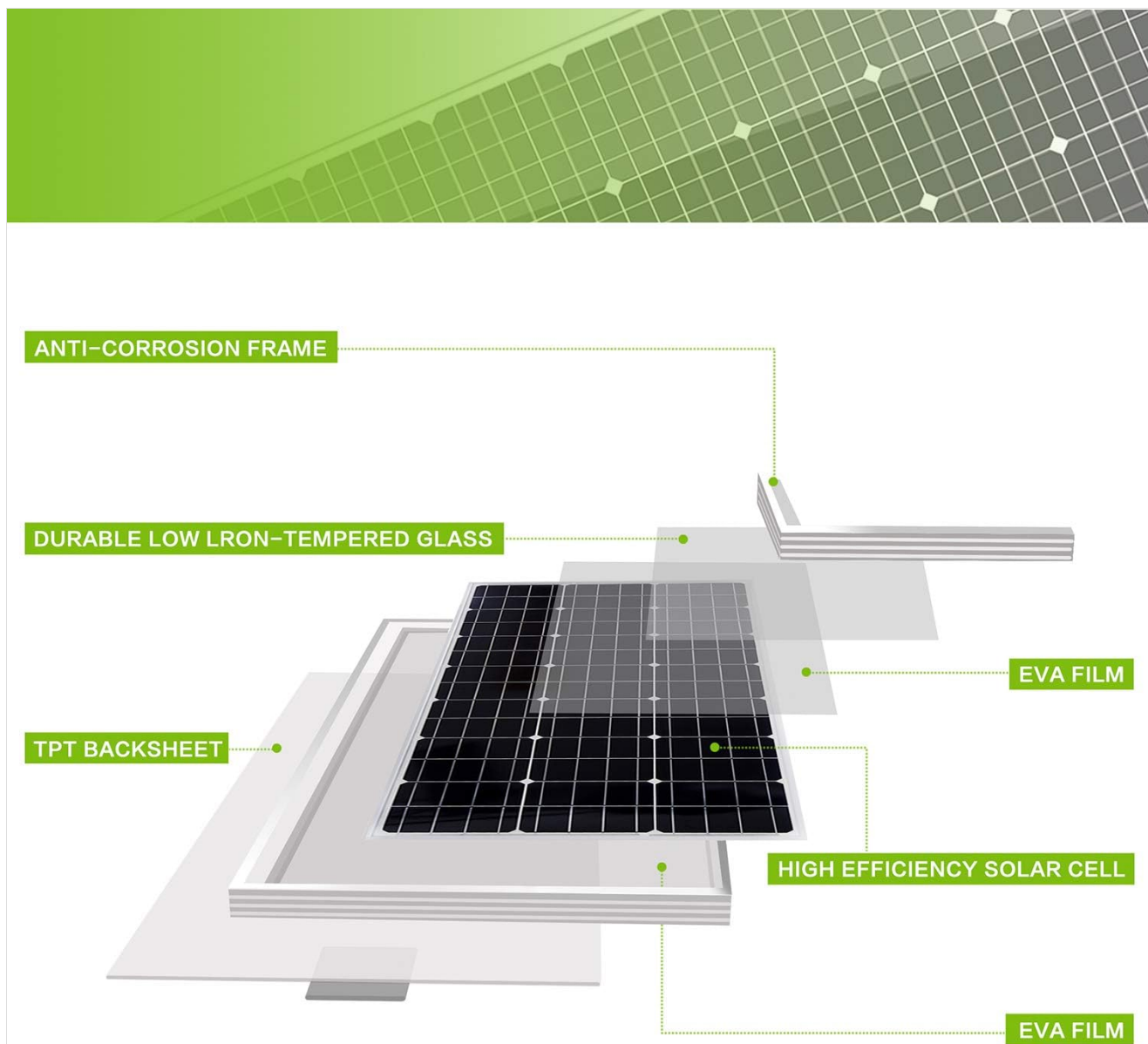


Image: Internal structure and materials of the solar panel.

## 8. WARRANTY AND SUPPORT

Topsolar provides a 12-month worry-free warranty for this product. For any questions, technical assistance, or warranty claims, please contact Topsolar customer support through the retailer's platform or the official Topsolar website.

Ensure you have your purchase details and product model number (TOPSPM) ready when contacting support.