

QIACHIP B07RYT7J8S

QIACHIP Universal WiFi Ceiling Fan Light Remote Control Kit

MODEL: B07RYT7J8S

1. Introduction

This instruction manual provides detailed guidance for the installation, setup, and operation of your QIACHIP Upgraded WiFi Universal Ceiling Fan Light Remote Control Kit. This kit is designed to enhance the functionality of your existing ceiling fan by adding remote control, smart app control, and voice control capabilities.

2. Safety Information

- Always disconnect power at the circuit breaker before installation or servicing.
- Ensure all wiring connections are secure and comply with local electrical codes.
- Do not exceed the maximum electrical ratings of the receiver.
- Keep the remote control and receiver away from water and excessive humidity.
- If you are unsure about any part of the installation process, consult a qualified electrician.

3. Package Contents

- 2 x Remote Control
- 2 x Receiver
- 2 x Remote Control Stand

4. Product Overview

The QIACHIP kit consists of a compact receiver unit that integrates into your ceiling fan's canopy and a handheld remote control. The receiver enables wireless communication for fan speed control, light on/off, and timing functions. The system also supports integration with the Smart Life app and voice assistants like



Figure 4.1: Overview of the QIACHIP Ceiling Fan Remote Control Kit components.



Ceiling Fan
Wi-Fi Driver with RF Control



QIACHIP FLCW-110V WiFi Smart Driver for LED Ceiling Fan



Remote Control



3 Fan Speeds



Timing Schedules



RF Remote Control

Directly replace your old driver, convert your traditional ceiling fan with light to a smart control fan.



Figure 4.2: Detailed view of the compact receiver unit.

5. Installation

The receiver unit (4.53 x 2.13 x 1.1 inches) is designed to fit within most standard ceiling fan canopies. Ensure your fan has sufficient space before proceeding. All wires are color-coded for straightforward connection.

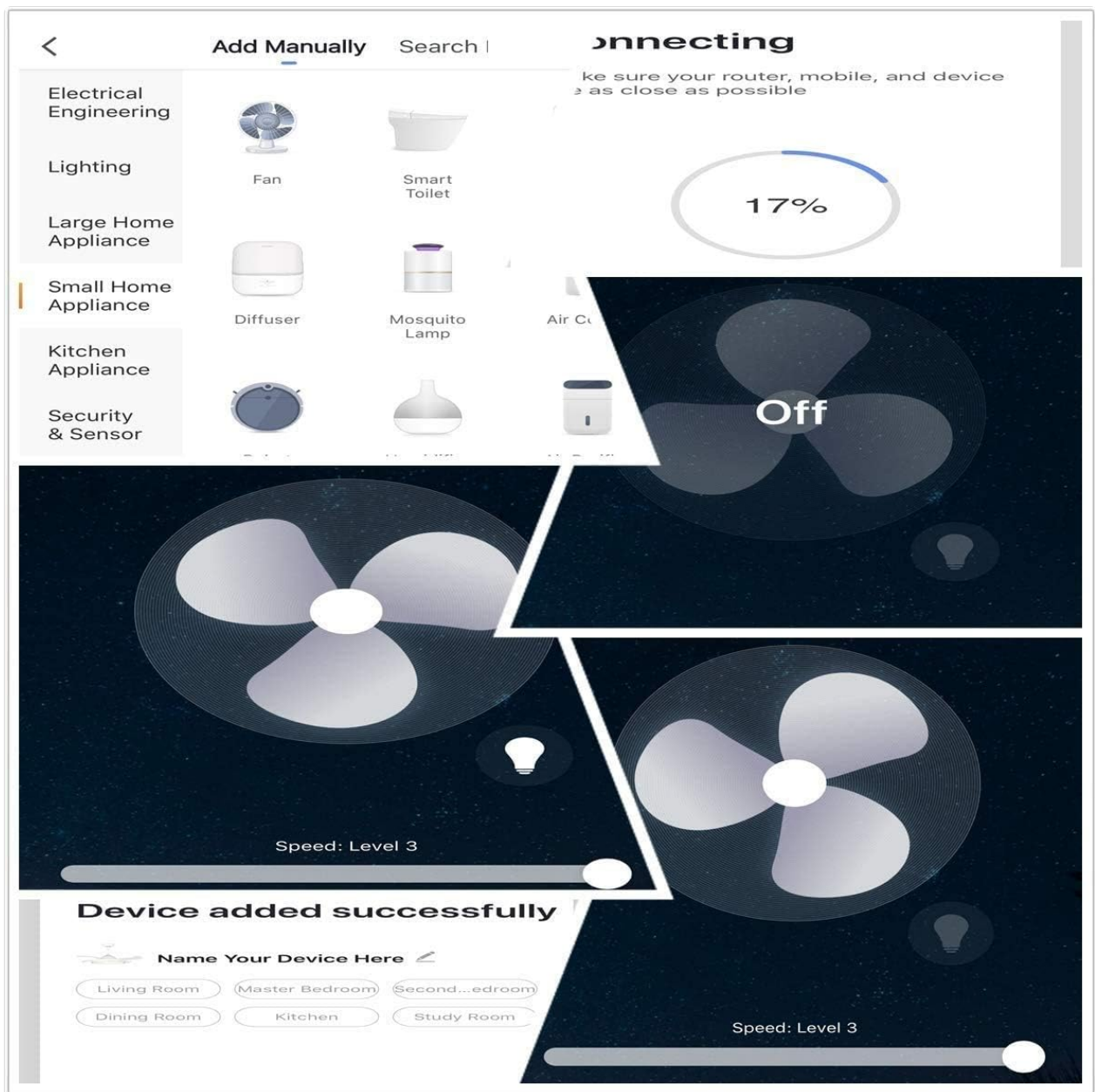


Figure 5.1: Physical installation steps for the receiver.

The Receiver Wiring Instructions

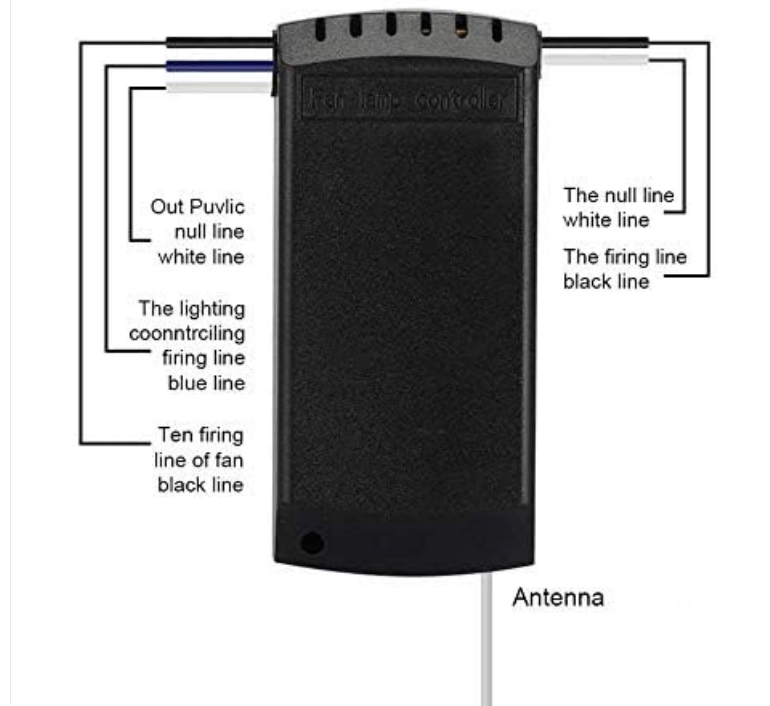


Figure 5.2: Receiver wiring instructions.

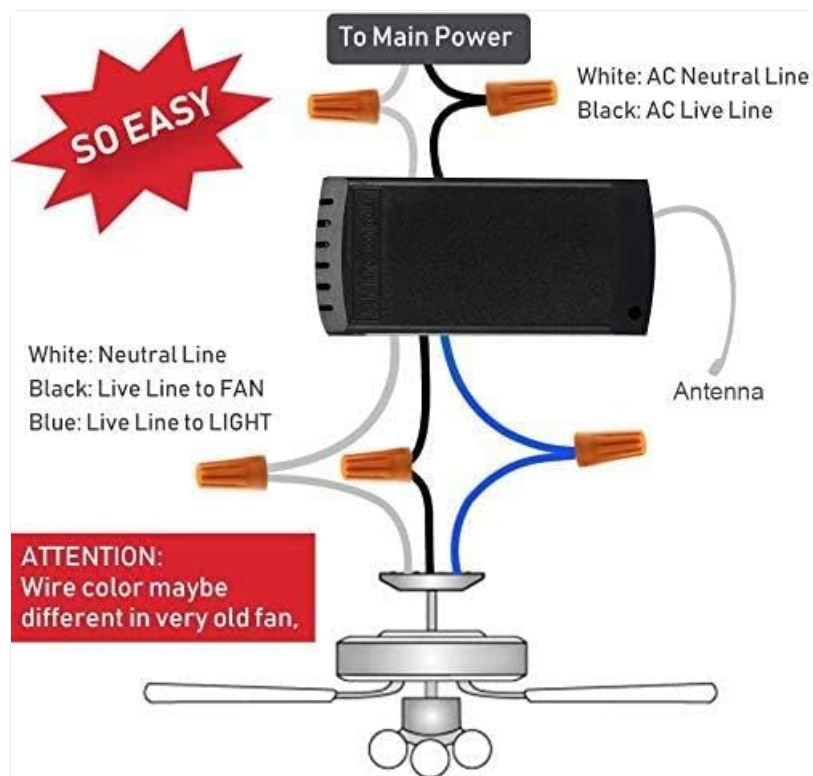


Figure 5.3: Simplified wiring diagram for ceiling fan integration.

How To Use

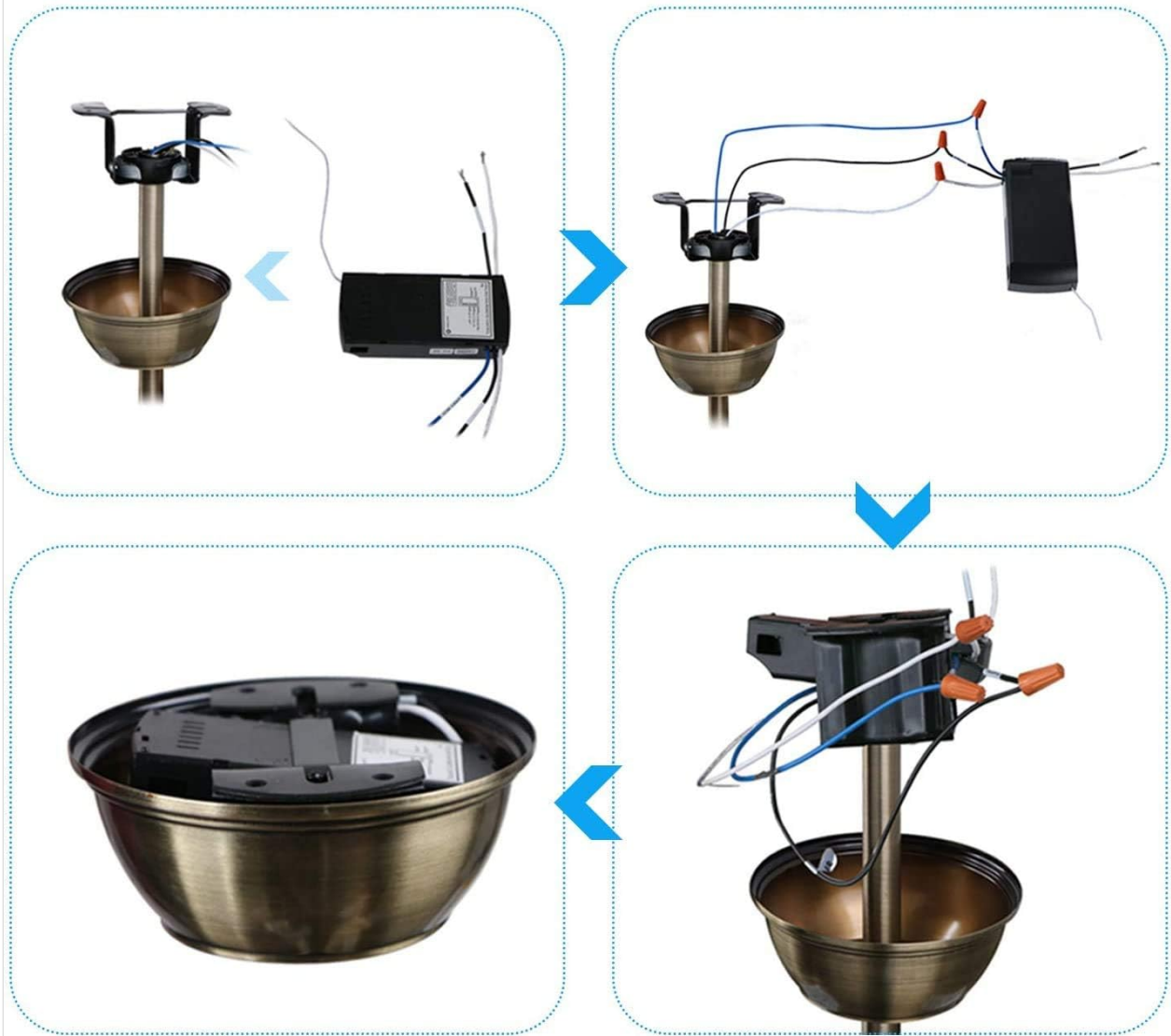


Figure 5.4: Step-by-step visual guide for receiver installation.

Installation Video Guide

Video 5.1: Detailed installation and wiring instructions for the QIACHIP Universal WiFi Ceiling Fan Remote Control Kit.

6. Remote Control Operation

The remote control is pre-paired with the receiver at the factory. You can directly control your fan and light using the buttons on the remote.

- **MED / LOW / HI:** Adjust fan speed.
- **LIGHT ON/OFF:** Toggle the light.
- **STOP:** Turn off the fan.
- **1H / 2H / 4H / 8H:** Set fan timer for automatic shut-off.

Remote Control Demonstration

Video 6.1: A brief demonstration of the remote control's functions for the ceiling fan kit.

7. Smart Life App & Voice Control Setup

To enable smart control features, download the