

[Manuals.plus](#) /

> [XTUGA](#) /

> XTUGA Professional Audio Mixer Sound Board Console ES602 USB/MP3/Bluetooth Stage Audio Mixer Built-in Digital Effect Mixer Music Mixer 7 Channel Mixer +48Vpower (Black) User Manual

XTUGA ES602-Black

XTUGA ES602 Professional Audio Mixer User Manual

Model: ES602-Black

1. INTRODUCTION

Thank you for purchasing the XTUGA ES602 Professional Audio Mixer. This 7-channel mixer is designed for stage audio, studio recording, and various live sound applications, offering high-quality audio processing with built-in digital effects, USB/MP3 playback, and Bluetooth connectivity. This manual provides detailed instructions for setup, operation, and maintenance to ensure optimal performance and longevity of your device.

2. SAFETY INFORMATION

- Read all instructions carefully before operating the mixer.
- Keep this manual for future reference.
- Do not expose this equipment to rain or moisture.
- Do not block any ventilation openings. Install in accordance with the manufacturer's instructions.
- Do not install near any heat sources such as radiators, heat registers, stoves, or other apparatus (including amplifiers) that produce heat.
- Protect the power cord from being walked on or pinched, particularly at plugs, convenience receptacles, and the point where they exit from the apparatus.
- Only use attachments/accessories specified by the manufacturer.
- Unplug this apparatus during lightning storms or when unused for long periods of time.
- Refer all servicing to qualified service personnel. Servicing is required when the apparatus has been damaged in any way, such as power-supply cord or plug is damaged, liquid has been spilled or objects have fallen into the apparatus, the apparatus has been exposed to rain or moisture, does not operate normally, or has been dropped.

3. PACKAGE CONTENTS

Upon opening the package, please verify that all items listed below are present and in good condition:

- XTUGA ES602 Professional Audio Mixer
- Power Adapter
- User Manual (this document)

ES602 USB

PROFESSIONAL MIXER



- 1.USB
- 2.Bluetooth
- 3.MP3 play
- 4.LCD display
- 5.48V phantom power supply

Figure 3.1: Contents of the XTUGA ES602 package, including the mixer unit, power adapter, and user manual.

4. PRODUCT FEATURES

- **Ultra-fashion and Ultra-thin Design:** All-metal chassis with high dynamic range and low noise.
- **High-Quality Microphone Preamplifiers:** Ensures clear and robust audio input.
- **Multi-format Play Support:** Includes Bluetooth connectivity for mobile devices and digital display MP3 (U-DISK MP3 input) with recording capability.
- **Mono Channels EQ:** Each channel features a 3-band EQ (High, Mid, Low) for precise tone shaping.
- **Digital Effect Processor:** Built-in digital effects for enhanced audio.

- **Dual Twelve-Band Level Display:** Main output level monitoring for accurate mixing.
- **6 Channels with XLR and Line Inputs:** XLR inputs include gain trim, switchable high-pass filters, and +48V phantom power for condenser microphones.
- **Comprehensive Output Options:** Headset monitoring, recording, and stereo equipment output jacks.
- **Individual Channel Controls:** Each channel is equipped with Aux, Effect, Gain, Channel fader knobs, and Peak indicators.

5. COMPONENT IDENTIFICATION

Familiarize yourself with the various controls and connections on your ES602 mixer.



Figure 5.1: Front panel overview of the XTUGA ES602 mixer, displaying all input channels, main controls, and the digital display section.

BLUETOOTH/MP3 CONNECTION

With Bluetooth function, connect mobile phones, computer etc. Digital LCD display MP3 (U-DISK MP3 input), MP3 with REC.

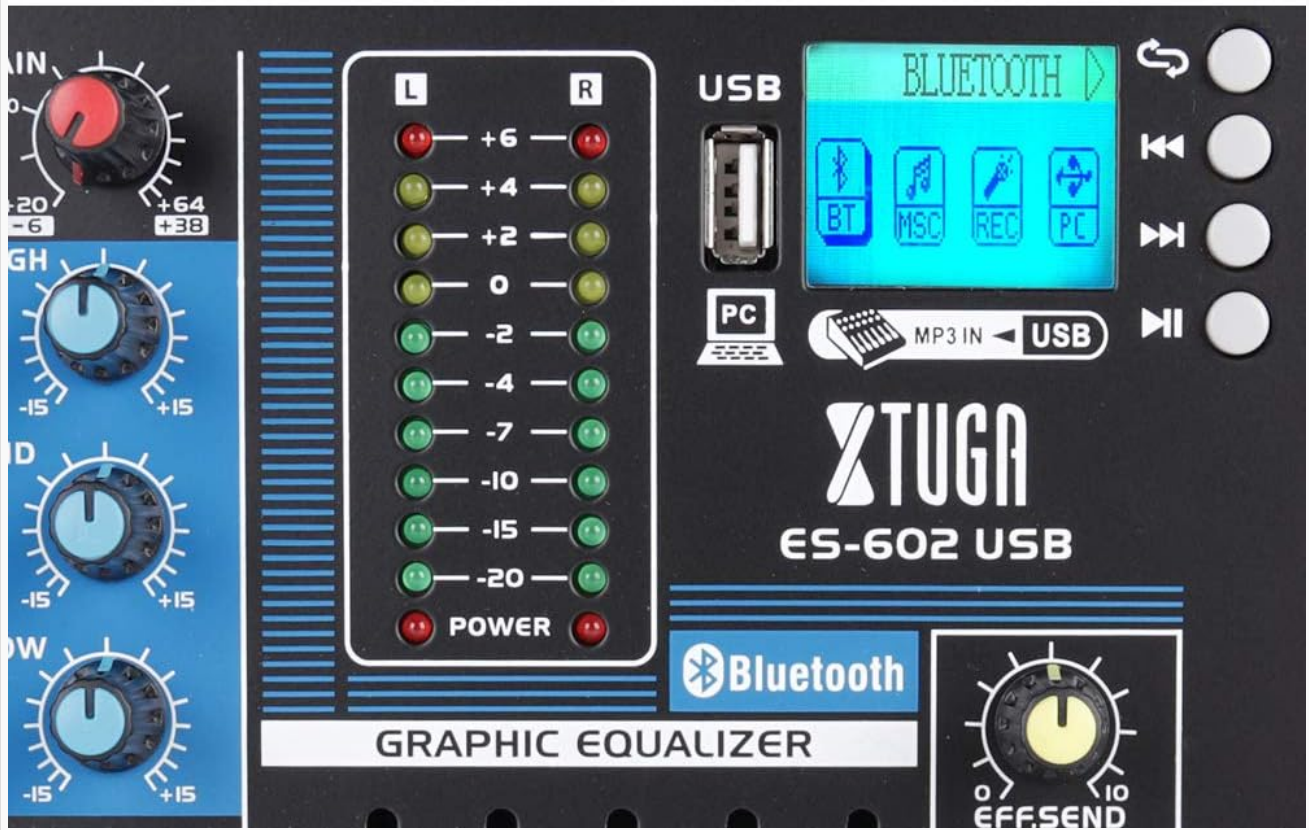


Figure 5.2: Detailed view of individual channel controls, including Gain, High, Mid, Low EQ, AUX, EFF, PAN, and channel faders.

ES602 USB DJ MIXER

SIZE



Figure 5.3: Close-up of the master section, showing the USB/MP3/Bluetooth player, graphic equalizer, effect controls, and main output faders.



Figure 5.4: Rear panel of the mixer, featuring the power switch and AC power input.

6. SETUP

6.1 Power Connection

1. Ensure the mixer's power switch is in the OFF position.
2. Connect the provided power adapter to the AC IN port on the rear of the mixer.
3. Plug the power adapter into a suitable electrical outlet.

4. Turn on the mixer using the power switch. The power indicator light will illuminate.

6.2 Audio Connections

The ES602 mixer offers various input and output options for connecting microphones, instruments, and playback devices.

- **Microphone Inputs (XLR):** Connect microphones to the XLR inputs (Channels 1-6). For condenser microphones requiring phantom power, activate the +48V phantom power switch.
- **Line Inputs (1/4" TRS/TS):** Connect instruments (guitars, keyboards) or line-level devices to the 1/4" LINE inputs.
- **Main Outputs (XLR):** Connect the mixer's main output to your power amplifier or powered speakers using XLR cables.
- **Auxiliary Outputs (1/4" TRS/TS):** Use the AUX SEND for sending signals to external effects processors or monitor speakers.
- **Headphone Output (1/4" TRS):** Connect headphones for monitoring the mix.
- **USB/MP3 Input:** Insert a USB drive for MP3 playback or connect to a computer via USB for recording/playback.

6 INPUT PORTS

- ▶ 48V phantom power supply
- Condenser microphone
- Mono 3-band EQ design
(High, Mid, Low)



Figure 6.1: Connection diagram illustrating how to connect microphones, instruments, speakers, and headphones to the mixer.

7. OPERATING INSTRUCTIONS

7.1 Input Channels (1-6)

- **GAIN Knob:** Adjusts the input sensitivity for each channel. Set it so the PEAK indicator flashes only occasionally during the loudest parts of the signal.
- **HIGH/MID/LOW EQ Knobs:** Control the treble, midrange, and bass frequencies for each channel. Adjust to shape the tone of your input signal.
- **AUX Knob:** Controls the level of the signal sent to the AUX SEND output.
- **EFF Knob:** Controls the level of the signal sent to the internal effects processor.
- **PAN Knob:** Adjusts the stereo position (left/right) of the channel in the main mix.
- **Channel Fader:** Controls the overall volume level of the channel in the main mix.
- **PEAK Indicator:** Lights up when the input signal is too high, indicating potential clipping. Reduce the GAIN if

this light stays on frequently.

- **+48V Phantom Power:** Activate this switch for condenser microphones. Ensure microphones are connected before activating.

7.2 USB/MP3/Bluetooth Playback

The ES602 features a versatile media player for various audio sources.



Figure 7.1: The digital display and control buttons for USB, MP3, and Bluetooth functions.

- **USB Playback:** Insert a USB flash drive into the USB port. The mixer will automatically detect and play MP3 files. Use the control buttons (Play/Pause, Next, Previous) on the digital display panel to navigate tracks.
- **Bluetooth Connection:** Press the 'MODE' button on the digital display until 'Bluetooth' is selected. On your mobile device, search for 'XTUGA ES602' (or similar) in your Bluetooth settings and pair. Once connected, audio from your device will play through the mixer.
- **Recording (REC):** The MP3 player supports recording to a USB drive. Refer to the digital display for recording

options.

7.3 Effects and Monitoring

- **EFFECT Knob:** Adjusts the overall level of the built-in digital effects.
- **PHONES Knob:** Controls the volume of the headphone output.
- **MAIN Faders (L/R):** Control the overall volume of the stereo main output.
- **Graphic Equalizer:** Use the sliders to fine-tune the overall frequency response of the main mix.

8. MAINTENANCE

- **Cleaning:** Use a soft, dry cloth to clean the exterior of the mixer. Do not use liquid cleaners or aerosols.
- **Storage:** When not in use, store the mixer in a cool, dry place away from direct sunlight and extreme temperatures.
- **Ventilation:** Ensure proper ventilation around the mixer to prevent overheating. Do not block the ventilation slots.
- **Power Supply:** Always use the original power adapter provided with the mixer. If the power adapter becomes excessively hot, discontinue use and contact support.

9. TROUBLESHOOTING

Problem	Possible Cause	Solution
No sound output	Power off; Main faders down; Input gain too low; Cables not connected properly.	Check power, raise main faders, increase channel gain, verify all cable connections.
Distorted sound	Input gain too high (PEAK light on); Output level too high; Faulty cable.	Reduce input GAIN, lower main faders, try different cables.
No Bluetooth connection	Mixer not in Bluetooth mode; Device not discoverable; Already paired with another device.	Ensure mixer is in Bluetooth mode, make sure device is discoverable, unpair from other devices.
USB playback issues / Loose connection	USB drive not formatted correctly; Corrupt files; Loose USB port connection.	Ensure USB is FAT32 format, try different USB drive, ensure USB is firmly seated. If issues persist, contact support.
Power adapter gets very hot	Overload; Faulty adapter; Poor ventilation.	Unplug immediately. Ensure proper ventilation. If it continues, the adapter may be faulty and needs replacement. Contact support.

10. SPECIFICATIONS

EASY TO USE

SUITABLE FOR MULTIPLE SCENARIOS



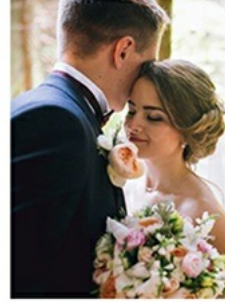
DJ MIXER



BAR SINGING



STAGE SHOW



WEDDING HOST



Figure 10.1: Approximate dimensions of the XTUGA ES602 mixer.

Specification	Value
Product Dimensions	46 x 41 x 14 cm
Item Model Number	ES602-Black
Color	Black
Power Source	Corded Electric
Item Weight	4.08 kg
Number of Channels	7
Connectivity Technology	Bluetooth, USB
Output Connector Type	Auxiliary, XLR

11. WARRANTY AND SUPPORT

XTUGA products are designed for reliability and performance. For warranty information, technical support, or service inquiries, please refer to the warranty card included with your product or visit the official XTUGA website. Please retain your proof of purchase for any warranty claims.

