



Manuals.plus /

› Tymate /

› Tymate TPMS Tire Pressure Monitoring System User Manual

Tymate TM527M

Tymate TPMS Tire Pressure Monitoring System User Manual

Model: TM527M

Brand: Tymate

1. INTRODUCTION

The Tymate TPMS Tire Pressure Monitoring System (Model TM527M) is designed to provide real-time monitoring of your vehicle's tire pressure and temperature. This system enhances driving safety by alerting you to abnormal tire conditions, such as high pressure, low pressure, high temperature, and rapid air leakage. Equipped with a large, colorful HD screen and advanced external sensors, it offers clear visual feedback and reliable performance in various environmental conditions.

2. WHAT'S IN THE BOX

- 1 x TPMS Monitor
- 1 x Monitor Stand
- 1 x Monitor Pad
- 1 x Charging Cable (Car cigarette lighter / USB interface)
- 4 x External TPMS Sensors
- 4 x Rubber O-rings
- 4 x Protection Caps
- 4 x Anti-theft Hex Nuts
- 1 x Wrench
- 1 x User Manual



Figure 1: Tymate TPMS System components, showing the monitor, four external sensors, and a suction cup mount.

3. SETUP AND INSTALLATION

3.1 Monitor Setup

The Tymate TPMS monitor can be mounted on your dashboard or windshield using the provided suction cup mount. Connect the monitor to your vehicle's cigarette lighter or USB interface using the charging cable. The monitor features a large, colorful HD screen for clear visibility of tire data.



Figure 2: Side view of the Tymate TPMS monitor, highlighting the power socket, full-screen display, and control buttons (DOWN, SET, UP).

Security is the most important thing

Real-time Monitoring

Display and monitor the real-time temperature and pressure of 4 tires at the same time, never miss any data!



Figure 3: The Tymate TPMS monitor positioned on a car dashboard, showing its large display for real-time tire data.

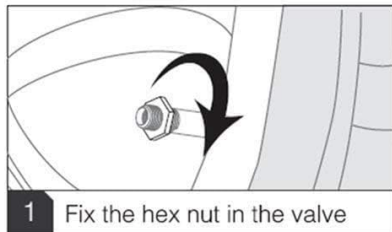
Your browser does not support the video tag.

Video 1: Official setup guide for the Tymate TM527 monitor, demonstrating initial power-on and basic display functions.

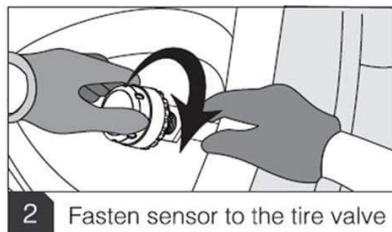
3.2 Sensor Installation

The system includes four external sensors, each labeled for a specific tire position (LF: Left Front, RF: Right Front, LR: Left Rear, RR: Right Rear). Ensure you install the correct sensor on the corresponding tire valve.

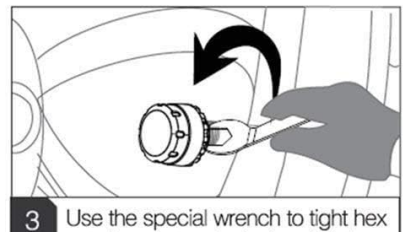
1. Unscrew the original valve cap from the tire valve.
2. Screw one of the anti-theft hex nuts onto the valve stem, threading it down to the base.
3. Screw the labeled TPMS sensor onto the valve stem until it is hand-tight.
4. Use the provided wrench to tighten the anti-theft hex nut against the sensor in the counter-clockwise direction to secure it.
5. Place the protection cap over the sensor.



1 Fix the hex nut in the valve



2 Fasten sensor to the tire valve



3 Use the special wrench to tight hex nuts in counter clockwise direction.

Figure 4: Visual steps for installing the anti-theft external sensors onto the tire valve stems.

Your browser does not support the video tag.

Video 2: Detailed instructions for the installation and removal of the external sensors.

Important Note: After the first installation, turn on the monitor first, then install the sensors. All data will be displayed after driving for 5-10 minutes, as the sensors require motion activation.

4. OPERATING THE SYSTEM

The Tymate TPMS provides real-time tire pressure and temperature readings on its large, colorful screen. The system is designed to alert you immediately to any abnormal conditions.

MULTIPE MONITORING MODES



Figure 5: The monitor displays various monitoring modes including leakage warning, high/low temperature warning, high/low pressure warning, real-time pressure monitoring, and vehicle battery voltage monitoring.

4.1 Alert Modes

The TM527M is equipped with four primary alarm modes:

- **High Pressure Alarm:** Alerts if tire pressure exceeds the user-defined maximum.
- **Low Pressure Alarm:** Alerts if tire pressure drops below the user-defined minimum.
- **High Temperature Alarm:** Alerts if tire temperature exceeds a safe threshold.
- **Rapid Air Leakage Alarm:** Alerts immediately if a sudden and significant drop in tire pressure is detected.

You can set the maximum and minimum alarm values for tire pressure (range: 12-87 PSI) and temperature. The unit supports both Bar/PSI and °C/°F measurements.

Your browser does not support the video tag.

Video 3: Demonstration of the Tymate TPMS system's large colorful screen and real-time monitoring capabilities.

5. MAINTENANCE

5.1 Sensor Battery Replacement

The external sensors are designed for low power consumption and have a long working life. When the sensor battery (CR1632) needs replacement, the device's power prompt function will alert you.

1. Use the provided tool to unscrew the sensor cover counter-clockwise.
2. Carefully remove the old CR1632 lithium battery.
3. Fix in the new CR1632 battery with the positive (+) side facing up.
4. Examine if the sealing rubber O-ring is in good condition. Replace if necessary using the spare O-rings provided.
5. Clockwise screw back the sensor cover with the provided tools.

Your browser does not support the video tag.

Video 4: Step-by-step guide on how to replace the battery in the external sensors.

5.2 General Care

To ensure longevity and accurate readings, keep the sensors and monitor clean. Avoid exposing the monitor to extreme temperatures for prolonged periods. The sensors are designed to withstand harsh environments, but regular inspection is recommended.

6. TROUBLESHOOTING

- **Intermittent Data Display:** If data is displayed intermittently, try moving the display away from potential interference sources. If the problem persists, a signal repeater may be required (especially for larger vehicles).
- **Tire Blowout/Puncture:** TPMS cannot prevent punctures caused by sharp objects or damaged tires, nor can it monitor instantaneous changes. Regular comprehensive tire inspections (at least monthly) are recommended.
- **No Data Displayed After Installation:** After the first installation, all data will be displayed after driving for 5-10 minutes. The sensors need motion activation to begin transmitting data.
- **Measurement Error:** The typical error value for tire pressure measurement is ± 3 PSI.
- **Sensor or Monitor Not in Normal Operation:** If you encounter any other problems, please refer to the contact information on the last page of the user manual for customer service.

Important Notice: This model is not recommended for RV trailers or other large vehicles due to potential signal interference and range limitations. For RVs or trailers, consider models designed for longer signal transmission distances.

7. SPECIFICATIONS

Feature	Detail
Brand	Tymate
Model	TM527M
Item Weight	12.6 ounces
Package Dimensions	7.76 x 6.18 x 2.32 inches
Country of Origin	China
Batteries	4 Lithium Metal batteries required (CR1632)
Pressure Setting Range	12-87 PSI
Pressure Accuracy	±3 PSI
Display	Large-Size Colorful HD Screen

8. WARRANTY AND SUPPORT

For warranty information, technical support, or any inquiries not covered in this manual, please refer to the contact details provided on the last page of your physical User Manual. Tymate is committed to ensuring customer satisfaction and provides professional after-sales support.