

## CCLIFE 2530

# CCLIFE Rivet Gun Model 2530 Instruction Manual

Your guide to safe and effective riveting.

## 1. PRODUCT OVERVIEW

---

The CCLIFE Rivet Gun Model 2530 is a robust and versatile hand tool designed for setting blind rivets. It features extra-long, ergonomically shaped handles for optimal leverage and comfortable use during extended periods. This set includes 5 interchangeable nozzles and a comprehensive assortment of 320 blind rivets in various sizes, making it suitable for both professional and private applications.



Image: The CCLIFE Rivet Gun Model 2530, showcasing its long handles and sturdy construction.

## 2. PACKAGE CONTENTS

---

Please verify that all items are present in your package:

- 1 x CCLIFE Rivet Gun
- 5 x Interchangeable Nozzles (2.4mm, 3.2mm, 4.0mm, 4.8mm, 6.4mm)
- 320 x Blind Rivets (assorted sizes: 2.4mm, 3.2mm, 4.0mm, 4.8mm, 6.4mm)



Image: All components of the CCLIFE Rivet Gun set, including the tool, various nozzles, and a selection of rivets.

### 3. SAFETY INFORMATION

---

Always prioritize safety when using hand tools. Failure to follow these guidelines may result in injury or damage to the tool.

- **Wear Eye Protection:** Always wear safety glasses to protect against flying debris.
- **Wear Hand Protection:** Use work gloves to prevent pinching or cuts.
- **Inspect Tool:** Before each use, check the rivet gun for any damage or loose parts. Do not use if damaged.
- **Proper Rivet Selection:** Ensure the rivet material and size are appropriate for the application and the nozzle installed.
- **Secure Workpiece:** Always secure the materials being riveted to prevent movement during operation.
- **Keep Clear:** Keep hands and other body parts clear of the tool's moving parts during operation.
- **Store Safely:** Store the tool in a dry, secure place out of reach of children.

### 4. SETUP

---

Before using the rivet gun, select and install the correct nozzle for your rivet size.

1. **Identify Rivet Size:** Determine the diameter of the rivet you intend to use.
2. **Select Correct Nozzle:** Choose the nozzle that matches the rivet diameter. The nozzle sizes (2.4mm, 3.2mm, 4.0mm, 4.8mm, 6.4mm) are typically marked on the nozzles themselves and on the tool's nozzle storage area.
3. **Remove Current Nozzle (if applicable):** Unscrew any currently installed nozzle by hand.

4. **Install New Nozzle:** Screw the selected nozzle firmly into the head of the rivet gun by hand until it is secure. Do not overtighten with tools.



Image: A hand demonstrating the process of screwing an interchangeable nozzle onto the rivet gun head.



Image: Close-up of the rivet gun's head showing the integrated storage for the different sized nozzles, with the 3.2mm nozzle highlighted.

## 5. OPERATING INSTRUCTIONS

---

Follow these steps to effectively set a blind rivet:

1. **Drill Hole:** Drill a hole through the materials to be joined. The hole diameter should match the rivet diameter.
2. **Insert Rivet:** Insert the rivet's pin (mandrel) into the installed nozzle of the rivet gun.
3. **Position Rivet:** Place the rivet body into the drilled hole until its flange rests firmly against the material surface.
4. **Operate Tool:** Squeeze the handles of the rivet gun together firmly and steadily. The tool will pull the rivet's mandrel, causing the rivet body to expand and form a secure joint. Repeat squeezing until the mandrel snaps off.
5. **Eject Mandrel:** After the mandrel snaps, open the handles fully to eject the broken mandrel. If the mandrel does not eject easily, gently tap the tool or use pliers to remove it.

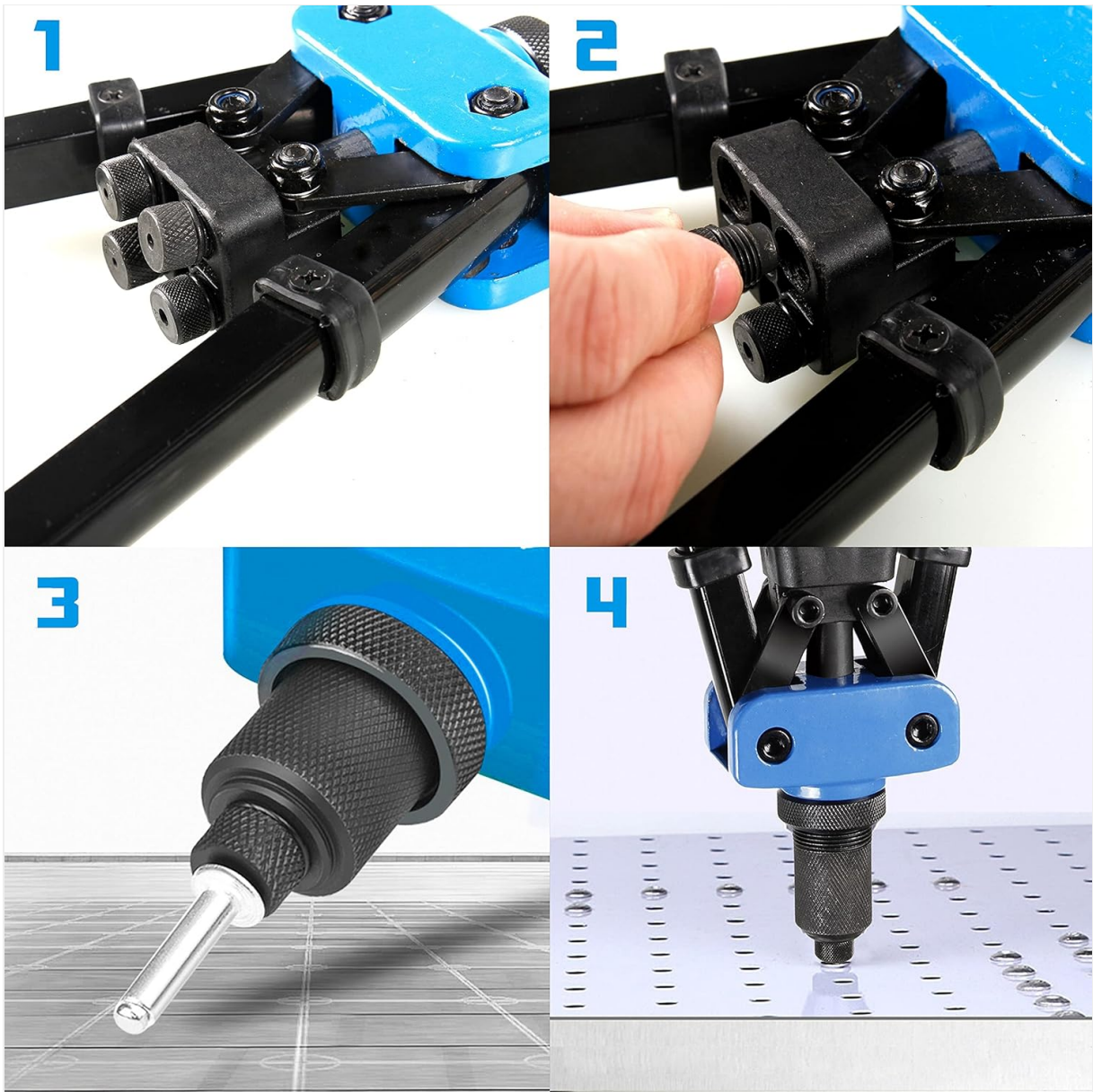


Image: A visual guide showing four steps of rivet gun operation: 1) Rivet gun ready, 2) Inserting rivet, 3) Rivet in nozzle, 4) Rivet gun positioned for use.



Image: A user operating the CCLIFE Rivet Gun to fasten a rivet into a green perforated panel.

## 6. MAINTENANCE

---

Proper maintenance ensures the longevity and reliable performance of your rivet gun.

- **Cleaning:** After each use, wipe down the tool with a clean, dry cloth to remove any dust or debris.
- **Lubrication:** Periodically apply a small amount of light machine oil to the pivot points and jaws to ensure smooth operation.
- **Nozzle Care:** Keep the nozzles clean and free of obstructions. Store them securely in the designated slots on the tool.
- **Storage:** Store the rivet gun in a dry environment to prevent rust. The tool's handles can be secured together with the provided clasp for compact storage.

## 7. TROUBLESHOOTING

---

If you encounter issues during operation, refer to the following common problems and solutions:

- **Rivet Mandrel Does Not Snap Off:**
  - Ensure the correct nozzle size is installed for the rivet.
  - Apply more force when squeezing the handles.
  - The rivet may be too hard for the tool or the material.
- **Rivet Mandrel Does Not Eject:**
  - Fully open the handles after the mandrel snaps.
  - If the tail of the rivet (mandrel) remains stuck, try leaving a few turns before fully tightening the nozzle. This can sometimes help with easier ejection.
  - Use pliers to carefully pull out the stuck mandrel.

- **Rivet Does Not Set Properly:**

- Verify the rivet length is appropriate for the material thickness.
- Ensure the hole size is correct for the rivet diameter.
- Apply consistent and firm pressure when squeezing the handles.

## 8. SPECIFICATIONS

Feature	Detail
Brand	CCLIFE
Model Number	2530
Material	Alloy Steel
Product Dimensions (L x W)	38.3L x 16W centimeters
Item Weight	1.23 Kilograms
Handle Material	Alloy Steel
Grip Type	Ergonomic
Nozzle Sizes Included	2.4mm, 3.2mm, 4.0mm, 4.8mm, 6.4mm
Rivet Quantity Included	320 pieces (assorted sizes)

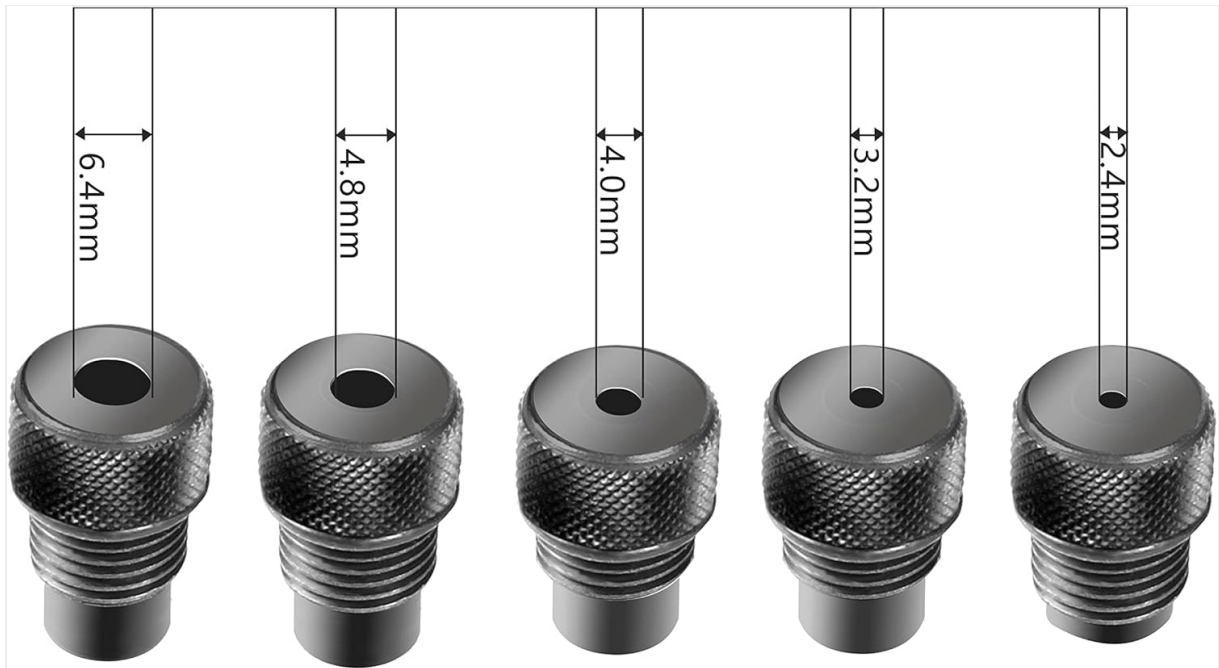


Image: Detailed view of the five interchangeable nozzles, showing their respective diameters (2.4mm, 3.2mm, 4.0mm, 4.8mm, 6.4mm).



Image: A visual representation of the included rivet sizes and quantities, along with their corresponding nozzle sizes.

## 9. WARRANTY AND SUPPORT

CCLIFE stands by the quality of its products. For any questions, concerns, or warranty claims regarding your Rivet Gun Model 2530, please contact CCLIFE customer support through the retailer where you purchased the product or visit the official CCLIFE website for contact information.

Please retain your proof of purchase for warranty purposes.