

Victor M923

Victor Fast-Kill M923 Refillable Mouse Poison Bait Station - Instruction Manual

Model: M923

1. INTRODUCTION

The Victor Fast-Kill Brand Refillable Mouse Poison Bait Station (Model M923) is designed for effective mouse control. This station comes pre-filled with a non-anticoagulant rodenticide, formulated to be highly palatable to rodents. Its child-resistant design ensures safety while providing efficient pest management.

VICTOR®

FAST-KILL® BRAND REFILLABLE MOUSE BAIT STATION*

* House Mice may consume a lethal dose in a single night's feeding, but it can take two or more days from the time of bait consumption for these mice to die.

KILLS HOUSE MICE

**20
BLOCKS**



CHILD RESISTANT BAIT STATION

PALATABLE BAIT FORMULATION

THIS BAIT STATION IS RESISTANT TO TAMPERING BY CHILDREN.
For Use Indoors Only.

**KEEP OUT OF REACH
OF CHILDREN.**

CAUTION:

See back panel for additional precautionary statements and directions for use.

ACTIVE INGREDIENT:

Bromethalin.....0.01%

OTHER INGREDIENTS:.....99.99%

TOTAL:.....100.00%

NET CONTENTS:

Each package contains:
15 oz (20 x 0.75 oz (21.2 g)
blocks & 1 refillable bait station)

Figure 1: Victor Fast-Kill Brand Refillable Mouse Poison Bait Station product packaging.

2. SAFETY INFORMATION

WARNING: This product contains rodenticide. Read and follow all label directions and precautions before use. Keep out of reach of children, pets, and non-target wildlife.

- Always wear the included gloves when handling bait blocks.
- The bait station features a child-resistant plastic housing with interior beveled columns to prevent accidental access to the bait.
- Place bait stations in areas inaccessible to children and pets.

- Do not place bait in areas where there is a possibility of contaminating food or surfaces that come into direct contact with food.
- If swallowed, call a poison control center or doctor immediately for treatment advice.
- If an animal eats this bait, call a veterinarian at once.

3. PACKAGE CONTENTS

Your Victor Fast-Kill M923 package includes:

- 1 x Pre-filled Refillable Mouse Poison Bait Station
- 19 x Bait Refills
- 1 x Pair of Disposable Gloves

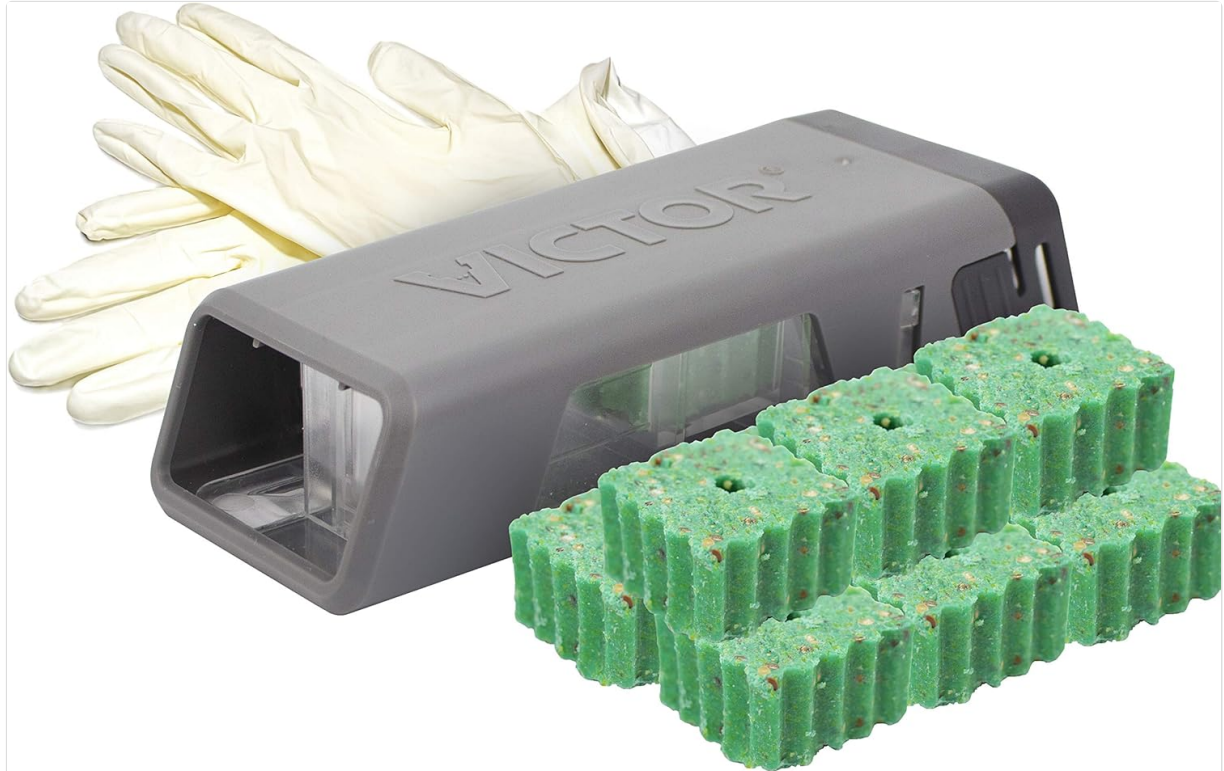


Figure 2: Included components: bait station, bait refills, and gloves.

4. SETUP AND PLACEMENT

The bait station arrives pre-filled and ready for immediate use. No assembly is required for initial setup.

1. **Identify Treatment Areas:** Determine areas where mice are most likely to find and consume the bait. Generally, these areas are along walls, by gnawed openings, in corners, and concealed places, or in other locations where there are signs of mouse activity.
2. **Place Bait Station:** Position the bait station so that both of the entrance holes are exposed and not blocked. Place it in a corner or along a wall or other vertical surface in an appropriate location.
3. **Indoor Use Only:** This bait station is intended for indoor use only. Do not apply further than 50 feet from home or building.



Includes: 1 pre-filled refillable bait station, 19 bait refills, and disposable gloves

Figure 3: Proper placement of the bait station against a wall.

5. OPERATING INSTRUCTIONS

The Victor Fast-Kill bait station features a dual-entry design to encourage rodent interaction and a highly palatable bait formulation.

5.1. How it Works

- Mice enter the dual-entry tunnels, attracted by the bait.
- They consume a lethal dose of the non-anticoagulant rodenticide.
- Due to the unique formulation, rodents will stop feeding after consuming a lethal dose, allowing for control of more rodents with less bait.
- Rodents typically leave the station to die elsewhere.

Mice Can Enter From Both Ends

Dual-entry design encourages rodents to enter the station.

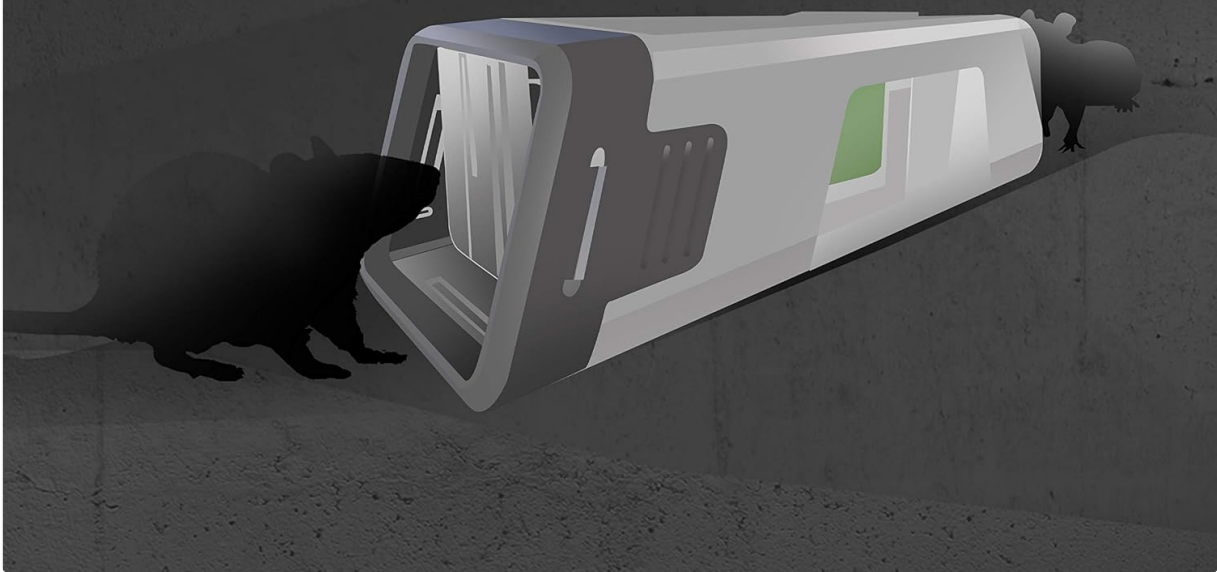


Figure 4: Dual-entry design encourages mice to enter the station.

5.2. Monitoring and Refilling

Maintain an uninterrupted supply of fresh bait for at least 15 days or as long as activity persists. Regularly inspect the bait station for signs of bait consumption.

1. **To Open the Station:** You will need both hands. Find the latch on the underside of the station and the top button. Using one hand, pull the bottom latch fully in the direction shown by the arrow with your index finger and fully press the button on top of the station with your thumb. While still pulling on the bottom latch and pressing the top button, swing the window open with your other hand.
2. **To Refill:** Wearing gloves, remove any remaining old bait. Place a new soft bait from the bag, leaving the protective wrapper in place, into the station ensuring that the peg goes through the hole in the center of the soft bait. Press bait firmly into the station.
3. **To Close the Station:** Swing the window back into place until a click is heard, ensuring it is securely locked.

Video 1: Demonstrating how to use Victor Fast-Kill Ready-to-Use Refillable Bait Stations.

6. MAINTENANCE

Regularly check bait stations for signs of activity and bait consumption. Replace bait as needed to ensure continuous control. If bait has become moldy or spoiled, remove and replace with fresh bait.

7. TROUBLESHOOTING

- **No Bait Consumption:** If bait is not being eaten, try relocating the bait station to an area with more signs of mouse activity (droppings, gnaw marks). Ensure the entrance holes are not blocked.
- **Bait Depleted Quickly:** If bait is consumed rapidly, increase the number of bait stations or check more frequently to ensure a continuous supply.
- **Station Not Opening/Closing:** Ensure both the bottom latch and top button are fully engaged as per the refilling instructions. Do not force the mechanism.

8. SPECIFICATIONS

Attribute	Detail
Brand	Victor
Model Number	M923
Product Dimensions	8.13"L x 3.75"W x 9.5"H
Item Weight	1.1 Pounds
Material	Plastic
Target Species	Mouse
UPC	072868751028

9. DISPOSAL

Pesticide disposal and container handling must be done according to local regulations. Do NOT reuse or refill this container except as described in the directions for use. If empty, place in trash or offer for recycling if available. If partially filled, call your local solid waste agency for disposal instructions. Never place any unused product down any indoor or outdoor drain.

10. WARRANTY AND SUPPORT

For any questions, concerns, or to report issues with your Victor Fast-Kill M923 Refillable Mouse Poison Bait Station, please contact the manufacturer directly. Refer to the product packaging for specific contact information or visit the official Victor website for support and warranty details.