

## Lepro PR901503-RGB-EU

# Lepro Smart LED Ceiling Light User Manual

Model: PR901503-RGB-EU

## INTRODUCTION

---

This user manual provides detailed instructions for the installation, operation, and maintenance of your Lepro Smart LED Ceiling Light. This smart light offers versatile lighting options, including 16 million colors and tunable white light, controllable via a smartphone app or voice commands through Amazon Alexa and Google Assistant. Please read this manual thoroughly before installation and use to ensure proper functionality and safety.



Image: The Lepro Smart LED Ceiling Light, shown with compatible smart home devices like Amazon Alexa and Google Home speakers, and a smartphone displaying the control app interface. The background features a gradient of colors, highlighting the light's RGB capabilities.

## SAFETY INFORMATION

---

- Ensure the power supply is turned off at the main circuit breaker before installation or maintenance.
- Installation should be performed by a qualified electrician if you are unsure.
- Do not attempt to disassemble or modify the light fixture.
- This product is designed for indoor use and is IP54 rated for protection against splashing water, making it suitable for bathrooms (zones 1, 2 & 3).
- Operate the light within the specified voltage range (240 Volts).

## WHAT'S IN THE BOX

---

Verify that all components are present before beginning installation:

- 1 x Lepro Smart LED Ceiling Light
- Screws
- Wall Plugs
- Anti-vibration Pads
- 1 x User Manual (this document)

## SETUP

---

### 1. Pre-installation Checks

- Confirm that your home Wi-Fi network operates on the 2.4GHz frequency. This device is not compatible with 5GHz Wi-Fi.
- Ensure the installation location is suitable and the power supply can be safely disconnected.



Image: A visual representation indicating that the smart light connects to a smartphone via a 2.4GHz Wi-Fi network only.

### 2. Physical Installation

Follow these steps to physically install the ceiling light:

1. **Turn off Power:** Before starting, ensure the main power switch to the circuit is OFF.
2. **Remove Bracket:** Gently remove the mounting bracket from the light fixture.
3. **Fix Bracket:** Secure the mounting bracket to the ceiling using the provided screws and wall plugs. Ensure it is firmly attached.
4. **Connect Wires:** Connect the electrical wires from your ceiling to the "N" (Neutral) and "L" (Live) terminals on the light fixture. Ensure connections are secure.
5. **Attach Light:** Align the light fixture with the mounted bracket and push it firmly until it clicks into place.

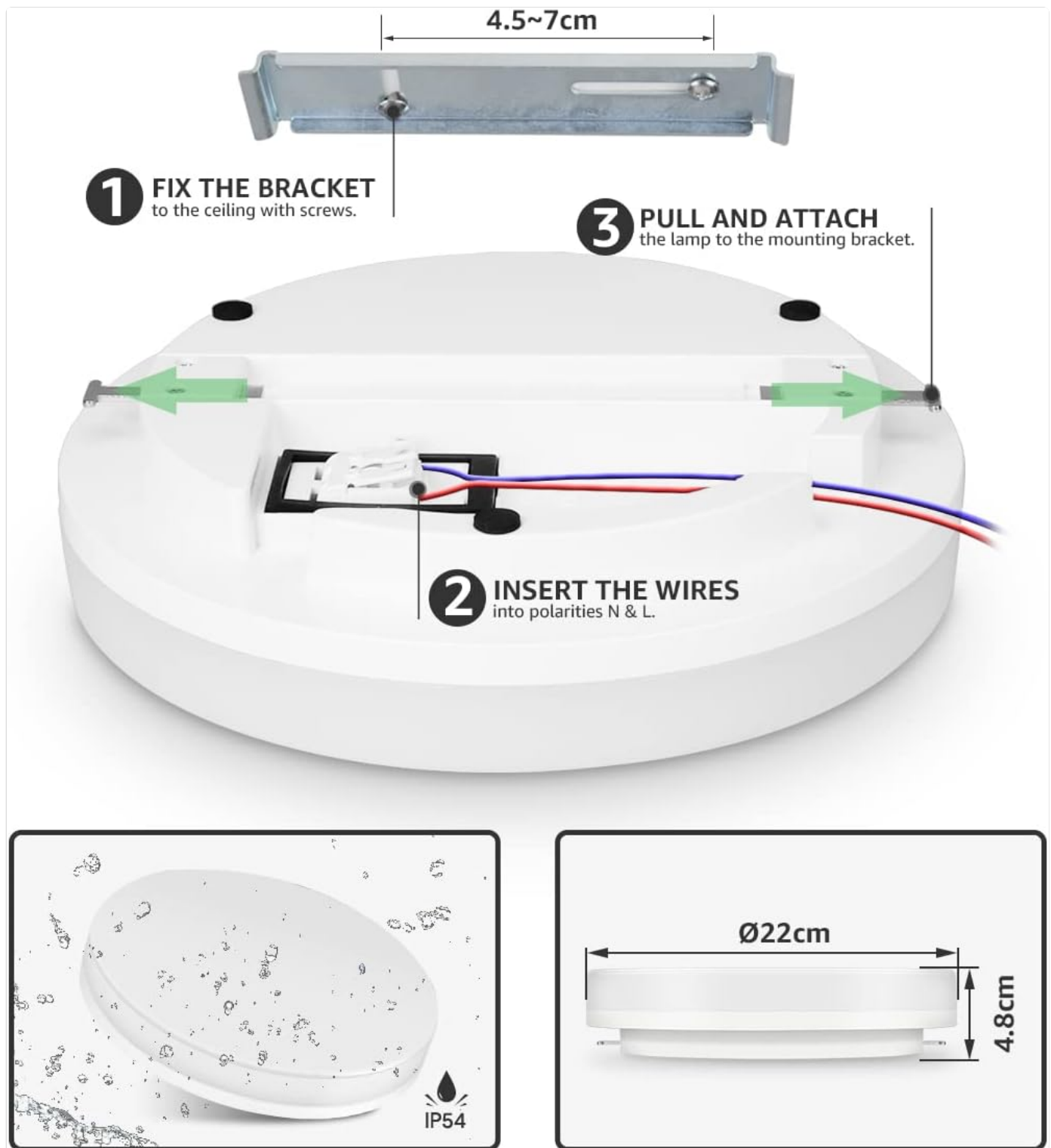


Image: Step-by-step diagram illustrating the physical installation process of the ceiling light, including fixing the bracket to the ceiling, inserting electrical wires into the N and L terminals, and attaching the lamp to the mounting bracket.

### 3. App Download and Connection

To control your smart light, download the "Smart Life" app and follow the pairing process:

- 1. Download App:** Search for and download the "Smart Life" app from your smartphone's app store (Google Play Store for Android or Apple App Store for iOS).
- 2. Power Cycle Light:** Turn the light switch ON and OFF three times consecutively. The light should begin to blink rapidly, indicating it is in pairing mode.
- 3. Add Device:** Open the Smart Life app, register or log in, and tap "Add Device" or the "+" icon. Select "Lighting" and then "Ceiling Light (Wi-Fi)".
- 4. Connect to Wi-Fi:** Enter your 2.4GHz Wi-Fi network password when prompted. Ensure your phone is also

connected to the 2.4GHz network.

5. **Pairing:** The app will search for and connect to the light. Once connected, you can rename the device and begin controlling it.

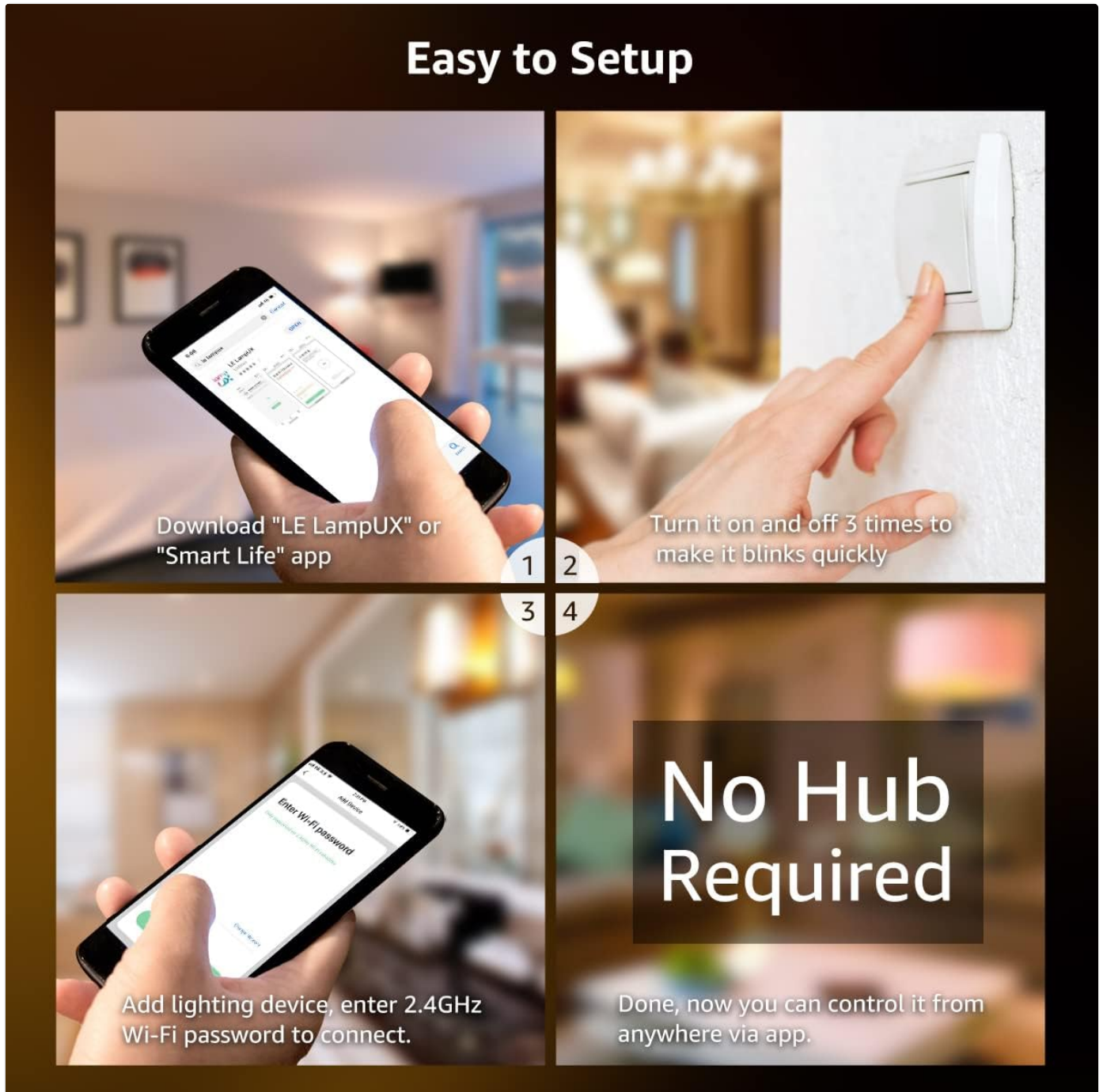


Image: A four-panel graphic detailing the easy setup process: downloading the "Smart Life" app, power cycling the light three times to enter pairing mode, adding the lighting device in the app, and entering the 2.4GHz Wi-Fi password to connect. No hub is required for operation.

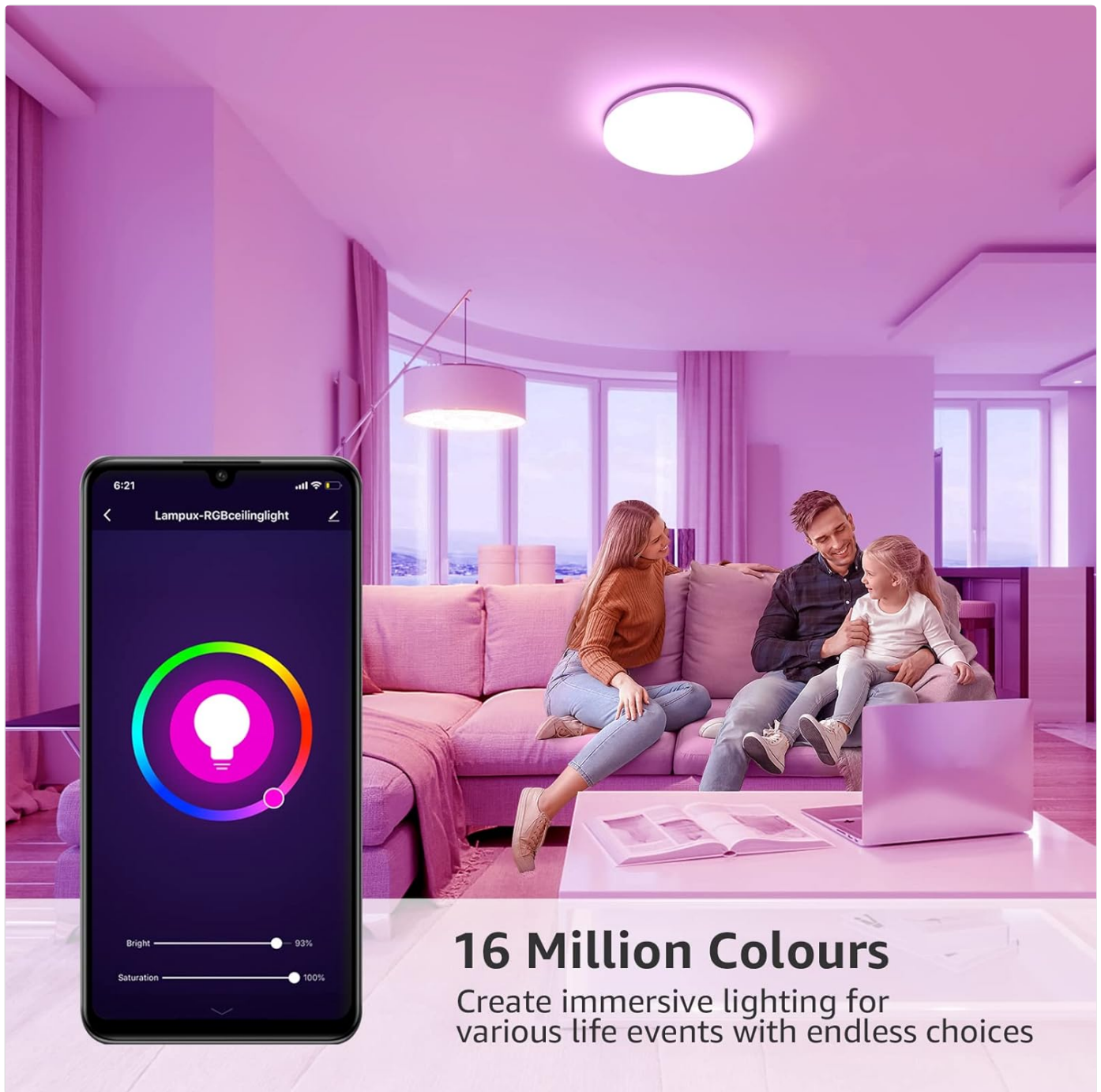
## OPERATING INSTRUCTIONS

### 1. App Control

The "Smart Life" app provides full control over your Lepro Smart LED Ceiling Light:

- **Color Selection:** Choose from over 16 million colors to create various ambiances.
- **Tunable White:** Adjust the white light temperature from warm white (2700K) to cool white (6500K).
- **Brightness Dimming:** Seamlessly dim the light from 1% to 100% brightness.
- **Scheduling:** Set custom schedules for the light to turn on or off automatically at specific times.

- **Scene Modes:** Utilize pre-set scene modes for different occasions (e.g., Party, Reading, Relax).



**16 Million Colours**  
Create immersive lighting for  
various life events with endless choices

Image: A smartphone screen showing the "Smart Life" app interface with a color wheel, brightness slider, and saturation slider, demonstrating the ability to select from 16 million colors for the ceiling light.

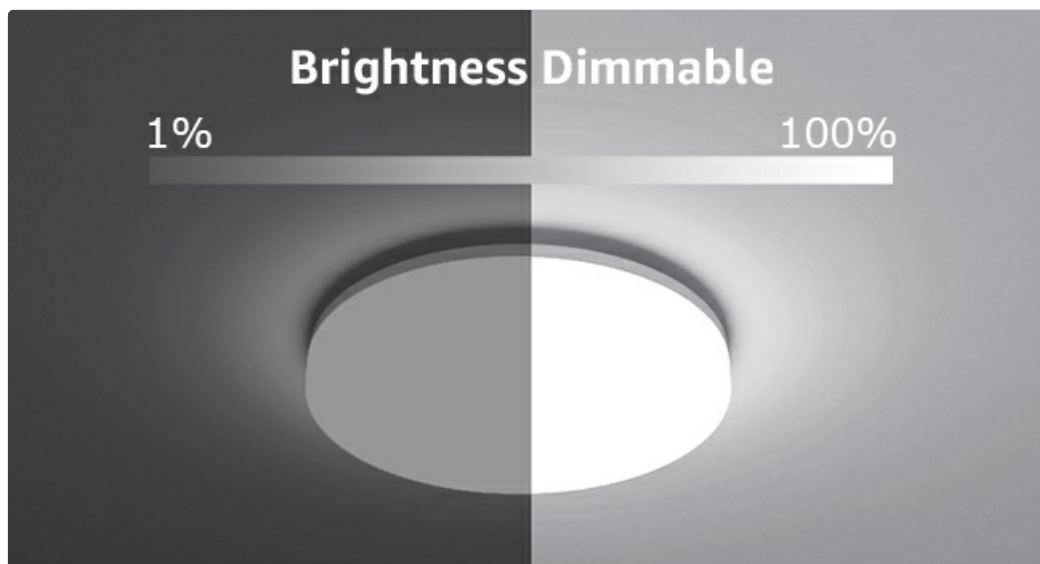


Image: A visual comparison demonstrating the tunable white feature, showing the same room illuminated with warm white (2700K), daylight white (4000K), and cool white (6500K) light temperatures.



Image: A visual representation of the brightness dimming capability, showing the light intensity adjustable from 1% to 100%.



Image: A composite image demonstrating remote control of the light from anywhere using the app, and the ability to set schedules for automatic turn-on (e.g., 9:00 AM) and turn-off (e.g., 9:00 PM).

## 2. Voice Control

Integrate your Lepro Smart LED Ceiling Light with Amazon Alexa or Google Assistant for convenient voice control:

- **Linking Accounts:** Follow the instructions in the Smart Life app to link your account with Amazon Alexa or Google Home.
- **Voice Commands:** Once linked, you can use commands such as:
  - "Alexa, turn on the ceiling light."
  - "Hey Google, set the ceiling light to warm white."
  - "Alexa, dim the ceiling light to 50%."
  - "Hey Google, change the ceiling light to blue."

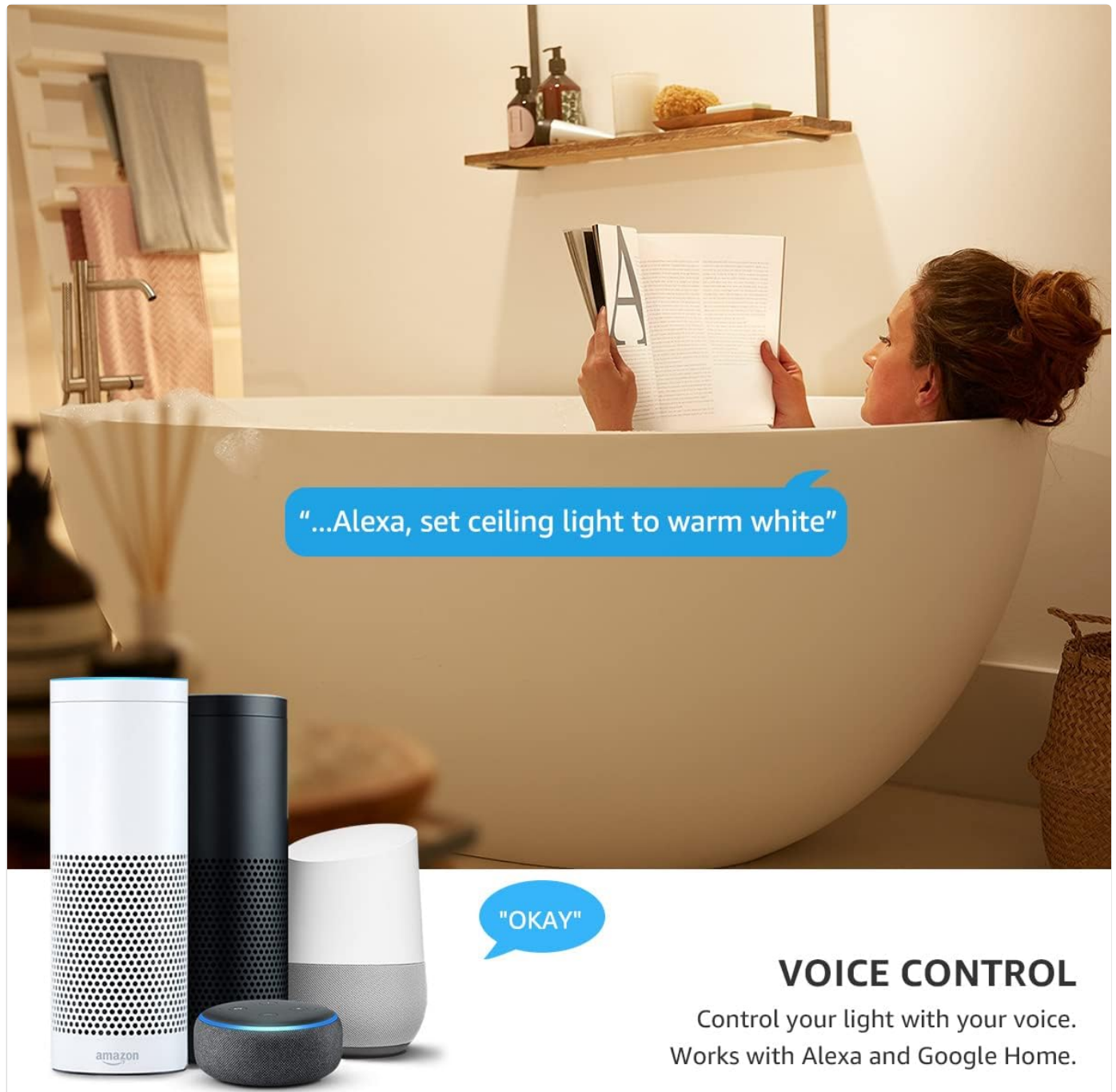


Image: A person relaxing in a bathtub, demonstrating voice control by saying, "Alexa, set ceiling light to warm white," with smart speakers (Amazon Echo and Google Home) visible, indicating compatibility.

## MAINTENANCE

To ensure the longevity and optimal performance of your Lepro Smart LED Ceiling Light, follow these simple maintenance guidelines:

- **Cleaning:**
  - Ensure the light is turned off and cooled down before cleaning.
  - Wipe the surface with a soft, dry, or slightly damp cloth.
  - Do not use abrasive cleaners, solvents, or harsh chemicals, as these can damage the finish.
- **Inspection:** Periodically check the light fixture for any signs of damage or loose connections. If any issues are found, consult a qualified electrician.
- **Water Resistance:** While IP54 rated for splashing water, avoid direct water jets or submerging the fixture.



Image: A close-up view of the light fixture's edge with water droplets, illustrating its IP54 water-resistant design, suitable for environments where splashing water may occur.

## TROUBLESHOOTING

If you encounter issues with your Lepro Smart LED Ceiling Light, refer to the following common problems and solutions:

| Problem                              | Possible Cause   | Solution   |
|--------------------------------------|--|--|
| Light does not turn on.              | No power supply; loose wiring; faulty switch.                            | Check circuit breaker. Ensure wires are securely connected. Test the light switch.   |
| Light is not blinking for pairing.   | Incorrect power cycle sequence.  | Ensure you turn the light ON and OFF three times consecutively, waiting a few seconds between each cycle.  |
| Cannot connect to Wi-Fi.             | Incorrect Wi-Fi frequency (5GHz); weak signal; wrong password.           | Ensure your router is broadcasting a 2.4GHz signal and your phone is connected to it. Move closer to the router. Double-check Wi-Fi password.                  |
| Voice control not working.           | Account not linked; incorrect device name; internet connectivity issues. | Verify that your Smart Life account is correctly linked to Alexa/Google Home. Use the exact device name configured in the app. Check your internet connection. |
| Light flickers or dims unexpectedly. | Unstable power supply; Wi-Fi interference.                               | Check household electrical system. Reduce Wi-Fi interference by moving other devices or adjusting router channels.   |

## SPECIFICATIONS

| Feature | Detail |
|---------|--------|
| Brand   | Lepro  |

| Feature                      | Detail  |
|------------------------------|---|
| Model Number                 | PR901503-RGB-EU   |
| Product Dimensions           | 8.66 x 8.66 x 2.56 cm; 580 g (Diameter: 22 cm, Height: 4.8 cm)  |
| Area Lighting Classification | IP54 (Water Resistant)  |
| Voltage                      | 240 Volts   |
| Type of Bulb                 | LED   |
| Luminous Flux                | 1250 Lumen  |
| Wattage                      | 15 Watts (100 Watts Incandescent Equivalent)  |
| Colour Temperature           | 2700K - 6500K (Tunable White)   |
| Colour Rendering Index (CRI) | 85  |
| Average Life                 | 15000 Hours   |
| Special Features             | Compatible with Alexa and Google Home, 16 million colors, Dimmable via app or voice, App remote control, Schedule on/off. |
| Connectivity                 | 2.4GHz WiFi Only  |
| Material                     | Plastic, Acrylic (Shade Material)   |
| Finish Types                 | Brushed   |
| Light Direction              | Downlight   |
| Switch Style                 | Remote (via app/voice)  |
| Switch Installation Type     | Ceiling Mount   |



Image: A diagram illustrating the compact dimensions of the Lepro Smart LED Ceiling Light, showing a diameter of 22 cm and a height of 4.8 cm.



Image: A visual comparison highlighting the energy efficiency of the 15W LED ceiling light, equivalent to a 100W incandescent bulb, demonstrating significant energy savings.

## WARRANTY AND SUPPORT

For warranty information and customer support, please refer to the documentation included with your purchase or visit the official Lepro website. Typically, warranty details and contact information for technical assistance are provided by the manufacturer.

You can also visit the [Lepro Store on Amazon](#) for more product information and support resources.