

OMIKA MKR-PL-15

OMIKA MKR-PL-15 16.5ft 50 LED Color Changing Crystal Globe String Lights User Manual

Model: MKR-PL-15 | Brand: OMIKA

1. INTRODUCTION

Thank you for choosing the OMIKA MKR-PL-15 Color Changing Crystal Globe String Lights. This product is designed to provide versatile and vibrant lighting for various indoor and outdoor decorative purposes. Featuring 50 LED crystal globe bulbs on a 16.5ft wire, these lights offer 24 RGB colors, 128 dynamic modes, and convenient control via a remote with timer and memory functions. Please read this manual thoroughly before use to ensure proper installation and operation.

2. SAFETY INFORMATION

- Ensure the power source matches the product's voltage requirements (5 Volts).
- Do not expose the USB plug or power adapter to water or extreme moisture. The string lights themselves are IP65 waterproof, but the power components are not.
- Avoid bending or twisting the wire excessively to prevent damage to the internal wiring.
- Keep out of reach of small children to prevent choking hazards from small parts.
- Unplug the lights from the power source before cleaning or when not in use for extended periods.
- Do not attempt to repair or modify the product. Contact customer support for assistance.

3. PACKAGE CONTENTS

Verify that all items are present in the package:

- 1 x OMIKA 16.5ft 50 LED Crystal Globe String Lights
- 1 x Remote Control
- 1 x 5V USB Wall Charger
- 1 x User Manual



Image 3.1: Package contents including string lights, remote, and USB wall charger.

4. SPECIFICATIONS

Feature	Detail
Model Number	MKR-PL-15
Brand	OMIKA
Light Source Type	LED
Number of LEDs	50

Item Length	16.5 Feet (5 meters)
Lead Wire Length	9.9 Feet (3 meters)
LED Spacing	3.94 inches (10 cm)
Bulb Shape Size	G25 (1 inch / 2.5 cm diameter)
Light Color Options	24 RGB Colors (16 single colors + 8 mixed colors)
Dynamic Modes	128 (including Fade, Jump, Asyn Fade, Asyn Jump, In Waves, Strobe, Twinkle, Breathing)
Brightness Levels	4 adjustable levels (25%, 50%, 75%, 100%)
Power Source	USB Powered (5V) with included wall charger
Controller Type	Remote Control
Timer Function	4H / 6H / 8H options
Memory Function	Remembers last setting
Ingress Protection (IP) Rating	IP65 (String lights only, USB plug is not waterproof)
Material	Plastic + Copper Wires
Remote Battery	1 CR2 battery required (not included)

16.5FT 50LED Globe String Lights

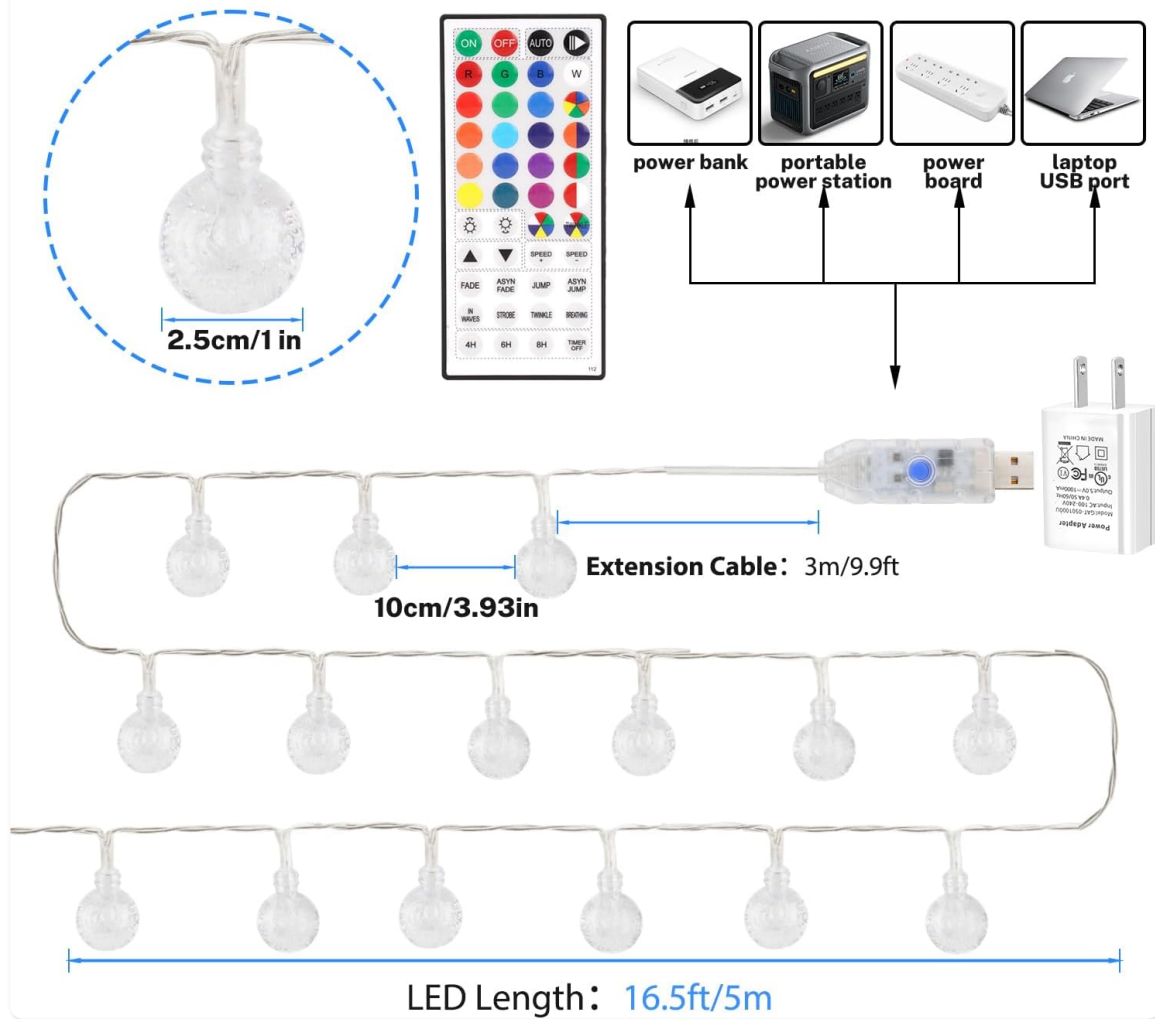


Image 4.1: Detailed dimensions and power supply options for the string lights.

5. SETUP INSTRUCTIONS

- 1. Unpack the Lights:** Carefully remove the string lights and all components from the packaging. Untangle the wire gently.
- 2. Power Connection:** Connect the USB plug of the string lights to the provided 5V USB wall charger. Plug the wall charger into a standard electrical outlet. Alternatively, the USB plug can be connected to any compatible 5V USB power source such as a power bank, portable power station, or laptop USB port.
- 3. Placement:** Arrange the string lights in your desired location. The flexible silver wire allows for easy shaping and draping. Ensure the USB plug and power adapter are in a dry location, especially if using the lights outdoors.
- 4. Remote Control Battery:** Insert one CR2 battery (not included) into the remote control. Ensure correct polarity.

Your browser does not support the video tag.

Video 5.1: Demonstration of installing the crystal globe string lights in a child's play tent.

6. OPERATING INSTRUCTIONS

The string lights are controlled using the included remote control. Point the remote directly at the USB receiver for optimal response.

6.1 Remote Control Functions



Image 6.1: Layout of the remote control buttons for various functions.

- **ON/OFF:** Press to turn the lights on or off.
- **Color Selection Buttons (R, G, B, W, and color dots):** Select from 16 single colors or 8 mixed colors.
- **Brightness Adjustment (Sun +/-):** Adjust the brightness level (4 levels: 25%, 50%, 75%, 100%).
- **Dynamic Modes:**
 - **FADE:** Colors fade in and out.
 - **JUMP:** Colors change abruptly.
 - **ASYN FADE:** Asynchronous color fading.
 - **ASYN JUMP:** Asynchronous abrupt color changes.
 - **IN WAVES:** Lights cycle through colors in a wave-like pattern.

- **STROBE:** Lights flash rapidly.
- **TWINKLE:** Lights twinkle.
- **BREATHING:** Lights slowly brighten and dim.
- **Speed Adjustment (SPEED +/-):** Adjust the speed of dynamic modes.
- **Timer Function (4H/6H/8H):** Set the lights to automatically turn off after 4, 6, or 8 hours. Press 'TIMER OFF' to cancel.
- **Memory Function:** The lights will remember the last selected color and mode when turned off and on again.

Your browser does not support the video tag.

Video 6.1: Demonstration of remote control functions, including color and mode changes.

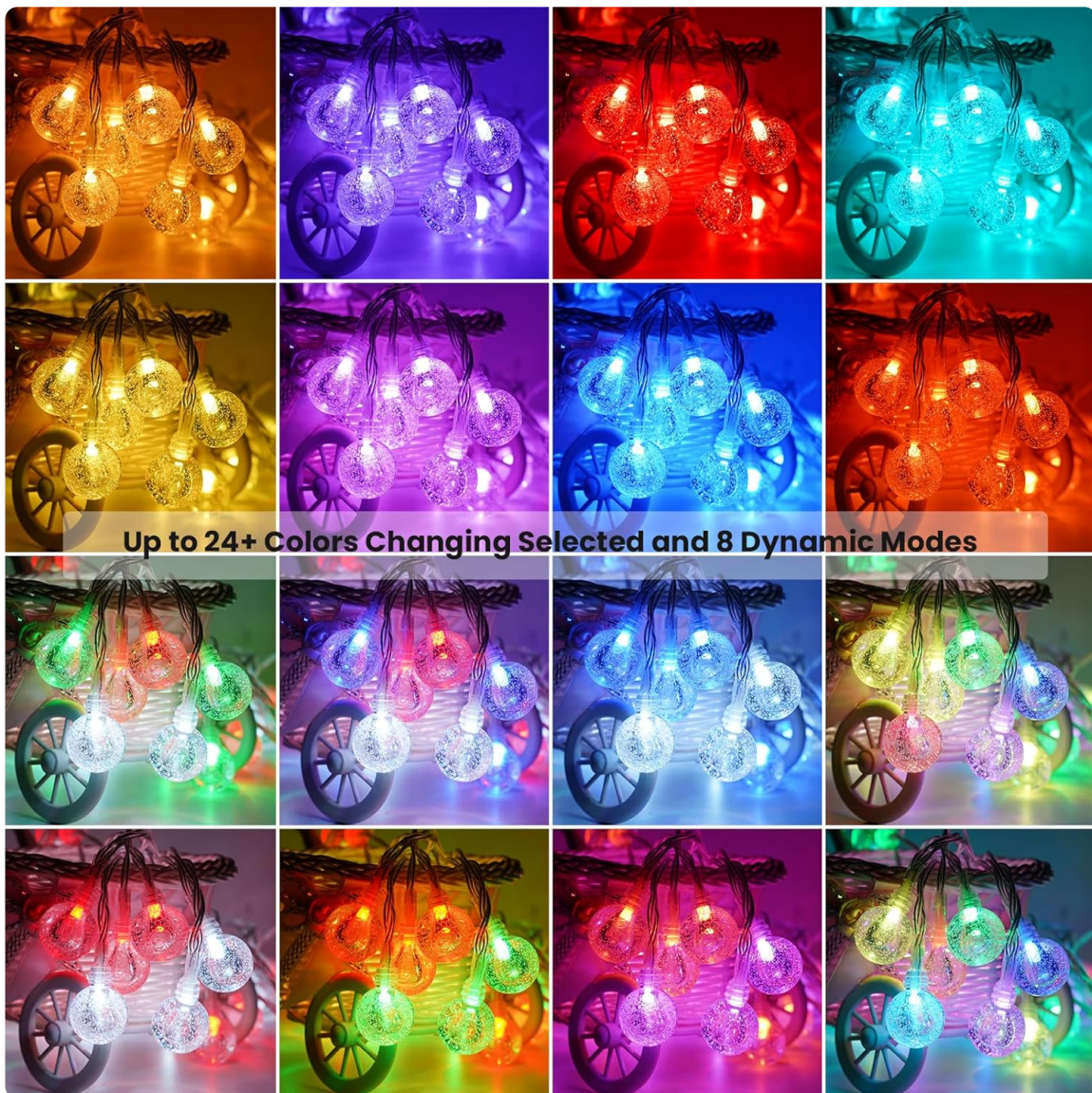


Image 6.2: Visual representation of the extensive color palette and dynamic lighting effects.

Choose 4 Levels Brightness

Dimming the Brightness to Change your mood



Image 6.3: Comparison of the four adjustable brightness levels.

7. MAINTENANCE

- **Cleaning:** Gently wipe the globe bulbs with a soft, dry cloth. Do not use harsh chemicals or abrasive cleaners.
- **Storage:** When not in use, carefully coil the string lights and store them in a cool, dry place away from direct sunlight and extreme temperatures.
- **Inspection:** Periodically inspect the wire and bulbs for any signs of damage. Discontinue use if any damage is found.

8. TROUBLESHOOTING

Problem	Possible Cause	Solution
---------	----------------	----------

Lights do not turn on.	No power, loose connection, remote battery dead.	Check power outlet, ensure USB plug is securely connected, replace remote battery.
Remote control is not working.	Remote battery dead, remote not pointed at USB receiver, obstruction.	Replace remote battery (CR2), ensure direct line of sight to USB receiver, remove any obstructions.
Lights are dim or flickering.	Low power, brightness setting too low.	Ensure adequate power supply, increase brightness using the remote.
Some bulbs are not lighting up.	Damaged bulb or wire.	Inspect the affected section for visible damage. If damaged, discontinue use and contact customer support.

9. WARRANTY AND SUPPORT

OMIKA products come with a standard manufacturer's warranty. For specific warranty details, please refer to the product packaging or contact OMIKA customer support directly. If you encounter any issues or have questions regarding your product, please reach out to our support team via the contact information provided on the product packaging or our official website.