

## Bemis 200E4 000

# Bemis Aurora Slow Close Toilet Seat Instruction Manual

Model: 200E4 000 | Brand: Bemis

## INTRODUCTION

This manual provides detailed instructions for the installation, operation, and maintenance of your Bemis Aurora Round Slow Close Toilet Seat. Designed for comfort and durability, this seat features slow-close technology, easy-clean hinges, and a secure fastening system to prevent shifting. Please read all instructions carefully before beginning installation.



Figure 1: Bemis Aurora Slow Close Toilet Seat

## PRODUCT FEATURES

- **Slow-Close Technology:** The lid and seat close slowly and quietly, preventing slamming and pinched fingers.
- **Easy Clean & Change Hinges:** Hinges allow for quick removal of the seat for thorough cleaning and easy replacement.
- **STA-TITE Seat Fastening System:** Ensures the seat remains firmly attached to the toilet bowl without shifting.
- **Super Grip Bumpers:** Additional bumpers prevent the seat from moving on the toilet bowl.

- **Precision Seat Fit:** Offers front-to-back adjustability for an optimal fit on your toilet bowl.
- **Durable Construction:** Made from solid resilient plastic with molded-in color, resisting chips, wear, and stains.



Figure 2: Key Features of the Bemis Aurora Toilet Seat

## MEASURING FOR PROPER FIT

Before installation, ensure you have the correct seat size (Round or Elongated) for your toilet bowl. The Bemis Aurora seat is designed for round bowls.

### How to Measure:

1. Measure the distance between the bolt holes at the back of your toilet bowl. Standard distance is 5.5 inches.
2. Measure from the center of the bolt holes to the front edge of the toilet bowl.
3. For a **Round** toilet, this measurement should be approximately 16.5 inches (42 cm).
4. For an **Elongated** toilet, this measurement should be approximately 18.5 inches (47 cm).

# SIZE GUIDE

Measure from the hinges of your existing seat or the bolt holes on your toilet to the front of the toilet bowl

**ROUND SEATS = 16.5 INCHES**



## No Tape Measure?

Here's an alternate measuring method using toilet paper:

Take 5 squares of toilet paper and place them over your existing toilet bowl starting between the hinges/holes and extending to the front of the bowl

**Round = 4 squares**

**Elongated = 4½ or more squares**

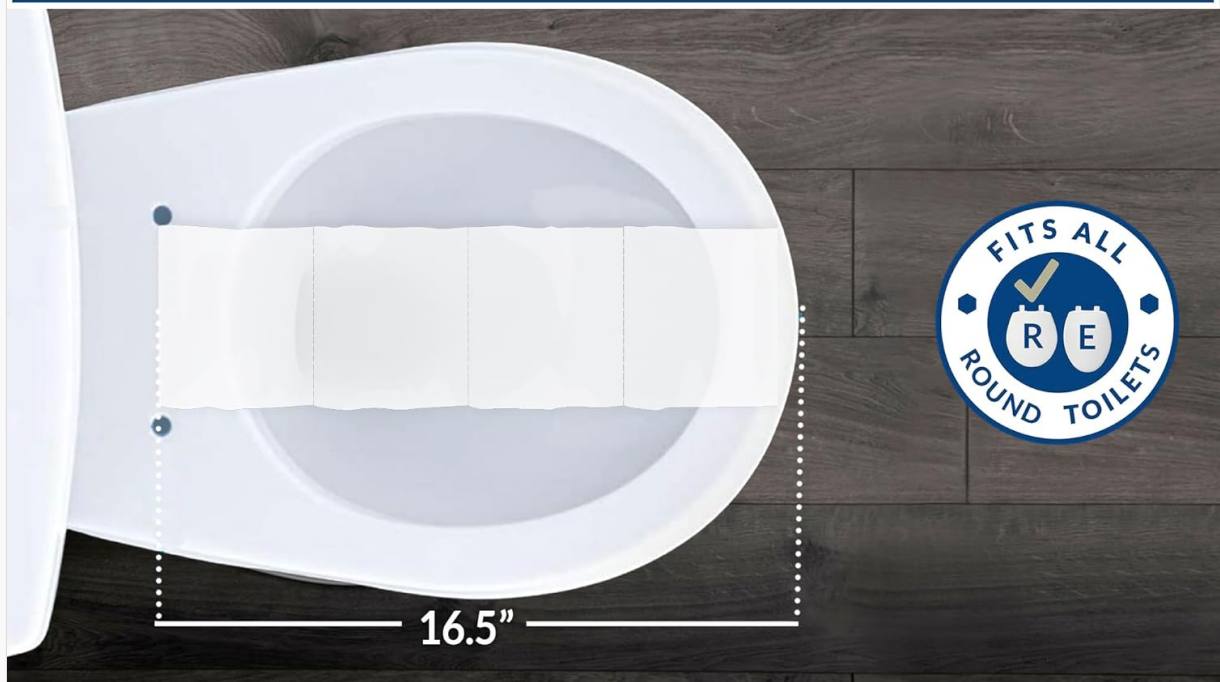


Figure 3: Toilet Seat Size Guide

Your browser does not support the video tag.

Video 1: How to Measure for Round or Elongated Toilet Seats

## INSTALLATION INSTRUCTIONS

The Bemis Aurora toilet seat features the STA-TITE Seat Fastening System for a secure installation.

### Required Tools:

- 5/8" (16mm) wrench or ratchet with a 5/8" (16mm) socket.

### Installation Steps:

1. Insert the bolts (A) with the arrow shown on the bolt head pointing towards the front of the toilet.
2. Open the hinge caps on the seat.
3. Place the seat onto the toilet bowl, aligning the hinges with the bolts.
4. From underneath the toilet bowl, lightly finger-tighten the nuts (B) onto the bolts.
5. Adjust the seat for a perfect front-to-back fit on the toilet bowl.

6. While holding the seat centered, tighten the nuts (B) with a 5/8" (16mm) wrench or socket until the bottom portion of the nut snaps off. Discard the snapped-off portion. This indicates proper tightening.
7. Close the hinge caps.

# Easy Installation



Watch the installation video on this page for more detail

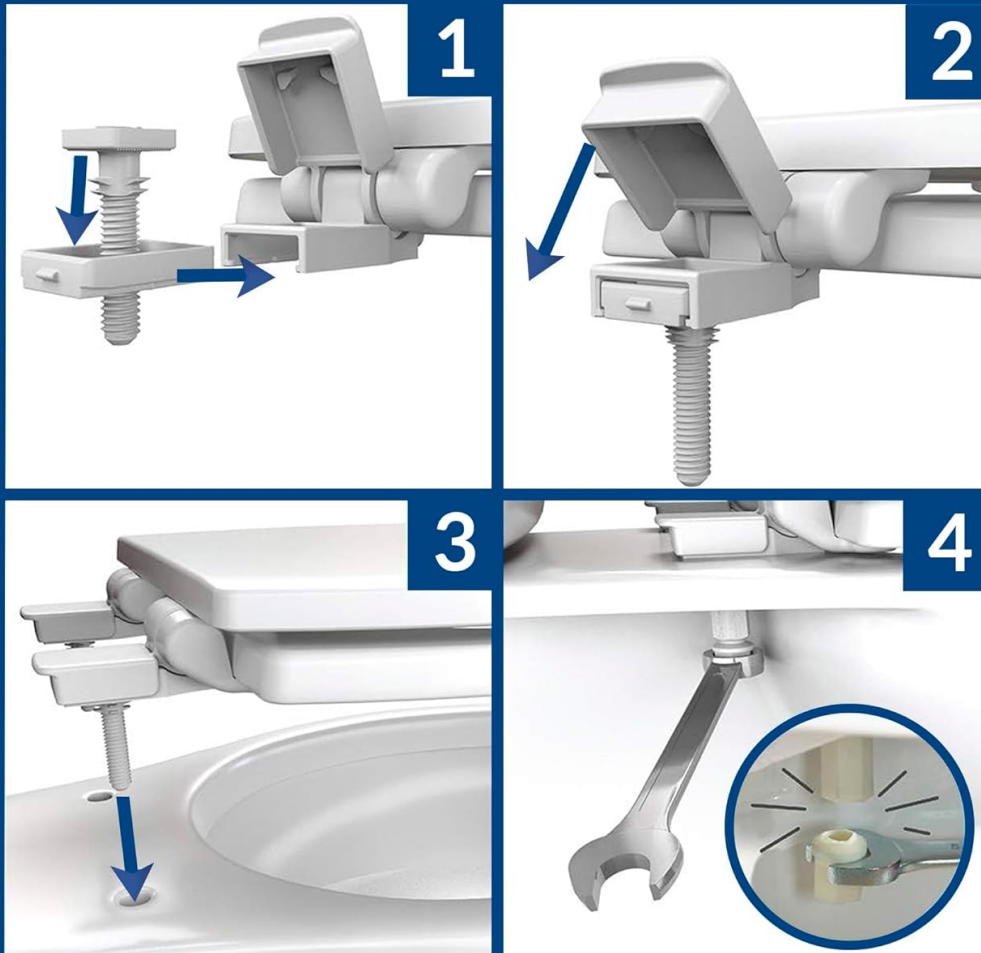


Figure 4: Easy Installation Steps

Your browser does not support the video tag.

Video 2: Flip Cap Hinge Seat Installation Guide

Your browser does not support the video tag.

Video 3: Adjustability for the Perfect Bowl Fit

## OPERATING INSTRUCTIONS

The primary operation of this toilet seat involves its slow-close feature. To engage the slow-close mechanism, simply push the lid or seat down gently. It will then lower itself slowly and quietly without requiring manual guidance.

Your browser does not support the video tag.

Video 4: Whisper Close for No Pinched Fingers



## MAINTENANCE AND CLEANING

Regular cleaning will help maintain the glossy finish and extend the life of your toilet seat.

### Cleaning Instructions:

- To clean, simply lift the hinge caps and slide the seat forward to remove it from the toilet bowl.
- Use gentle cleaners such as anti-bacterial wipes, dish soap, or anti-bacterial hand soap.
- Wipe the seat and hinges thoroughly, then rinse with water and dry with a soft cloth.
- **DO NOT USE BLEACH OR HARSH CHEMICALS** as these can damage the finish.
- Reattach the seat by aligning it with the bolts and closing the hinge caps.





### SLOW CLOSE FEATURE

Seat must be installed on toilet bowl  
**BEFORE**  
the Slow Close mechanism will function.



### CLEANING YOUR TOILET SEAT

To preserve your seat's glossy finish,  
we recommend cleaning with either:

- Anti-bacterial wipes
- Dish soap
- Anti-bacterial hand soap

**Do Not Use  
Bleach or Harsh Chemicals**

Figure 5: Cleaning Your Toilet Seat

Your browser does not support the video tag.

Video 5: Easy Clean and Change Flip Cap Hinges

## TROUBLESHOOTING

- **Seat Shifts or Wobbles:** Ensure the STA-TITE nuts were tightened correctly until the bottom portion

snapped off. If the seat still shifts, re-check the tightness of the bolts. The design is intended to prevent loosening.

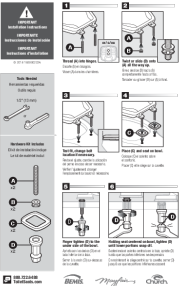

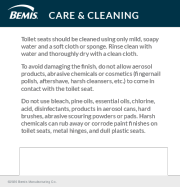
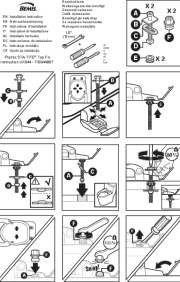
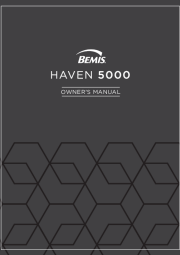
- **Slow-Close Not Functioning:** Verify that the seat is properly installed and the hinges are not obstructed. The slow-close mechanism requires the seat to be fully installed on the toilet bowl to function correctly.
- **Difficulty Accessing Nuts:** Some toilet designs may have enclosed areas making it difficult to access the nuts from underneath. In such cases, specialized tools or alternative mounting hardware might be required, or consult a professional.

### SPECIFICATIONS

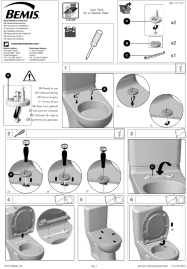
Attribute	Detail
Brand	Bemis
Model Number	200E4 000
Color	White
Material	Plastic
Shape	Round
Product Dimensions	17.37"L x 14.38"W
Item Weight	4.18 pounds (1.9 Kilograms)
UPC	073088156570
Included Components	(1) Toilet Seat & Hardware

### WARRANTY AND SUPPORT

The manufacturer warranty covers US and Canada customer purchases for 1 year from the date of purchase. For warranty claims or technical support, please refer to the contact information provided on the product packaging or visit the official Bemis website.

 <p>The image shows the first page of the Bemis Toilet Seat Installation Instructions. It features a warning icon at the top left, followed by a series of numbered diagrams (1 through 10) illustrating the step-by-step process of installing the toilet seat. The diagrams show how to attach the hinges, secure the seat to the bowl, and adjust the tension. The text is in English, Spanish, and French.</p>	<p><a href="#">Bemis Toilet Seat Installation Instructions</a></p> <p>Comprehensive installation guide for Bemis toilet seats, providing step-by-step instructions, hardware details, and necessary tools. Supports English, Spanish, and French.</p>
 <p>The image shows the front view of the Bemis Haven 2000 Bidet Seat. It is a white, elongated bidet seat with a modern, sleek design. The text 'BEMIS HAVEN 2000' and 'HV2000E   HV2000R' is printed above the seat.</p>	<p><a href="#">Bemis Haven 2000 Bidet Seat: Installation, Operation, and Maintenance Manual</a></p> <p>Comprehensive guide for installing, operating, cleaning, and troubleshooting the Bemis Haven 2000 Bidet Seat (models HV2000E, HV2000R). Includes safety precautions, parts list, step-by-step instructions, and specifications.</p>
 <p>The image shows the 'CARE &amp; CLEANING' section of the Bemis manual. It includes a list of cleaning instructions and warnings. The text is in English, Spanish, and French. It advises using mild soap and water for cleaning and avoiding harsh chemicals or abrasive cleaners.</p>	<p><a href="#">Bemis Toilet Seat Care and Cleaning Guide</a></p> <p>Comprehensive instructions on how to properly care for and clean Bemis toilet seats, detailing recommended cleaning agents and methods to avoid damaging the finish.</p>
 <p>The image shows the first page of the Bemis STA-TITE® Top Fix Toilet Seat Installation Guide. It features a series of numbered diagrams (1 through 10) illustrating the step-by-step process of installing the toilet seat. The diagrams show how to attach the hinges, secure the seat to the bowl, and adjust the tension. The text is in English, Spanish, and French.</p>	<p><a href="#">Bemis STA-TITE® Top Fix Toilet Seat Installation Guide</a></p> <p>Comprehensive installation instructions for the Bemis STA-TITE® Top Fix toilet seat, including required tools, parts list, step-by-step assembly, cleaning advice, and warranty information. Features clear textual descriptions of diagrams.</p>
 <p>The image shows the cover of the Bemis Haven 5000 Owner's Manual. It is a dark-colored manual with the Bemis logo and 'HAVEN 5000 OWNER'S MANUAL' printed on it.</p>	<p><a href="#">Bemis Haven 5000 Owner's Manual: Installation, Operation, and Specifications</a></p> <p>Comprehensive owner's manual for the Bemis Haven 5000 bidet seat, covering installation, product features, maintenance, warranty, and technical specifications.</p>





[Bemis Toilet Seat Installation Guide and Maintenance](#)

Comprehensive installation instructions and maintenance guide for Bemis toilet seats, featuring the 'Just Click' system for easy cleaning. Learn how to install, clean, and care for your Bemis toilet seat.