



Manuals.plus /

› KEDSUM /

› KEDSUM 660GPH Submersible Water Pump User Manual

## KEDSUM 660GPH

# KEDSUM 660GPH Submersible Water Pump User Manual

Model: 660GPH

[Introduction](#)   [Safety Information](#)   [Product](#)  
[Overview](#)   [Setup](#)   [Operation](#)   [Maintenance](#)   [Troubleshooting](#)   [Warranty & Support](#)

## 1. INTRODUCTION

---

This manual provides comprehensive instructions for the safe and efficient operation, setup, and maintenance of your KEDSUM 660GPH Submersible Water Pump. Designed for versatility, this ultra-quiet pump is ideal for various aquatic applications including fish tanks, ponds, aquariums, statuary, and hydroponic systems. Please read this manual thoroughly before initial use to ensure optimal performance and longevity of your pump.



Figure 1.1: Applications of the KEDSUM 660GPH Submersible Water Pump, including fountains, aquariums, hydroponics, and ponds.

## 2. SAFETY INFORMATION

Adherence to the following safety guidelines is crucial for preventing injury and damage to the pump. Please read and understand all warnings before operating the device.

- The operating temperature range: 0-115°F (approximately -17.8°C to 46.1°C). Do not operate outside this range.
- Before purchasing, verify that the water level and layout of your tank or system are compatible with the pump's power. An imbalance (e.g., too little water with high motor power) can lead to loud noises from splashing water. Different pumps are suited for different water tank sizes and types.
- **Prohibit no-load running:** Always ensure the pump is fully submerged in water before connecting it to a power supply. Operating the pump in air for extended periods will shorten its lifespan and can cause loud noises.
- When performing maintenance or changing water, always disconnect the power supply to the pump first.
- If the pump suddenly stops working or begins to make unusual noises, it may be due to debris blockage. Refer to the

Maintenance section for cleaning instructions. Regular cleaning (approximately every two months) is recommended. Applying a small amount of olive oil to the rotor after cleaning can help maintain smooth operation.

- A small amount of residual water may be present in the pump upon receipt. This is normal and results from professional water testing conducted by the manufacturer prior to shipment to ensure product quality.
- The maximum flow rate is 660 GPH (2500 L/H). Actual flow rates may vary due to factors such as insufficient power supply, incorrect frequency, or connection to water pipes. If water is sprayed out of the container, the effective flow rate will also be less than the maximum.
- If using this water pump for sensitive fish or plants, ensure to thoroughly clean any assembly oil off the impeller and inside the pump before installation.

### 3. PRODUCT OVERVIEW

---

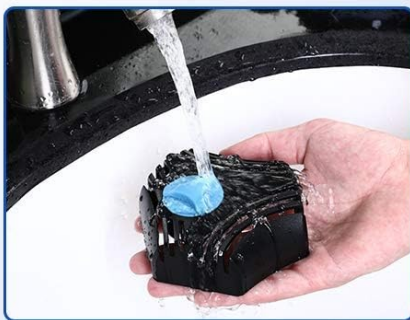
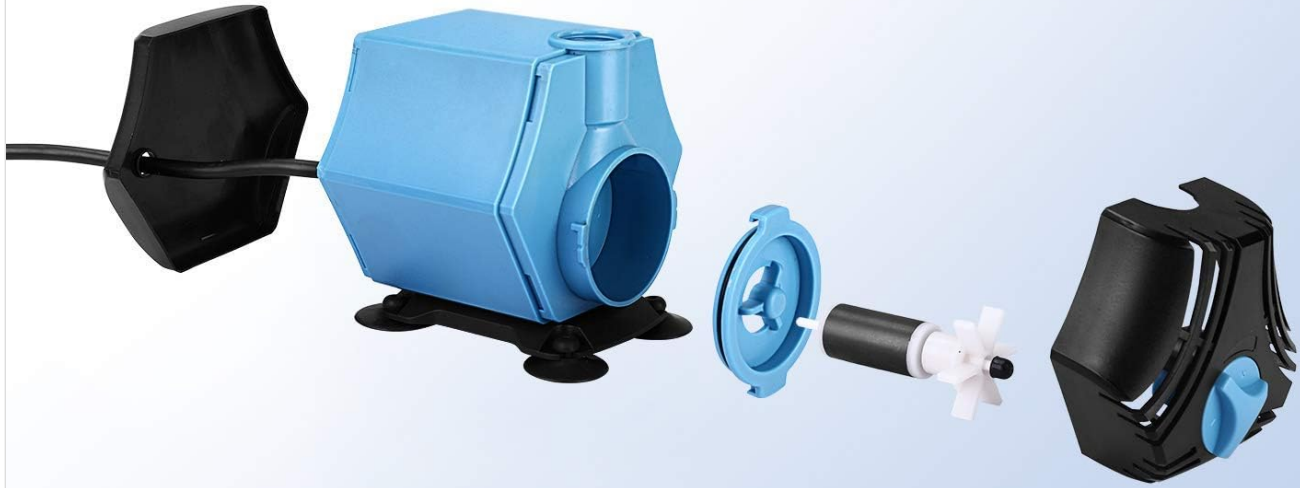
#### 3.1. Components

The KEDSUM 660GPH Submersible Water Pump consists of the main pump body, a power cord with a grounded three-pronged plug, and various outlet adapters for different flow requirements. The pump features an adjustable flow knob and suction cups for secure mounting.

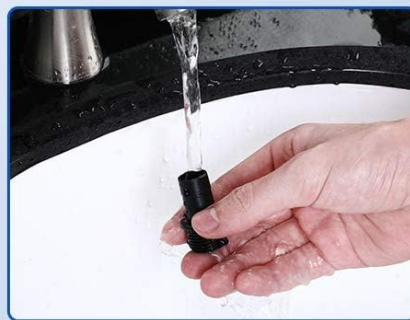


Figure 3.1: KEDSUM 660GPH Submersible Water Pump with included accessories.

# EASY TO CLEAN



**PART 1** FILTER COVER



**PART 2** OUTLET NOZZLE



**PART 3** MOTOR

Figure 3.2: Exploded view of pump components for maintenance.

## 3.2. Specifications

Feature	Specification
Model	660GPH
Dimensions (L x W x H)	4.3 x 3.5 x 3.9 inches (10.9 x 8.9 x 9.9 cm)
Max Flow Rate	660 GPH (2500 L/H)
Max Lift Height	Up to 9.8 Feet (3 meters)
Power	50W
Voltage	110V
Power Cord Length	6.6 Feet (2 meters) UL certified
Outlet Adapters	1/2 inch, 5/8 inch, 3/4 inch
Material	Acrylonitrile Butadiene Styrene (ABS)
Color	Blue
Weight	2.92 pounds (1.32 kg)

# PUMP SIZE

Medium size and blue color make it easier to hide or disguise



Figure 3.3: Pump dimensions and nozzle adapter sizes.

## 4. SETUP INSTRUCTIONS

- 1. Unpack the Pump:** Carefully remove the pump and all accessories from the packaging. Inspect for any signs of damage.
- 2. Select and Attach Nozzle:** Choose the appropriate outlet adapter (1/2 inch, 5/8 inch, or 3/4 inch) based on your application's flow requirements. Securely attach it to the pump's outlet.
- 3. Position the Pump:** Place the pump in the desired location within your aquarium, pond, fountain, or hydroponic system. Ensure it is fully submerged in water. The integrated suction cups on the base can be used to secure the pump to a smooth surface, such as the bottom or side of a glass tank.
- 4. Connect Power:** Once the pump is fully submerged, plug the 6.6ft UL certified power cord into a grounded 110V electrical outlet.
- 5. Adjust Water Flow (Optional):** The pump features an adjustable knob to control the water flow rate. Turn the knob to increase or decrease the flow as needed for your specific application.

# POWERFUL & ADJUSTABLE WATER FLOW

High performance motor elevate column of water up to 9.8ft while the adjustable knob allow you to control the water flow rate



Connecting the water pipe to the nozzle for highest lift



Adjustable Knob



Ground Power Cord 6.6ft



Max Flow Rate:  
800GPH(3000L/H)



Max Lift Height: up to 9.8ft

Figure 4.1: Adjustable flow knob and power cord details.

## 5. OPERATING INSTRUCTIONS

The KEDSUM 660GPH Submersible Water Pump is designed for continuous operation once properly set up and submerged.

- **Power On/Off:** The pump will begin operating immediately upon being plugged into a live electrical outlet. To turn off the pump, simply unplug it from the power source.
- **Flow Adjustment:** Use the adjustable knob located on the front of the pump to fine-tune the water flow. Rotate the knob clockwise to increase flow and counter-clockwise to decrease flow.
- **Monitoring:** Periodically check the pump's operation to ensure it is fully submerged and free from obstructions.



Figure 5.1: The pump operating quietly in an aquarium environment.

## 6. MAINTENANCE

---

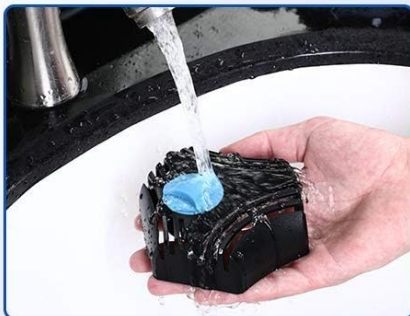
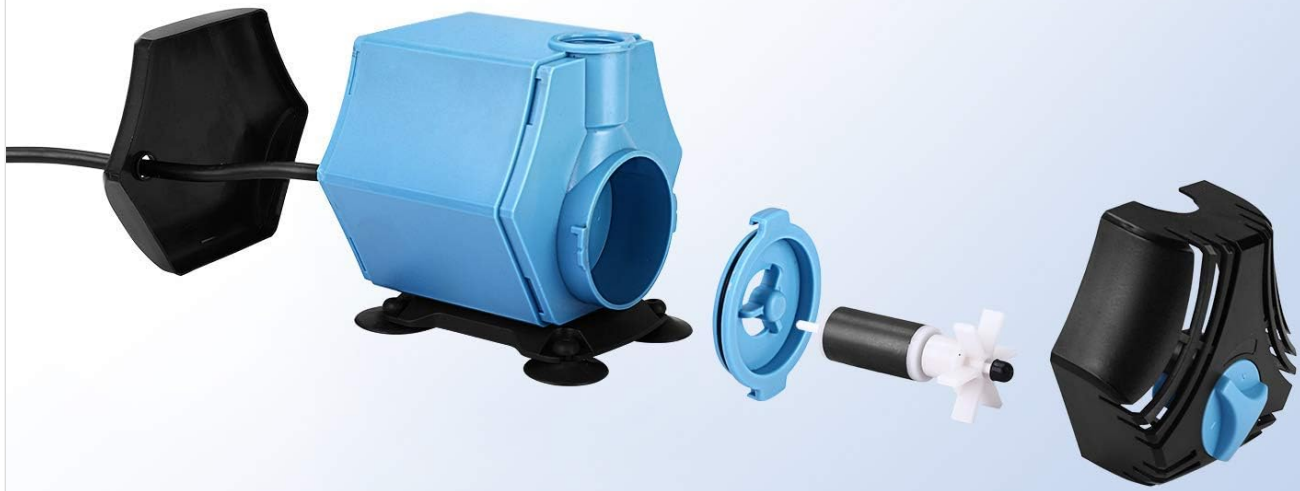
Regular maintenance is essential to ensure the longevity and efficient performance of your KEDSUM water pump. It is recommended to clean the pump approximately every two months, or more frequently if operating in environments with high debris.

1. **Disconnect Power:** Always unplug the pump from the electrical outlet before attempting any cleaning or maintenance.
2. **Remove from Water:** Carefully remove the pump from its submerged location.
3. **Disassemble for Cleaning:**
  - a. **Part 1: Filter Cover:** Remove the filter cover (typically the front intake grill) by gently prying or unsnapping it. Clean any accumulated debris from the cover.
  - b. **Part 2: Outlet Nozzle:** Detach the outlet nozzle and clean any blockages.
  - c. **Part 3: Motor/Impeller:** Access the impeller chamber, usually by removing a cover near the outlet. Carefully remove the impeller. Clean the impeller and its housing thoroughly to remove any slime, algae, or debris. A small brush can

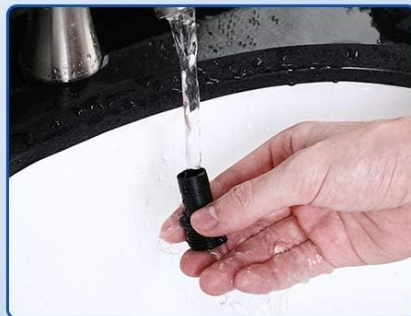
be helpful.

4. **Lubrication (Optional):** After cleaning, you may apply a small amount of olive oil to the rotor (impeller shaft) to ensure smooth operation upon reassembly.
5. **Reassemble and Test:** Reassemble all parts in reverse order. Ensure all components are securely fitted. Submerge the pump completely in water and then reconnect power to test its operation.

## EASY TO CLEAN



**PART 1** FILTER COVER



**PART 2** OUTLET NOZZLE



**PART 3** MOTOR

Figure 6.1: Step-by-step guide for cleaning pump components.

## 7. TROUBLESHOOTING

This section addresses common issues you might encounter with your KEDSUM 660GPH Submersible Water Pump.

Problem	Possible Cause(s)	Solution
Pump does not turn on.	<ul style="list-style-type: none"> <li>No power to the outlet.</li> <li>Pump not fully submerged.</li> <li>Power cord or plug damaged.</li> <li>Internal blockage.</li> </ul>	<ul style="list-style-type: none"> <li>Check power outlet with another device.</li> <li>Ensure pump is completely underwater.</li> <li>Inspect cord/plug for damage; replace if necessary.</li> <li>Unplug, disassemble, and clean the impeller and housing (refer to Maintenance).</li> </ul>
Pump is running but flow is weak or inconsistent.	<ul style="list-style-type: none"> <li>Partial blockage in impeller or nozzle.</li> <li>Water level too low.</li> <li>Adjustable flow knob set too low.</li> <li>Insufficient power or incorrect frequency.</li> <li>Air trapped in the pump.</li> </ul>	<ul style="list-style-type: none"> <li>Unplug and clean the pump thoroughly (refer to Maintenance).</li> <li>Ensure adequate water level for full submersion.</li> <li>Adjust the flow knob to a higher setting.</li> <li>Verify power supply meets 110V requirements.</li> <li>Gently tilt the pump while submerged to release trapped air.</li> </ul>
Pump is making loud noises.	<ul style="list-style-type: none"> <li>Debris blockage in impeller.</li> <li>Pump running dry (not submerged).</li> <li>Water level too low, causing splashing.</li> <li>Pump not placed on a stable surface.</li> </ul>	<ul style="list-style-type: none"> <li>Unplug and clean the impeller and housing.</li> <li>Ensure pump is fully submerged before plugging in.</li> <li>Increase water level or adjust pump position.</li> <li>Secure the pump using its suction cups on a flat, stable surface.</li> </ul>

## 8. WARRANTY AND SUPPORT

---

KEDSUM stands behind the quality of its products. If you encounter any issues or have questions regarding your KEDSUM 660GPH Submersible Water Pump, please do not hesitate to contact KEDSUM customer support. We are committed to providing assistance and ensuring your satisfaction with our products.

For support, please visit the official KEDSUM store or contact their customer service channels. Refer to your purchase documentation for specific contact details or visit the KEDSUM brand store online: **KEDSUM Brand Store**.

