

tiiwee GH-GAVF-PVNF

Portable Door Stopper Wedge Alarm User Manual

Model: GH-GAVF-PVNF | Brand: tiiwee

PRODUCT OVERVIEW

The tiiwee Portable Door Stopper Wedge Alarm is a versatile security device designed to provide an additional layer of protection for your home or while traveling. It functions as both a physical door jammer and an acoustic alarm, deterring unauthorized entry by emitting a loud siren when the door is opened.

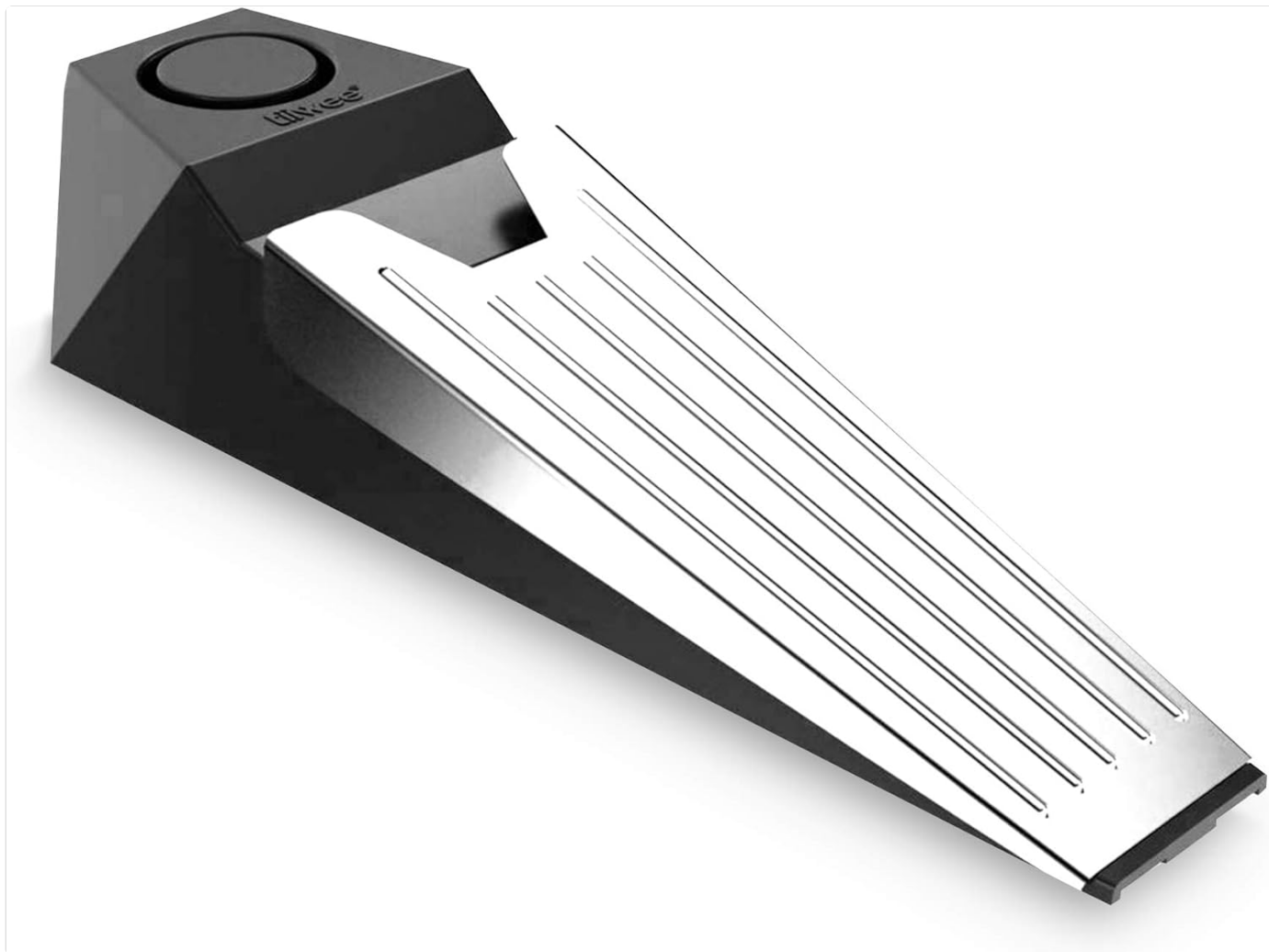


Image: The tiiwee Portable Door Stopper Wedge Alarm, a black wedge-shaped device with a silver metal plate on top, designed to be placed under a door.

IMPORTANT SAFETY INFORMATION

Please read and understand all safety instructions before using the product. Failure to do so may result in injury or damage to the product.

- This product is a home alarm system and should only be operated by adults. It is not suitable for use by children.
- **Risk of personal injury:** Prolonged exposure to the alarm siren may cause permanent hearing loss.
- Before use, please inspect the product for any visible signs of damage. If you notice any damage, refrain from using the product and contact Tiiwee customer service at info@tiiwee.com.
- This product is intended for indoor use only, unless specifically indicated for outdoor use.
- Do not make any technical modifications to the product.
- Do not attempt to perform repairs yourself. For any repair needs, please contact Tiiwee customer service at info@tiiwee.com.
- For battery-operated devices, follow the recommended battery life guidelines and regularly check the system's functionality to maintain consistent operation of the home alarm system.

SETUP

1. Battery Installation

The tiiwee Door Stopper Alarm requires one 9V battery (included). Ensure the battery is inserted correctly for proper operation.

1. Locate the battery compartment on the underside of the device.
2. Slide the battery compartment cover to open it.
3. Insert the 9V battery, ensuring the positive (+) and negative (-) terminals align with the markings inside the compartment.
4. Close the battery compartment cover securely.

tiiwee®



EASY LOADING BATTERY COMPARTMENT

IT JUST TAKES A CLICK TO OPEN IT

Image: The underside of the door stopper alarm with the battery compartment open, showing where to insert the 9V battery.



Image: The tiivee door stopper alarm next to a 9V battery, illustrating the battery type required.

2. Placement

For optimal performance, place the door stopper alarm firmly under the door you wish to secure. Ensure the distance between the bottom of the door and the floor is at least 0.8 cm (approximately 0.3 inches) for the wedge to fit properly.

tiiwee®

**PERFECT FOR ANY
TYPE OF SURFACES**

Image: Two views of the door stopper alarm, one on a carpeted floor and another on a tiled floor, demonstrating its adaptability to various surfaces.



Image: The door stopper alarm positioned securely under a closed wooden door, ready to detect movement.

OPERATING INSTRUCTIONS

The tiiwee Door Stopper Alarm is designed for simple and effective operation.

1. **Power On/Off:** Locate the ON/OFF switch on the side of the device. Slide the switch to the "ON" position to activate the alarm. Slide it to "OFF" to deactivate.
2. **Placement:** Place the alarm firmly under the door you wish to secure, with the metal plate facing upwards and towards the door. Ensure the door cannot open without pressing down on the metal plate.
3. **Alarm Activation:** When an attempt is made to open the door, the pressure from the door will depress the metal plate, triggering a loud 110dB siren. The alarm will continue to sound until the pressure is released or the device is switched to the "OFF" position.



Image: A detailed view of the ON/OFF switch and the small LED indicator light on the side of the tiivee door stopper alarm.



STRONG
BUILD QUALITY
WITH ABS PLASTIC
MATERIAL

LOUD
110 DB
SIREN

LOW
BATTERY
INDICATOR

EASY
LOADING
BATTERY
COMPARTMENT

FIT FOR
ALL SURFACES

ANTI-SLIP
SURFACE



Image: An infographic highlighting key features of the alarm, including strong build quality, 110dB siren, low battery indicator, easy loading battery compartment, fit for all surfaces, and anti-slip surface.

MAINTENANCE

Battery Replacement

When the alarm's sound becomes weak or the low battery indicator (if present) illuminates, it's time to replace the 9V battery. Follow the battery installation steps outlined in the "Setup" section.

Cleaning

To clean your tiiwee Door Stopper Alarm:

- Ensure the device is switched to the "OFF" position and remove the battery before cleaning.
- Use a dry, soft cloth to wipe down the exterior of the device.
- Do not use abrasive cleaners, solvents, or immerse the device in water.

TROUBLESHOOTING

Problem	Possible Cause	Solution
Alarm does not sound or is weak.	Battery is low or incorrectly installed.	Replace the 9V battery. Ensure it is inserted with correct polarity.
Alarm triggers too easily or not at all.	Incorrect placement under the door.	Adjust the position of the alarm. Ensure the door's bottom edge makes firm contact with the metal plate when opened. Verify door-to-floor clearance is at least 0.8cm.
Device does not turn on.	Battery is dead or missing. Switch is in "OFF" position.	Install a fresh 9V battery. Ensure the ON/OFF switch is in the "ON" position.

If you experience issues not covered here, please contact Tiiwee customer service for assistance.

SPECIFICATIONS

Feature	Detail
Brand	tiiwee
Model Number	GH-GAVF-PVNF
Mounting Type	Floor Mount
Color	Black
Alarm Volume	110 dB
Power Source	1 x 9V Battery (included)
Item Weight	7.4 ounces (approx. 210 grams)
Package Dimensions	7.68 x 2.76 x 1.85 inches (approx. 19.5 x 7 x 4.7 cm)
Minimum Door Clearance	0.8 cm (0.3 inches)
GTIN (UPC)	08719324910446

Información importante – ¡Tenga en cuenta!

- Este producto es un sistema de alarma para el hogar y solo debe ser utilizado por adultos. No es apto para el uso por parte de niños.
- Riesgo de lesiones personales: la exposición prolongada a la sirena de alarma puede provocar una pérdida de audición permanente.
- Antes de usarlo, inspeccione el producto para detectar cualquier signo visible de daño. Si nota algún daño, no utilice el producto y póngase en contacto con el servicio de atención al cliente de Tiiwee en info@tiiwee.com.
- Este producto está destinado únicamente para uso en interiores, a menos que se indique específicamente que es apto para uso en exteriores.
- Antes de limpiar el producto, asegúrese de retirar las baterías o de desconectar la fuente de alimentación. Use un paño seco para la limpieza.
- No realice ninguna modificación técnica en el producto.
- No intente realizar reparaciones por su cuenta. Para cualquier necesidad de reparación, póngase en contacto con el servicio de atención al cliente de Tiiwee en info@tiiwee.com.
- Para los dispositivos que funcionan con batería, siga las recomendaciones sobre la duración de la batería y revise regularmente la funcionalidad del sistema para garantizar un funcionamiento constante del sistema de alarma para el hogar.

Belangrijke informatie – Let op!

- Dit product is een alarmsysteem voor thuis en mag alleen door volwassenen worden bediend. Het is niet geschikt voor gebruik door kinderen.
- Risico op persoonlijk letsel: langdurige blootstelling aan de alarmsirene kan blijvend gehoorverlies veroorzaken.
- Inspecteer het product vóór gebruik op zichtbare tekenen van schade. Als u schade opmerkt, gebruik het product dan niet en neem contact op met de Tiiwee klantenservice via info@tiiwee.com.
- Dit product is alleen bedoeld voor gebruik binnenshuis, tenzij specifiek aangegeven voor gebruik buitenshuis.
- Zorg ervoor dat de batterijen zijn verwijderd of de stroomvoorziening is losgekoppeld voordat u het product schoonmaakt. Gebruik een droge doek voor de reiniging.
- Breng geen technische wijzigingen aan het product aan.
- Probeer niet zelf reparaties uit te voeren. Neem voor reparaties contact op met de Tiiwee klantenservice via info@tiiwee.com.
- Voor batterijgevoede apparaten, volg de aanbevolen richtlijnen voor de levensduur van de batterij en controleer regelmatig de functionaliteit van het systeem om een constante werking van het alarmsysteem voor thuis te waarborgen.

Image: Product label showing model number TWDS03 (note: product JSON has GH-GAVF-PVNF, the manual uses GH-GAVF-PVNF), battery type, manufacturer contact, and GTIN.

WARRANTY AND SUPPORT

Warranty Information

This product comes with a 30-day money-back guarantee. If you are not satisfied with your purchase, you may return the item within 30 days for a full refund.

Customer Support

For any questions, technical assistance, or warranty claims, please contact Tiiwee customer service:

Email: info@tiiwee.com

Manufacturer: Tiiwee B.V.

Address: Olof Palmeborg 190, 3124TS Schiedam, The Netherlands