

IIWEY Joycon Joystick Replacement Kit

IIWEY Joycon Joystick Replacement Kit for Nintendo Switch & Switch Lite - Instruction Manual

Comprehensive instruction manual for the IIWEY Joycon Joystick Replacement Kit, compatible with Nintendo Switch and Switch Lite controllers. Learn how to fix joystick drift and replace components with detailed steps.

INTRODUCTION

This manual provides detailed instructions for replacing the joystick and slider locks on your Nintendo Switch Joy-Con or Switch Lite controllers using the IIWEY Joycon Joystick Replacement Kit. Please read all instructions carefully before beginning the repair process to ensure proper installation and avoid damage to your device.

SAFETY INFORMATION

- Always power off your Nintendo Switch console and Joy-Con controllers completely before starting any repair.
- Handle small components and delicate ribbon cables with extreme care to prevent damage.
- Use appropriate tools as specified to avoid stripping screws or damaging plastic casings.
- Keep all small parts out of reach of children.
- If you are unsure about any step, seek professional assistance.

SETUP AND PACKAGE CONTENTS

Before you begin, ensure all components listed below are present in your IIWEY Joycon Joystick Replacement Kit. A clean, well-lit workspace is recommended.



Figure 1: Overview of the IIWEY Joycon Joystick Replacement Kit components. This kit includes two replacement joysticks, two metal slider locks, various screws, two screwdrivers (Y1.5 and +1.5), tweezers, and two thumb stick caps.

Kit Contents:

- 2 x Replacement Joysticks (Analog Thumb Sticks)
- 2 x Joy-Con Metal Slider Locks (Left & Right)
- 4 x "Y" 1.5 Tri-wing Screws
- 1 x "Y" 1.5 Tri-wing Screwdriver
- 1 x "+" 1.5 Cross Screwdriver
- 2 x Springs
- 2 x Thumb Stick Caps
- 1 x Tweezers
- 1 x Pry Tool

RIGHT TOOLS + BACKUP SCREWS

BACKUP SCREW

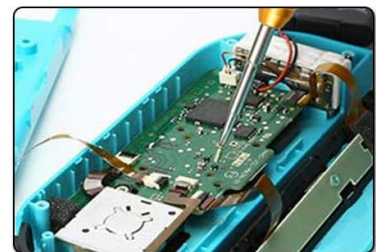
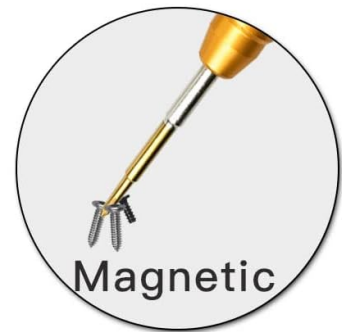


Original Joy-Con shell Screw is Y1.5 size!

1.5Y



1.5+



1.5+ Screwdriver is used to remove the internal fixing screws!



A small number of Joycon use Y2.0 screws, if yours is, contact us to get a free Y2.0 screwdriver : Email (On the red user card!)

Figure 2: The kit includes specific Y1.5 and +1.5 screwdrivers designed for Nintendo Switch screws, along with backup screws. Note that some Joy-Cons may use Y2.0 screws; contact support if your screws are larger than Y1.5.

TOP QUALITY SCREWDRIVER

Customized for Nintendo Switch



Figure 3: High-quality screwdrivers with S2 tool steel tips, non-slip grips, and rotatable caps for precise and comfortable use during the repair process.

OPERATING INSTRUCTIONS: JOYCON JOYSTICK REPLACEMENT

Follow these steps carefully to replace the drifting joystick in your Nintendo Switch Joy-Con controller. The process involves opening the controller, removing the old joystick, and installing the new one.

Step 1: Prepare the Joy-Con

1. Ensure your Nintendo Switch console is powered off.
2. Carefully detach the Joy-Con controller you wish to repair from the console.
3. Using the Y1.5 Tri-wing screwdriver, remove the four screws located on the back of the Joy-Con controller. Keep these screws in a safe place, such as the provided kit box, to avoid losing them.

Step 2: Open the Joy-Con Casing

4. Gently pry open the Joy-Con casing. Be extremely careful not to pull the two halves apart forcefully, as they are connected by delicate ribbon cables.
5. Once opened, you will see the internal components, including the battery and circuit board.

Your browser does not support the video tag.

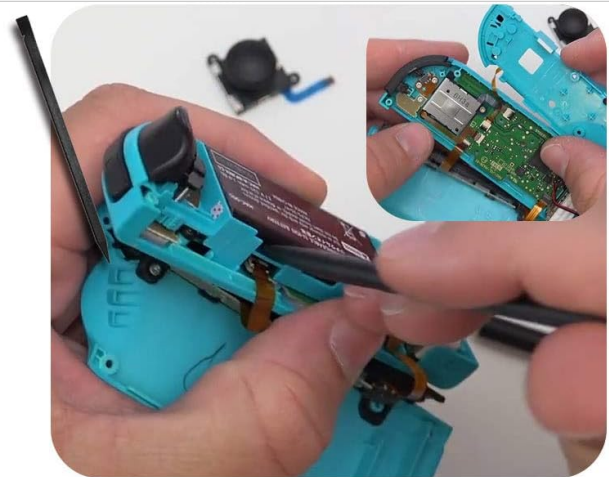
Video 1: A comprehensive video guide demonstrating the full Joy-Con repair process, including opening the casing, replacing components, and reassembly. This video is provided by the seller to assist with the repair.

Step 3: Remove Battery and Internal Components

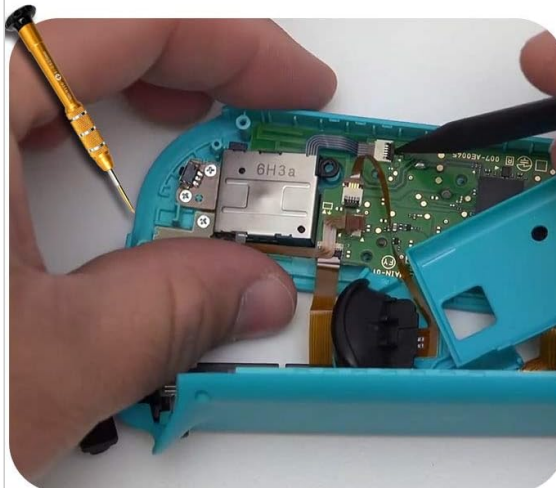
6. Carefully lift the battery. It may be lightly adhered; gently peel it away. Do not disconnect the battery cable unless necessary. Slide the battery to the side, ensuring the cable is not strained.
7. Locate the plastic separator plate covering the circuit board. Remove the screws holding this plate in place using the +1.5 Cross Screwdriver. Gently lift and remove the plastic plate.
8. Identify the ribbon cables connecting the joystick to the main circuit board. Carefully unlatch the small plastic clips holding the ribbon cables in place and gently pull the cables out. Use tweezers if needed.



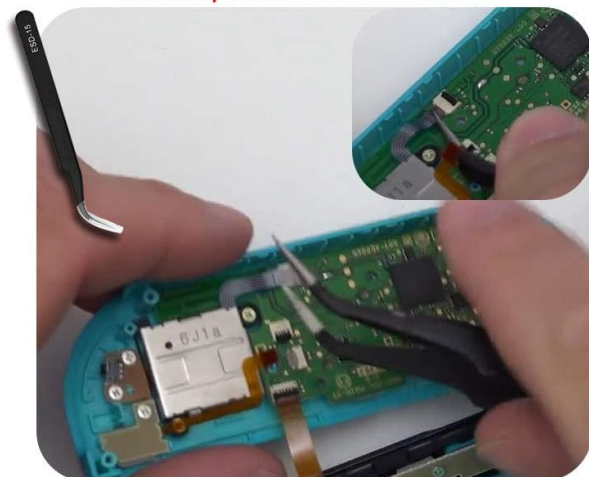
Step 1 open the Joy-Con



Step 2 Remove the battery and separator
Gently! Mind the cable



Step 3 Remove the broken joystick



Step 4 Install the replacement joystick and align it in settings

Make sure all connection is tightly connected!

Figure 4: Visual representation of the key steps: 1. Open the Joy-Con. 2. Remove the battery and separator (mind the cable). 3. Remove the broken joystick. 4. Install the replacement joystick and align connections tightly.

Step 4: Replace the Joystick

9. Once the ribbon cables are disconnected and any retaining screws are removed, carefully lift out the old, faulty joystick.
10. Take a new replacement joystick from your kit. Align its ribbon cables with the connectors on the circuit board and gently push them into place. Secure the plastic clips to lock the cables.

11. Position the new joystick correctly within the Joy-Con casing.



Figure 5: The new joystick is designed to fit precisely into the Joy-Con controller, ensuring proper function after installation.

Step 5: Replace Plastic Slider Locks with Metal Locks (Optional but Recommended)

If your Joy-Con slides out easily due to worn plastic locks, replace them with the included alloy metal slider locks for enhanced durability and a secure fit.

12. Locate the plastic slider locks on the side of the Joy-Con. Carefully remove them.

13. Install the new metal slider locks in their place. Ensure they are correctly oriented and seated.

1Right + 1left lock for permanent use



Alloy slide lock

- ✓ Will not be worn
- ✓ Tightly locked
- ✓ Lifetime use



- ✗ Easy to be weared
- ✗ Cannot be locked after wear



Original plastic slide lock

Figure 6: The alloy slide locks are designed for permanent use, offering a tighter and more durable connection compared to the original plastic locks which can wear out over time.



ONE PAIR REPLACEMENT KITS

Figure 7: A pair of Joy-Cons equipped with the new metal replacement slider locks, ensuring a secure attachment to the Nintendo Switch console.

Step 6: Reassemble the Joy-Con

14. Carefully re-position the plastic separator plate and secure it with its screws.
15. Place the battery back into its original position.
16. Gently close the Joy-Con casing, ensuring no cables are pinched.
17. Re-insert the four Y1.5 Tri-wing screws into the back of the Joy-Con controller and tighten them securely.

CALIBRATION

After replacing the joystick, it is crucial to calibrate it to ensure accurate in-game control.

1. Attach the repaired Joy-Con to your Nintendo Switch console.
2. Turn on the Nintendo Switch console.

- 3. Navigate to System Settings > Controllers and Sensors > Calibrate Control Sticks.
- 4. Follow the on-screen instructions to calibrate the newly installed joystick.

TROUBLESHOOTING

Issue: Joystick Drift Continues After Replacement

- **Recalibrate:** Ensure you have performed the calibration steps outlined in the "Calibration" section. Sometimes, multiple calibration attempts may be necessary.
- **Check Connections:** Re-open the Joy-Con and carefully inspect all ribbon cable connections to ensure they are fully seated and the plastic clips are securely latched.
- **Inspect for Damage:** Check the new joystick and its ribbon cables for any visible damage or bends that might have occurred during installation.
- **Software Update:** Ensure your Nintendo Switch console and Joy-Con controllers have the latest system software updates.

Your browser does not support the video tag.

Video 2: A short preview video illustrating the common issue of Joy-Con joystick drift, where the character moves without user input. This helps in identifying the problem before attempting a repair.

Issue: Screws are Stripped or Difficult to Remove

- **Correct Screwdriver:** Ensure you are using the correct Y1.5 Tri-wing screwdriver for the external screws and the +1.5 Cross Screwdriver for internal screws.
- **Y2.0 Screws:** Some batches of Nintendo Joy-Cons use Y2.0 screws. If the Y1.5 screwdriver does not fit easily, contact IIWEY support for a Y2.0 screwdriver.

SPECIFICATIONS

Feature	Detail
Brand	IIWEY
Model	Joycon Joystick Replacement Kit
Compatible Devices	Nintendo Switch, Switch Lite Joy-Con Controllers
Material	Metal (for slider locks), S2 Tool Steel (for screwdrivers)
UPC	796826376879, 796826308481, 883521757574






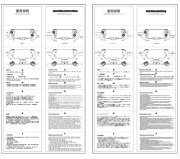
WARRANTY AND SUPPORT

For any missing parts, damaged components, or further assistance, please contact IIWEY customer support. Refer to the contact information provided with your product packaging or on the official IIWEY website for details regarding warranty coverage and support services.

CONTACT INFORMATION

Please refer to the contact card included in your product packaging for specific support details, including email and website information. You can also visit the official IIWEY store on Amazon for more product information and support resources.

Related Documents - Joycon Joystick Replacement Kit

	<p>IIWEY S2 Dash Cam User Manual</p> <p>Comprehensive user manual for the IIWEY S2 Dash Cam, covering installation, operation, features like GPS and WiFi, troubleshooting, and system updates.</p>
	<p>LOKPAD Joystick Cap Replacement Guide for Nintendo Switch</p> <p>Step-by-step instructions for replacing damaged joystick caps on Nintendo Switch, Switch OLED, and Switch Lite controllers using LOKPAD replacement caps.</p>
	<p>Nintendo Switch Right Joy-Con Joystick Replacement Guide</p> <p>A step-by-step guide to replacing the joystick on a Nintendo Switch Right Joy-Con, including necessary tools, parts, and detailed instructions for a successful repair.</p>
	<p>Nedis GNSWKIT110BK 13-in-1 Gaming Starter Kit for Nintendo Switch</p> <p>Comprehensive guide to the Nedis GNSWKIT110BK 13-in-1 Gaming Starter Kit, including Joy-Con grips, steering wheels, thumb grips, charging station, case, and screen protector for Nintendo Switch and Nintendo Switch (OLED model).</p>
	<p>Guía de Reemplazo del Joystick Izquierdo del Nintendo Switch</p> <p>Instrucciones paso a paso para reemplazar el joystick izquierdo de tu Nintendo Switch Joy-Con, incluyendo herramientas, partes y consejos de reparación.</p>
	<p>AyeBeau YS43/YS44/YS45 Joycon Operating Instructions - Game Controller Guide</p> <p>Comprehensive user manual for the AyeBeau YS43, YS44, and YS45 Joycon game controllers, covering connection, vibration, turbo, macro programming, and lighting controls for Nintendo Switch.</p>