

Elitech RC-4HC

Elitech RC-4HC USB Temperature and Humidity Data Logger Instruction Manual

Model: RC-4HC

1. PRODUCT OVERVIEW

The Elitech RC-4HC is a USB temperature and humidity data logger designed for monitoring and recording environmental conditions. It features an internal temperature and humidity sensor, with an option for an external temperature sensor. The device has a large storage capacity and allows for data export via USB.



Image 1: Elitech RC-4HC USB Temperature and Humidity Data Logger with its packaging, showing the device and the '50 PACK' label.

2. PACKAGE CONTENTS

Ensure all items are present in the package:

- 1 x RC-4HC Data Logger
- 1 x External Temperature Sensor
- 1 x USB Cable
- 1 x User Manual
- 1 x Validation Certificate
- 1 x Lithium Metal Battery

Package includes: 1*RC-4HC Data Logger, 1*External Temperature Sensor, 1*USB Cable, 1*User Manual, 1*Validation Certificate, 1*Battery



Image 2: Contents of the Elitech RC-4HC package, including the data logger, external sensor, USB cable, user manual, certificate, and battery.

3. SETUP AND INSTALLATION

3.1 Battery Installation

Before initial use, install the included Lithium Metal battery.

1. Locate the battery compartment on the back of the data logger.
2. Use a coin or similar tool to twist the battery cover counter-clockwise to open.
3. Place the battery under the small metal clip with the positive pole (+) facing you.
4. Replace the battery cover and twist clockwise to secure it.

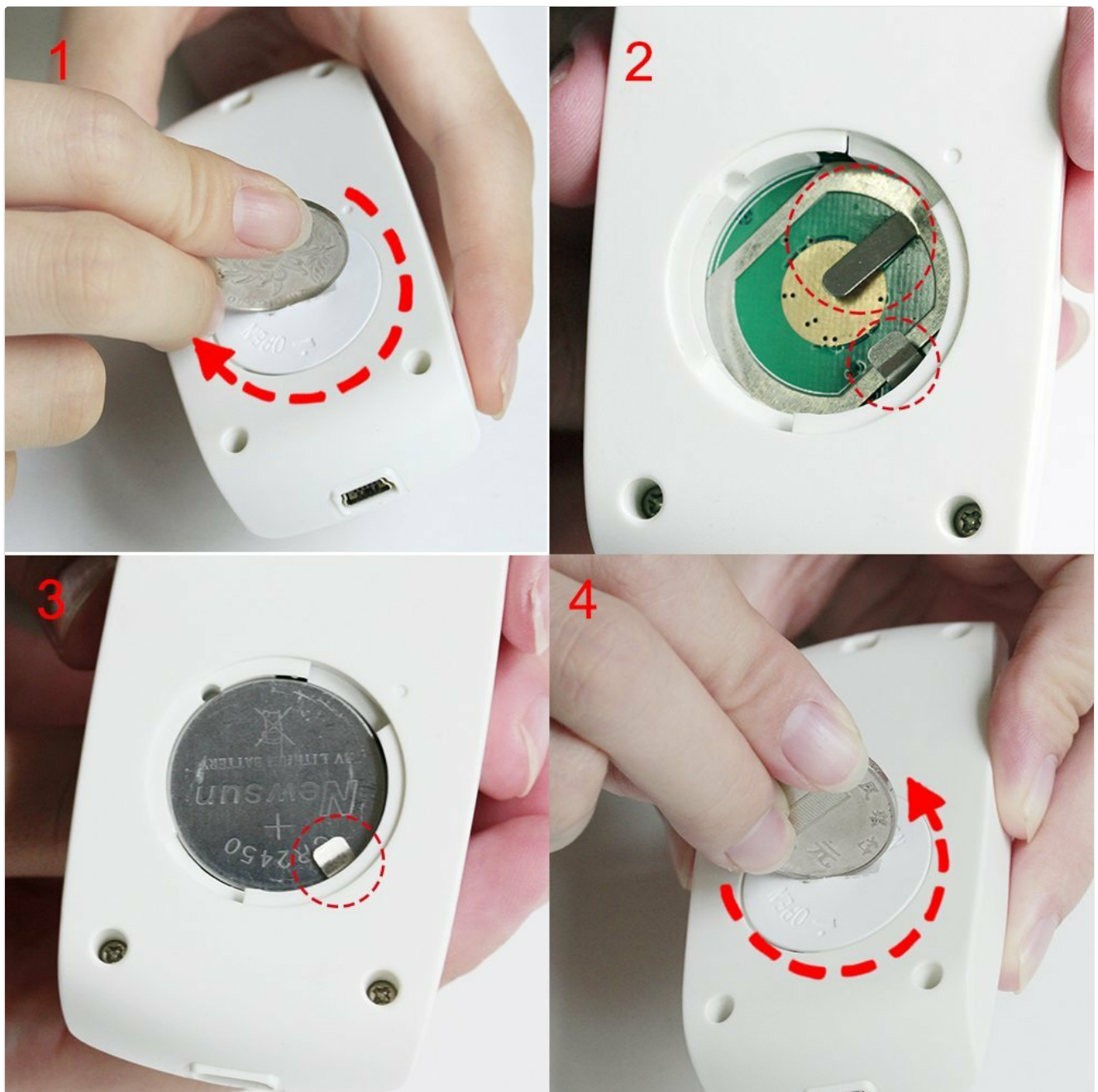


Image 3: A four-step visual guide demonstrating how to correctly install the battery into the Elitech RC-4HC data logger, showing the positive terminal placement.

3.2 External Sensor Connection (Optional)

If external temperature monitoring is required, connect the external temperature sensor to the designated port on the data logger.



Image 4: The Elitech RC-4HC data logger connected to a computer via USB and also showing the external temperature sensor connected.

3.3 Software Installation and Initial Parameter Setup

To configure the data logger and retrieve data, install the ElitechLog software on your computer (compatible with MAC/WIN). The software allows you to set logging parameters such as interval (e.g., 10 seconds), alarm limits, and temperature units (e.g., °C or °F).

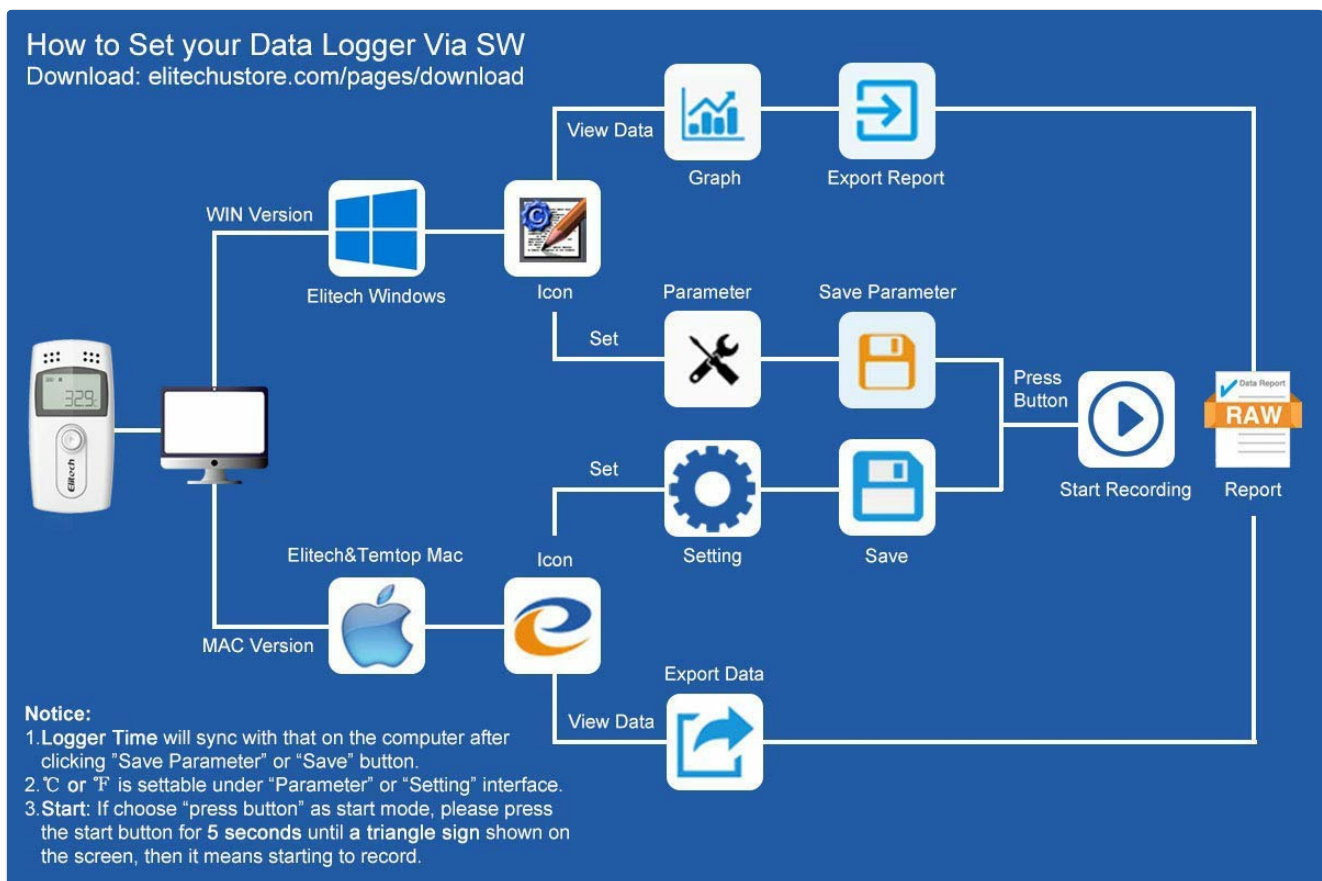


Image 5: A flowchart illustrating the workflow for setting up the data logger using ElitechLog software on both Windows and Mac operating systems, from connecting the device to saving parameters and starting recording.

Video: Elitech RC-4HC USB Temperature and Humidity Data Logger How to Use

Your browser does not support the video tag. This video demonstrates the battery installation, external sensor connection, connecting the logger to a computer, and setting parameters using the ElitechLog software.

4. OPERATING INSTRUCTIONS

4.1 Starting Data Logging

After setting parameters via the software, disconnect the logger from the computer. To start logging, press and hold the button on the logger for more than 4 seconds. A triangle sign firmly lit up on the screen indicates that logging has started.

4.2 Viewing Current Data

Press the button once to light up the screen and view the current temperature. Press again to cycle through humidity, total logged points, time, date, maximum temperature, minimum temperature, and upper/lower temperature limits.

4.3 Data Retrieval and Export

Connect the data logger to your computer using the USB cable. Open the ElitechLog software. The software will automatically read the recorded data. You can then view the data in graph or list format and export it to PDF or Excel files. The software also supports managing and comparing multiple historical data sets.

Export Data via Elitech Software



Image 6: An illustration showing the Elitech RC-4HC data logger connected to a computer, with data being exported to various formats like PDF, Word, Excel, and TXT via ElitechLog software.

5. FEATURES AND SPECIFICATIONS

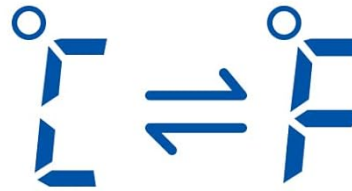
- **Sensors:** Internal 1 temperature sensor and 1 humidity sensor, 1 optional external temperature sensor.
- **Temperature Range:** -40°C to +85°C (-22°F to 185°F).
- **Humidity Range:** 10% to 99% RH.
- **Temperature Accuracy:** $\pm 0.5^{\circ}\text{C}/\pm 0.9^{\circ}\text{F}$ (-20°C to +40°C); $\pm 1^{\circ}\text{C}/\pm 1.8^{\circ}\text{F}$ (others).
- **Resolution:** 0.1°C/°F.
- **Data Points:** 16,000.
- **Log Interval:** Adjustable from 10 seconds to 24 hours.
- **Temperature Unit:** Selectable between °F and °C.
- **Alarm:** LCD alarm indication, buzzer alarm.
- **Connectivity:** USB for PC connection.
- **Data Export:** PDF/EXCEL via data management software.

- **Battery:** 1 Lithium Metal battery (included).
- **Dimensions:** Width: 44mm, Height: 84mm, Thickness: 20mm.

Elitech

Innovation Preceding All

Specification



Temperature

Measurement Range

-40°C~+85°C(-22°F~185°F)

Temperature Accuracy

±0.5°C/±0.9°F(-20°C~+40°C);
±1°C/±1.8°F(others)

Resolution

0.1°C/°F

Amount of Data

16000 points Max

Humidity Range

10~99%RH

Image 7: A visual representation of the Elitech RC-4HC data logger's key specifications, including temperature and humidity measurement ranges, accuracy, resolution, and data capacity.

Buzzer Alarm

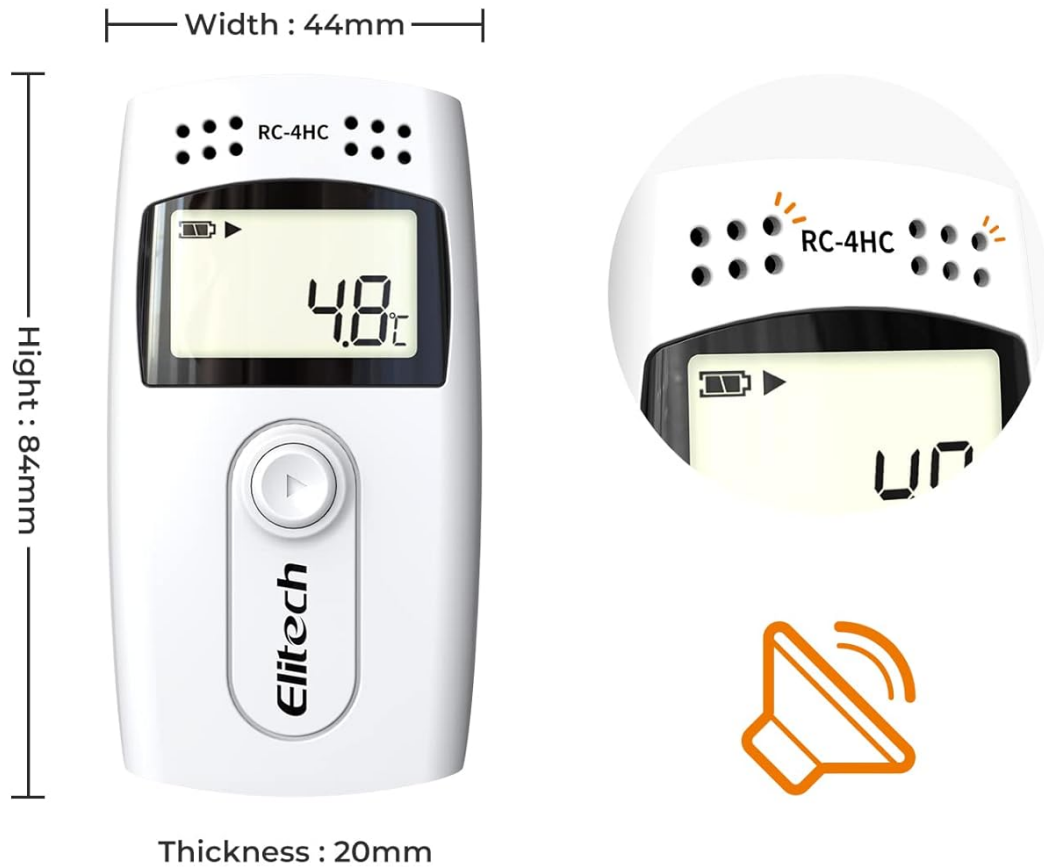


Image 8: The Elitech RC-4HC data logger showing its dimensions (width 44mm, height 84mm, thickness 20mm) and highlighting the buzzer alarm feature.

6. MAINTENANCE

To ensure optimal performance and longevity of your Elitech RC-4HC data logger:

- **Cleaning:** Wipe the device clean with a soft, dry cloth. Avoid using abrasive cleaners or solvents.
- **Battery Replacement:** Replace the Lithium Metal battery when the low battery indicator appears on the display.
- **Storage:** Store the device in a cool, dry place away from direct sunlight and extreme temperatures when not in use for extended periods.

7. TROUBLESHOOTING

If you encounter issues with your Elitech RC-4HC data logger, consider the following:

- **Device Not Starting:** Ensure the battery is correctly installed with the positive pole facing up and is not

depleted.

- **No Data on Software:** Verify the USB connection to the computer. Ensure the ElitechLog software is running and the device is recognized.
- **Incorrect Readings:** Check if the external sensor is properly connected (if used). Ensure the device is placed in an environment suitable for its operating range.
- **Software Issues:** Ensure you have the latest version of ElitechLog software installed. Refer to the software's help documentation for specific error messages.

8. WARRANTY AND SUPPORT

For warranty information, technical support, or service inquiries, please contact Elitech Technology Inc. using the details below:



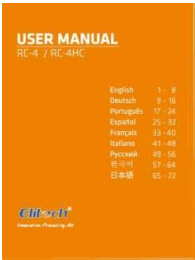


Tel: (+1)408-844-4070

Email: support@elitechus.com

Website: www.elitechstore.com

© 2023 Elitech Technology Inc. All rights reserved.

Related Documents - RC-4HC

	<p>Elitech RC-4/RC-4HA/RC-4HC Data Logger Quick Start Guide Installation & Configuration</p> <p>Quick Start Guide for Elitech RC-4, RC-4HA, and RC-4HC data loggers. Learn how to install batteries, set up software, configure settings, start/stop logging, and troubleshoot common issues. Includes detailed technical specifications for temperature and humidity monitoring.</p>
	<p>Elitech RC-4/RC-4HA/RC-4HC Data Logger Quick Start Guide</p> <p>A concise quick start guide for Elitech RC-4, RC-4HA, and RC-4HC data loggers, providing essential instructions on battery installation, software setup, logger operation, configuration, and troubleshooting.</p>
	<p>Elitech RC-4 / RC-4HC User Manual</p> <p>User manual for the Elitech RC-4 and RC-4HC temperature and humidity data loggers. Includes specifications, operation, status indication, and battery replacement.</p>
	<p>Elitech RC-4 Series Temperature and Humidity Data Logger - User Manual & Specifications</p> <p>Comprehensive user manual and technical specifications for the Elitech RC-4 and RC-4HC series temperature and humidity data loggers. Learn about operation, setup, data logging, and features for cold chain management.</p>
	<p>Elitech RC-4 Series Temperature and Humidity Data Loggers - User Manual</p> <p>Comprehensive user manual for Elitech RC-4 and RC-4HC series temperature and humidity data loggers. Covers specifications, operation, setup, and troubleshooting for cold chain monitoring.</p>



[Elitech RC-4/RC-4HC Temperature and Humidity Data Logger User Manual](#)

This user manual provides comprehensive instructions for operating and maintaining the Elitech RC-4 and RC-4HC temperature and humidity data loggers. It covers product features, operation, parameter configuration, data viewing and export, battery replacement, specifications, precautions, and warranty information.