

[manuals.plus](#) /

› [Inalsa](#) /

› [Inalsa Magic Pro 800W Food Processor User Manual](#)

## Inalsa Magic Pro

# Inalsa Magic Pro 800W Food Processor User Manual

Model: Magic Pro

## INTRODUCTION

---

Thank you for purchasing the Inalsa Magic Pro 800W Food Processor. This manual provides important information for the safe and efficient operation of your appliance. Please read it thoroughly before first use and keep it for future reference.

Trouble Shooting/ समस्या एवं समाधान		
Problem/समस्या	Cause/कारण	Corrective Action/सुधारात्मक क्रिया
The processor does not start. प्रोसेसर चालू नहीं होता	No power supply बिजली की सप्लाई नहीं है।	Ensure power supply. बिजली की सप्लाई सुनिश्चित करें।
	Tripped due to over load ओवरलोड के कारण बिजली का उतार-चढ़ाव	Switch off supply. (reference to TOP function) (Page 22) बिजली की सप्लाई बंद करें। (TOP फंक्शन का उदाहरण देखें) (पेज संख्या 22 पर)
		If it still does not operate, contact the nearest INALSA authorized service center. अगर यह अभी भी काम नहीं करता तो नजदीकी इनाल्सा अधिकृत सर्विस सेंटर से सम्पर्क करें।
	Processor bowl lid cover / Citrus press bowl not fitted properly in its place. प्रोसेसर बाउल कवर / सिट्रस प्रेस बाउल अपनी जगह में ठीक से फिट नहीं हुआ है।	Fit the processor bowl lid cover / citrus press bowl not fitted properly in its place. प्रोसेसर बाउल कवर / सिट्रस प्रेस बाउल को अपनी जगह में ठीक से फिट करें।
The performance is not satisfactory ठीक से काम नहीं कर रहा है।	Overloading ओवर लोडिंग	Fill the processor bowl or jars with the quantities as recommended. प्रोसेसर बाउल या जारों में सुझायी गई मात्राओं के अनुसार ही सामग्री भरें।
	Size of ingredients to be processed is not proper. प्रोसेस की जानेवाली सामग्रियों का आकार ठीक नहीं है।	Cut/break the ingredients to be ground into appropriate size. पिसाई की जाने वाली सामग्रियों को उपयुक्त आकार में काटें/तोड़ें।
Processor generates abnormal noise प्रोसेसर असामान्य आवाज कर रहा है।	Wrong jar / blade used. गलत जार / ब्लेड का इस्तेमाल किया गया है।	Ensure that the jar / blade used is as specified in the processing table. सुनिश्चित करें कि प्रोसेसिंग तालिका में निर्धारित किए गये अनुसार जारी ब्लेड का इस्तेमाल किया जा रहा है।

Image: Inalsa Magic Pro 800W Food Processor with its various attachments.

## IMPORTANT SAFETY INSTRUCTIONS

To ensure safe operation and prevent damage, please adhere to the following instructions:

### Do's

## Important Instructions / महत्वपूर्ण निर्देश

### Do's / करना है :

1. Before connecting the appliance check the mains voltage comply with the voltage specified, which should be 240V, AC.  
उपकरण को चलाने से पहले जांच कर ले कि आपके घर की बिजली 240वोल्ट, ए.सी. (अल्टरनेटिंग करंट) है।
2. Place your food processor at a convenient height so that you can operate it easily. You should be able to look down into the attachments to check the circulation of the ingredients.  
अपना फूड प्रोसेसर एक सुविधाजनक ऊंचाई पर रखें ताकि आप इसे आसानी से इस्तेमाल कर सकें। आप सामग्री के संचालन की जाँच करने के लिए एटेचमेंट्स में नीचे देखने के सक्षम होने चाहिए।
3. Clear out some space around the machine and keep food processor away from direct heat and sun.  
मशीन के आसपास कुछ जगह खाली रखें और गर्मी तथा धूप से फूड प्रोसेसर का बचाव करें।
4. Take care as the cutting edges of the blade cutters are very sharp.  
ब्लेड कटर के किनारे बहुत तेज हैं इसलिए ध्यानपूर्वक इस्तेमाल करें।
5. Ensure that the bowl assembly is perfectly locked with the basic unit.  
यह सुनिश्चित करें कि बाउल असेंबली पूरी तरह से मोटर बॉडी के साथ लॉक कर दिया गया है।
6. Always use a spatula during processing of the food.  
प्रोसेसिंग के दौरान खाद्य पदार्थ चलाने के लिए हमेशा स्पैच्यूला का उपयोग करें।
7. Keep the food processor away from the reach of the children.  
फूड प्रोसेसर को बच्चों की पहुंच से दूर रखें।

*Image: A list of important 'Do's' for safe operation.*

1. Before connecting the appliance, check that the mains voltage complies with the voltage specified (240V, AC).
2. Place your food processor at a convenient height for easy operation and to observe attachments.
3. Clear space around the machine and keep it away from direct heat and sunlight.
4. Exercise caution with cutting edges of blade cutters as they are very sharp.
5. Ensure the bowl assembly is perfectly locked with the basic unit.
6. Always use a spatula during food processing.
7. Keep the food processor away from children.

### Don'ts

### **Don'ts/ नही करना है :**

1. Do not leave the food processor in running condition unattended.  
चल रहे फूड प्रोसेसर को अनुपस्थित हालत में न छोड़ें।
2. Do not touch the moving parts during operation as they revolve at extremely high speeds and may cause injury.  
इस्तेमाल के दौरान चलते हुए भागों को हाथ नहीं लगाये क्योंकि ये अत्यंत तीव्र गति से घूमते हैं और नुकसान पहुंचा सकते हैं।
3. Never allow the shredded, sliced or chipped food to touch the discs during operation. It could force the disc upwards and cause damage. If bowl begins to fill, empty it out in between.  
श्रेडिंग, कटा हुआ या चिप्पड खाद्य को संचालन के दौरान डिस्क से न छुने दें। यह डिस्क को ऊपर की ओर धकेल सकता है और नुकसान का कारण बन सकता है। यदि बाउल भरने लगे तो उसे बीच में खाली कर दें।
4. Do not feed larger sized fruits into the feeder tube by force. This can overload the motor and juicer filter may get unbalanced.  
फीडर ट्यूब में बड़े आकार के फल को बल से न डालें, यह मोटर को ओवर लोड कर सकता है और जूसर फिल्टर असंतुलित हो सकता है।
5. Never lay a thin plastic sheet or cloth under the basic unit. It may get sucked up and block the ventilation holes in the base.  
पतली प्लास्टिक शीट या कपड़ा मशीन के नीचे कभी न रखें। यह शोषित हो सकता है और बेस में दिये वेंटिलेशन छेद बंद कर सकता है।
6. For citrus juicing do not allow the cord to hang over the edges of the table, or touch hot surface.  
साइट्रस जुसिंग के लिए कॉर्ड को मेज के किनारों पर लटकने या गर्म सतह को छूने न दें।
7. Do not push food into the feeder tube by fingers while it is in operation. If fruit become clogged in the feeder tube, use pusher to push it down. If it doesn't work, turn off the motor, unplug the unit, then disassemble the food processor to remove remaining food.  
संचालन के समय फीडर ट्यूब में खाद्य सामग्री को उंगलियों से धक्का न दें। यदि फल फीडर ट्यूब में फंस गया है, तो फूड पुशर का उपयोग कर नीचे करें। यदि फिर भी वह नीचे नहीं होता है, तो मोटर को ऑफ कर यूनिट को अनप्लग करें और फसी हुई खाद्य सामग्री को निकालने के लिए फूड प्रोसेसर को अलग करें।
8. Do not immerse the appliance in water.  
उपकरण को पानी में न डुबाएं।

*Image: A list of important 'Don'ts' for safe operation.*

- Do not leave the food processor running unattended.
- Do not touch moving parts during operation as they revolve at extremely high speeds and can cause injury.
- Never allow shredded, sliced, or chipped food to touch the discs during operation. This can force the disc upwards and cause damage. Empty the bowl frequently.
- Do not feed oversized fruits into the feeder tube by force. This can overload the motor and unbalance the juicer filter.
- Never lay a thin plastic sheet or cloth under the basic unit. It may get sucked up and block the ventilation holes.
- For citrus juicing, do not allow the cord to hang over the table edge or touch hot surfaces.
- Do not push food into the feeder tube with fingers while it is in operation. If food becomes clogged, use the food pusher. If it doesn't work, turn off the unit, unplug it, then disassemble to remove food.
- Do not immerse the appliance in water.

## **PRODUCT OVERVIEW AND COMPONENTS**

The Inalsa Magic Pro Food Processor is designed for versatile kitchen tasks. It features an 800-Watt motor and comes with multiple attachments for various functions.

## Key Features

- **Powerful 800-Watt Motor:** Ensures efficient and fast processing.
- **2 Speed Settings with Pulse Function:** Provides control for different processing needs.
- **Anti-Skid Feet:** For superior stability during operation.
- **Family Size Capacity:** 1.4 L processing bowl ideal for large meals.
- **High-Quality Jars and Stainless Steel Blades:** Durable and efficient for various tasks.



Image: Visual representation of key features: 800 Watts, 2 Jars, Chopper, Atta Kneader, Egg Whisker, Citrus Juicer, Stainless Steel Grinding Jar, Anti-Skid Feet.

# Anti-Skid

Ensure Superior Stability



*Image: The food processor highlighting its anti-skid base and control dial.*

## Included Components

- Main Unit (Motor Base)
- 1.4 L Processing Bowl with Easy Grip
- Bowl Cover
- Food Pusher
- 1.8 L Transparent Blender Jar
- 400 ml Stainless Steel Multipurpose Jar
- Chopping Blade
- Kneader Blade
- Egg Whisker
- Citrus Juicer
- Coarse Shredder Cutter

- Fine Slicer
- French Fry Cutter
- Processor Spindle
- Blade and Cutter Holder
- Spatula

## Elegant & Compact Design



*Image: All components and accessories of the Inalsa Magic Pro Food Processor.*

## 2 Jars

- 1.8L Transparent Blender Jar
- 400ml SS 304 Multipurpose Jar

**1.8 L**



**400 ML**



*Image: The 1.8 L transparent blender jar and the 400 ml stainless steel multipurpose jar.*

# **Processing Bowl with Easy Grip**

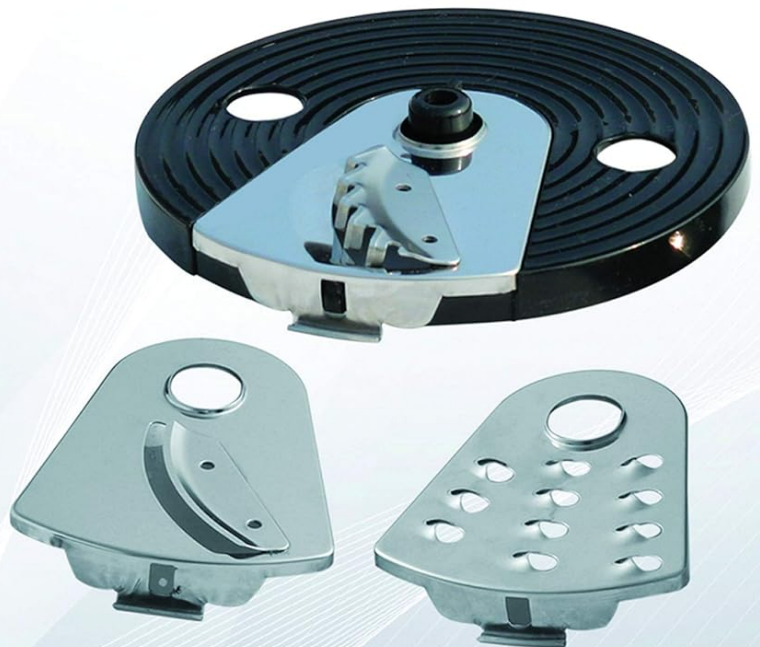
1.4 L Processing Bowl for Multi use



*Image: The 1.4 L processing bowl with an easy-grip handle.*

## 3 SS Segmented Cutters

- French Fries
- Slicing
- Shredding



*Image: Three stainless steel segmented cutters for French fries, slicing, and shredding.*

### SETUP AND ASSEMBLY

---

Before first use, ensure all packaging materials are removed and components are clean. Assemble the food processor according to the task you wish to perform.

1. **Motor Base Placement:** Place the motor base on a stable, flat, and dry surface. Ensure there is enough space around the unit for ventilation.
2. **Attaching the Processing Bowl:**
  - Place the processing bowl onto the motor base, aligning the bowl's handle with the safety lock mechanism on the base.
  - Rotate the bowl clockwise until it locks securely into place. You should hear a click.
  - Insert the desired blade (chopping, kneading) or spindle for cutters into the center shaft of the bowl.
  - Place the bowl cover onto the processing bowl, aligning the feed chute with the handle. Rotate the cover clockwise

until it locks.

- Insert the food pusher into the feed chute.

### 3. Attaching Jars (Blender/Multipurpose):

- For the blender jar or multipurpose jar, ensure the blade assembly is securely fitted at the bottom of the jar.
- Place the jar onto the motor base, aligning the tabs on the jar with the slots on the base.
- Rotate the jar clockwise until it locks securely.
- Place the lid onto the jar and ensure it is properly sealed.

### 4. Power Connection: Plug the power cord into a 240V AC power outlet.

## OPERATION

---

The Inalsa Magic Pro offers two speed settings and a pulse function for precise control over your food preparation.

### Using the Control Dial

- **"0" (Off):** The appliance is off. Always ensure the dial is in this position before plugging in or unplugging the unit, or assembling/disassembling parts.
- **"1" (Low Speed):** Suitable for lighter tasks such as mixing, blending soft ingredients, or light chopping.
- **"2" (High Speed):** Ideal for heavier tasks like grinding, pureeing, or kneading dough.
- **"P" (Pulse):** Provides short bursts of maximum power. Hold the dial in the "P" position for intermittent operation. Release to stop. This is useful for coarse chopping, controlling texture, or dislodging food.

### General Operating Guidelines

1. Ensure the appliance is correctly assembled and locked before operation.
2. Add ingredients to the processing bowl or jar. Do not overfill beyond the maximum fill line indicated.
3. Select the desired speed setting (1 or 2) or use the pulse function (P).
4. For continuous operation, turn the dial to '1' or '2'. For intermittent processing, use 'P'.
5. Always use the food pusher to guide ingredients through the feed chute; never use your fingers.
6. After use, turn the dial to '0' and unplug the appliance from the power outlet.
7. Wait for all moving parts to stop completely before disassembling.

### Specific Functions

- **Chopping:** Use the chopping blade in the processing bowl. For best results, process ingredients in small batches. Use the pulse function for coarse chopping.
- **Kneading Dough:** Attach the kneading blade to the processing bowl. Add flour and water according to your recipe. Use speed '2' or the pulse function until dough forms.
- **Slicing/Shredding/French Fries:** Insert the appropriate cutter disc onto the spindle in the processing bowl. Place the bowl cover and use the food pusher to feed ingredients through the chute.
- **Blending:** Use the 1.8 L blender jar for liquids, smoothies, and purees. Ensure the lid is secure.
- **Grinding:** Use the 400 ml stainless steel multipurpose jar for dry grinding spices or wet grinding pastes.
- **Citrus Juicing:** Attach the citrus juicer component to the processing bowl. Press halved citrus fruits onto the reamer while the motor is running.
- **Egg Whisker:** Use the egg whisker attachment in the processing bowl for whipping eggs or cream.

## CARE AND MAINTENANCE

---

Proper cleaning and maintenance will extend the life of your Inalsa Magic Pro Food Processor.

- 1. **Before Cleaning:** Always switch off the appliance, unplug it from the power outlet, and wait for all moving parts to stop.
- 2. **Motor Base:** Wipe the motor base with a damp cloth. Never immerse the motor base in water or any other liquid.
- 3. **Jars, Bowls, and Lids:** Wash all removable parts (jars, bowls, lids, food pusher) in warm, soapy water. Rinse thoroughly and dry immediately.
- 4. **Blades and Cutters:** Handle blades and cutter discs with extreme care as they are very sharp. Clean them using a brush if necessary, and dry thoroughly.
- 5. **Dishwasher Safety:** The appliance is **NOT** dishwasher safe. Hand wash all components.
- 6. **Storage:** Store the assembled unit and all accessories in a clean, dry place, out of reach of children.

## TROUBLESHOOTING

Refer to the table below for common issues and their solutions. If the problem persists, contact customer service.

### Troubleshooting Guide

Problem	Cause	Corrective Action
The processor does not start.	No power supply.	Ensure power supply.
	Tripped due to overload.	Switch off the appliance. Refer to the TOP function (Page 22). If it still does not operate, contact the nearest INALSA authorized service center.
	Processor bowl lid cover / Citrus press bowl not fitted properly in its place.	Fit the processor bowl lid cover / citrus press bowl properly in its place.
The performance is not satisfactory.	Overloading.	Fill the processor bowl or jars with the quantities as recommended.
	Size of ingredients to be processed is not proper.	Cut/break the ingredients to be ground into appropriate size.
Processor generates abnormal noise.	Wrong jar / blade used.	Ensure that the jar / blade used is as specified in the processing table.

## SPECIFICATIONS

Feature	Detail
Brand	Inalsa
Model Name	Magic Pro
Power	800 Watts
Voltage	240V AC

Feature	Detail
Number of Speeds	2 + Pulse Function
Processing Bowl Capacity	1.4 Liters
Blender Jar Capacity	1.8 Liters
Multipurpose Jar Capacity	400 ml (Stainless Steel)
Blade Material	Stainless Steel
Color	Black & Silver
Item Dimensions (LxWxH)	26 x 22.6 x 39.5 Centimeters
Item Weight	4 kg 300 g
Special Features	Built-in Grinder, Anti-Skid Feet
Recommended Uses	Chop, Grind, Knead, Shredder, Slice, Juice, Whisk

## WARRANTY AND CUSTOMER SUPPORT

Your Inalsa Magic Pro Food Processor comes with a**2-year hassle-free warranty** from the date of purchase. For any service, support, or warranty claims, please contact Inalsa customer service:

- **Contact Numbers:** 9773982065, 9773982066, 9773982067, 9773982068, 9773982069

Please have your purchase details and model number ready when contacting support.

