

Manuals+

[Q & A](#) | [Deep Search](#) | [Upload](#)

manuals.plus /

> [OROPY](#) /

> [OROPY Industrial Pipe Clothing Rack \(Model: B07R3ZLMJS\) User Manual](#)

OROPY B07R3ZLMJS

OROPY Industrial Pipe Clothing Rack User Manual

Model: B07R3ZLMJS

1. INTRODUCTION

Thank you for choosing the OROPY Industrial Pipe Clothing Rack. This manual provides essential information for the safe and efficient assembly, operation, and maintenance of your new garment rack. Please read these instructions carefully before assembly and retain them for future reference.

2. SAFETY INFORMATION

- Ensure all parts are present and undamaged before assembly. Do not use if any parts are missing or broken.
- Assemble the rack on a soft, clean surface to prevent scratches.
- Tighten all connections securely, but do not overtighten to avoid stripping threads.
- Do not exceed the maximum load capacity of **250 pounds (113 kg)** to prevent collapse or damage.
- Keep children and pets away during assembly.
- Place the rack on a level and stable surface to prevent tipping.

3. PACKAGE CONTENTS

Verify that all components listed below are included in your package. If any parts are missing or damaged, please contact customer support.

DIMENSIONS & LOAD-BEARING

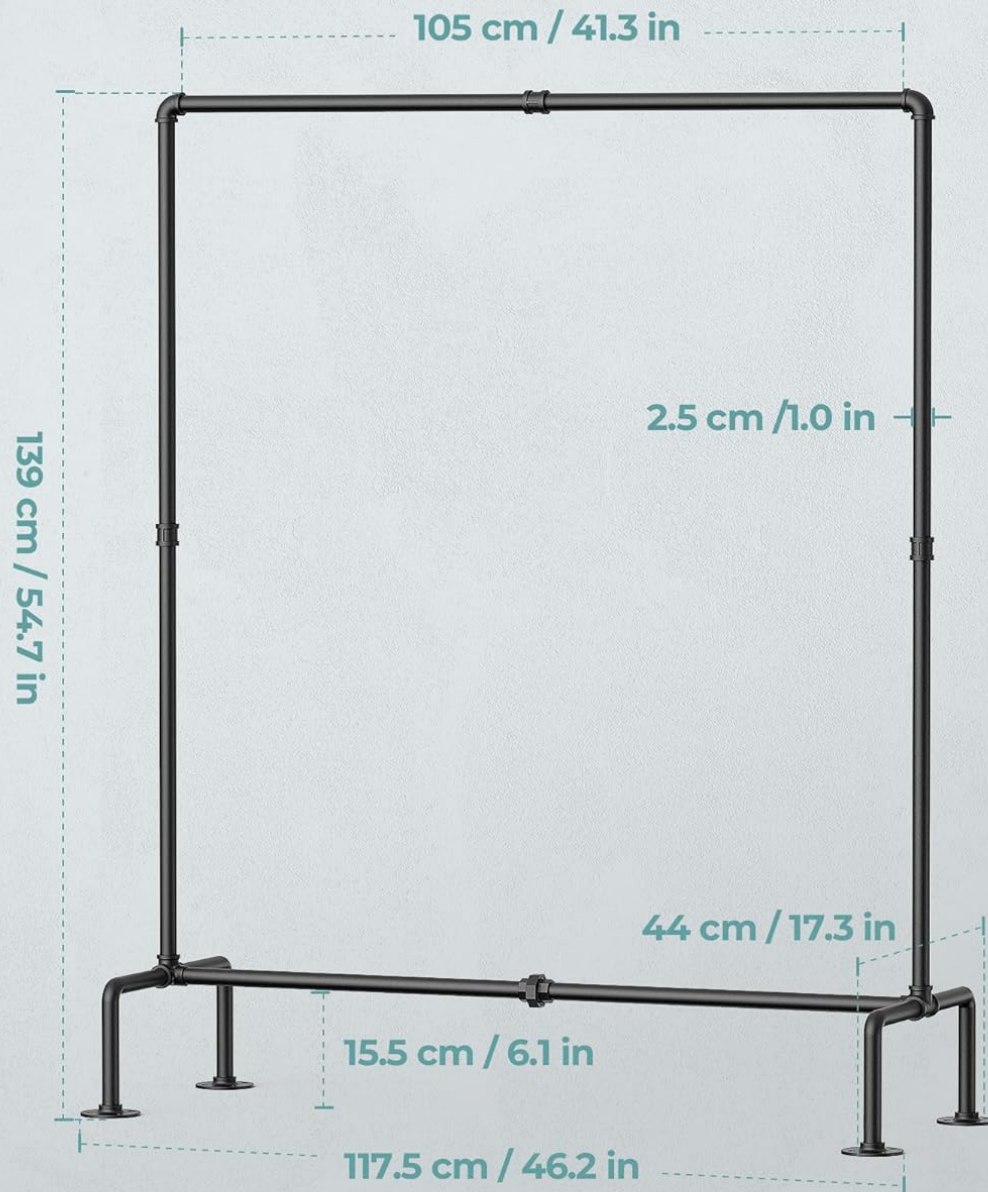


Image: All components of the OROPY Industrial Pipe Clothing Rack.

The package includes various pipe sections, connectors, and flanges necessary for assembly. Refer to the included diagram for specific part identification.

4. ASSEMBLY INSTRUCTIONS

Assembly is straightforward and requires no additional tools. Follow these steps carefully:

1. **Prepare the Base:** Begin by assembling the base sections. Connect the short pipe segments to the flanges to form the feet of the rack.
2. **Attach Vertical Pipes:** Screw the vertical pipe sections into the assembled base feet. Ensure they are securely tightened.

3. **Connect Horizontal Support:** Attach the lower horizontal support pipe between the two vertical base structures. This provides stability to the bottom of the rack.
4. **Install Top Rail:** Connect the top horizontal rail between the upper ends of the vertical pipes. This forms the main hanging bar.
5. **Final Tightening:** Once all parts are connected, gently tighten all joints to ensure the rack is stable and firm. Avoid overtightening.

Video: Step-by-step installation guide for the OROPY Industrial Pipe Clothing Rack.

Video: Visual instructions for assembling the industrial freestanding clothes rack.

5. USAGE

The OROPY Industrial Pipe Clothing Rack is designed for versatile garment storage and display. Its robust construction makes it suitable for various environments.

- **Garment Storage:** Hang clothes and coats to prevent wrinkles and keep them organized.
- **Versatile Placement:** Ideal for retail stores, boutiques, homes, workrooms, dance rooms, hallways, entryways, bedrooms, closets, laundry rooms, or balconies.
- **Heavy Duty:** Capable of holding a significant amount of clothing, up to 250 pounds.

LAUNDRY ROOM STORAGE

A perfect drying rack for laundry room

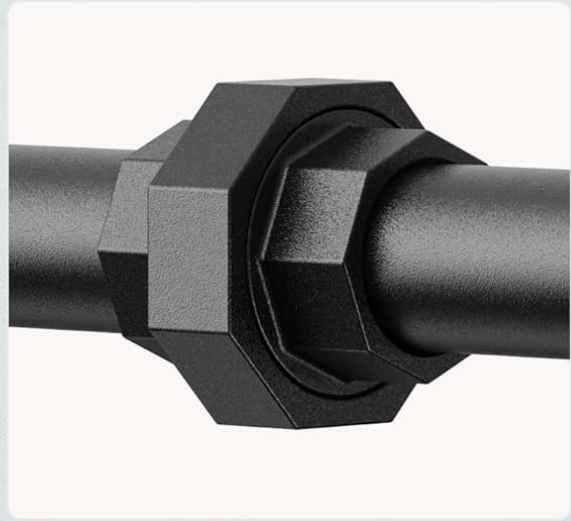


Image: Rack in a living room, keeping everyday wear accessible.

PRODUCT DETAILS



Matte Black Paint



Industrial Style Bolts



Precise Thread Cutting



Sturdy Flange Base

Image: Rack used for laundry room storage, ideal for drying clothes.

BEDROOM STORAGE

Keep Clothes Tidy and Organized



Image: Rack providing additional bedroom storage to keep clothes tidy.

6. MAINTENANCE

To ensure the longevity and appearance of your OROPY clothing rack, follow these simple maintenance guidelines:

- **Cleaning:** Wipe the rack regularly with a soft, damp cloth to remove dust and dirt. Avoid abrasive cleaners or harsh chemicals that could damage the matte black finish.
- **Inspection:** Periodically check all pipe connections and flanges to ensure they remain tight and secure. Retighten if necessary.
- **Weight Distribution:** Distribute clothing weight evenly across the rail to prevent stress on any single point and maintain stability.

7. TROUBLESHOOTING

If you encounter any issues with your clothing rack, refer to the following common problems and solutions:

- **Rack is Wobbly/Unstable:**
 - Ensure all pipe connections are fully tightened.
 - Verify the rack is placed on a flat, even surface. Adjust the position if necessary.
 - Check if any pipe segments are bent or damaged. Contact customer support if damage is found.
- **Parts Do Not Fit Together:**
 - Double-check the assembly steps to ensure the correct parts are being connected in the proper orientation. Some pipes may have specific threading directions.
 - Inspect pipe threads for any manufacturing defects or debris. Clean threads if necessary.
 - If parts still do not fit, contact customer support for assistance.
- **Rack Appears Bowed Under Load:**
 - Reduce the amount of clothing on the rack. Ensure the total weight does not exceed the **250-pound (113 kg)** capacity.
 - Distribute the weight more evenly across the entire length of the hanging rail.

8. SPECIFICATIONS

Brand	OROPY
Model Number	B07R3ZLMJS
Material	Iron
Color	Matt Black
Product Dimensions	17.52"D x 46.34"W x 54.53"H (44.5cm D x 117.7cm W x 138.5cm H)
Installation Type	Free Standing
Load Capacity	250 Pounds (113 kg)
Assembly Required	Yes



Image: Dimensions and Load-Bearing Capacity.



Image: Thickened Carbon Steel and Layers of the Clothes Rail Pipe.

9. WARRANTY AND SUPPORT

For warranty information, product support, or to report missing/damaged parts, please contact OROPY customer service through the retailer's platform or the official OROPY website. Please have your model number (B07R3ZLMJS) and purchase date available when contacting support.