

[manuals.plus](#) /

› [LoraTap](#) /

› [LoraTap Mini WiFi Switch Instruction Manual](#)

LoraTap RR400W

LoraTap Mini WiFi Switch Instruction Manual

Model: RR400W

1. PRODUCT OVERVIEW

The LoraTap Mini WiFi Switch is a compact smart relay module designed to integrate your traditional electrical appliances into a smart home system. It allows for remote control via the Smart Life app, voice control through Alexa and Google Assistant, and offers advanced scheduling and timing functions. This device is ideal for automating lights, fans, and other appliances up to 2500W/10A.



Image: Two LoraTap Mini WiFi Switch modules, showing their compact size and wiring terminals.

2. SAFETY INFORMATION

Important: Always turn off the power supply at the circuit breaker before performing any wiring. After wiring, gently pull the wires to ensure they are securely connected. Incorrect wiring can lead to electric shock or device damage. If you are unsure about electrical wiring, consult a qualified electrician.

3. WHAT'S IN THE BOX

- 2 x LoraTap Mini WiFi Modules
- Wiring Cables
- Screws
- Double-sided Adhesive Tapes
- User Guide

4. SETUP AND INSTALLATION

4.1 Wiring Diagram

The device requires a neutral wire for power. Ensure your installation location has one. Follow the diagram below for correct wiring:

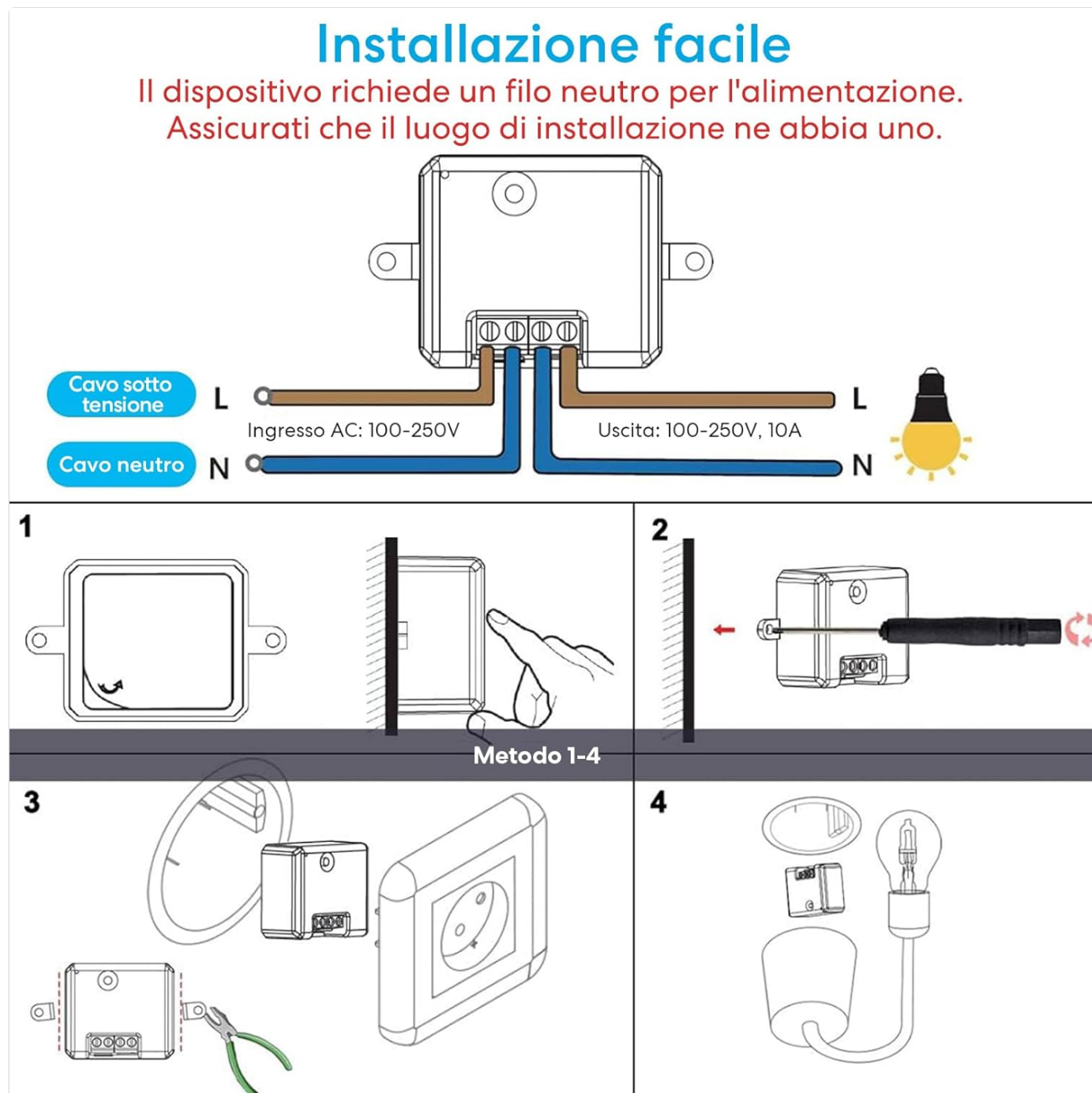


Image: Detailed wiring diagram showing Live (L) and Neutral (N) input and output connections for the LoraTap Mini WiFi Switch to a light fixture.

4.2 App Installation and Pairing

The LoraTap Mini WiFi Switch works with the Smart Life or Tuya app. Download the app from the iPhone App Store or Android App Store.

Associazione facile

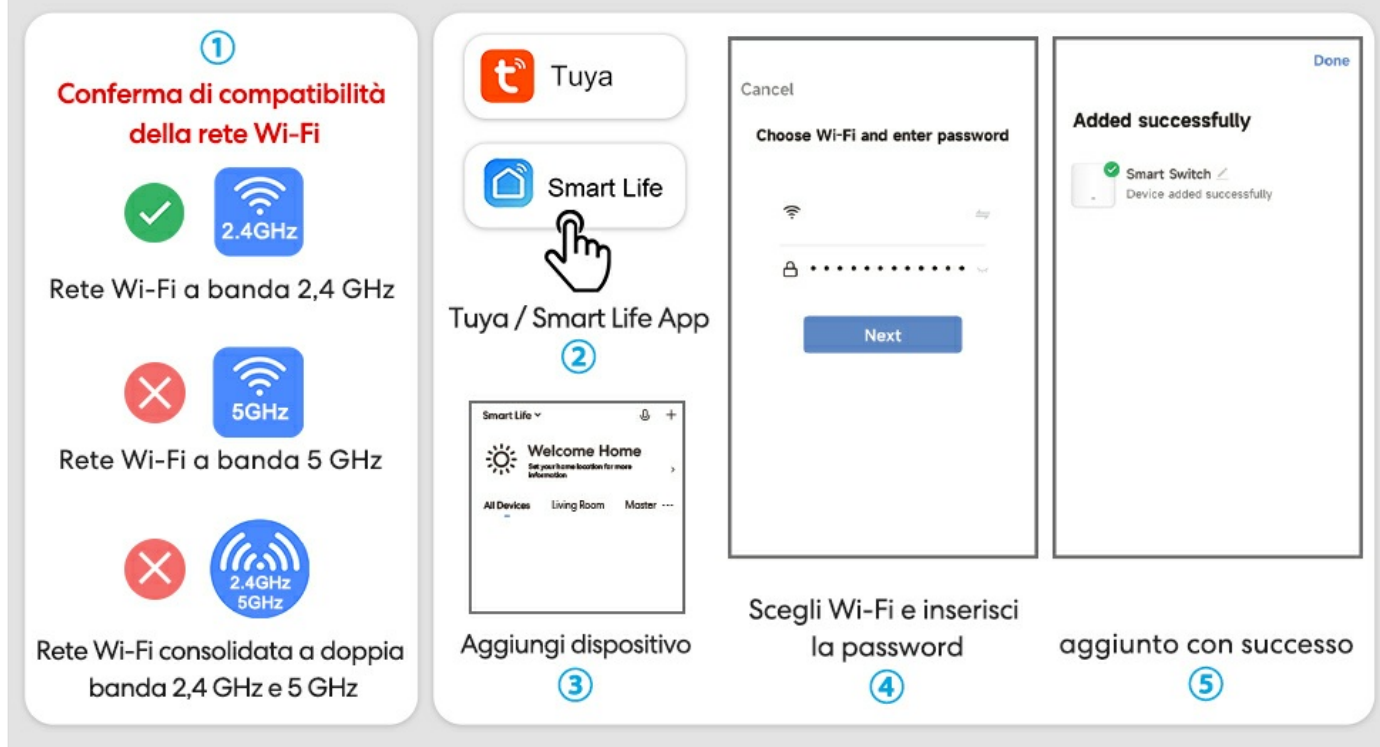


Image: Step-by-step guide for pairing the device with the Smart Life/Tuya app, including Wi-Fi compatibility check (2.4GHz only), adding device, selecting Wi-Fi, entering password, and successful addition.

Wi-Fi Network Compatibility: The device only supports 2.4GHz Wi-Fi networks. It is not compatible with 5GHz networks or consolidated dual-band 2.4GHz/5GHz networks. Ensure your router is set to 2.4GHz or has a separate 2.4GHz band enabled for pairing.

La posizione di installazione del dispositivo deve essere entro 10 metri del router Wi-Fi per garantire un buon segnale Wi-Fi.

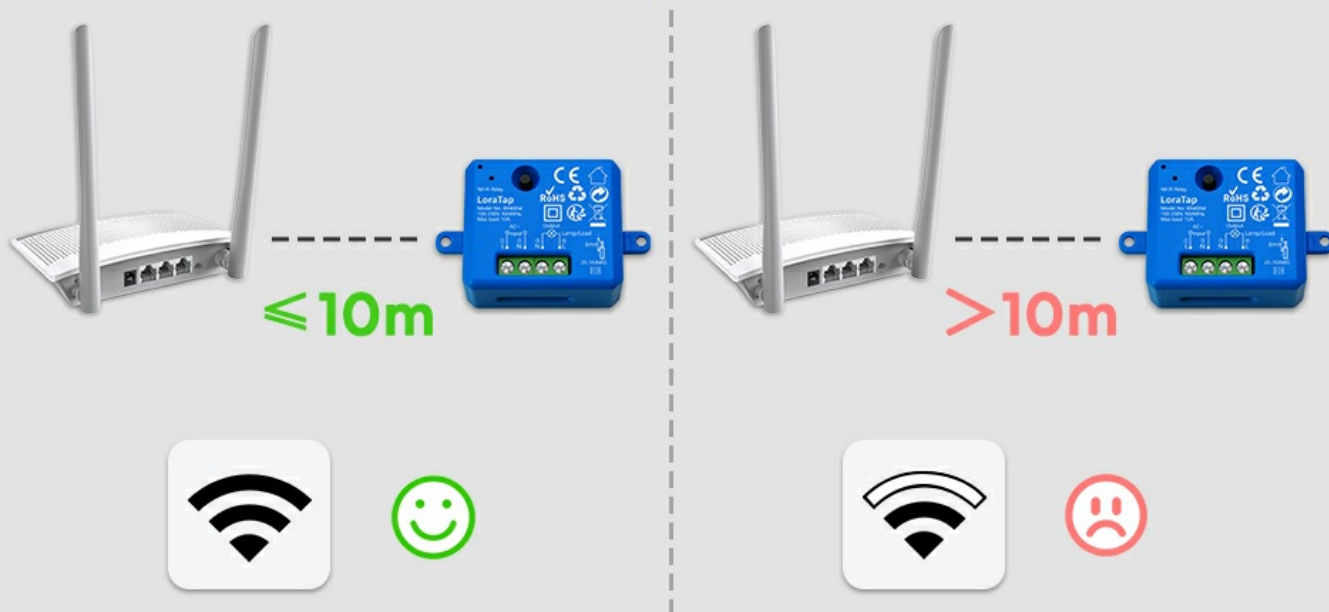


Image: Illustration showing optimal Wi-Fi signal strength when the device is within 10 meters of the router, and poor signal beyond 10 meters.

For optimal performance, the device should be installed within 10 meters of your Wi-Fi router to ensure a strong and

stable Wi-Fi signal.

5. OPERATING INSTRUCTIONS

5.1 App Control

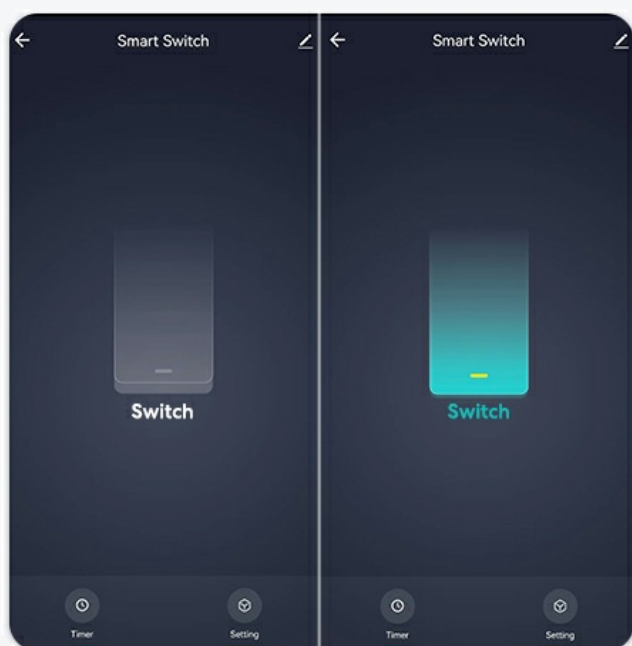
Control your connected appliance from anywhere using the Smart Life mobile app. You can turn devices on/off with a single tap, monitor their real-time status, and manage settings.



Image: A smartphone displaying the Smart Life app interface, showing a virtual switch to control a light, with options for timer and settings.

Feedback in tempo reale

Puoi monitorare lo stato della tua luce da qualsiasi luogo.



Tre stati di riavvio

Puoi impostare lo "stato di riavvio" del tuo dispositivo smart domestico (ACCESO, SPEGNO o Mantieni l'ultimo stato).

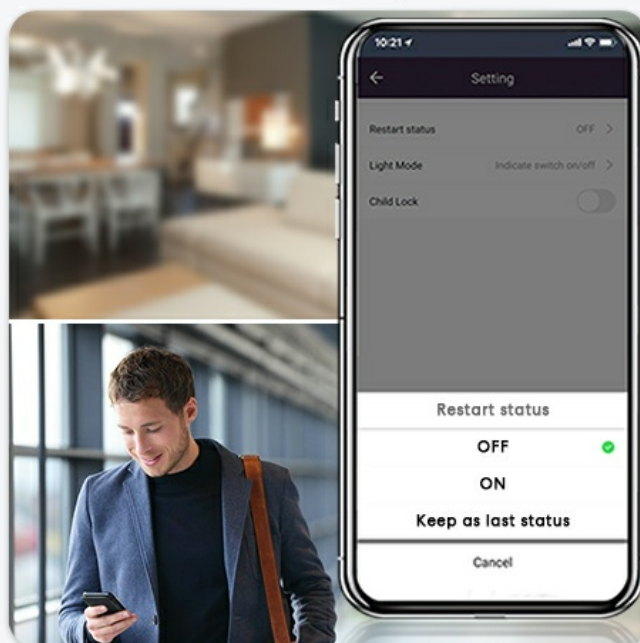


Image: Screenshots illustrating real-time feedback of the switch status in the app and settings for restart status (ON, OFF, Keep as last status).

5.2 Voice Control

The LoraTap Mini WiFi Switch is compatible with Amazon Alexa and Google Assistant. Once integrated, you can use voice commands to control your connected devices, such as "Alexa, turn on the lights."

Controllo vocale



Image: A person in a kitchen interacting with smart speakers (Alexa Echo, Google Home) to control lights, demonstrating voice control functionality.

5.3 Timer and Schedule Functions

Set schedules and timers to automatically turn your lights or appliances on/off according to your daily routine. This includes:

- **Schedule/Circulate:** Program specific times for daily or weekly operation.
- **Inching (Progressive Timer):** Automatically turns off the light after a set duration (e.g., 30 minutes) from when it was turned on. Adjustable from 1 second to 60 minutes.
- **Random:** Randomly turns lights on and off during a set period to simulate occupancy when you are away.



Image: Illustration of timer function (e.g., ON at 19:30) and countdown function (e.g., 15 minutes until OFF).



Image: Screenshot of the Smart Life app showing the 'Inching' timer setting, allowing users to set a duration for automatic turn-off.

5.4 Group Control and Device Sharing

Create groups for multiple smart relays to control them simultaneously with a single command. You can also share control of the smart relay with family members, allowing everyone in the household to manage the devices easily.

Adatto a ogni ambiente della tua casa

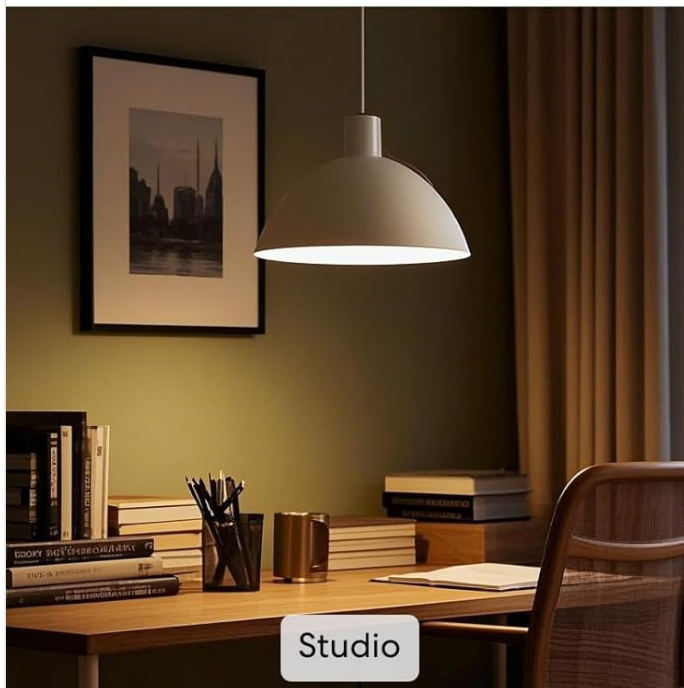


Image: Diagram illustrating how to share device control with multiple family members through the app.

5.5 Restart Status

You can configure the device's restart status (what state it returns to after a power outage):

- **ON:** Device turns on after power is restored.
- **OFF:** Device remains off after power is restored.
- **Keep as last status:** Device returns to its state before the power outage.

6. MAINTENANCE

The LoraTap Mini WiFi Switch is designed for low maintenance. Keep the device in a dry environment and avoid exposure to extreme temperatures or moisture. Periodically check wiring connections to ensure they remain secure. Do not attempt to disassemble or repair the device yourself, as this will void the warranty and may pose safety risks.

7. TROUBLESHOOTING

- **Device not connecting to Wi-Fi:**

- Ensure your Wi-Fi network is 2.4GHz. The device does not support 5GHz.
- Check that the device is within 10 meters of your Wi-Fi router.
- Verify your Wi-Fi password is correct.
- Restart your router and try pairing again.

- **Voice control not working:**

- Ensure the device is successfully paired with the Smart Life app.
- Link your Smart Life account to Alexa or Google Home app.
- Check your voice commands for accuracy.

- **Device not responding:**

- Check the power supply to the device.
- Verify your Wi-Fi connection is stable.
- If the issue persists, try resetting the device (refer to app instructions for reset procedure) and re-pairing.

Note: This device is not compatible with traditional wall switches, dimmer switches, or dimmable lights.

Dimensioni

😊 Così piccolo



VS

😞 Così grande



Il dispositivo non supporta la connessione a interruttori murali, interruttori dimmer o luci dimmabili.



Interruttore murale



Interruttore di luce dimmer

Image: Comparison of the LoraTap module's small size versus a larger module, and illustrations showing incompatibility with standard wall switches and dimmer switches.

8. SPECIFICATIONS



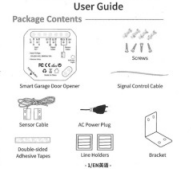
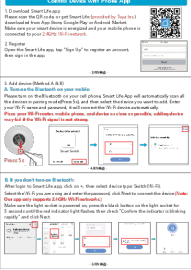
Brand	LoraTap
Model Number	RR400W
Rated Current	10 Amperes
Max Load	2500W
Input Voltage	100-250V, 50/60Hz
Dimensions	4.8 x 4.2 x 2.3 cm
Weight	120 grams

Contact Material	Silver
Mounting Type	Surface Mount
Certifications	CE, FCC

9. WARRANTY AND SUPPORT

The LoraTap Mini WiFi Switch comes with a 1-year warranty. For technical support, troubleshooting assistance, or warranty claims, please contact LoraTap customer service through the official website or your purchase platform. Please have your product model and purchase details ready when contacting support.

Related Documents - RR400W

	<p>LoraTap SC420W-EU Smart Curtain Switch Installation Guide</p> <p>Detailed installation instructions for the LoraTap SC420W-EU Smart Curtain Switch, compatible with Tuya Smart Life, Google Home, and Alexa voice assistants for controlling roller shutter electric motors.</p>
	<p>LoraTap Smart Curtain Switch User Manual</p> <p>User manual for the LoraTap Smart Curtain Switch, detailing installation, app control via Smart Life, and troubleshooting for Wi-Fi connected electric blinds and curtains.</p>
	<p>Smart Garage Door Opener User Guide and Installation Instructions</p> <p>Comprehensive user guide for the Loratap Smart Garage Door Opener, covering package contents, installation, app integration with Smart Life and Tuya, Wi-Fi setup, sensor mounting, wiring, and voice control via Amazon Alexa and Google Home.</p>
	<p>LoraTap BA101KS Smart Wi-Fi LED Light Socket User Guide</p> <p>Comprehensive user guide for the LoraTap BA101KS Smart Wi-Fi LED Light Bulb Socket Adapter, covering setup, app control, troubleshooting, and specifications.</p>



Comprehensive user guide for the LoraTap SC500W Roller Shutter Module, covering installation, wiring, setup with the Smart Life app, and troubleshooting for smart home automation.



Detailed installation guide and wiring instructions for the LoraTap SC500W smart curtain switch module. This document covers installation cautions, wiring for standard blinds and blinds with built-in drivers, and options for use without a physical manual switch, ensuring proper AC power connection for smart home automation.