

Kwikset 97402-858

Kwikset Pismo Keyed Entry Door Knob Instruction Manual

Model: 97402-858 | Finish: Matte Black

1. INTRODUCTION AND OVERVIEW

This manual provides detailed instructions for the installation, operation, and maintenance of your Kwikset Pismo Keyed Entry Door Knob. Designed for exterior-facing doors, this knob combines a contemporary aesthetic with robust security features, including Kwikset's SmartKey Security and Microban antimicrobial protection.



Figure 1: Kwikset Pismo Keyed Entry Door Knob in Matte Black, displaying both the exterior keyed side and the interior turn-piece side.

2. PRODUCT FEATURES

- **Keyed Entry:** Provides security for exterior doors, allowing locking/unlocking with a key from the outside and a turn-piece from the inside.
- **SmartKey Security:** Advanced technology that protects against common break-in methods and allows for self-rekeying in seconds.
- **Easy Installation:** Designed for do-it-yourself installation with basic tools, typically a screwdriver.
- **Standard Door Fit:** Compatible with standard door thicknesses from 1-3/8" to 1-3/4", featuring an adjustable

latch backset (2-3/8" to 2-3/4").

- **Microban Protection:** The door hardware is treated with Microban, inhibiting bacterial growth on frequently touched surfaces for a cleaner product.
- **Certified Quality:** Grade 1 BHMA certified for security, durability, and finish, ensuring high performance in various environments.
- **Contemporary Design:** Features a sleek, modern aesthetic with a matte black finish to complement various home decors.

3. WHAT'S IN THE BOX

Verify that all components are present before beginning installation:

- Keyed Exterior Knob
- Interior Knob
- Adjustable Latch (with Square and Round Front Options or a Drive-In Collar)
- Round Corner Strike
- SmartKey Tool
- 2 Kwikset Keys
- Installation Hardware (Screws, Allen Wrench)
- Installation Guide

WHAT'S IN THE BOX

- **Exterior Knob**
- **Interior Knob**
- **Adjustable Latch**
With Square and Round Front
Options or a Drive-In Collar
- **Round Corner Strike**
- **SmartKey® Tool**
- **2 Kwikset® Keys**
- **Installation Hardware**
- **Allen Wrench**



Figure 2: All components included with the Kwikset Pismo Keyed Entry Door Knob.

4. INSTALLATION

The Kwikset Pismo door knob is designed for easy, do-it-yourself installation. A screwdriver is the primary tool required.

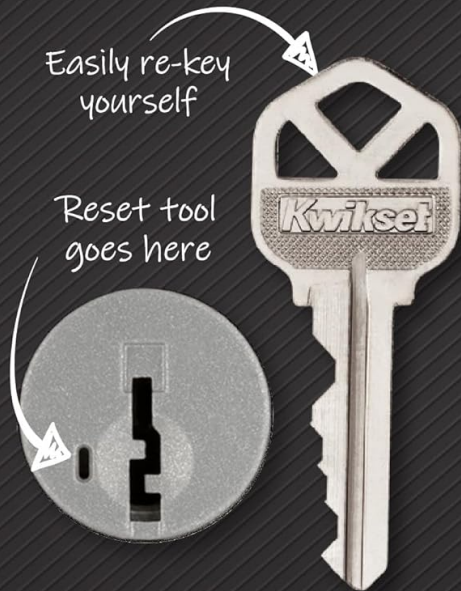
1. **Prepare the Door:** Ensure your door has standard bore holes and backset. The adjustable latch fits backsets of 2-3/8" or 2-3/4".
2. **Install the Latch:** Insert the adjustable latch into the door edge and secure it with screws.
3. **Prepare the Knobs:** Detach the knobs from the chassis using the provided Allen wrench to easily access mounting screw holes.
4. **Mount the Knobs:** Place the exterior and interior knobs onto the door, aligning the spindle through the latch. Secure with screws.
5. **Install the Strike Plate:** Attach the strike plate to the door frame, ensuring proper alignment with the latch.



SMARTKEY SECURITY™

ONE KEY FOR ALL YOUR LOCKS™

The lock you can
re-key yourself in
seconds for any
situation, including:



WITH PROTECTION AGAINST
ADVANCED BREAK-IN TECHNIQUES



**Recently
Moved**



**Lost
Keys**



**Multiple
Doors**



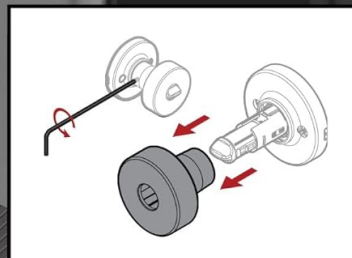
**Carry
Less Keys**

Figure 3: Visual guide illustrating the five main steps for installing the door knob.

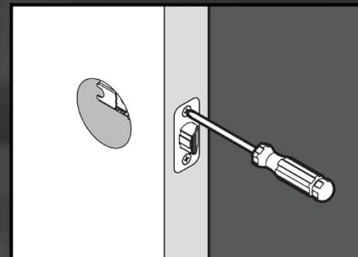
The universal design allows installation on both left-handed and right-handed doors.

EASY INSTALL

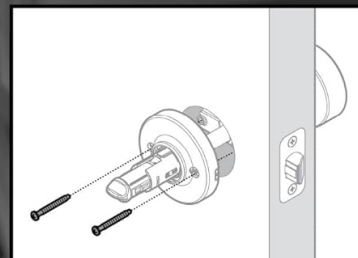
Easily access mounting screw holes by detaching the knob with the provided Allen wrench.



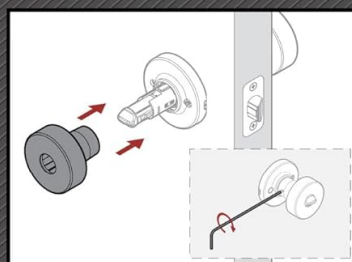
2 Remove Knob from Chassis with Allen Wrench



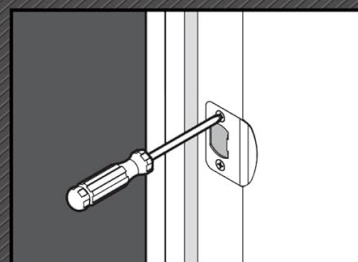
1 Screw in Adjustable Latch



3 Place Knob Rosette on Door and Secure with Screws



4 Reattach Knob to Chassis with Allen Wrench



5 Screw in Strike

Figure 4: The door knob's universal design allows for installation on both left- and right-handed doors.

5. SMARTKEY REKEYING

Kwikset's SmartKey Security allows you to rekey your lock yourself in seconds, providing convenience and enhanced security. This is useful if you've recently moved, lost keys, or want all your Kwikset locks to operate with a single key.

1. Insert your functioning key fully and turn it 90 degrees clockwise.
2. Insert the SmartKey tool firmly into the SmartKey hole until you feel a click. Remove the SmartKey tool.
3. Remove the original key.
4. Insert your new key fully and turn it 180 degrees counter-clockwise.
5. Remove the new key. The lock is now rekeyed to your new key.



Figure 5: Steps for using the SmartKey tool to rekey your lock.

Video 1: A user demonstrates the process of re-keying a Kwikset lock using the SmartKey tool. This video provides a visual guide to the rekeying steps.

6. OPERATION

The Kwikset Pismo Keyed Entry Door Knob allows for secure locking and convenient access.

- **From the Exterior:** Insert the key into the keyway and turn to lock or unlock the knob.
- **From the Interior:** Use the turn-piece on the interior knob to lock or unlock the door.
- **Ambidextrous Design:** The knob can be installed on both left-handed and right-handed doors without modification.

7. MAINTENANCE

To ensure the longevity and optimal performance of your Kwikset Pismo door knob, follow these maintenance guidelines:

- **Cleaning:** Clean the knob regularly with a soft, damp cloth. Avoid abrasive cleaners, solvents, or harsh chemicals, as these can damage the finish and the Microban protective coating.

- **Lubrication:** Periodically apply a silicone-based lubricant to the latch mechanism and keyway to ensure smooth operation. Do not use oil-based lubricants.
- **Microban Protection:** The Microban treatment is integrated into the finish and is designed to last the lifetime of the hardware, providing continuous antimicrobial protection.

8. TROUBLESHOOTING

If you encounter any issues with your Kwikset Pismo door knob, consider the following general troubleshooting steps:

- **Knob is Stiff:** Ensure the mounting screws are not overtightened. Apply a silicone-based lubricant to the latch and keyway.
- **Latch Not Engaging:** Check the alignment of the strike plate on the door frame. Adjust if necessary. Ensure the latch backset is correctly set for your door.
- **Key Not Working:** Verify you are using the correct key. If using SmartKey, ensure the rekeying process was completed correctly.

For persistent issues, please refer to the support section for contact information.

9. SPECIFICATIONS


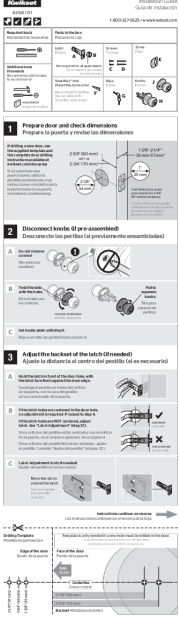

Specification	Detail
Model Number	97402-858
Material	Iron
Color	Matte Black
Product Dimensions	8.66"L x 3.36"W
Exterior Finish	Black
Specific Uses	Exterior door
Lock Type	Key Lock
Item Weight	1.67 pounds
Hand Orientation	Ambidextrous
Door Thickness Range	1-3/8" to 1-3/4"
Adjustable Latch Backset	2-3/8" to 2-3/4"
BHMA Certification	Grade 1 (Security, Durability, Finish)

10. WARRANTY AND SUPPORT

Kwikset products are backed by a **lifetime mechanical and finish warranty**. This warranty covers defects in material and workmanship for the lifetime of the original residential user. For detailed warranty information and terms, please refer to the official Kwikset website or the warranty card included with your product.

For customer support, technical assistance, or warranty claims, please visit the [Kwikset Store on Amazon](#) or contact Kwikset directly through their official channels.

Related Documents - 97402-858

 <p>ALISO KEYED ENTRY KNOB</p> <p>Model 400AO 11P SMT</p> <p>Discover the Kwikset Aliso Keyed Entry Knob (Model 400AO 11P SMT) featuring SmartKey Security, easy installation, and a lifetime mechanical and finish warranty. Learn about its features and specifications.</p>	<p>Kwikset Aliso Keyed Entry Knob - SmartKey Security, Lifetime Warranty</p> <p>Discover the Kwikset Aliso Keyed Entry Knob (Model 400AO 11P SMT) featuring SmartKey Security, easy installation, and a lifetime mechanical and finish warranty. Learn about its features and specifications.</p>
 <p>62541/01 Tylo Door Lock</p> <p>Step-by-step installation guide for the Kwikset 62541/01 Tylo door lock featuring SmartKey Security. Includes required tools, parts, and detailed instructions for door preparation, latch adjustment, knob installation, and strike plate fitting.</p>	<p>Kwikset 62541/01 Tylo Door Lock Installation Guide</p> <p>Step-by-step installation guide for the Kwikset 62541/01 Tylo door lock featuring SmartKey Security. Includes required tools, parts, and detailed instructions for door preparation, latch adjustment, knob installation, and strike plate fitting.</p>
 <p>Handleset Installation and SmartKey Rekeying Guide</p> <p>Comprehensive installation guide for Kwikset handlesets, including step-by-step instructions, recommended tools, screw references, and SmartKey rekeying procedures. Learn how to install your Kwikset door hardware.</p>	<p>Kwikset Handleset Installation and SmartKey Rekeying Guide</p> <p>Comprehensive installation guide for Kwikset handlesets, including step-by-step instructions, recommended tools, screw references, and SmartKey rekeying procedures. Learn how to install your Kwikset door hardware.</p>

