



[Manuals.plus](#) /

› [Forte](#) /

› FORTE BXF121001 Flex PVC Shower Screen Instruction Manual

Forte BXF121001

FORTE BXF121001 Flex PVC Shower Screen Instruction Manual

Model: **BXF121001** | Brand: **Forte**

1. INTRODUCTION

This manual provides detailed instructions for the installation, operation, and maintenance of your FORTE BXF121001 Flex PVC Shower Screen. Please read this manual thoroughly before installation and keep it for future reference. This shower screen is designed for durability and practicality, featuring a flexible PVC structure and anti-limescale properties.



Image 1.1: FORTE BXF121001 Flex PVC Shower Screen (Closed)



Image 1.2: FORTE BXF121001 Flex PVC Shower Screen (Open)

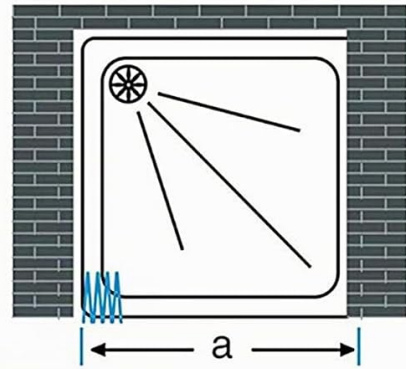
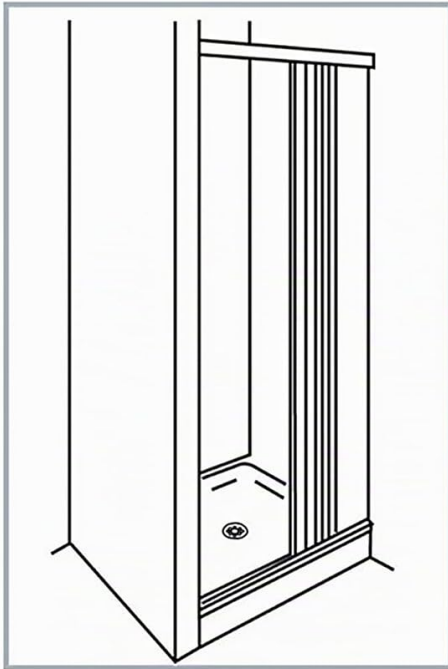
2. PRODUCT FEATURES

- **Anti-Limescale Resin:** Constructed from durable, UV-resistant PVC, ideal for space-saving and practical needs.
- **Certified Quality:** Conforms to CE standards, features shockproof panels, high corrosion resistance, and high stability.
- **Easy Maintenance:** Can be cleaned with any non-aggressive household cleaning product.
- **Flexible Application:** The PVC profile texture allows for installation in various shower structures.
- **Made in Italy:** This product is entirely manufactured in Italy, ensuring high-quality craftsmanship.

3. SPECIFICATIONS

Specification	Detail
Model Number	BXF121001
Brand	Forte
Door Style	Bi-Fold
Finish Type	PVC
Product Dimensions (D x W x H)	5P x 100I x 185H centimeters (Adjustable width 100-80 cm)
Material	Polyvinyl Chloride (PVC)
Installation Type	Freestanding
Shape	Rectangular
Item Weight	9 Kilograms
Number of Doors	1
Color	White
Assembly Required	Yes
Spare Parts Availability	2 Years

h 185



Ouverture réversible

Mesures de largeur compatibles de 100 à 80 cm

Image 3.1: Dimensions and Reversible Opening Feature

4. PACKAGE CONTENTS

Please check that all components are present and undamaged before beginning assembly.

- PVC Shower Screen Panels
- Stainless Steel Screws
- ABS Handle
- Illustrated Assembly Instructions
- Mounting Profiles and Gaskets

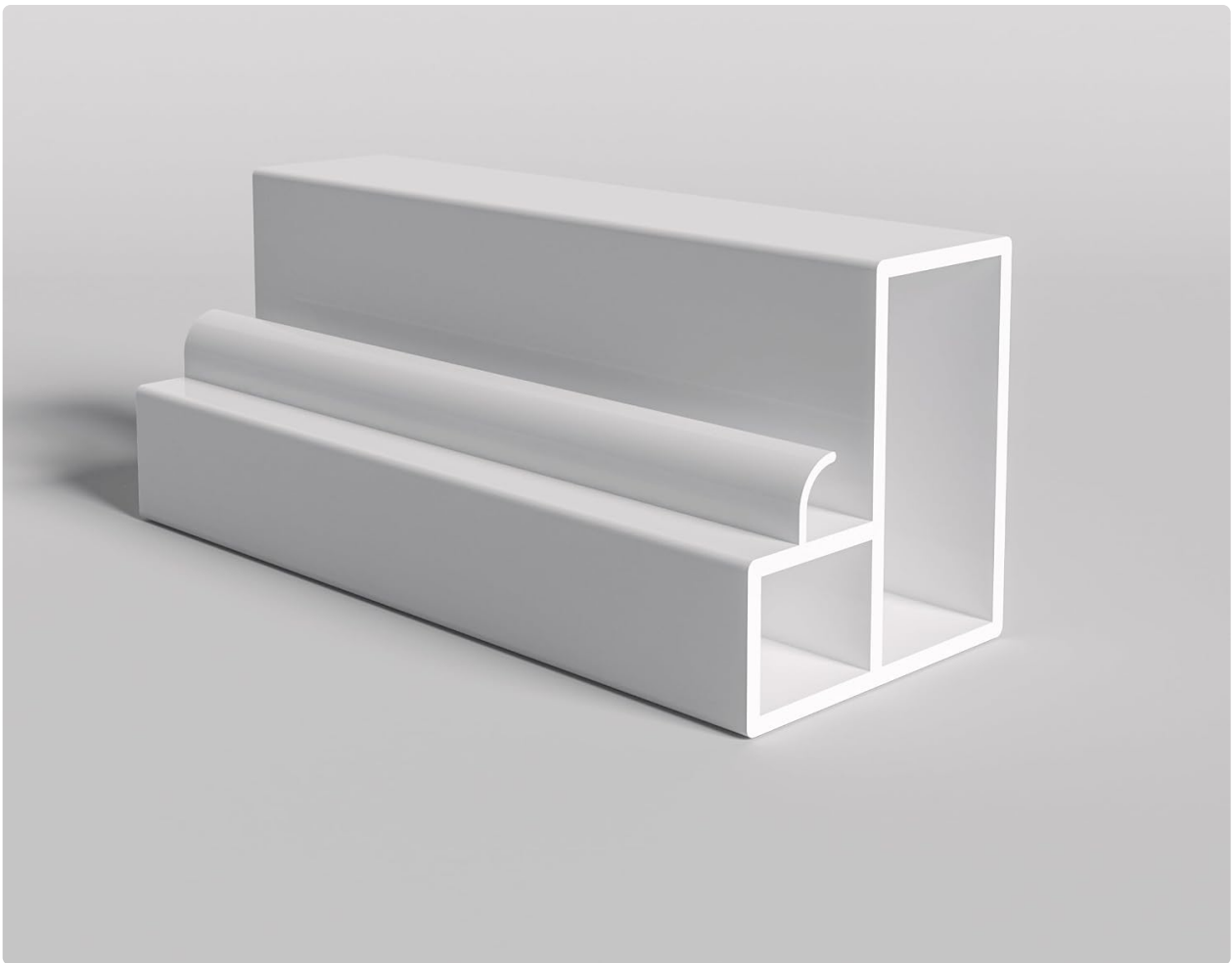


Image 4.1: Example of a PVC Profile Component

5. SAFETY INFORMATION

- Always wear appropriate safety gear, such as gloves and eye protection, during installation.
- Ensure the installation surface is clean, dry, and structurally sound.
- Do not overtighten screws, as this may damage the PVC material.
- Keep small parts out of reach of children to prevent choking hazards.
- If you are unsure about any step of the installation, consult a qualified professional.

6. SETUP AND INSTALLATION

The FORTE BXF121001 shower screen is designed for straightforward assembly. Refer to the included illustrated assembly instructions for detailed, step-by-step guidance. Below are general steps and important considerations:

1. **Preparation:** Unpack all components and verify against the package contents list. Ensure you have all necessary tools (e.g., drill, screwdriver, level, measuring tape).
2. **Measure and Mark:** Carefully measure the desired installation area. The shower screen is adjustable in width from 100 cm down to 80 cm. Mark the positions for the wall profiles.
3. **Install Wall Profiles:** Secure the vertical wall profiles to the wall using the provided stainless steel screws and appropriate wall plugs (not always included, check instructions). Ensure they are perfectly vertical using a spirit level.
4. **Assemble Panels:** Connect the PVC panels according to the illustrated instructions. Pay attention to the

orientation for the reversible opening feature.

5. **Attach Panels to Profiles:** Carefully insert the assembled shower screen panels into the installed wall profiles.
6. **Install Handle:** Attach the ABS handle to the designated panel.
7. **Seal Gaps:** Apply silicone sealant along the exterior joints between the wall profiles and the wall, and along the bottom edge of the shower screen where it meets the shower tray or floor, to ensure a watertight seal. Allow adequate drying time before use.

Note: The shower screen features a reversible opening, allowing it to be installed for left or right-hand opening depending on your bathroom layout.

7. OPERATING INSTRUCTIONS

The FORTE BXF121001 shower screen operates with a bi-fold mechanism, allowing it to fold inwards to save space when not in use.

- **Opening:** Gently pull the ABS handle to unfold the panels outwards, creating an entry space into the shower area.
- **Closing:** Push the panels inwards until they fully extend and meet, forming a complete enclosure for showering. Ensure the panels are properly aligned to prevent water leakage.



Image 7.1: ABS Handle Detail

8. MAINTENANCE

Regular cleaning and maintenance will ensure the longevity and optimal performance of your shower screen.

- **Cleaning:** Clean the PVC panels and profiles regularly with a soft cloth and any non-aggressive household cleaning product. Avoid abrasive cleaners, scouring pads, or strong chemical solvents, as these can damage the PVC and anti-limescale coating.
- **Limescale Prevention:** The anti-limescale resin helps reduce buildup. For best results, wipe down the panels after each use to minimize water spots and limescale accumulation.
- **Hinge and Runner Check:** Periodically check the hinges and runners for smooth operation. If they become stiff, clean them and apply a small amount of silicone-based lubricant if necessary (avoid oil-based lubricants).
- **Seal Integrity:** Inspect the silicone seals around the shower screen periodically. If any seals show signs of wear, cracking, or mold, they should be cleaned or replaced to prevent leaks.

9. TROUBLESHOOTING

Problem	Possible Cause	Solution
Water leakage from the bottom or sides.	Improper sealing during installation; worn or damaged seals; incorrect panel alignment.	Check silicone seals and reapply if necessary. Ensure panels are fully closed and aligned. Inspect bottom gaskets for damage.
Shower screen panels are stiff or difficult to open/close.	Accumulation of dirt or limescale in hinges/runners; misaligned panels.	Clean hinges and runners thoroughly. Apply a silicone-based lubricant. Check for proper panel alignment.
Panels do not close completely.	Obstruction; misaligned wall profiles; damaged panel.	Check for any objects blocking the panels. Verify wall profile alignment. Inspect panels for damage.

10. WARRANTY AND SUPPORT

Your FORTE BXF121001 Flex PVC Shower Screen comes with a **2-year warranty** on spare parts availability from the date of purchase.

For technical assistance, spare parts, or warranty claims, please contact your retailer or the manufacturer directly. Ensure you have your proof of purchase and model number (BXF121001) ready when contacting support.

Manufacturer: Forte

Country of Origin: Italy