

## VOLANTEXRC 3.7V 400mAh Lipo Rechargeable Battery

# VOLANTEXRC 3.7V 400mAh Lipo Rechargeable Battery Instruction Manual

Model: 3.7V 400mAh Lipo Rechargeable Battery

## 1. INTRODUCTION

This manual provides essential instructions for the safe and effective use of your VOLANTEXRC 3.7V 400mAh Lipo Rechargeable Batteries. These batteries are designed as replacement parts for various VOLANTEXRC remote control airplanes. Please read this manual thoroughly before use to ensure proper handling and to maximize battery lifespan.

## 2. SAFETY INFORMATION

**WARNING: Lithium Polymer (LiPo) batteries can be dangerous if not handled correctly. Failure to follow these safety guidelines may result in fire, personal injury, or property damage.**

- Do not charge the battery immediately after use. Allow it to cool down before recharging.
- Always use a charger specifically designed for LiPo batteries.
- Never leave charging batteries unattended.
- Do not overcharge or over-discharge the battery.
- Avoid short-circuiting the battery terminals.
- Do not puncture, drop, or expose the battery to extreme temperatures or direct sunlight.
- Store batteries in a cool, dry place, away from flammable materials.
- If the battery swells, leaks, or shows any signs of damage, discontinue use immediately and dispose of it properly.

## 3. PRODUCT SPECIFICATIONS

The VOLANTEXRC 3.7V 400mAh Lipo Rechargeable Battery offers reliable power for compatible RC aircraft.

- **Battery Type:** Lithium Polymer (LiPo)
- **Voltage:** 3.7V
- **Capacity:** 400mAh
- **Watt Hours:** 1.48 Wh

- **Weight:** Approximately 8g
- **Dimensions:** Approximately 1.97 x 1.97 x 1.97 inches (Note: These dimensions may refer to packaging, actual battery size will be smaller)

**Compatible RC Airplane Models:**

- VOLANTEXRC 761-2 Ranger 600
- VOLANTEXRC 761-3 Super Cub 500
- VOLANTEXRC 761-4 Sport Cub 500
- VOLANTEXRC 761-5 P-51
- VOLANTEXRC 761-8 F4U Corsair
- VOLANTEXRC 761-9 T28 Trojan



*Image 1: Two VOLANTEXRC 3.7V 400mAh Lipo rechargeable batteries. Each battery features a white connector and red and black wires.*

## 4. SETUP AND INSTALLATION

Follow these steps to properly install the battery into your compatible VOLANTEXRC airplane:

1. **Access Battery Compartment:** Locate the battery compartment on your RC airplane. This is typically found in the fuselage.
2. **Propeller Installation (if applicable):** If your model requires propeller installation or re-installation, ensure it is securely attached to the shaft adapter. Refer to your airplane's specific manual for

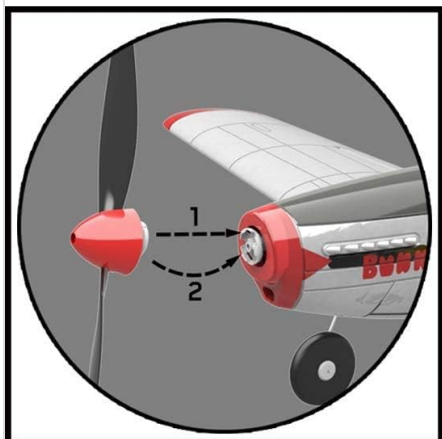
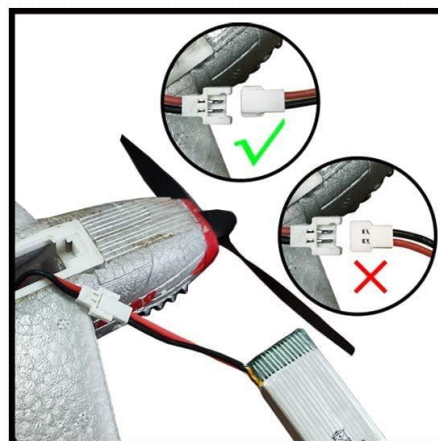
detailed propeller installation instructions.

3. **Battery Connection:** Carefully connect the battery's white connector to the corresponding port inside the airplane's battery compartment. Ensure the connection is firm and correctly oriented (positive to positive, negative to negative). **CAUTION: Connect the battery properly. Incorrect connection can damage the battery or the aircraft.**
4. **Secure Battery:** Place the battery securely within the compartment to prevent movement during flight.
5. **Close Compartment:** Close the battery compartment cover.



Install the prop to the shaft adapter to fly again. Insert a screwdriver into the front end of the battery compartment, hold the screwdriver against the back cover of the motor, and then push the motor forward until it returns to normal position.

**CAUTION: Connect the battery properly follow the instruction carefully.**



**Install the prop to the shaft adapter to fly again.**

*Image 2: This diagram illustrates the correct method for connecting the battery (green checkmark) and an incorrect connection (red cross). It also shows the two-step process for installing a propeller onto the shaft adapter.*

## 5. OPERATING INSTRUCTIONS

Once the battery is installed and charged, your RC airplane is ready for operation. Always refer to your specific airplane's instruction manual for flight procedures.

- **Pre-Flight Check:** Before each flight, ensure the battery is fully charged and securely connected. Verify all controls are functioning correctly.
- **Flight Duration:** Monitor your flight time to avoid over-discharging the battery, which can reduce its

lifespan.

- **Post-Flight:** After flying, disconnect the battery from the airplane. Allow the battery to cool down to room temperature before recharging.

## 6. CHARGING THE BATTERY

---

Proper charging is crucial for the longevity and safety of your LiPo battery.

- Use only the charger provided with your VOLANTEXRC airplane or a compatible LiPo charger.
- Connect the battery to the charger. Ensure the charger settings match the battery specifications (3.7V, 400mAh).
- Monitor the charging process. Disconnect the battery once charging is complete.
- **Important:** Do not charge the battery immediately after use. Allow it to cool down for at least 15-20 minutes before initiating a charge cycle.

## 7. MAINTENANCE AND STORAGE

---

Following these guidelines will help maintain your battery's performance and extend its life:

- **Storage Temperature:** Store batteries in a cool, dry environment, ideally between 5°C and 25°C (41°F and 77°F).
- **Storage Charge:** For long-term storage, charge the battery to approximately 3.8V per cell (around 50-60% of its capacity). Do not store fully charged or fully discharged batteries.
- **Inspection:** Regularly inspect batteries for any signs of damage, swelling, or leakage. Discontinue use and dispose of damaged batteries immediately.
- **Disposal:** Dispose of LiPo batteries responsibly according to local regulations. Never throw them in household trash.

## 8. TROUBLESHOOTING

---

If you encounter issues with your battery, consider the following common solutions:

- **Battery Not Charging:**
  - Ensure the charger is properly connected to a power source and the battery.
  - Verify the charger is compatible with LiPo batteries and set to the correct voltage/current.
  - Check for any visible damage to the battery or charger cables.
- **Short Flight Time:**
  - The battery may not be fully charged.
  - The battery may be old or damaged and losing capacity.
  - Environmental factors (e.g., cold weather) can affect battery performance.
- **Battery Swelling:**
  - Immediately discontinue use. This indicates internal damage and a potential safety hazard.
  - Dispose of the battery safely and replace it.

## 9. ADDITIONAL PRODUCT IMAGES

---



Image 3: VOLANTEXRC 3.7V 400mAh batteries displayed alongside various compatible RC airplanes, including the Ranger 600 and Super Cub 500 models.





*Image 4: VOLANTEXRC 3.7V 400mAh batteries presented with different color variations of the Sport Cub 500 RC airplane.*



Image 5: VOLANTEXRC 3.7V 400mAh batteries alongside various P-51 Mustang RC airplane models.



Image 6: VOLANTEXRC 3.7V 400mAh batteries displayed with different F4U Corsair RC airplane models.





Image 7: VOLANTEXRC 3.7V 400mAh batteries shown with various T28 Trojan RC airplane models.

© 2023 VOLANTEXRC. All rights reserved.






For further assistance, please visit the official VOLANTEXRC website or contact customer support.

## Related Documents - 3.7V 400mAh Lipo Rechargeable Battery



### [VolantexRC Ranger 600S Stunt RC Airplane User Manual](#)

Comprehensive user manual for the VolantexRC Ranger 600S Stunt RC Airplane, covering setup, operation, safety, and advanced features like X-PILOT and one-key functions. Includes detailed instructions for charging, binding, control surface calibration, and flight preparation.

|   |  |
|---|--|
|  <p>VOLANTE<sup>RC</sup></p> <p>LEGEND WARBIIRD SERIES<br/>USER MANUAL</p> <p>76111<br/>v01 1/2023</p> | <p><a href="#">Volantex RC Legend Warbird Series User Manual</a></p> <p>Comprehensive user manual for the Volantex RC Legend Warbird Series (Model 76111), covering setup, operation, safety precautions, battery usage, transmitter functions, and maintenance for this hobby-grade RC airplane.</p>    |
|  <p>VOLANTE<sup>RC</sup></p> <p>LEGEND WARBIIRD SERIES<br/>USER MANUAL</p> <p>76105<br/>v07 1/2023</p> | <p><a href="#">VolantexRC Legend Warbird Series User Manual 76105</a></p> <p>Comprehensive user manual for the VolantexRC Legend Warbird Series RC aircraft (model 76105), detailing safety, setup, operation, charging, and maintenance for optimal flight.</p>   |
|  <p>VOLANTE<sup>RC</sup></p> <p>LEGEND WARBIIRD SERIES<br/>USER MANUAL</p>                             | <p><a href="#">VolantexRC Legend Warbird Series User Manual</a></p> <p>Comprehensive user manual for the VolantexRC Legend Warbird Series remote control toy airplane, covering safety precautions, battery usage, setup, operation, and maintenance.</p>  |
|  <p>VOLANTE<sup>RC</sup></p> <p>6-AXIS GYRO EASY FLYING TRAINER<br/>USER MANUAL</p>                  | <p><a href="#">VolantexRC Trainstar Mini User Manual - 6-Axis Gyro Easy Flying Trainer</a></p> <p>Comprehensive user manual for the VolantexRC Trainstar Mini, a 6-axis gyro assisted RC airplane designed for beginners. Includes safety, setup, charging, operation, and maintenance instructions.</p> |
|  <p>PHOENIX 2400</p> <p>Phoenix V2</p> <p>User Manual</p>  | <p><a href="#">Volantex Phoenix 2400 V2 User Manual</a></p> <p>Comprehensive user manual for the Volantex Phoenix 2400 V2 RC airplane, covering safety precautions, installation, flight checks, flying techniques, and charging instructions.</p>   |

