

## Thinkbee SwitchKit

# Thinkbee Wireless Light Switch and Receiver Kit Instruction Manual

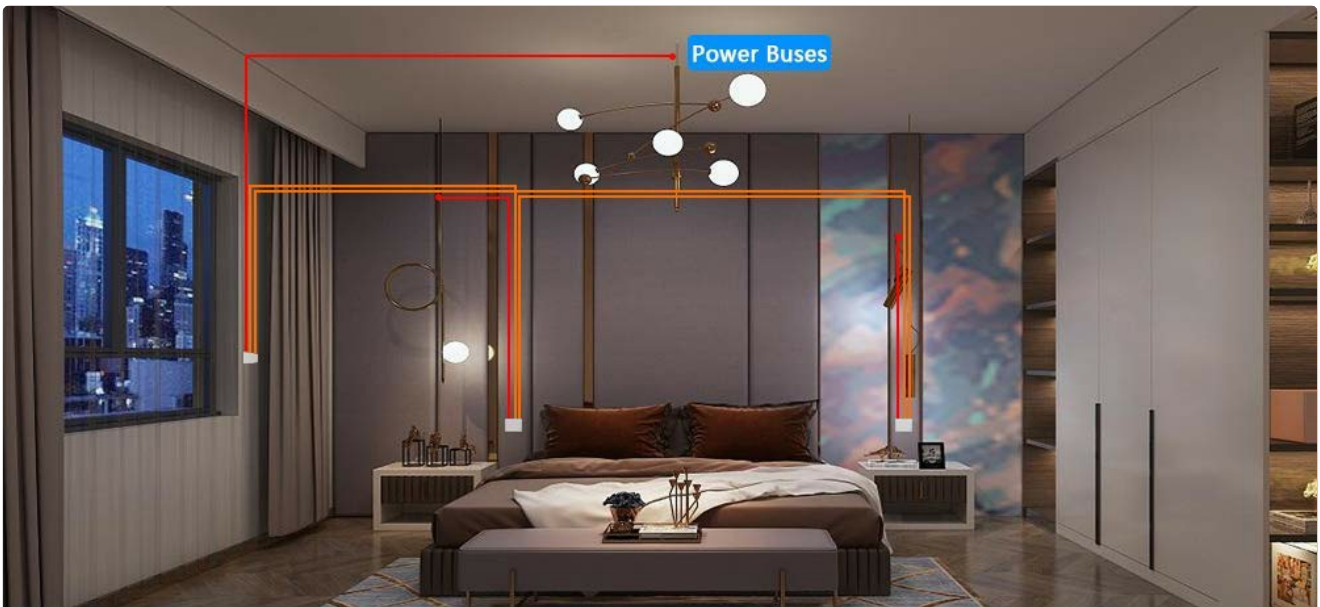
Model: SwitchKit

## 1. PRODUCT OVERVIEW

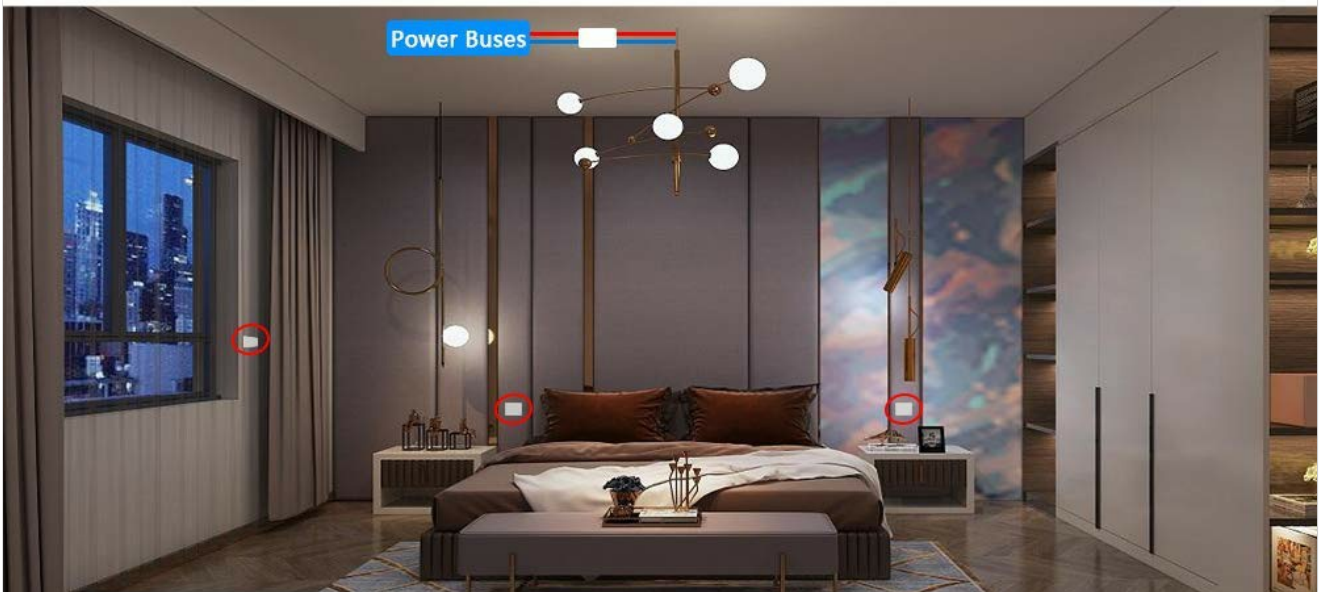
---

The Thinkbee Wireless Light Switch and Receiver Kit provides a convenient and flexible solution for controlling your lighting without the need for complex wiring. This self-powered switch system allows you to control lights from anywhere within its effective range, offering ease of installation and versatile application.

The kit includes a wireless switch panel and a mini receiver. The switch panel is designed to look like a traditional wall switch but operates wirelessly, sending signals to the receiver to control connected lights. The receiver is compact and can be installed in various electrical boxes.

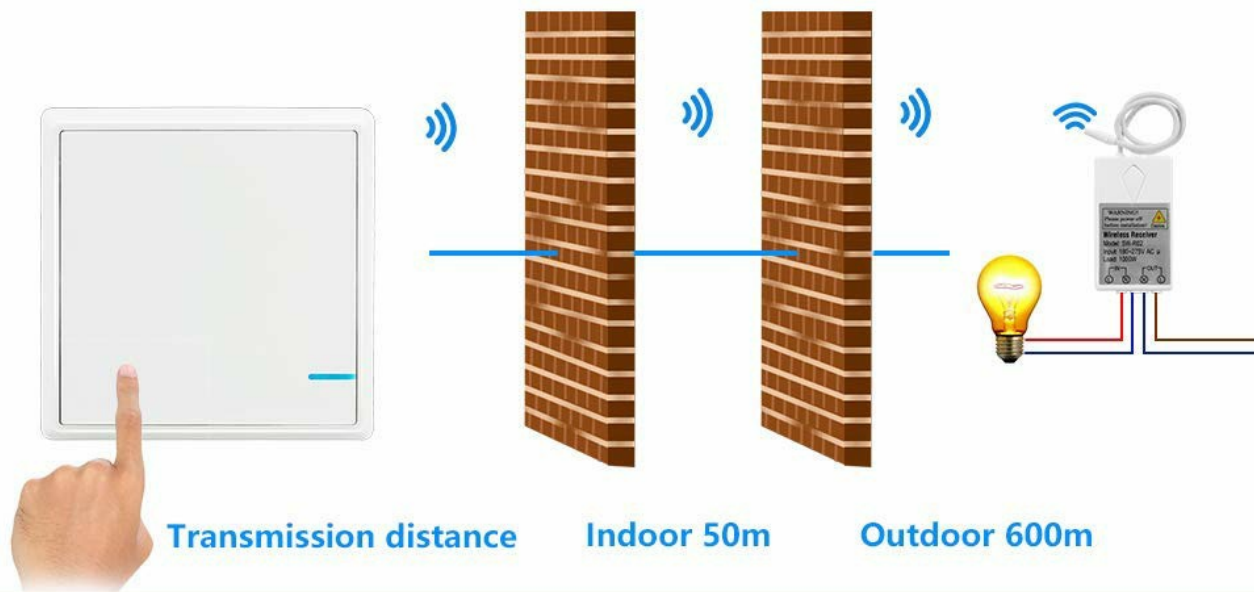


## Traditional Switch VS Thinkbee Wireless Switch



**Image 1: Traditional Switch vs. Thinkbee Wireless Switch.** This image illustrates the difference in wiring complexity between a traditional light switch system (top) and the Thinkbee Wireless Switch system (bottom). The traditional system shows extensive wiring through walls, while the wireless system eliminates the need for new wiring to the switch location, simplifying installation.

## Signal can go through walls



## Small Receiver Easily Fits into Mutil Wiring Boxes

(like canopy, junction box, electrical box, etc.)



**Image 2: Signal Penetration and Receiver Size.** This diagram shows the wireless signal from the switch panel passing through walls, indicating an indoor transmission distance of up to 50m and an outdoor distance of up to 600m. It also highlights the compact size of the receiver, which easily fits into various wiring boxes like canopies, junction boxes, or electrical boxes. Key benefits such as IP54 waterproof rating, easy installation, energy saving, no wiring, anti-interference, and long-distance remote control are listed.

**Video 1: Thinkbee Wireless Light Switches Overview.** This video provides a general overview of the Thinkbee Wireless Light Switch system, demonstrating its functionality and ease of use in various home settings. It highlights the convenience of wireless control for lighting.

## 2. SETUP AND INSTALLATION

### 2.1 Components

- 1 x Wireless Switch Panel
- 1 x Mini Receiver
- 2 x Adhesive Rubbers

### 2.2 Wiring the Receiver

**Caution: Please power off the main electrical supply before beginning any installation to prevent electric**

shock.

1. Identify the live and neutral wires from your power supply and the lamp.
2. Connect the input Zero Fire Line (Neutral) and Live Line from your power supply to the corresponding input ports on the mini receiver.
3. Connect the output Zero Fire Line (Neutral) and Live Line from the mini receiver to the corresponding wires of your lamp.
4. Ensure all connections are secure and insulated.



**Image 3: Switch Dimensions and Receiver Wiring.** This image displays the dimensions of the wireless switch panel (86mm x 86mm x 11mm) and the mini receiver (113mm x 39mm x 23mm). It also provides a clear wiring diagram for the receiver, showing connections for Input Live Line, Input Neutral Line, Output Neutral Line, and Output Live Line, along with the pairing key and antenna.

**Video 2: Install Thinkbee Wireless Light Switch Easily.** This video demonstrates the step-by-step process of installing the Thinkbee wireless light switch, focusing on the wiring of the receiver and its integration with existing lighting fixtures. It emphasizes the simplicity of the installation process.

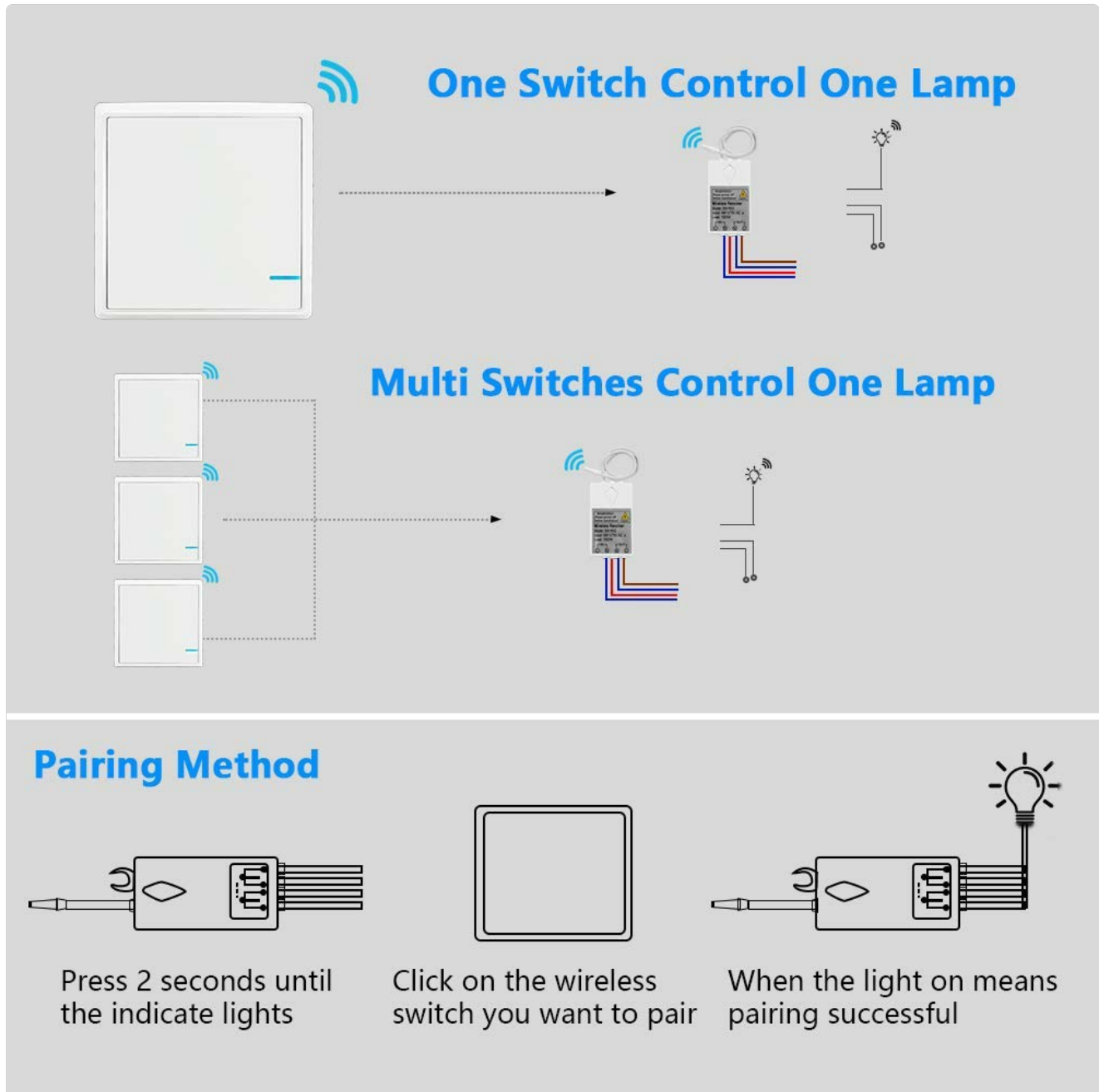
## 2.3 Mounting the Switch Panel

The wireless switch panel can be mounted on any flat surface using the provided adhesive rubbers. No electrical box is required for the switch panel itself, offering flexibility in placement.

## 2.4 Pairing the Switch and Receiver

After wiring the receiver and restoring power:

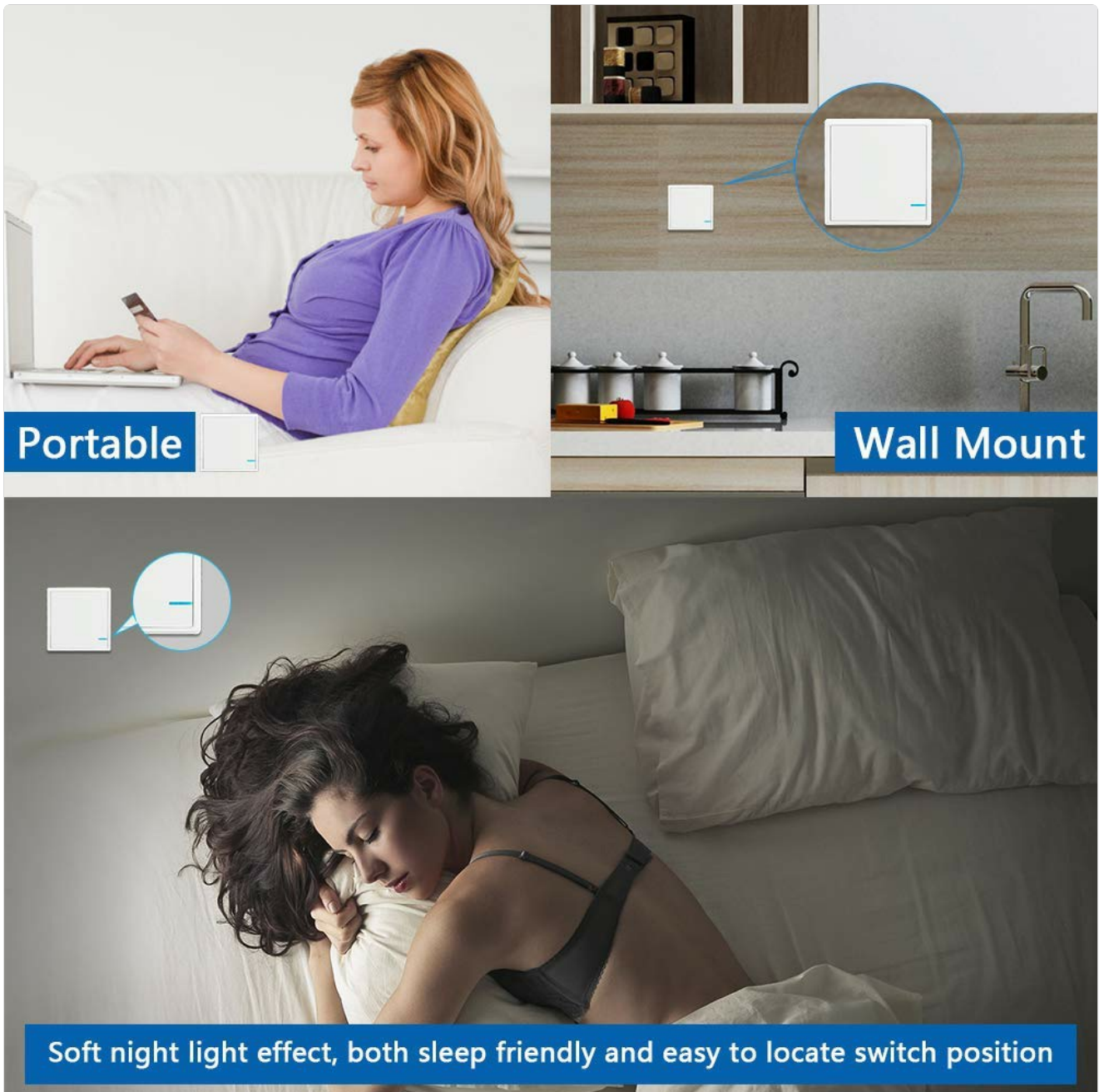
1. Press and hold the pairing key on the receiver for 2 seconds until the indicator light on the receiver starts flashing.
2. Within 10 seconds, click the wireless switch panel you wish to pair.
3. The indicator light on the receiver will stop flashing and the connected light will turn on, indicating successful pairing.
4. One receiver can be paired with up to 8 switch panels.



**Image 4: Pairing Method.** This diagram illustrates the pairing process: 1) Press the receiver button for 2 seconds until the indicator lights; 2) Click the wireless switch to pair; 3) The light turning on signifies successful pairing. It also shows configurations for one switch controlling one lamp and multiple switches controlling one lamp.

## 3. OPERATING INSTRUCTIONS

Once paired, simply press the lower half of the wireless switch panel to toggle the connected light(s) on or off. The switch panel features a small indicator light that flashes briefly to confirm a successful press.



**Image 5: Portable and Wall Mount Usage.** This image demonstrates the versatility of the wireless switch, showing it being used as a portable remote control (e.g., on a couch) and also mounted on a wall. It highlights the soft night light effect for easy location in the dark.

## 4. MAINTENANCE

---

The Thinkbee Wireless Light Switch is designed for long-term use with minimal maintenance. The switch button is rated for 600,000 presses, and the receiver for 400,000 operations. The internal lithium battery in the switch panel has a lifespan of approximately 10 years, reducing the need for frequent battery replacements.

To clean the switch panel, wipe it with a soft, dry cloth. Avoid using harsh chemicals or abrasive materials.

## 5. TROUBLESHOOTING

---

- **Light not responding:** Ensure the receiver is properly wired and receiving power. Check if the switch panel is within the effective range (130ft indoors, 1969ft outdoors). Re-pair the switch and receiver if necessary.

- **Indicator light on switch not flashing:** The internal battery of the switch panel might need replacement if it has exceeded its lifespan.
- **Interference:** While designed with anti-interference features, ensure there are no strong radio frequency sources directly interfering with the signal.

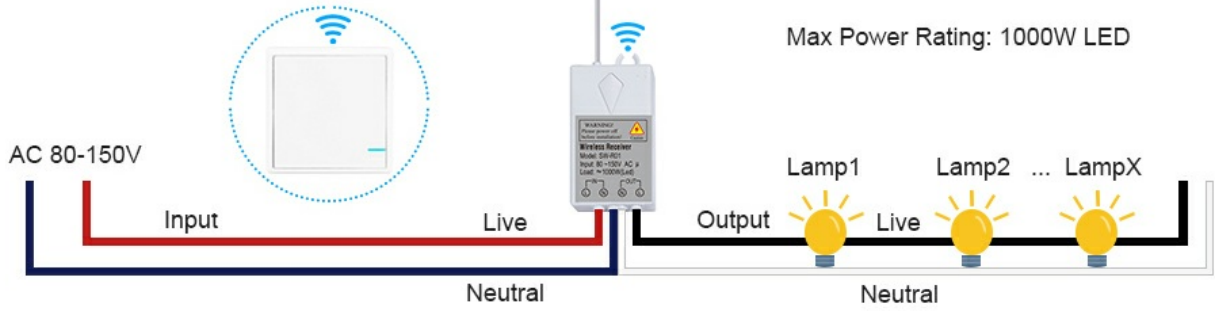
## 6. SPECIFICATIONS

---

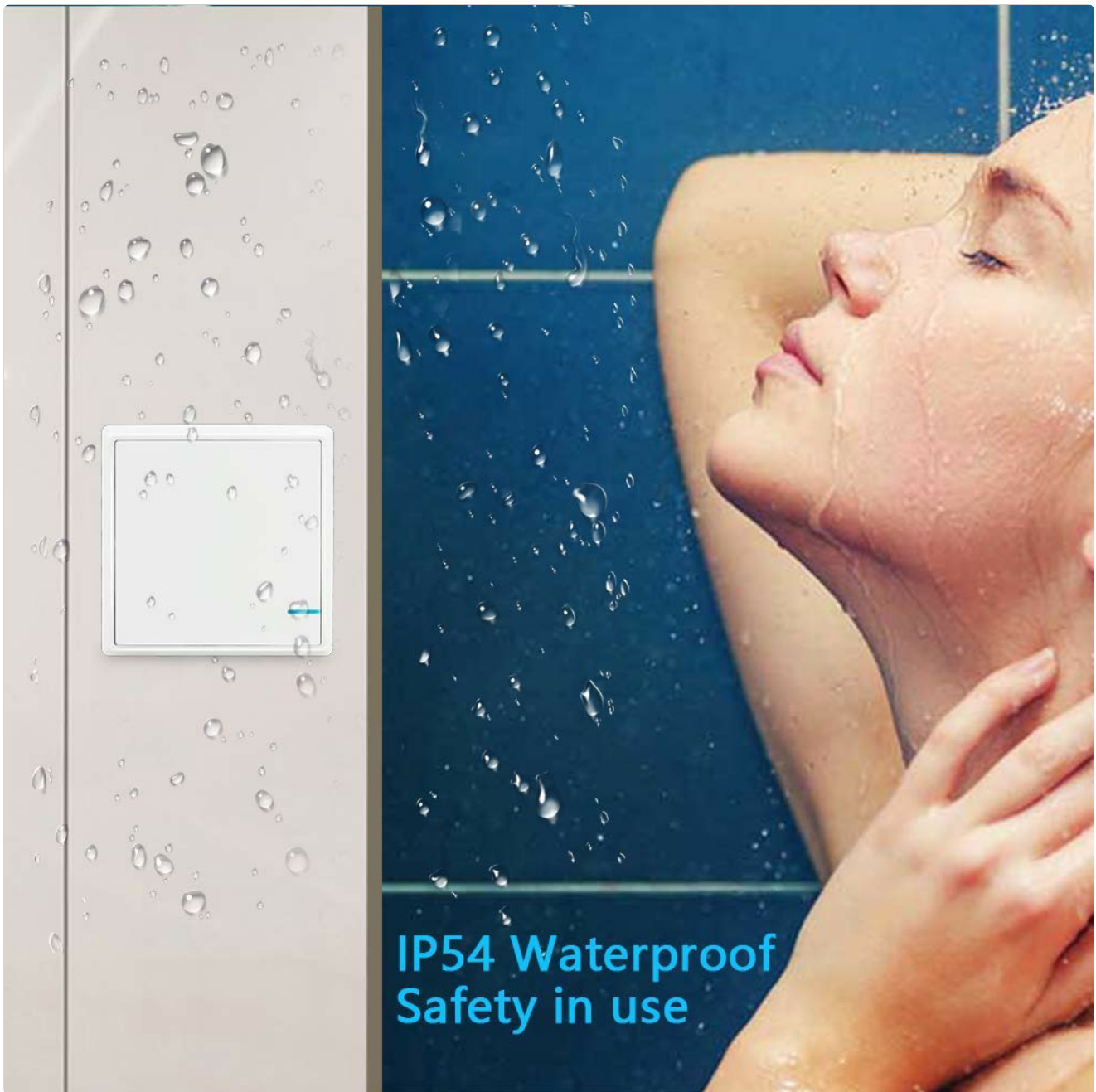
Feature	Specification
Brand	Thinkbee
Model	SwitchKit
Operation Mode	Off
Current Rating	10 Amps
Connector Type	Wireless
Switch Type	Push Button
Material	Acrylonitrile Butadiene Styrene
Item Dimensions (L x W x H)	3.93 x 3.93 x 0.47 inches
Mounting Type	Panel Mount
International Protection Rating	IP66
Specification Met	CE, FCC, RoHS
Control Method	Remote
Connectivity Protocol	X-10
Included Components	1*Wireless Switch, 1*Mini Receiver, 2*Adhesive Rubbers
Max. Integrated Power	1000W
Working Temperature	-25°C ~ +75°C



**One Switch Controls a Group of Lights**



**Image 6: Thinkbee Wireless Switch Features.** This image highlights key features such as the self-powered design, IP66 waterproof rating, long lifespan, and wide operating temperature range. It also mentions the ability to control multiple lights with one switch and the ease of installation without wiring.



**Image 7: IP66 Waterproof Rating.** This image visually confirms the IP66 waterproof rating of the wireless switch, showing it in a damp environment, ensuring safe usage even in places like bathrooms or outdoors.

## 7. WARRANTY AND SUPPORT

---

The Thinkbee Wireless Light Switch and Receiver Kit is CE, FCC, RoHS, and CQC Certified, ensuring high quality and safety standards. It comes with a no-hassle 36-month warranty. For any inquiries or assistance, friendly 24-hour customer service is available.