

Dorman 911-393

Dorman 911-393 Vapor Canister Purge Valve User Manual

Brand: Dorman | Model: 911-393

1. PRODUCT OVERVIEW

The Dorman 911-393 Vapor Canister Purge Valve is a direct replacement component designed to restore proper function to your vehicle's evaporative emissions (EVAP) system. This valve plays a critical role in managing fuel vapors, preventing their release into the atmosphere, and ensuring compliance with government emissions requirements. It is engineered for a precise fit and plug-and-play installation, matching the original equipment part.

2. PRODUCT FEATURES

- **Direct Replacement:** This vapor canister purge valve is designed to fit and function identically to the original equipment, ensuring seamless integration and proper operation of your vehicle's evaporative emissions system.
- **Quality Construction:** Manufactured from premium materials, this valve is built for durability and a long service life, resisting common wear and environmental factors.
- **Quality Tested:** The product has undergone rigorous testing on vehicles and in laboratory settings to ensure proper fit, performance, and reliability.

3. WHAT'S IN THE BOX

- 1 Vapor Canister Purge Valve
- Mounting Bracket

4. SPECIFICATIONS

Brand	Dorman
Model	911-393 Vapor Canister Purge Valve

Item Model Number	911-393
Manufacturer Part Number	911-393
OEM Part Number	CP607; CP697; 16102AA400; 16102AA490
Item Weight	4.8 ounces
Product Dimensions	4 x 3 x 2.8 inches
Exterior Finish	Machined
Inlet Connection Type	Flare
Outlet Connection Type	Flare
Number of Ports	2
Specification Met	EPA, ULC, ASTM, NSF, RoHS, ANSI, CE, ASSE
UPC	889245299550

5. VEHICLE COMPATIBILITY

This Dorman 911-393 Vapor Canister Purge Valve is compatible with the following Subaru models and model years:

- Subaru Baja: 2004, 2005, 2006
- Subaru Forester: 2005, 2006, 2007, 2008
- Subaru Impreza: 2005, 2006, 2007
- Subaru Legacy: 2005, 2006, 2007, 2008, 2009
- Subaru Outback: 2005, 2006, 2007, 2008, 2009

Note: Always verify fitment using your vehicle's specific year, make, and model with a reliable fitment tool or your vehicle's service manual.

6. INSTALLATION

Installation of the vapor canister purge valve typically involves replacing the existing unit. Due to the complexity of automotive systems and the importance of proper emissions control, professional installation by a qualified technician is recommended. Refer to your vehicle's specific service manual for detailed, step-by-step instructions and safety precautions.

General Installation Considerations:

- Ensure the vehicle's engine is cool and disconnected from the battery before beginning work.
- Locate the existing vapor canister purge valve. Its position can vary by vehicle model.
- Carefully disconnect electrical connectors and vacuum hoses. Hoses may be stiff or stuck; use appropriate tools to avoid damage to surrounding components.
- Remove mounting bolts or clips securing the old valve.
- Install the new Dorman 911-393 valve, ensuring all connections are secure and hoses are properly attached.
- Reconnect the battery and perform a system check.

7. OPERATION

The vapor canister purge valve is an electronically controlled valve that opens and closes to allow fuel vapors stored in the charcoal canister to be drawn into the engine's intake manifold for combustion. This process prevents harmful fuel vapors from escaping into the atmosphere. The vehicle's engine control unit (ECU) monitors various sensors to determine the optimal time and duration for the purge valve to open, typically during specific engine operating conditions (e.g., after the engine has warmed up and during cruising speeds).

8. MAINTENANCE

The Dorman 911-393 Vapor Canister Purge Valve is designed for long-term reliability. Regular maintenance of the EVAP system typically involves ensuring all hoses and connections are free from cracks, leaks, or blockages. While the purge valve itself is not a routinely serviceable item, its proper function is integral to the overall health of the emissions system. Adhere to your vehicle manufacturer's recommended maintenance schedule for all emissions-related components.

9. TROUBLESHOOTING

A malfunctioning vapor canister purge valve can lead to several issues. Common symptoms include:

- **Check Engine Light Illumination:** This is often the first indicator, with diagnostic trouble codes (DTCs) related to the EVAP system.
- **Difficulty Starting After Refueling:** If the valve is stuck open, excess fuel vapors can flood the engine, making it hard to start immediately after filling the fuel tank.
- **Rough Idling or Stalling:** An improperly functioning valve can disrupt the air-fuel mixture, leading to unstable engine operation.
- **Reduced Fuel Economy:** While less common, an EVAP system issue can indirectly affect fuel efficiency.

If you experience any of these symptoms, it is recommended to have your vehicle diagnosed by a qualified automotive technician. They can use specialized diagnostic tools to confirm if the purge valve is the cause of the problem.

10. VISUAL AIDS



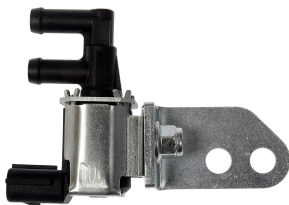
Main view of the Dorman 911-393 Vapor Canister Purge Valve, showing its primary components and connectors.



Side view of the valve, highlighting the electrical connector and hose ports.



Another side view, showing the integrated mounting bracket for secure installation.



Angled view of the purge valve, providing a comprehensive look at its design.

Product Videos

Dorman Canister Purge Valve Overview

This video provides an overview of Dorman's canister purge valves, explaining their function and importance in the evaporative emissions system. It highlights the quality and testing processes for Dorman replacement parts.

Explore Dorman's Vapor Canister Purge Valve Offering

A video showcasing Dorman's range of vapor canister purge valves and related fuel emissions components. It emphasizes durability against environmental factors and real-world testing.

SMMS Vapor Canister Purge Valve Solenoid for Subaru

This video demonstrates a vapor canister purge valve solenoid, similar in function to the Dorman 911-393, for Subaru vehicles. It provides a visual representation of the component.

K5T48478 Vapor Canister Purge Solenoid Valve

A video showcasing a K5T48478 vapor canister purge solenoid valve, offering a visual reference for the component's appearance and design.

16102AA490 Vapor Canister Purge Valve Solenoid

This video presents a 16102AA490 vapor canister purge valve solenoid, which is an OEM part number cross-referenced with the Dorman 911-393, providing a visual aid for the component.

Vapor Canister Purge Solenoid ZQGJHF-04K0-AA070 for Subaru

A video displaying a ZQGJHF-04K0-AA070 vapor canister purge solenoid, offering a visual reference for a similar component used in Subaru vehicles.

11. WARRANTY AND SUPPORT

For information regarding product warranty, returns, or technical support, please refer to the official Dorman Products website or contact their customer service directly. Keep your purchase receipt for any warranty claims.