

BIOBUDDI BB-0131

BIOBUDDI City Hospital Building Block Set BB-0131 Instruction Manual

Model: BB-0131 | Brand: BIOBUDDI

1. INTRODUCTION

The BIOBUDDI City Hospital Building Block Set BB-0131 offers an engaging construction experience for young users. This set allows for the creation of a hospital environment, complete with an ambulance, using 37 plant-based building blocks. BIOBUDDI blocks are designed to be ecological, recyclable, and sustainable, manufactured from sugarcane plant remnants. They are also compatible with other major building block brands, promoting extended play possibilities.

This manual provides essential information for the proper assembly, use, and maintenance of your BIOBUDDI City Hospital set, ensuring a safe and enjoyable experience.

2. SAFETY INFORMATION

Please read and adhere to the following safety guidelines:

- **Age Recommendation:** Not suitable for children under 3 years of age due to small parts that may present a choking hazard.
- **Adult Supervision:** For use only under adult supervision.
- **Material Safety:** BIOBUDDI blocks are made from plant-based materials. While non-toxic, they are not intended for consumption.
- **Inspection:** Regularly inspect all pieces for damage. Discard any broken or cracked blocks to prevent injury.

3. SETUP AND ASSEMBLY

The BIOBUDDI City Hospital set includes 37 pieces designed for straightforward assembly. Follow these steps to construct your hospital and ambulance:

1. **Unpack Components:** Carefully remove all blocks, punch-out cards, and the background board from the packaging.
2. **Identify Pieces:** Sort the blocks by size and color to facilitate assembly. Identify the larger base plates for the main structures.

3. **Assemble Hospital Building:** Begin by constructing the main hospital building. Refer to the visual guide below for block placement and structural details.
4. **Construct Ambulance:** Assemble the ambulance vehicle using the designated blocks and wheels.
5. **Integrate Play Elements:** Punch out the character cards (nurse, doctor, patients) and other decorative elements. Place them around the assembled hospital and ambulance to create a vibrant play scene. The background board can be used as a backdrop for the hospital.

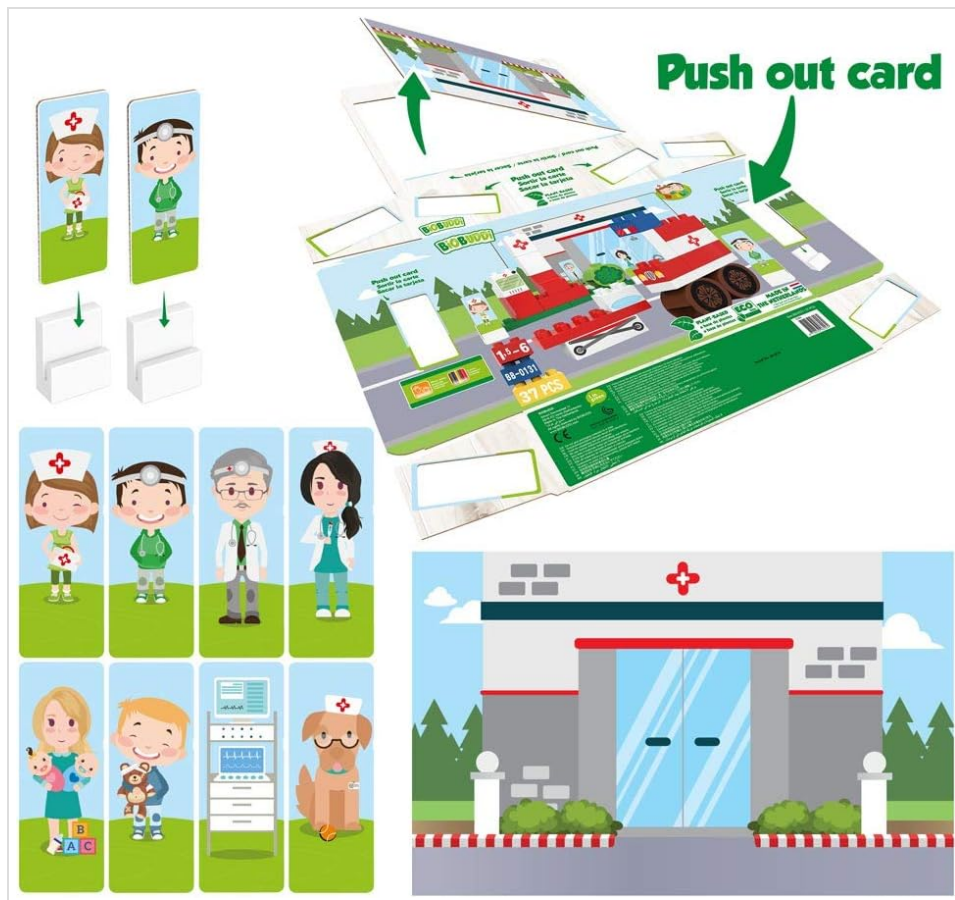


Image: Various components of the BIOBUDDI City Hospital set, including character punch-out cards, a hospital background, and individual building blocks, ready for assembly.



Image: The fully assembled BIOBUDDI City Hospital set, showcasing the hospital building, ambulance, and character figures in a complete play scene.

4. OPERATING AND PLAY

Once assembled, the BIOBUDDI City Hospital set provides an interactive and imaginative play environment. Users can engage in various role-playing scenarios involving hospital staff, patients, and emergency services with the ambulance. The set is designed to encourage concentration, enhance dexterity, and develop spatial reasoning skills through creative play.

The blocks are compatible with other BIOBUDDI sets and similar building block systems, allowing for expansion and integration into larger play worlds.

5. MAINTENANCE

To ensure the longevity and hygiene of your BIOBUDDI building blocks, follow these maintenance guidelines:

- **Cleaning:** Wipe blocks with a damp cloth and mild, non-abrasive soap if necessary. Rinse thoroughly and air dry. Avoid harsh chemicals or abrasive cleaners.
- **Storage:** Store blocks in a clean, dry place away from direct sunlight or extreme temperatures to prevent discoloration, warping, or material degradation.
- **Inspection:** Periodically check all blocks for any signs of wear, damage, or sharp edges. Discard any broken or severely damaged pieces to prevent potential hazards.

6. TROUBLESHOOTING

This section addresses common issues you might encounter with your BIOBUDDI City Hospital set:

- **Missing Pieces:** If you discover any pieces are missing upon opening the set, please contact BIOBUDDI customer support for assistance.
- **Difficulty Connecting Blocks:** Ensure that the blocks are correctly aligned before applying pressure. Apply gentle, even pressure to connect them. If blocks are consistently difficult to connect, check for any deformities or debris in the studs or holes.
- **Damaged Blocks:** Do not attempt to use damaged blocks. Contact customer support for information on replacements.

7. SPECIFICATIONS

Detailed product specifications for the BIOBUDDI City Hospital Building Block Set BB-0131:

Specification	Detail
Product Dimensions	33 x 24 x 8 cm
Product Weight	520 grams
Manufacturer Recommended Age	18 months - 6 years
Model Number	BB-0131
Educational Objectives	Concentration, Dexterity, Spatial Reasoning
Number of Players	1
Number of Pieces	37
Assembly	Assembly is part of the play experience.
Batteries Required	No
Batteries Included	No
Material Type	PE. Biobased (sugarcane-based)
Material Composition	Natural-based additives
Remote Control Included	No
Color	Multicolored
First Available Date	March 20, 2019

8. WARRANTY AND SUPPORT

For product support, inquiries, or to report missing or damaged parts, please contact BIOBUDDI customer service. Refer to the product packaging or the official BIOBUDDI website for the most current contact details and warranty information applicable to your region.



Image: The BIOBUDDI City Hospital set packaging, displaying key product information and the assembled toy.