

## CISA 16046103044

# CISA Serie 604 Door Closer Instruction Manual

Model: 16046103044

## INTRODUCTION

---

The CISA Serie 604 door closer is designed to provide effective and reliable control over door closing. This model features adjustable closing force (EN 2-4), making it suitable for doors weighing up to 85 kg and with a width of up to 1100 mm. It offers independent adjustments for closing speed and final latching speed, along with an adjustable hold-open function. Its compact design allows for quick installation on both right and left-hand doors, for push or pull side applications.

## SAFETY INFORMATION

---

- Read all instructions carefully before installation and use.
- Ensure all mounting screws are securely tightened to prevent injury or damage.
- Do not attempt to disassemble the main body of the door closer, as it contains pressurized components.
- Keep hands and fingers clear of moving parts during operation and adjustment.
- Adjustments should only be made by qualified personnel or by carefully following the instructions.

## PACKAGE CONTENTS

---

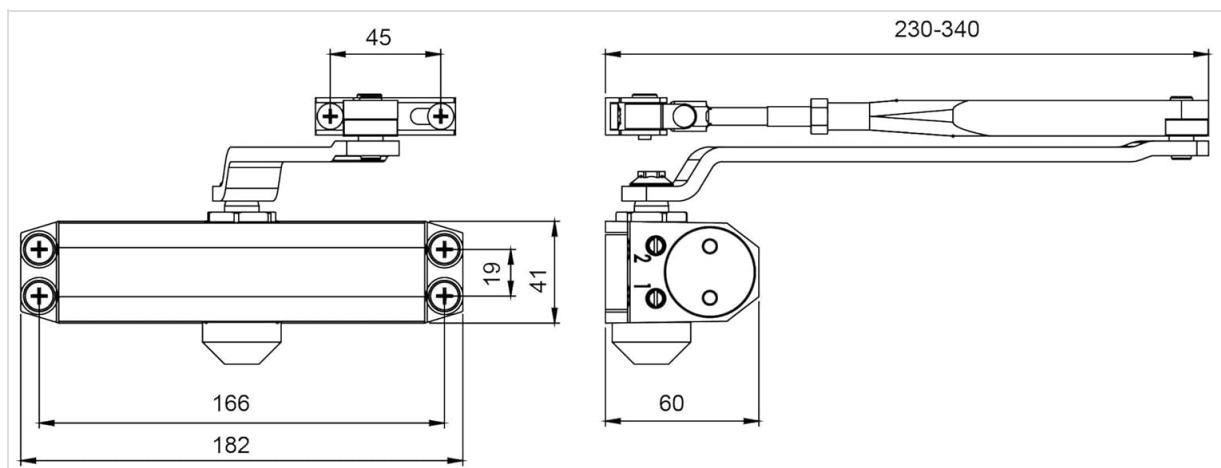
Verify that all components are present before beginning installation:

- CISA Serie 604 Door Closer Unit
- Articulated Arm Assembly
- Fixing Screws
- Mounting Template
- Detailed Instructions (this manual)

## SETUP AND INSTALLATION

The CISA Serie 604 door closer is designed for surface mounting and can be installed on either the push or pull side of right or left-hand doors. Use the provided mounting template for accurate hole placement.

1. **Determine Mounting Position:** Decide whether to mount the closer on the push side (hinge side) or pull side (opposite hinge side) of the door, and whether it's a right or left-hand door. Refer to the mounting template for specific hole patterns for each configuration.
2. **Prepare Mounting Surface:** Place the mounting template on the door and/or door frame at the desired height. Mark the drilling points for the closer body and the arm bracket.
3. **Drill Pilot Holes:** Drill pilot holes at the marked positions. Ensure the drill bit size is appropriate for the provided fixing screws.
4. **Mount Closer Body:** Secure the main door closer body to the door or frame using the fixing screws. Ensure it is level and firmly attached.
5. **Assemble and Attach Arm:** Assemble the articulated arm components. Attach the main arm to the closer's spindle and the arm bracket to the door frame or door, depending on the mounting configuration. Ensure the arm is correctly oriented and secured.
6. **Initial Adjustment:** After mounting, perform an initial check of the door's closing action. Fine-tune the closing speed and latching speed as described in the 'Operating Instructions' section.



**Figure 1:** Technical drawing of the CISA Serie 604 door closer with key dimensions in millimeters. This detailed technical drawing provides top and side views of the door closer, including critical dimensions for installation such as mounting hole spacing (166mm, 182mm), body width (41mm), and arm length (230-340mm). These measurements are essential for accurate mounting.

## OPERATING INSTRUCTIONS AND ADJUSTMENTS

The CISA Serie 604 door closer offers independent adjustments for closing speed, final latching speed, and a hold-open function to customize door operation.

### Adjusting Closing Speed (Valve 1)

This adjustment controls the speed of the door from its fully open position down to approximately 15 degrees from the closed position. Turn the corresponding valve (often marked 'F1' or '1') with a screwdriver:

- **Clockwise:** Decreases closing speed (slower).
- **Counter-clockwise:** Increases closing speed (faster).

### Adjusting Final Latching Speed (Valve 2)

This adjustment controls the speed of the door for the final 15 degrees of closing, ensuring the door latches securely without slamming. Turn the corresponding valve (often marked 'F2' or '2') with a screwdriver:

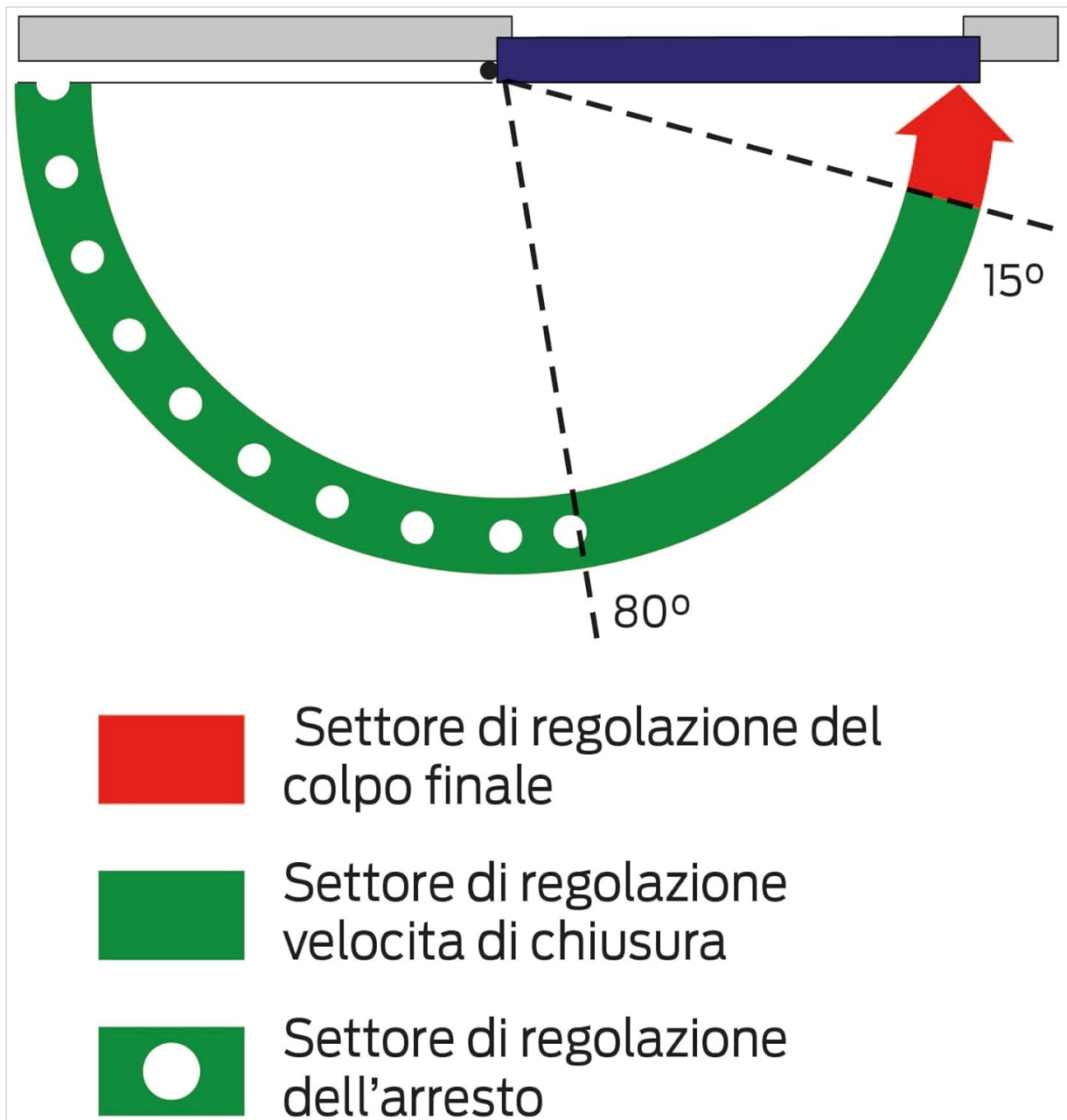
- **Clockwise:** Decreases latching speed (slower, softer close).
- **Counter-clockwise:** Increases latching speed (faster, firmer latch).

## Adjusting Hold-Open Function

The hold-open function allows the door to remain open at a specific angle. This is typically adjusted by a mechanism on the arm itself, often a friction shoe or a ball-detent system. Consult the specific arm assembly for detailed instructions on engaging and disengaging the hold-open feature and adjusting its tension.



**Figure 2:** Close-up view of the CISA Serie 604 door closer's adjustment valves. This image shows the two adjustment valves on the side of the door closer body. These valves control the closing speed and the final latching speed.



**Figure 3:** Diagram illustrating the adjustment sectors for closing speed, final latching, and hold-open on the CISA Serie 604 door closer. This diagram visually represents the angular ranges for adjusting the door closer. The red sector (15 degrees) indicates the final latching speed adjustment, the green sector (up to 80 degrees) shows the main closing speed adjustment, and the white dot represents the hold-open adjustment point.

## MAINTENANCE

Regular maintenance ensures the longevity and optimal performance of your CISA Serie 604 door closer.

- **Cleaning:** Periodically wipe the door closer body and arm with a soft, damp cloth to remove dust and grime. Avoid abrasive cleaners or solvents.
- **Check Fasteners:** Annually, inspect all mounting screws and arm connections to ensure they remain tight. Re-tighten if necessary.
- **Lubrication:** The internal mechanism is factory-lubricated and sealed. No additional lubrication is required. Do not attempt to lubricate the internal components.
- **Functionality Check:** Regularly observe the door's closing action. If the speed or latching force changes unexpectedly, refer to the 'Operating Instructions' for re-adjustment or the 'Troubleshooting' section for common issues.

## TROUBLESHOOTING

---

Here are solutions to common issues you might encounter with your door closer.

Problem	Possible Cause	Solution
Door closes too fast/slow	Adjustment valves are incorrectly set.	Adjust Valve 1 (closing speed) and Valve 2 (latching speed) as described in 'Operating Instructions'.
Door does not latch properly	Final latching speed (Valve 2) is too slow or arm assembly is misaligned.	Increase final latching speed using Valve 2. Check arm alignment and ensure all screws are tight.
Door does not close fully	Hold-open function engaged, or obstruction, or insufficient closing force.	Disengage hold-open if active. Remove any obstructions. Ensure the door closer is rated for the door's weight and width.
Oil leakage from closer body	Internal seal failure.	This indicates a defect. The unit cannot be repaired and must be replaced. Contact CISA support.

## SPECIFICATIONS

---

<b>Brand</b>	CISA
<b>Model</b>	Serie 604 (16046103044)
<b>Color</b>	Black
<b>External Finish</b>	Black
<b>Product Dimensions (L x W x H)</b>	18L x 4I x 6H cm
<b>Installation Type</b>	Surface Mounted
<b>Closing Force</b>	Adjustable EN 2-4
<b>Max Door Weight</b>	85 kg
<b>Max Door Width</b>	1100 mm
<b>Included Components</b>	Fixing screws, mounting template

## WARRANTY INFORMATION

---

Specific warranty details for the CISA Serie 604 door closer are not provided in the product information. Please refer to the official CISA website or contact your point of purchase for detailed warranty terms and conditions.

## SUPPORT

---

For further assistance, technical support, or to inquire about replacement parts, please visit the official CISA

website or contact their customer service department. Contact information can typically be found on the manufacturer's website or on the product packaging.