

## iClever WM101

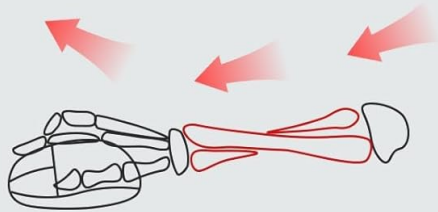
# iClever WM101 Ergonomic Vertical Wireless Mouse Instruction Manual

## 1. INTRODUCTION

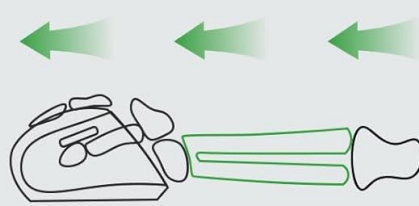
The iClever WM101 Ergonomic Vertical Wireless Mouse is designed to provide a comfortable and efficient computing experience. Its unique vertical design promotes a natural hand position, reducing strain and discomfort during extended use. This manual provides comprehensive instructions for setting up, operating, and maintaining your mouse.

# ERGONOMIC VERTICAL DESIGN

with Natural Grip



Traditional Mouse



Ergonomic Mouse

Figure 1: The ergonomic design of the iClever WM101 mouse promotes a natural hand and wrist posture, minimizing strain compared to traditional flat mice.



Figure 2: The WM101 mouse offers wireless plug-and-play functionality via a 2.4GHz USB receiver, ensuring a clutter-free workspace.

Video 1: Official iClever product video demonstrating the ergonomic design, adjustable DPI settings, and button functions of the WM101 Vertical Wireless Mouse, including how to access the USB receiver and battery compartment.

## 2. FEATURES

- **Ergonomic Design:** The mouse is sculpted to promote a natural hand position, reducing strain and discomfort during prolonged use.
- **Wireless Plug-and-Play:** Enjoy a clutter-free workspace with a simple USB receiver connection, requiring no software or drivers.
- **4 Adjustable DPI Levels:** Customize cursor sensitivity with settings of 1000, 1600, 2000, and 2400 DPI for precision or speed.
- **Easy Access Buttons:** Side buttons provide convenient back-and-forward navigation for enhanced productivity (Note: Not suitable for Mac or iOS systems).
- **Silent Click:** Designed with silent buttons for a quieter clicking experience, ideal for shared or quiet environments.
- **Wide Compatibility:** Works seamlessly with desktops, laptops, and some tablets across various

operating systems.

## 4 ADJUSTABLE DPI

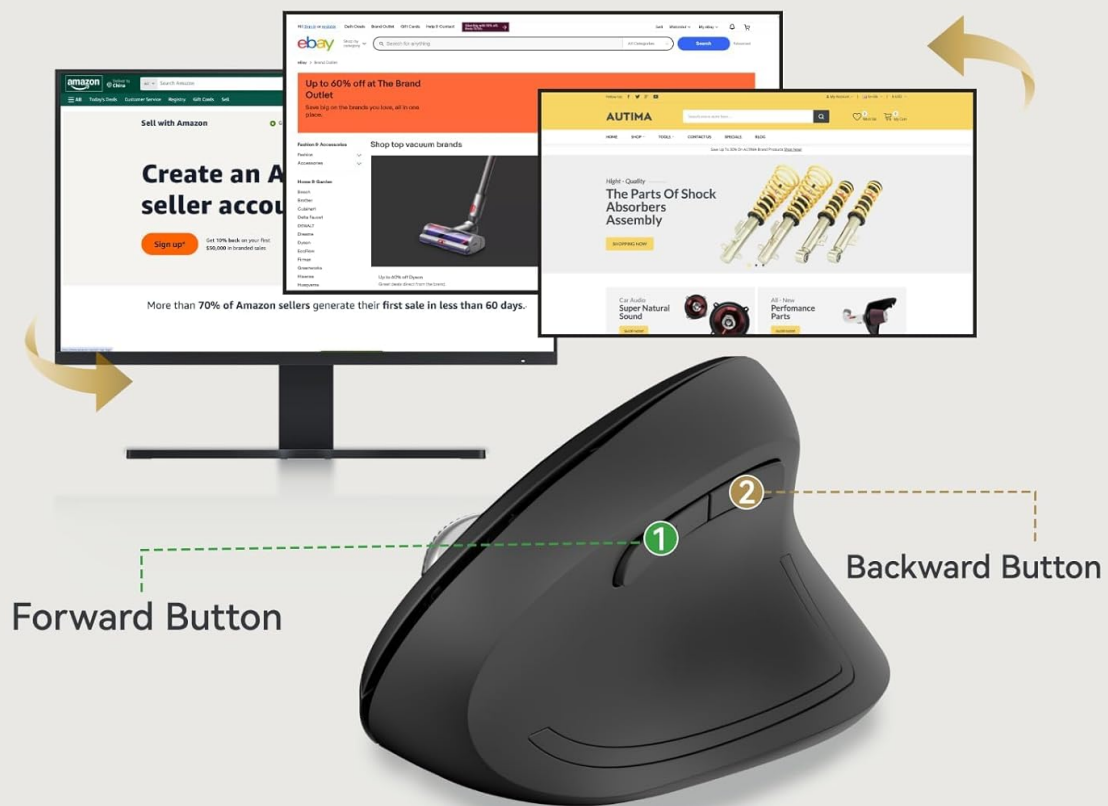
### with Enhanced Precision



Figure 3: The WM101 offers four adjustable DPI settings, allowing users to switch between different cursor speeds for various tasks.

# FORWARD & BACKWARD KEYS

with Easily Accessible Use



⚠ Next/Previous button is unavailable for Mac OS

Figure 4: Conveniently located side buttons enable quick forward and backward navigation, streamlining workflow.



Weight:125g

## DIMENSIONS

Figure 5: The silent click feature of the WM101 mouse ensures a quiet working environment, ideal for offices or libraries.

### 3. SETUP

#### 3.1 Installing Batteries

The iClever WM101 mouse requires two AAA batteries (not included). To install:

1. Locate the battery compartment on the underside of the mouse.
2. Open the battery compartment cover.
3. Insert two AAA batteries, ensuring correct polarity (+/-).
4. Close the battery compartment cover securely.





Figure 6: The battery compartment for two AAA batteries is located on the underside of the mouse.

### 3.2 Connecting the USB Receiver

The WM101 uses a 2.4GHz wireless USB-A nano receiver for connectivity. The receiver is stored conveniently inside the mouse.

1. Open the battery compartment cover and retrieve the USB receiver.
2. Plug the USB receiver into an available USB-A port on your computer (laptop, PC, desktop).
3. Turn on the mouse using the ON/OFF switch located on the underside.
4. Your computer should automatically detect the mouse, and it will be ready for use.



Figure 7: The mouse connects wirelessly to your computer via the included USB receiver.

## 4. OPERATING INSTRUCTIONS

### 4.1 Basic Usage

Hold the mouse with your hand in a natural, upright position. The left and right click buttons, as well as the scroll wheel, are positioned for easy access with your index and middle fingers.

### 4.2 Adjusting DPI

Press the DPI button located near the scroll wheel to cycle through the four sensitivity levels: 1000, 1600, 2000, and 2400 DPI. Select a DPI setting that suits your task, whether it's precise graphic design or fast-paced browsing.

## 4.3 Using Side Buttons

The two side buttons allow for quick forward and backward navigation in web browsers and file explorers. Please note that these side buttons are not supported on Mac or iOS systems.



Figure 8: The mouse provides high-precision scrolling and clicking for various applications.



Figure 9: Experience quiet operation with the WM101's silent click buttons.

## 5. MAINTENANCE

### 5.1 Battery Replacement

When the mouse's performance degrades or it stops responding, it may be time to replace the batteries. Follow the steps in Section 3.1 to replace the two AAA batteries.

### 5.2 Cleaning

To clean your mouse, gently wipe its surface with a soft, damp cloth. Avoid using harsh chemicals or abrasive materials that could damage the finish. Ensure no moisture enters the internal components.

## 6. TROUBLESHOOTING

- **Mouse not responding:** Ensure the USB receiver is securely plugged into your computer and the mouse is turned ON. Check if the batteries are correctly installed and have sufficient charge.
- **Intermittent connection:** Try plugging the USB receiver into a different USB port on your computer.



Ensure there are no significant obstructions or sources of interference between the mouse and the receiver.

- **Auto-sleep mode:** The mouse features an auto-sleep mode to conserve battery life. If the mouse becomes inactive for approximately 10 minutes, it will enter sleep mode. Simply click any button or move the mouse to wake it up.
- **Side buttons not working on Mac/iOS:** The forward/back side buttons are not supported on Mac or iOS operating systems. This is a design limitation.

## 7. SPECIFICATIONS

Feature	Specification
Model Number	WM101
Connectivity Technology	2.4 GHz RF wireless with USB-A nano receiver (10 m / 33 ft range)
Movement Detection Technology	Optical
Adjustable DPI Levels	1000 / 1600 / 2000 / 2400
Number of Buttons	6 (Left, Right, Scroll Wheel, DPI, Forward, Backward)
Special Features	Quiet clicks, Soft side grip, Auto-sleep Mode
Batteries Required	2 AAA batteries (not included)
Product Dimensions	4.88 x 3.31 x 0.1 inches
Item Weight	0.085 ounces

## 8. WARRANTY & SUPPORT

For warranty information or technical support, please refer to the documentation included with your product or visit the official iClever website. Keep your purchase receipt for warranty claims.