

SanA 3 Switches in 1 Gang

SANA Smart Light Switch User Manual

MODEL: 3 SWITCHES IN 1 GANG

WiFi Wall Light Switch with APP Control, Compatible with Alexa and Google Home



1. INTRODUCTION

The SanA Smart Light Switch is designed to provide wireless control of your home lighting using your existing Wi-Fi network. This device allows for remote control via a mobile application, voice commands through compatible smart assistants, and traditional manual operation. It integrates seamlessly into modern smart home ecosystems without requiring a separate hub.

Key functionalities include:

- Control lights from any location with internet access.
- Set schedules for lights to turn on or off automatically.
- Voice control compatibility with Amazon Alexa and Google Home.
- LED indicators for night navigation and status.



Image: Front view of the SanA Smart Light Switch, showing its three buttons and Wi-Fi indicator.

2. IMPORTANT SAFETY INFORMATION

WARNING: RISK OF ELECTRIC SHOCK.

- Installation must be performed by a qualified electrician or a person with thorough knowledge of electrical wiring.
- Always turn off power at the circuit breaker before installing or servicing the switch.
- Ensure the switch is rated for the load it will control.
- This device requires a neutral wire for proper operation. If your existing wiring does not include a neutral wire, consult a professional electrician.
- Do not install with wet hands or when standing on wet or damp surfaces.
- Use only indoors.

3. PACKAGE CONTENTS

Verify that all components are present in the package:

- 1x SanA Smart Wall Light Switch (3 Switches in 1 Gang)
- 1x User Manual (this document)
- 2x Screws for installation

4. PRODUCT SPECIFICATIONS

Technical Specifications

Feature	Detail
Type	Smart Wall Light Switch
Material	PC flame retardant polymer, Copper, Brass
Operating Voltage	AC 100V-240V / 50Hz~60Hz
Max Power (Resistance Load)	1100W/gang
Max Power (Capacitive Load)	400W/gang
Working Current	Max 10A
Working Humidity	<80%
Radio Protocol	WiFi 2.4GHz (5GHz not supported)
Standby Power Consumption	<0.1mA
Operating Environment Temperature	-20~45°C (-4~113°F)

Feature	Detail
Life Long	>100,000 times
Switch Dimension	5.04 x 3.31 x 0.91 inches (12.8 x 8.4 x 2.3 cm)
Circuit Type	3-way (Note: This switch is not a 3-way switch replacement, it controls 3 separate loads from one location)
Connector Type	Wireless
Actuator Type	Push Button

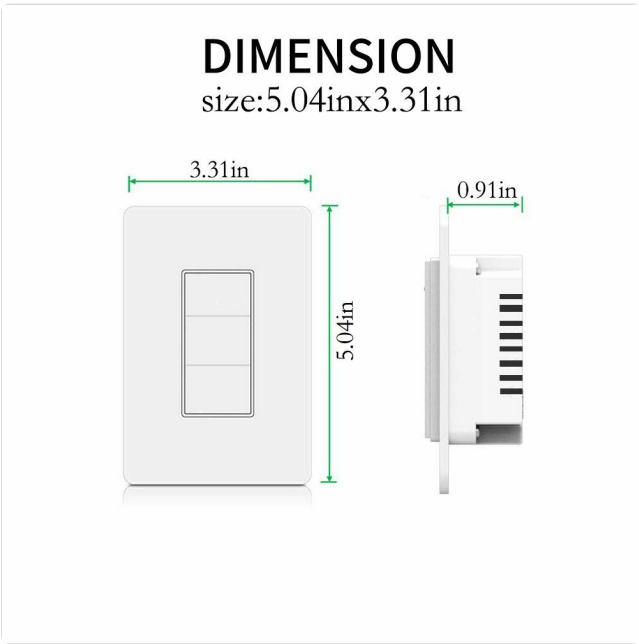


Image: Diagram showing the dimensions of the SanA Smart Light Switch: 5.04 inches height, 3.31 inches width, and 0.91 inches depth.

5. INSTALLATION GUIDE

5.1 Pre-installation Checklist

- **Neutral Wire Required:** This smart switch requires a neutral wire for operation. Confirm your electrical box has a neutral wire (usually white). If not, consult a qualified electrician.
- **Power Off:** Before starting, turn off the power to the switch location at the circuit breaker. Verify power is off using a voltage tester.
- **2.4GHz Wi-Fi Network:** Ensure your home Wi-Fi network is 2.4GHz. This switch does not support 5GHz Wi-Fi.

5.2 Wiring Instructions

1. Turn off power at the circuit breaker.
2. Remove the existing wall plate and switch from the wall box.
3. Identify the wires:
 - **Live Wire (L):** Usually black, carries power from the breaker.
 - **Neutral Wire (N):** Usually white, required for the smart switch.
 - **Load Wires (Load1, Load2, Load3):** Wires going to the light fixtures.
 - **Ground Wire (Optional):** Usually green or bare copper.

4. Connect the wires from the wall box to the corresponding terminals on the SanA Smart Light Switch using wire nuts (not included, but recommended for secure connections):
 - Connect the Live wire to the 'L' terminal.
 - Connect the Neutral wire to the 'N' terminal.
 - Connect Load1 to the 'Load1' terminal, Load2 to 'Load2', and Load3 to 'Load3'.
 - Connect the Ground wire (if present) to the 'Ground' terminal.
5. Carefully push the wired switch into the wall box.
6. Secure the switch to the wall box with the provided screws.
7. Attach the new wall plate.
8. Turn on power at the circuit breaker.

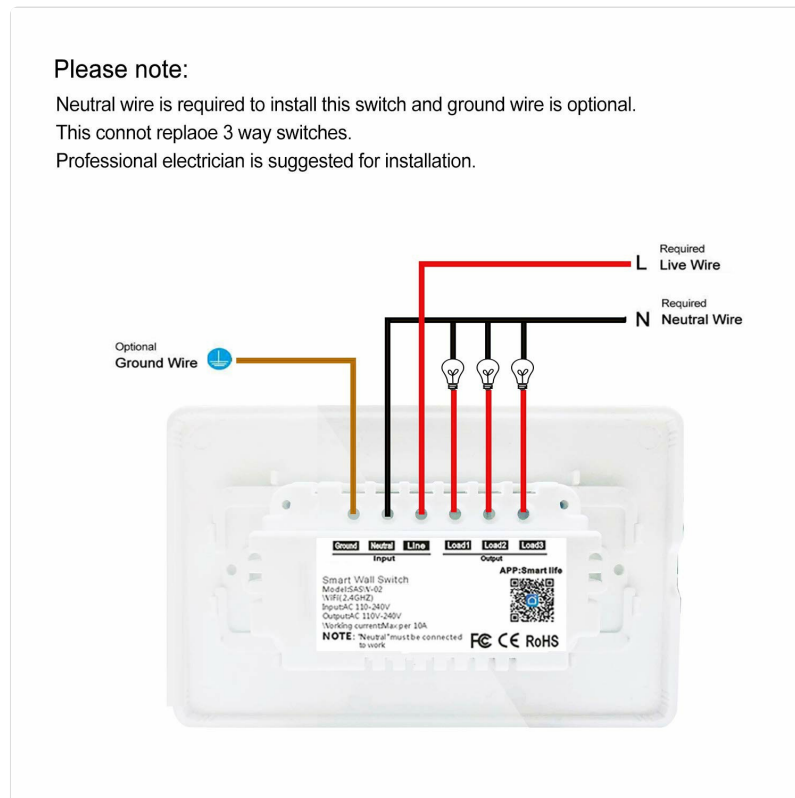


Image: Detailed wiring diagram showing connections for Live, Neutral, Ground (optional), and three Load wires to the smart switch terminals.

5.3 App Download and Pairing

1. **Download the App:** Search for "Smart Life" in the Apple App Store (for iOS) or Google Play Store (for Android) and download the application.
2. **Register/Login:** Open the Smart Life app and register for a new account or log in if you already have one.
3. **Add Device:**
 - Tap the "+" icon in the top right corner of the app to add a device.
 - Select "Electrical" then "Switch (Wi-Fi)" or "Wall Switch".
 - Follow the on-screen instructions to put the switch into pairing mode. This usually involves pressing and holding one of the switch buttons until the Wi-Fi indicator light blinks rapidly.
 - Enter your 2.4GHz Wi-Fi network name and password when prompted.
 - The app will then search for and connect to the switch. Once connected, you can rename the switch and individual gangs within the app.

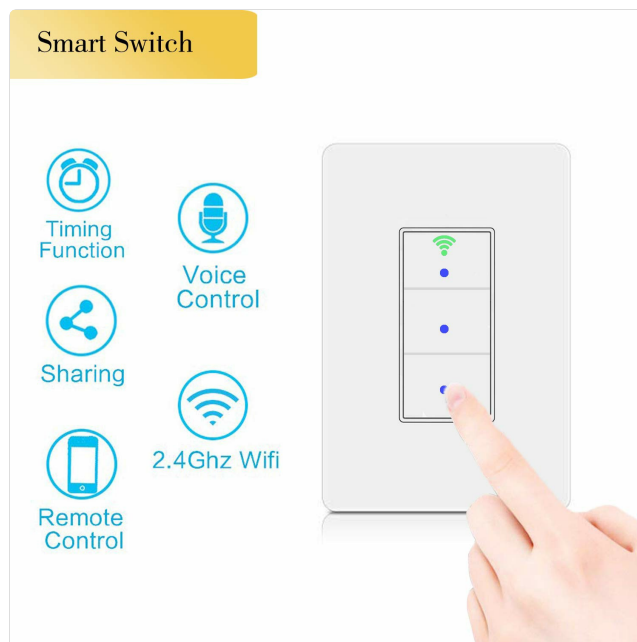


Image: Icons representing key features: Timing Function, Voice Control, Sharing, Remote Control, and 2.4GHz WiFi compatibility.

6. OPERATING INSTRUCTIONS

6.1 Manual Control

Each button on the switch functions as a traditional light switch. Press a button to toggle the connected light on or off.

The Wi-Fi indicator light on the switch will show its status:

- **Blue Light:** Indicates the switch is working and powered on.
- **Green Light:** Indicates the switch is successfully connected to your Wi-Fi network.



Image: Illustration showing the smart switch with blue dots indicating power on, and a green Wi-Fi icon indicating network connection.

6.2 App Control

Once paired, you can control your lights from the "Smart Life" app:

- Open the Smart Life app.

- Select your SanA Smart Light Switch from the device list.
- Tap on the individual switch icons within the app to turn lights on or off.
- You can also set up scenes, groups, and automations within the app for more advanced control.

6.3 Voice Control (Alexa & Google Home)

To enable voice control, link your Smart Life account to your Amazon Alexa or Google Home app:

1. Open the Alexa or Google Home app.
2. Navigate to the "Skills" (Alexa) or "Works with Google" (Google Home) section.
3. Search for "Smart Life" and enable the skill/service.
4. Log in with your Smart Life account credentials.
5. Once linked, discover devices (Alexa) or sync devices (Google Home).
6. You can now use voice commands like:
 - "Alexa, turn on living room light."
 - "Hey Google, turn off kitchen light."
 - "Alexa, set bedroom light to 50%." (If dimmable bulbs are used and supported by the switch/app)

6.4 Timer and Schedule Settings

The Smart Life app allows you to set schedules and timers for your lights:

- **Scheduling:** Set specific times for lights to turn on or off daily or on selected days of the week.
- **Countdown Timer:** Set a countdown for a light to turn off after a certain duration.



Image: Screenshot of the Smart Life app interface showing the timer function, allowing users to set schedules for lights to work automatically.

6.5 Device Sharing

You can share control of your smart switch with family members or other users through the Smart Life app. This allows multiple users to control the lights from their own devices.

7. MAINTENANCE

- **Cleaning:** To clean the switch, wipe it with a soft, dry cloth. Do not use abrasive cleaners or solvents. Ensure power is off before cleaning.
- **Firmware Updates:** Periodically check the Smart Life app for firmware updates for your switch. Updates can improve performance and add new features.
- **Network Stability:** Ensure your Wi-Fi network is stable and strong in the area where the switch is installed for optimal performance.

8. TROUBLESHOOTING

Common Issues and Solutions

Problem	Possible Cause / Solution
Switch not turning on/off manually.	<ul style="list-style-type: none"> • Check if the circuit breaker is tripped. • Verify wiring connections are secure. • Ensure power is supplied to the switch.
Cannot connect to Wi-Fi / App control not working.	<ul style="list-style-type: none"> • Ensure your Wi-Fi network is 2.4GHz (5GHz is not supported). • Check Wi-Fi signal strength at the switch location. • Make sure the switch is in pairing mode (blinking Wi-Fi indicator). • Restart your Wi-Fi router. • Try resetting the switch (refer to app instructions for reset procedure, usually holding a button for several seconds). • Ensure correct Wi-Fi password was entered in the app.
Voice control not responding.	<ul style="list-style-type: none"> • Verify that the Smart Life skill/service is enabled and linked in your Alexa/Google Home app. • Ensure the device name in the Smart Life app matches the name you are using for voice commands. • Check your internet connection.
Lights flicker or do not turn off completely.	<ul style="list-style-type: none"> • This can occur with certain LED bulbs. Ensure the bulbs are dimmable (if applicable) and compatible with smart switches. • The total wattage of connected lights might be too low or too high for the switch. Refer to specifications.
Switch feels warm.	<ul style="list-style-type: none"> • A slight warmth is normal during operation. • If it's excessively hot, immediately turn off power at the breaker and check wiring for loose connections or overloaded circuits. Consult an electrician if unsure.

9. WARRANTY AND SUPPORT

For any questions regarding installation, operation, or troubleshooting, please contact SanA customer support. Refer



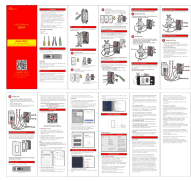
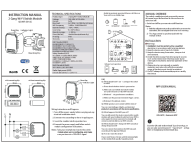


to the contact information provided on the product packaging or the seller's information on the purchase platform. This product comes with a standard manufacturer's warranty. Please retain your proof of purchase for warranty claims.

For further assistance, you may visit the SanA official website or contact their support team directly.



© 2025 SanA. All rights reserved.
This manual is subject to change without notice.

Related Documents - 3 Switches in 1 Gang

	<p>Sana Device: Instructions for Use and Safety Information</p> <p>Comprehensive guide to using the Sana device for enhanced rest and relaxation, including setup, operation, safety precautions, and technical specifications.</p>
	<p>Sana Wellness Device: Instructions for Use, Features, and Safety</p> <p>Comprehensive guide to the Sana wellness device, covering intended use, operating instructions, app connectivity, safety precautions, cleaning, storage, and technical specifications. Enhance rest and relaxation with audio-visual stimulation.</p>
	<p>Treatlife SS01 3-Way Smart Switch User Manual</p> <p>Comprehensive user manual for the Treatlife SS01 3-Way Smart Switch, detailing installation, setup, and troubleshooting for smart home integration with Alexa and Google Home.</p>
	<p>2 Gang Wi-Fi Switch Module QS-WIFI-S04-2C: Instruction Manual & Setup Guide</p> <p>Comprehensive instruction manual for the QS-WIFI-S04-2C 2 Gang Wi-Fi Switch Module. Learn about technical specifications, installation, wiring, manual override, and setup with the Tuya Smart App for smart home automation.</p>
	<p>Scolmore ClickSmart+ CSP041 & CSP042 Smart Switching Receiver Installation Guide</p> <p>Installation and user guide for the Scolmore ClickSmart+ CSP041 (1 Gang) and CSP042 (2 Gang) smart switching receivers. Covers product features, safety precautions, wiring, app pairing, and troubleshooting for smart home automation.</p>
	<p>HLH BioPharma Fachkompendium: Lactobact, Casa Sana, DentaSan Product Catalog</p> <p>Comprehensive product catalog from HLH BioPharma, featuring detailed information on the Lactobact, Casa Sana, and DentaSan product lines, including scientific references, indications, ingredients, and usage instructions.</p>

