

Teletек AVA

Teletек AVA Keypad User Manual

MODEL: AVA

Introduction

This manual provides comprehensive instructions for the installation, operation, and maintenance of your Teletек AVA Keypad. Please read this manual thoroughly before attempting to install or operate the device to ensure proper functionality and safety.

The Teletек AVA Keypad is designed for use with compatible alarm systems, offering a user-friendly interface for system control.

Setup and Installation

Before beginning installation, ensure all components are present and undamaged. The package typically includes the AVA Keypad, an AC-AC power adapter, and mounting hardware.



Figure 1: Teletek AVA Keypad, AC-AC adapter (Type AC9A2, Input: AC 220-230V 50Hz, Output: AC 9V / 0.2A), and mounting screws with wall plugs. These components are essential for the installation and power supply of the keypad.

1. Mounting the Keypad

1. Select a suitable indoor location for the keypad, away from direct sunlight, moisture, and extreme temperatures.
2. Use the provided mounting screws and wall plugs to securely attach the keypad to a wall. Ensure the keypad is level.
3. Route necessary wiring (e.g., communication bus) to the keypad's designated terminals. Refer to your alarm system's main control panel manual for specific wiring diagrams.

2. Power Connection

1. Connect the AC-AC adapter (Type AC9A2) to the keypad's power input port.
2. Plug the AC-AC adapter into a standard 220-230V AC 50Hz power outlet.
3. Verify that the keypad powers on and displays initial boot-up information.

Operating Instructions

The Teletek AVA Keypad provides an interface for controlling your alarm system. Specific functions and codes will depend on your alarm system's configuration.

Basic Functions:

- **Arming the System:** Enter your user code followed by the 'Arm' button (or equivalent).
- **Disarming the System:** Enter your user code followed by the 'Disarm' button (or equivalent).
- **Zone Status:** Press the 'Status' button to view the current status of different zones.
- **Panic/Emergency:** Specific buttons or key combinations may trigger panic, medical, or fire alarms. Refer to your system's programming for details.

For advanced programming and user code management, consult the main alarm system control panel manual.

Maintenance

Regular maintenance ensures the longevity and reliable operation of your Teletek AVA Keypad.

- **Cleaning:** Use a soft, dry cloth to clean the keypad surface. Avoid abrasive cleaners or solvents, which can damage the display and buttons.
- **Power Supply:** Ensure the AC-AC adapter is securely plugged into both the keypad and the wall outlet. Do not use unauthorized power adapters.
- **Environmental Conditions:** Keep the keypad away from excessive heat, cold, humidity, and direct water exposure.

Troubleshooting

If you encounter issues with your Teletek AVA Keypad, refer to the following common problems and solutions:

Problem	Possible Cause	Solution
Keypad does not power on.	No power supply; faulty adapter; loose connection.	Check power outlet; ensure adapter is correctly connected; test adapter if possible.
Keypad unresponsive.	System communication issue; keypad malfunction.	Verify communication wiring to the main panel; restart the alarm system (if safe to do so).
Incorrect code entry.	User code entered incorrectly; code not programmed.	Re-enter code carefully; confirm user code with system administrator.

If the problem persists, contact a qualified technician or your alarm system provider for assistance.

Specifications

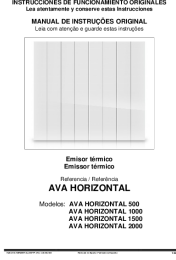


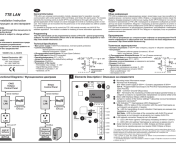

Feature	Detail
Brand	Teletek
Model Number	AVA
Item Weight	600 grams
Color	Black (Keypad housing is white, but display area is black as seen in image)
Power Input (Adapter)	AC 220-230V 50Hz
Power Output (Adapter)	AC 9V / 0.2A
Batteries Required	No
Batteries Included	No

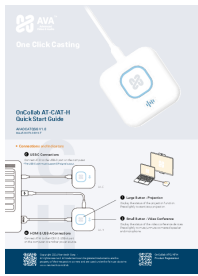
Warranty and Support

Information regarding specific warranty terms for the Teletek AVA Keypad is not provided in this document. Please refer to your purchase documentation or contact your retailer for warranty details.

For technical support or service, please contact the authorized Teletek distributor or your alarm system installer.

Related Documents - AVA

	<p>Manual de Usuario Calefactor Eléctrico AVA HORIZONTAL - Instrucciones y Funcionamiento</p> <p>Este manual proporciona las instrucciones originales de funcionamiento para la serie AVA HORIZONTAL de emisores térmicos. Incluye advertencias de seguridad, guía de instalación, operación detallada y consejos de mantenimiento para los modelos AVA HORIZONTAL 500, 1000, 1500 y 2000.</p>
	<p>AVA Innovations AG Product Information, Terms & Conditions, and Safety Guidelines</p> <p>This document provides important product information, terms and conditions of use, regulatory compliance details, and safety instructions for AVA products, including the AVA Nano Brain. It is available in multiple languages.</p>
	<p>Natron TD Wireless Addressable Fire Alarm Heat Detector - Installation and Technical Manual</p> <p>Detailed installation guide and technical specifications for the Teletek Natron TD wireless addressable fire alarm heat detector, covering features, mounting, enrollment, and maintenance.</p>
	<p>TTE LAN Communication Module Installation Instructions - Teletek Electronics</p> <p>Installation instructions and technical overview for the Teletek TTE LAN universal communication module. Learn about its features, connectivity with CA62, Eclipse, Simpo panels, and AJAX SP Pro integration for alarm systems and home automation.</p>
	<p>UNI-B Wireless Tattoo Pen Instruction Manual</p> <p>Comprehensive guide for the AVA UNI-B wireless tattoo pen, covering technical specifications, control functions, OLED screen operation, stroke and needle adjustments, and essential safety warnings for tattoo artists.</p>



[AVA OnCollab AT-C/AT-H Quick Start Guide](#)

Concise guide to setting up and using the AVA OnCollab AT-C/AT-H for one-click casting and video conferencing. Learn about connections, pairing, and LED indicators.