

Manuals+

[Q & A](#) | [Deep Search](#) | [Upload](#)

manuals.plus /

› [Corsair](#) /

› [Corsair K68 RGB Mechanical Gaming Keyboard User Manual](#)

Corsair CH-9102014-NA

Corsair K68 RGB Mechanical Gaming Keyboard User Manual

Model: CH-9102014-NA

INTRODUCTION

The Corsair K68 RGB Mechanical Gaming Keyboard is designed for performance and durability. It features per-key RGB backlighting, Cherry MX Speed mechanical key switches, and is rated for dust and spill resistance up to IP32. This manual provides instructions for setting up, operating, maintaining, and troubleshooting your keyboard.

PACKAGE CONTENTS

- Corsair K68 RGB Mechanical Gaming Keyboard
- Detachable Soft-Touch Palm Rest
- Quick Start Guide (this document)



Image: The Corsair K68 RGB Mechanical Gaming Keyboard shown alongside its retail packaging.

SETUP

System Requirements

- PC with a USB 2.0 port
- Windows operating system
- Internet connection for Corsair iCUE software download

Connecting the Keyboard

1. Locate an available USB 2.0 port on your computer.
2. Plug the USB connector from the Corsair K68 RGB keyboard into the USB port.
3. The keyboard will be automatically detected by your operating system.

Attaching the Palm Rest

Align the palm rest with the front edge of the keyboard. Gently push the palm rest towards the keyboard until it clicks into place. To remove, pull the palm rest away from the keyboard.

Software Installation (Corsair iCUE)

For full customization of RGB lighting, macro programming, and other advanced features, download and install the Corsair iCUE software from the official Corsair website. The software allows for sophisticated control over your keyboard's functions.

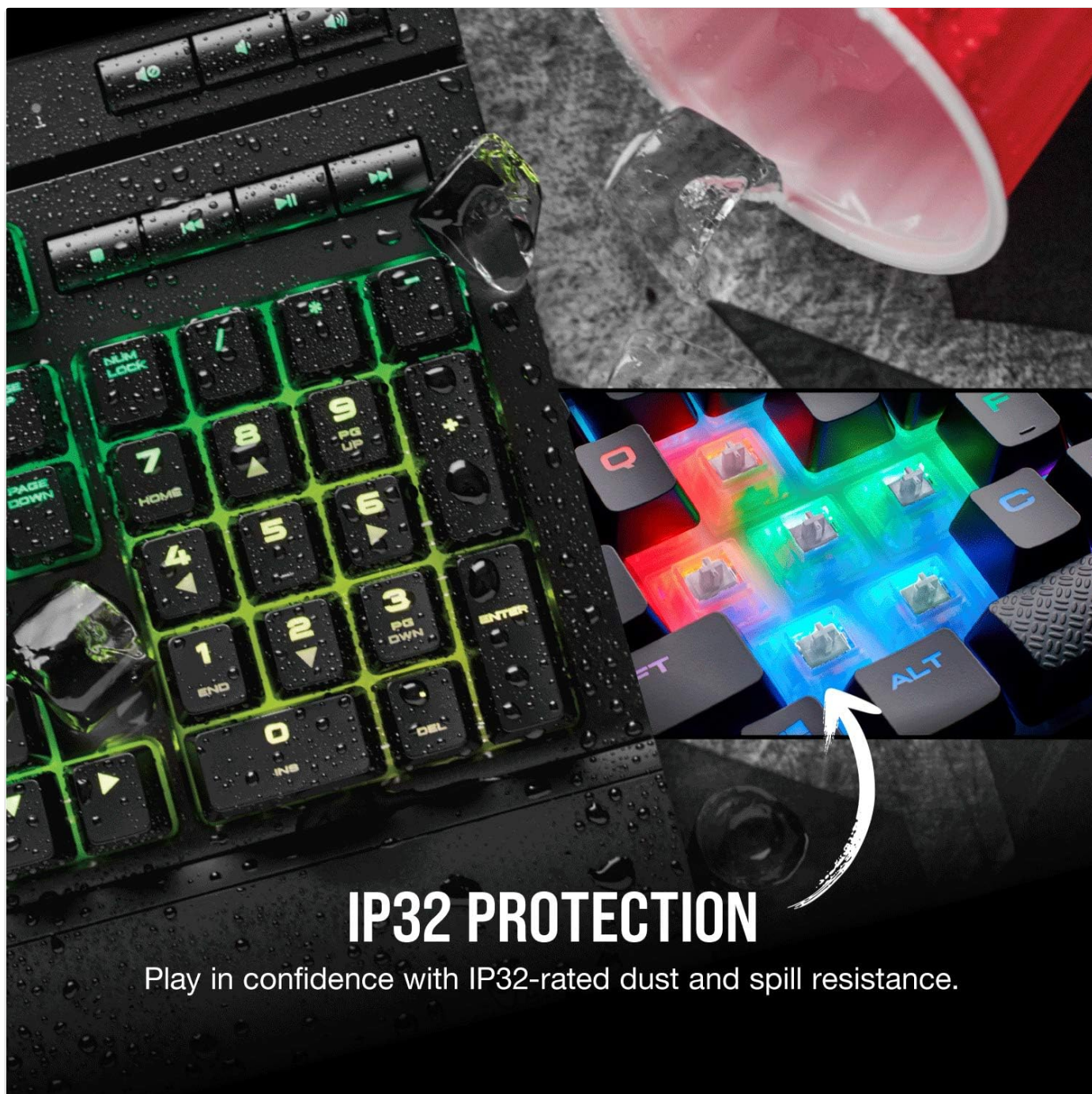
OPERATING THE KEYBOARD

Basic Functionality

The Corsair K68 RGB functions as a standard keyboard for typing and general computer use immediately after connection.

RGB Backlighting

The keyboard features vivid per-key RGB backlighting. You can customize lighting patterns and effects using the Corsair iCUE software. A variety of on-board effects are also available for instant illumination without software.



IP32 PROTECTION

Play in confidence with IP32-rated dust and spill resistance.

Image: A detailed view of the keyboard's keys highlighting the dynamic per-key RGB LED backlighting capabilities, along with the Corsair iCUE software logo.

Dedicated Multimedia Controls

The keyboard includes dedicated volume and multimedia controls located at the top right. These allow you to adjust audio settings (volume up/down, mute) and control media playback (play/pause, stop, track forward/backward) without interrupting your activity.

Windows Key Lock Mode

A dedicated Windows Key Lock button is provided to disable the Windows key during gaming sessions, preventing accidental interruptions.

Anti-Ghosting and N-Key Rollover (NKRO)

The K68 RGB features 100% anti-ghosting with full key rollover (NKRO). This ensures that all your commands and simultaneous keystrokes register accurately, regardless of how many keys are pressed at once.



Image: An annotated diagram of the Corsair K68 RGB keyboard, pointing out features such as the Windows Key Lock, dedicated multimedia controls, detachable palm rest, N-Key Rollover (NKRO), IP32 dust/spill resistance, and 100% anti-ghosting.

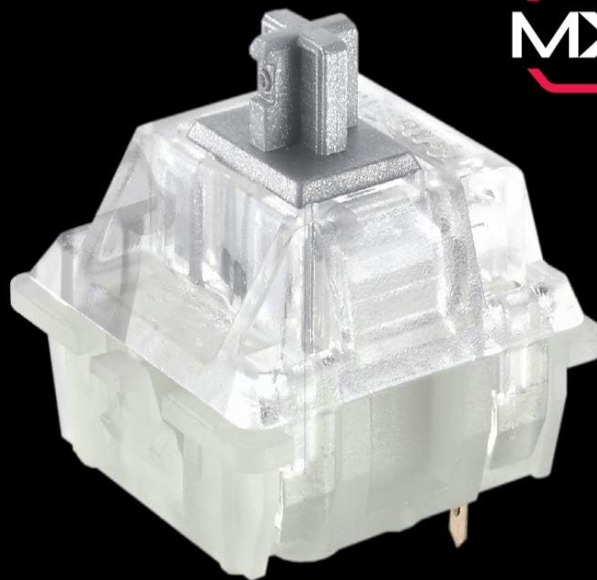
MAINTENANCE

Dust and Spill Resistance

The Corsair K68 RGB keyboard is designed with IP32 protection, offering resistance against dust and minor spills. This helps protect the internal components from damage due to everyday accidents.

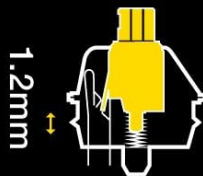
ULTRA-FAST ACTUATION

Reliable German-made CHERRY MX Speed RGB keyswitches deliver the fastest actuation at 1.2mm for competitive gaming.



1.2mm

Distance to Actuation



45g

Actuation Force

Image: A close-up of the keyboard with water droplets on its surface, demonstrating its IP32-rated dust and spill resistance.

Cleaning Instructions

- Disconnect the keyboard from your computer before cleaning.
- Use a soft, damp cloth to wipe down the surface of the keyboard.
- For dust and debris between keys, use compressed air.
- Avoid using harsh chemicals or abrasive materials, as these can damage the keyboard's finish or keycaps.

TROUBLESHOOTING

Keyboard Not Responding

- Ensure the USB cable is securely connected to both the keyboard and the computer.
- Try plugging the keyboard into a different USB port.
- Restart your computer.

- If using a USB hub, try connecting directly to the computer.

Lighting Issues

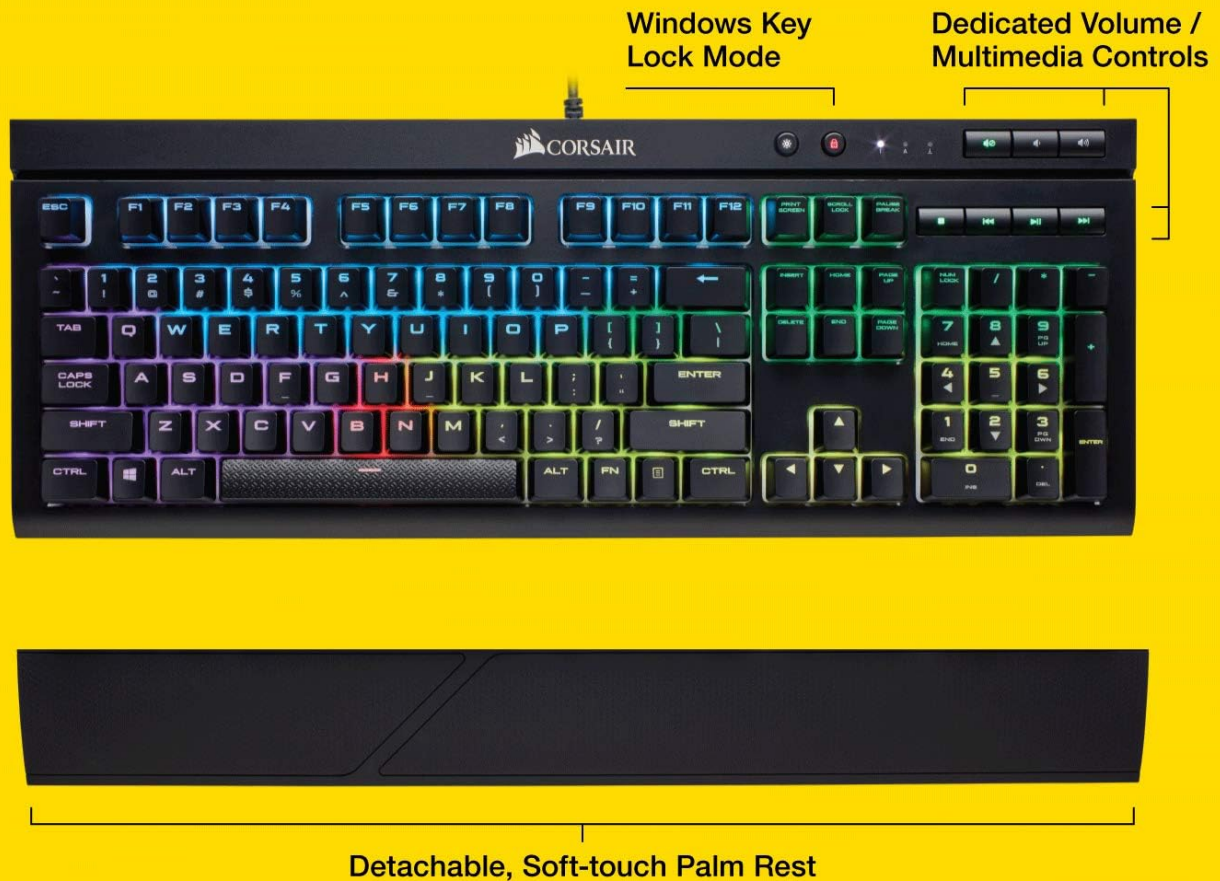
- Ensure the Corsair iCUE software is running and updated to the latest version.
- Check lighting profiles within iCUE to ensure they are correctly configured.
- Perform a soft reset of the keyboard (refer to Corsair support for specific instructions if needed).

Keys Not Registering Correctly

- Clean around the affected key with compressed air to remove any debris.
- Ensure the keycap is properly seated on the switch.
- If the issue persists, contact Corsair Technical Support.

SPECIFICATIONS

| Feature | Detail |
|--------------------|------------------------------------|
| Model Number | CH-9102014-NA |
| Key Switches | Cherry MX Speed Mechanical |
| Actuation Distance | 1.2mm |
| Actuation Force | 45g |
| Backlighting | Per-key RGB LED |
| Connectivity | Wired USB |
| Anti-Ghosting | 100% with Full Key Rollover (NKRO) |
| Durability | IP32 Dust and Spill Resistant |
| Dedicated Controls | Volume and Multimedia |
| Dimensions (LxWxH) | 17.9 x 6.7 x 1.6 inches (approx.) |
| Weight | 3.11 pounds (approx.) |
| Operating System | Windows |



NKRO

Full Key Rollover

IP32

Dust/Spill Resistant

100%

Anti-ghosting

Image: A detailed view of a Cherry MX Speed mechanical key switch, illustrating its 1.2mm actuation distance and 45g actuation force.

WARRANTY AND SUPPORT

For warranty information, please refer to the warranty card included with your product or visit the official Corsair website. For technical assistance, you may contact Corsair Technical Support at **1-888-222-4346 opt #1**.