



Manuals.plus /

› PartsForLess /

› PartsForLess WR55X10942 Control Board Motherboard for GE Refrigerator Instruction Manual

## PartsForLess WR55X10942

# PartsForLess WR55X10942 Control Board Motherboard Instruction Manual

Model: WR55X10942

## 1. INTRODUCTION

---

This manual provides detailed instructions for the installation, operation, and troubleshooting of the PartsForLess WR55X10942 Control Board Motherboard. This component is designed as a replacement part for compatible GE refrigerators, restoring essential functions such as cooling, temperature regulation, and display operation. It is compatible with various GE models, including those originally equipped with part numbers such as WR55X10942, PS2364946, WR55X10942P, WR55X11130, WR55X10552, WR55X10656, WR55X10996, WR55X11072, and 200D4852G010.

## 2. SAFETY INFORMATION

---

Before attempting any installation or repair, please observe the following safety precautions:

- **Disconnect Power:** Always unplug the refrigerator from the electrical outlet before beginning any work. Failure to do so can result in serious injury or electrical shock.
- **Professional Installation:** If you are not comfortable performing appliance repairs, it is recommended to seek assistance from a qualified technician.
- **Static Electricity:** Electronic components are sensitive to static discharge. Handle the control board by its edges and avoid touching the components directly. Consider using an anti-static wrist strap.
- **Wear Protective Gear:** Use appropriate personal protective equipment, such as gloves, to prevent injury.

## 3. PACKAGE CONTENTS

---

Verify that your package contains the following items:

- PartsForLess WR55X10942 Control Board Motherboard
- Installation Instructions (this document)
- Ground wire (if included with your specific model variant)

## 4. SETUP AND INSTALLATION

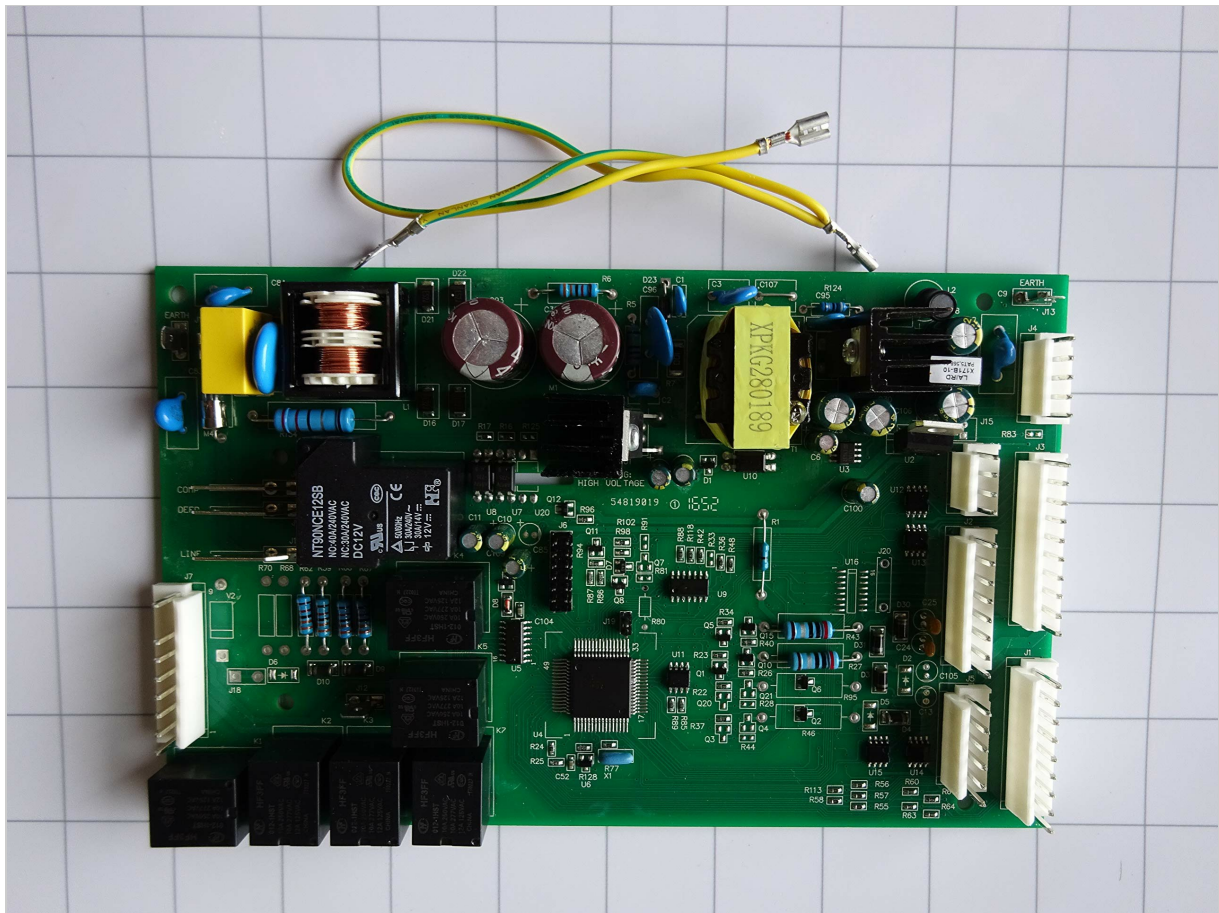
---

### Pre-Installation Checklist

- Ensure the refrigerator is unplugged from the power source.
- Gather necessary tools (e.g., screwdrivers, pliers).
- Locate the existing control board in your refrigerator. Typically, it is found at the back of the unit, behind a service panel.
- Take photos of the existing wiring connections before disconnecting anything. This will serve as a reference during reassembly.

### Installation Steps

1. **Access the Control Board:** Carefully remove the rear access panel of your refrigerator to expose the control board.
2. **Disconnect Wiring:** One by one, disconnect all wiring harnesses and connectors from the old control board. Refer to your previously taken photos to ensure correct re-connection later.
3. **Remove Old Board:** Unscrew or unclip the old control board from its mounting brackets.
4. **Install New Board:** Position the new PartsForLess WR55X10942 control board in the same location and secure it with screws or clips.
5. **Connect Wiring:** Reconnect all wiring harnesses and connectors to the new board. Ensure each connector is firmly seated. Pay close attention to the orientation of each plug.
6. **Ground Wire (if applicable):** If your new board includes an additional ground wire, connect one end to the designated terminal on the board and the other end to a suitable metal ground point on the refrigerator chassis. This is a critical safety step.
7. **Verify Connections:** Double-check all connections to ensure they are secure and correctly placed according to your reference photos.
8. **Replace Panel:** Reattach the rear access panel to the refrigerator.
9. **Restore Power:** Plug the refrigerator back into the electrical outlet.



*Image: The PartsForLess WR55X10942 Control Board Motherboard. This image shows the general appearance of the replacement board with its various components and connectors.*

## 5. OPERATION

---

After successful installation, the PartsForLess WR55X10942 Control Board Motherboard will enable the normal operation of your GE refrigerator. The refrigerator should power on, the compressor should start, and cooling functions should resume. Monitor the refrigerator for several hours to ensure stable operation and proper temperature regulation in both the fresh food and freezer compartments. If your refrigerator has a display, it should now function correctly, showing temperatures and other relevant information.

## 6. MAINTENANCE

---

The control board itself requires no routine maintenance. To ensure the longevity of your refrigerator and its components, consider the following general maintenance practices:

- Keep the area around the refrigerator clean and free of dust, especially the condenser coils.
- Ensure adequate ventilation around the unit.
- Periodically check for any unusual noises or performance issues.

## 7. TROUBLESHOOTING

---

If your refrigerator does not function correctly after installing the new control board, review the following common issues and potential solutions:

### Common Issues and Solutions

- **Refrigerator Not Powering On:**

- Verify the refrigerator is securely plugged into a working electrical outlet.
  - Check the circuit breaker for the refrigerator's outlet.
  - Ensure all wiring harnesses are fully seated on the control board.
- **No Cooling or Intermittent Cooling:**
    - Confirm the compressor is running. If not, re-check all connections to the control board, especially those related to the compressor.
    - Ensure the refrigerator doors are sealing properly.
    - Check if the condenser coils are clean and free of obstructions.
- **Display Panel Issues (e.g., blank, blinking 'HRS'):**
    - This often indicates a communication issue or power supply problem to the display. Re-verify all connections to the control board, particularly those leading to the display panel.
    - Ensure the ground wire (if applicable) is correctly installed and secured.
- **Water Dispenser or Ice Maker Malfunction:**
    - Check the water supply line and filter.
    - Verify connections on the control board related to the water dispenser and ice maker.
- **Unusual Noises:**
    - Ensure no wires or components are touching moving parts like fans.
    - If the noise is from the compressor, and it's not starting, refer to the 'No Cooling' section.

If troubleshooting steps do not resolve the issue, it is recommended to consult a qualified appliance technician.

## 8. SPECIFICATIONS

<b>Brand</b>	PartsForLess
<b>Model Number</b>	WR55X10942
<b>Compatible Devices</b>	GE Refrigerator PS2364946 and other compatible GE models (e.g., WR55X10942P, WR55X11130, WR55X10552, WR55X10656, WR55X10996, WR55X11072, 200D4852G010)
<b>Item Weight</b>	Approximately 0.01 ounces
<b>Package Dimensions</b>	Approximately 9.17 x 8.74 x 2.72 inches
<b>Date First Available</b>	January 29, 2019

## 9. WARRANTY AND SUPPORT

### Warranty Information

The PartsForLess WR55X10942 Control Board Motherboard comes with a **1-year warranty** from the date of purchase. This warranty covers defects in materials and workmanship under normal use. Please retain your proof of purchase for warranty claims.

### Customer Support

For technical assistance, warranty claims, or further inquiries, please contact the PartsForLess customer support team through the retailer's platform where the product was purchased. Provide your model number and a detailed

description of the issue to facilitate efficient support.