



[Manuals.plus](#) /

> [ARRMA](#) /

> ARRMA Sliding Motor Mount Plate ARA320469 Instruction Manual

## ARRMA ARA320469

# ARRMA Sliding Motor Mount Plate (ARA320469) Instruction Manual

## IMPORTANT SAFETY INFORMATION

Before proceeding with installation or use, carefully read this entire instruction manual to understand the product's features and ensure correct handling. Incorrect use can lead to product damage, property damage, or serious injury.

This is a specialized hobby product requiring caution, common sense, and basic mechanical skills. Operating this product unsafely or irresponsibly may result in injury or damage. This product is not suitable for use by children.

Do not use incompatible components or modify this product in any way not explicitly instructed by ARRMA or Horizon Hobby, LLC. This manual provides essential safety, operation, and maintenance instructions. Adhering to all instructions and warnings before assembly, setup, or use is crucial for correct operation and to prevent damage or injury.

## PRODUCT OVERVIEW

### Product Description

The ARRMA Sliding Motor Mount Plate (ARA320469) is a red aluminum component designed to provide a secure and adjustable mounting point for your ARRMA 1/8 scale BLX Motor. Its aluminum construction aids in dissipating heat during demanding RC operation.

### Key Features

- Precision manufactured from lightweight aluminum for reduced vehicle weight and consistent hardware fit.
- Anodized red finish for enhanced durability.
- Precision manufactured screw mounting holes for fast and easy servicing.
- Aluminum material assists in dissipating heat during extreme RC action.

### Package Contents

- 1 x Sliding Motor Mount Plate, Red (ARA320469)

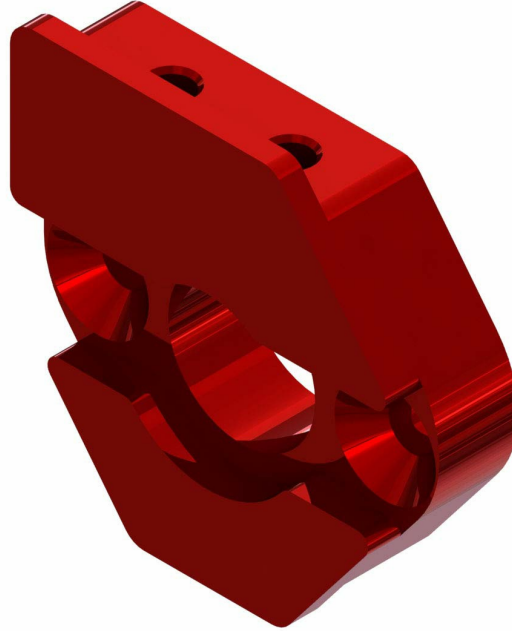


Image: The ARRMA Sliding Motor Mount Plate (ARA320469) in red, shown from an angled perspective.

## INSTALLATION INSTRUCTIONS

This motor mount plate is designed for use with ARRMA 1/8 scale BLX Motors. It requires prior removal of the old motor mount plate and is to be used in conjunction with #ARA320468 (sold separately).

1. **Remove Old Motor Mount Plate:** Carefully remove the existing motor mount plate from your ARRMA 1/8 scale BLX Motor.
2. **Align New Mount Plate:** Align the new red Aluminum Motor Mount Plate (ARA320469) with the designated mounting holes on your motor. Ensure proper orientation for correct gear mesh adjustment.
3. **Secure Mount Plate:** Secure the new mount plate firmly using appropriate screws through the precision-manufactured mounting holes. Ensure all screws are tightened to the manufacturer's recommended torque specifications to prevent loosening during operation.

## OPERATION AND FUNCTION

The ARRMA Sliding Motor Mount Plate facilitates precise adjustment of the motor's position, which is crucial for setting the correct gear mesh between the motor pinion and the vehicle's spur gear. Proper gear mesh is essential for efficient power transfer and to prevent premature wear of gears.

The aluminum construction of the mount also contributes to the thermal management of the motor by acting as a heat sink, helping to dissipate heat generated during high-performance RC driving. This helps maintain optimal motor operating temperatures and prolong its lifespan.

## MAINTENANCE

---

Regular inspection and maintenance of your motor mount plate are recommended to ensure optimal performance and longevity.

- **Visual Inspection:** Periodically check the motor mount for any signs of damage, cracks, or deformation. Ensure all mounting screws are tight.
- **Cleaning:** Keep the motor mount free from dirt, dust, and debris. A soft brush or compressed air can be used for cleaning. Avoid using harsh chemicals that may damage the anodized finish.
- **Gear Mesh Check:** Regularly verify that the gear mesh between the motor pinion and spur gear is correctly set. Adjust as necessary to prevent excessive wear.

## TROUBLESHOOTING

---

If you encounter any issues with the ARRMA Sliding Motor Mount Plate, consider the following:

- **Loose Motor:** If the motor feels loose, check that all mounting screws securing the motor to the plate and the plate to the chassis are properly tightened.
- **Excessive Gear Noise/Wear:** This may indicate incorrect gear mesh. Re-adjust the motor position on the sliding mount to achieve the optimal gear mesh.
- **Overheating Motor:** While the aluminum mount aids in heat dissipation, persistent motor overheating may indicate other issues such as incorrect gearing, motor problems, or excessive load. Ensure proper ventilation and consider checking other components.

For further assistance, please refer to your vehicle's main instruction manual or contact ARRMA customer support.

## SPECIFICATIONS

---

<b>Brand</b>	ARRMA
<b>Model Number</b>	ARA320469
<b>Color</b>	Red
<b>Material Type</b>	Aluminum (as per product description, though specifications list 'Plastic' which appears to be an error in source data for this specific component)
<b>Size</b>	1/8 scale
<b>Item Weight</b>	0.02 Kilograms

<b>Item Dimensions</b>	4 x 2.5 x 0.47 inches
------------------------	-----------------------

*Note: The material type is specified as Aluminum in the product description for heat dissipation benefits, which is consistent with the product's function. The 'Plastic' specification in the general product data may be a generic entry.*

## **WARRANTY AND SUPPORT**

---

For information regarding warranty coverage, please refer to the documentation provided with your complete ARRMA vehicle or visit the official ARRMA website. Warranty terms may vary based on region and product type.

For technical support, spare parts, or any inquiries not covered in this manual, please contact ARRMA customer service through their official website or authorized distributors. Ensure you have your product model number (ARA320469) available when seeking support.